

This report is available at www.wrd.org

Printed copies are available.

Send requests to:

watermaster@wrđ.org

WATERMASTER SERVICE

IN THE WEST COAST BASIN
LOS ANGELES COUNTY

July 1, 2024 - June 30, 2025

November 2025

**WEST COAST BASIN
WATER RIGHTS PANEL**



Prepared by the
Water Replenishment District of Southern California (WRD)
West Coast Basin Administrative Body
for the
West Coast Basin Watermaster Water Rights Panel

Adopted on
November 4, 2025

Contents

Summary of Pertinent Data	1
Introduction	2
Executive Summary	2
Background	2
Water Use	4
A. Adjudicated Extractions by Parties	4
B. Groundwater Storage Activities by Parties	4
C. Total Extraction Rights and Over-extractions	5
D. Extractions of Contaminated Groundwater	5
E. Extractions by Non-Parties	5
F. Extraction Exemptions	5
G. Adjudicated Rights Transfers	6
H. Exchange Pool	7
I. Extraction Wells	7
J. Meter Testing Program	7
Water Supply	9
A. Precipitation	9
B. Groundwater Recharge	9
C. In-Lieu Replenishment	10
D. Imported Water	10
E. Recycled Water	10
F. Total Water Use	10
G. Exported Water	10
H. Increased Extraction in the Central Basin for Certain Purveyors Serving Overlying Communities	10
I. Seawater Intrusion Barrier Projects	11
J. Groundwater Levels	11
Watermaster Costs and Budget	12

Tables

Table 1 - Water Rights Accounting (acre-feet)	14
Table 2 - Storage Accounting	17
Table 3 - Water Put into Storage	18
Table 4 - Water Extracted from Storage	18
Table 5 - Storage Transfers	18
Table 6 - Historical Storage Summary	19
Table 7 - Over-extractions	19
Table 8 - Non-Consumptive Water Use Permits	20
Table 9 - Extractions by Non-Parties	20
Table 10 - Leases (acre-feet)	21
Table 11 - Permanent Transfers (acre-feet)	22
Table 12 - Exchange Pool	23
Table 13 - Extraction Wells Completed	23
Table 14 - Extraction Wells Destroyed	23
Table 15 - Replenishment Operations	24
Table 16 - WRD In-Lieu Recharge	24
Table 17 - Imported Water Use	25
Table 18 - Recycled Water Use	26
Table 19 - Seawater Intrusion Barrier Project Operations	26
Table 20 - Apportionment of Budget Among Rights Holders	27

Figures

Figure 1 - West Coast Basin (groundwater production)	29
Figure 2 - Monthly Water Production (excludes non-consumptive use)	30
Figure 3 - West Coast Basin (showing key wells and facilities)	31
Figure 4 - Monthly Mean Precipitation	32
Figure 5 - Total Water Use	33
Figure 6 - Water Level Hydrographs	34

Appendices

Appendix A - Groundwater Extractions July 2024-June 2025	35
Appendix B - Succession of Adjudicated Rights as of June 2025	43
Appendix C - Parties to the Amended Judgment as of June 2025	51
Appendix D - Erratum of West Coast Basin Watermaster Annual Report for 2023-2024	53

Governance

2024-2025 AY

West Coast Basin Administrative Body

Water Replenishment District

President

Joy Langford
Division 1

Vice-President

Vera Robles Dewitt
Division 5

Secretary

Sergio Calderon
Division 4

Treasurer

Rob Katherman
Division 2

Director

John D.S. Allen
Division 3

General Manager

Stephan Tucker

Storage Panel

Water Replenishment District
Board of Directors

West Coast Basin Water Rights Panel

West Coast Basin Water Rights Panel

Chair

Chuck Schaich
City of Torrance

Vice-Chair

Katherine Nutting
Golden State Water Company

Treasurer

Jeffrey Page
City of Manhattan Beach

Charles Campbell
Torrance Refining Company LLC

Ralph Felix
California Water Service Company

Administrative Body Staff

Esther Valle Rojas

Jackie Ramirez

Asha Kreiling

Greg Osti

Tiffani Fong

Summary of Pertinent Data

Item	Administrative Year 2023 - 2024	Administrative Year 2024 - 2025
Parties	72	72
Rights Holders	56	55
Active pumpers	21	20
Active Non-Parties	0	0
Adjudicated Rights (acre-feet)	64,468.25	64,468.25
Water put into Storage (acre-feet)	0	0
Mean Precipitation (inches)	24.26	5.60
Injection at barrier projects (acre-feet)	21,029	23,853
Exported water use by Parties (acre-feet)	0	0
Watermaster Budget, total ¹	\$139,203	\$143,250
Adjudicated Rights Extractions (acre-feet) ²	36,897	42,415
Recycled water use by Parties (acre-feet)	21,512	22,228
Imported water use by Parties (acre-feet)	118,773	117,801
Total water use by Parties (acre-feet)	177,182	182,444

¹ For the 2024- 2025 AY, Water Rights Panel Assessment: \$0.00; Administrative Body Budget: \$142,350

² Excludes extractions by Parties with non-consumptive water use permits and by non-parties.

Introduction

Executive Summary

This Watermaster Annual Report, developed by the Administrative Body and adopted by the Water Rights Panel, summarizes information on groundwater extractions, storage accounts, use of imported water and recycled water, replenishment operations and the budget and finances of the West Coast Basin (Basin) Watermaster during the 2024-2025 administrative year (AY). This report complies with the provisions set forth in the West Basin Amended Judgment.

During the 2024-2025 AY, the Basin experienced a 15% increase in groundwater production from the previous AY. The production total does not include any water extracted under an exemption as described in Section F. The report is organized into three sections, including Water Use, Water Supply, and Watermaster Costs and Budget. In addition, the report provides various tables and figures describing the narrated information.

Background

The West Coast Basin underlies 160 square miles in the southwestern part of the coastal plain of Los Angeles County. Figure 1 shows the location and adjudicated boundaries of the Basin. The Basin is bounded on the west by the Santa Monica Bay, on the north by the Ballona Escarpment, on the east by the Newport-Inglewood Uplift, and on the south by the San Pedro Bay and the Palos Verdes Hills. Twenty incorporated cities and several unincorporated areas overlie the Basin.

An essential portion of the water needed by the residents and industries in the area overlying the Basin is pumped directly from groundwater stored in the Basins aquifers. In 1945, the intrusion of seawater caused by declining groundwater levels due to over pumping threatened the quality and quantity of the groundwater supply. In response to the seawater intrusion problem, legal action was initiated to halt the pumping overdraft and prevent further damage to the Basin. In 1955, the Superior Court of Los Angeles County (Court) appointed the Department of Water Resources (DWR) as the Watermaster to administer an Interim Agreement. Subsequently, in 1961, the Court retained the DWR as the Watermaster of the final West Coast Basin Adjudication (Judgment).

The Judgment has been amended multiple times since its inception. When the Judgment was amended on December 5, 2014 (Amended Judgment), the Court, for the first time, granted Parties direct input into administration and enforcement of the Judgment. Furthermore, the Amended Judgment confirmed the retirement of DWR as the Watermaster and established a new Watermaster structure.

The Watermaster structure includes three separate constituent bodies serving different functions: 1) an Administrative Body, 2) a Water Rights Panel, and 3) a Storage Panel. The Administrative Body was appointed by the Court to perform the Watermaster accounting and reporting functions. The WRD was appointed to fulfill this role. The Water Rights Panel enforces issues related to the

pumping rights within the adjudications and is composed of five Basin adjudicated rights holders. The Storage Panel is comprised of the Water Rights Panel and the WRD Board of Directors, which together approve certain groundwater storage efforts.

The Watermaster assists the Court in the administration and enforcement of the provisions of the Judgment. Among other duties, the Watermaster monitors groundwater levels, extractions, storage, and reports significant water-related events.

Water Use

A. Adjudicated Extractions by Parties

The Judgment limits the amount of groundwater each Party with water rights may extract annually from the Basin. This limit is referred to as an “adjudicated right” or “AR”. The AR for each Party is listed in Table 1. Parties are required to report water extractions to the Administrative Body each month (or quarterly for small producers). Appendix A lists, by Party, the volume of groundwater extracted each month from each active well in the Basin. Figure 1 illustrates the variation of groundwater production by three distinct production classifications: less than 500 acre-feet per year (afy), 500 to 2,000 afy, and more than 2,000 afy, during the 2024-2025 AY. In addition, Figure 2 shows monthly water production (excluding non-consumptive use) for the 2024-2025 AY totaling 42,414.58 acre-feet (af), a 15% increase from the previous AY.

To provide flexibility regarding water rights, the Judgment contains provisions, such as “carryover,” which allows each Party to carry over into the succeeding administrative year 100% of their unused AR plus or minus (+/-) leases with flex (if any). Furthermore, the amount of available carryover is reduced by the amount of stored water held by the Party. Yet, per the Amended Judgment, such reduction will not cause the amount of carryover to be less than 20% of a Party’s total AR (including leases with flex). This type of provision is in place to meet unforeseen water demands.

B. Groundwater Storage Activities by Parties

The Judgment permits Parties with water rights to store water in the Basin for future use. Pursuant to Section V.3.(B) of the Judgment, Parties can convert their carryover to storage upon payment of the Replenishment Assessment to WRD.

Table 2 describes storage accounting, specifically the total carryover from the 2023-2024 AY, storage activity for the 2024-2025 AY (transfers, water put into storage, water extracted from storage, and balances), and total carryover balance into the ensuing AY. Table 3 lists the total quantity of water put into storage. There was no water put into storage and no storage extractions during the 2024-2025 AY (Table 4).

The Judgment allows the transfer of stored water between Parties. However, there were no storage transfers in the 2024-2025 AY (Table 5).

Table 6 shows a historical storage summary from 2014-2015 to 2024-2025 AY, including water put into storage, storage extractions, storage balance, and the available adjudicated storage capacity.

C. Total Extraction Rights and Over-extractions

Parties with water rights have a total extraction right, which is the maximum amount of groundwater that can be extracted in a single AY. In the West Coast Basin, Parties with one-year carryover and/or storage rights are allowed to extract up to 120% of the sum of their AR plus or minus (+/-) leased water. For example, if a Party has an AR of 1,000 af, 400 stored water rights, and leases an additional 200 af, their maximum yearly total extraction would be calculated as follows: $(1,000 + 200) \times 1.2 = 1,440$ af. Parties without one-year carryover or storage rights can over-extract 10% of their AR plus or minus (+/-) leased water or 2 af, whichever is greater. Under certain circumstances, a Party may be allowed extraction in a greater amount; however, prior approval must be obtained from the West Coast Basin Storage Panel. Any Party that exceeds their total extraction right without prior approval from the Storage Panel is in violation of the Judgment.

Any over-extraction, which is the difference between total rights and total extraction, is deducted from that Party's subsequent administrative year's AR. Watermaster will notify a Party when they are in violation of the Judgment and/or over-extracts.

During the 2024-2025 AY, there were no over-extractions (Table 7).

D. Extractions of Contaminated Groundwater

A Party may petition the Administrative Body (WRD) for a Non-Consumptive Water Use Permit (NCWUP) as part of a project to remediate or ameliorate groundwater contamination. If the petition is granted, the Party may extract the groundwater without counting against its production rights, so long as the conditions of the Judgment are met. A sponsor/Party does not need to own water rights for groundwater extractions if granted a NCWUP. A non-Party may extract contaminated groundwater for cleanup purposes by partnering with a Party who obtains the NCWUP and then assigns it to the non-Party. Table 8 lists current NCWUPs issued by WRD and the amount of groundwater extracted under those permits.

In the 2024-2025 AY, there were seven NCWUP with a total of 195.29 af of non-consumptive water use extractions. Appendix A reports the monthly extractions by well. Negative values listed in Appendix A represent a net re-injection of water produced.

E. Extractions by Non-Parties

In the 2024-2025 AY there were no extractions by Non-Parties reported, not including NCWUPs (Table 9).

F. Extraction Exemptions

The Court approved an amendment to the Judgment during the 2018-2019 AY, which adds Section V.15, which allows for the extraction of non-potable groundwater by agencies with no AR. Specifically, extractions of groundwater are only permitted if all the following criteria are satisfied:

1. Only groundwater containing at least 500 milligrams/liter (mg/l) of chloride, as measured at the influent to any facility used to treat such water, may be extracted.

2. Extractions must be made by a public agency with statutory authority to clean contaminated groundwater.
3. Extractions of such groundwater must provide a “Regional Benefit” (as defined in Section II.27 of the Judgment) to the Basin as a whole and not just to the extracting Party.
4. All extractions pursuant to the new Paragraph V.15 are subject to the payment of WRD’s Replenishment Assessment.

In addition, all new projects seeking an extraction exemption must be reviewed (as set forth in Section V.13 of the Judgment) and approved by the Water Rights Panel and WRD in its capacity as the Administrative Body. The Water Rights Panel and WRD must ensure that the project is technically feasible and will not cause material physical harm (as defined in Section II.21 of the Judgment) to the Basin. In addition, all approved extraction exemption projects must provide annual reporting in response to the required criteria.

During the 2024-2025 AY, WRD had a total production of 1,582.46 af under the approved exemption received in 2018 for the Goldsworthy Desalter (Appendix A). In accordance with the terms of the exemption permit, the average chloride level at the influent remained above 500 mg/l. There were no additional extraction exemption requests submitted during the AY.

G. Adjudicated Rights Transfers

Each year, ARs are transferred between Parties through leases (temporary transfers) and change of ownership (permanent transfers) transactions. Table 10 shows transfers of AR through leases, specifically the Parties involved, transaction type (leases with and without flex), amount, and recordation date. During the 2024-2025 AY, there were seven leases that transferred a total of 4,753.60 af (all leases with flex). Leases with flex transfer both the pumping right and associated carryover rights to the lessee for the term stated within the lease agreement.

In transferring water rights, Parties must specify (1) the type of right (i.e., adjudicated rights, one-year carryover, or drought carryover), (2) the amount of right to the nearest 0.01 af, and (3) the period of the lease, if applicable. Moreover, all leases must be made on an AY basis and must be executed by the Parties and received by the Administrative Body no later than one month and 15 days following the end of the AY in which the lease is effective.

Permanent transfers of water rights must be documented accordingly. Specifically, when land is sold, in which a water right has been developed, the Administrative Body must receive a copy of the transfer document if the water right is also transferred. Water rights do not automatically pass to the new landowner unless the transfer document specifies the transfer of water rights and the exact amount of the water right that was transferred with the land. Watermaster maintains a template for a Deed of Water Rights - Permanent Transfer template on its website to ensure the information provided on the transfer document is sufficient. In AY 2024-2025 there was one permanent transfer (sale) from Hollywood Park Land Company LLC to City of Inglewood of 282.00 af of AR (Table 11).

For 2024-2025 AY, there were 72 Parties to the Judgment (individuals or entities that have a privilege or obligation to the Judgment), which is unchanged from the prior year. There were 55

water rights holders, which is one less than the prior year; water rights were transferred from one existing party to another. Appendix B shows the succession of ARs in the Basin. In addition, Appendix C lists current Parties to the Judgment, Water Rights Holders, and Non-Parties with water rights.

H. Exchange Pool

The Judgment authorizes an Exchange Pool to provide additional water rights to Parties without sufficient water. If a Party's estimated water requirement for the following fiscal year exceeds its total available water supply, that Party may purchase additional water from the Exchange Pool. There were no requests for Exchange Pool water during the 2024-2025 AY (Table 12).

I. Extraction Wells

Seventy-eight (78) wells had reported extractions in 2024-2025 AY, which is four more than the previous AY. The locations of the extraction wells are shown on Figure 1 by three distinct production classifications. Furthermore, according to information provided to Watermaster, there were three extraction wells completed (Table 13) and no extraction wells destroyed in 2024-2025 AY (Table 14).

J. Meter Testing Program

Accurate measurement of groundwater extractions is essential for the successful management of groundwater. Therefore, Watermaster requires an operative water meter to be installed at each extraction well. It is the responsibility of each Party to ensure that its meter and testing facilities are installed properly and are maintained in good working condition. It is the goal of Watermaster to test the water meter at each active extraction well at least once every two years or when a Party requests a meter calibration. Watermaster tests meters by volumetric or pitot tube comparisons or other methods, as appropriate. Watermaster notifies a Party that they must repair or replace their meter when the meter registers beyond five percent accuracy. If the registration accuracy of the meter deviates by more than five percent, Watermaster may revise the well production amount.

The meter testing program is managed by the Water Rights Panel who has contracted with Golden Meters Service Inc to complete testing. During 2024-2025 AY, Golden Meters Service Inc. performed seventeen-meter tests and all meters passed.

This page intentionally left blank

Water Supply

A. Precipitation

Precipitation over the Basin has relatively minimal direct influence on the replenishment of the groundwater in the Basin. This is a result of the low soil permeability that characterizes much of the Basin and large impermeable surfaces (i.e. pavement and buildings). However, during the years of high rainfall, increased runoff from the areas upstream can result in increased replenishment to the Basin and a decreased groundwater demand by water users, which can result in lower rates of groundwater extraction from the Basin.

During the 2024-2025 AY, the following amounts of rainfall were measured at three precipitation stations:

- 5.11 inches at Los Angeles International Airport
- 5.03 inches at Long Beach Airport
- 6.65 inches at Torrance Airport

Figure 3 shows the location of the precipitation stations and other key facilities, and Figure 4 shows the monthly precipitation average measured at the three stations. Based on the total rainfall measured, the mean precipitation in the West Coast Basin was 5.60 inches (Figure 4), which is 46% of the long-term mean of 12.07 inches. The mean precipitation for 2024-2025 AY decreased by 18.66 inches compared to the previous AY.

B. Groundwater Recharge

Replenishment of the Basin occurs primarily by injection of imported and recycled water into the West Coast and Dominguez Gap Seawater intrusion barriers located along the coast, and underflow from the Central Basin to the east and Santa Monica Basin to the north. As mentioned above, minimal rainfall over the Basin infiltrates into deeper aquifers of the Basin.

Water spread in the Central Basin percolates into the aquifers and, eventually, some groundwater crosses the Newport-Inglewood Uplift to replenish the groundwater in the West Coast Basin. Although the recharge water is not directly applied to the West Coast Basin, this recharge process returns large quantities of water to the Basin by substantially increasing the natural subsurface flow from the Central Basin to the West Coast Basin. Table 15 shows the source and quantity of water replenished in the Montebello Forebay area of the Central Basin for the 2023-2024 AY and the 2024-2025 AY. Notably, for the sixth consecutive year, WRD purchased zero (0) af of imported water for spreading in the Montebello Forebay.

Water injected in the seawater intrusion barrier projects also contributes significantly to the replenishment of the Basin (see Section I, Seawater Intrusion Barrier Projects).

C. In-Lieu Replenishment

During the 1965-1966 water year, WRD, in cooperation with the MWD, began an in-lieu replenishment program, where discounted imported water was offered seasonally due to availability. WRD contracted with Parties having access to supplemental imported water that could be used in lieu of extracting groundwater from the Basin to reduce overall pumping impacts. However, due to water shortages and other reasons, MWD discontinued their discounted seasonal imported water in 2011 and as a result, WRD generally suspended its in-lieu replenishment program except under special circumstances. There was no in-lieu recharge in 2024-2025 AY (Table 16).

D. Imported Water

Imported water has been the largest component of supply for the Basin since the mid-1950s. Water is imported from Northern California via the State Water Project and the Colorado River and is made available to water users by MWD through its member agencies: City of Long Beach, West Coast Basin Municipal Water District, City of Torrance, and the City of Los Angeles. Table 17 lists imported water for direct use by source, Party, and quantity. During the 2024-2025 AY, a total of 117,801 af of water was imported, which is a 972 af decrease or 0.8% decrease from the previous AY.

E. Recycled Water

Table 18 shows that 22,228 af of recycled water was used in the area overlying the Basin during the 2024-2025 AY, not including WRD replenishment water. This amount is 716 af or 3% more than the previous AY.

F. Total Water Use

Figure 5 shows the total water use in the Basin during the 2024-2025 AY, including extracted groundwater, imported water and recycled water for direct use.

G. Exported Water

No groundwater was exported from the Basin. California Water Service Company exported purchased imported water from the Basin to portions of its service area in the Palos Verdes Hills.

H. Increased Extraction in the Central Basin for Certain Purveyors Serving Overlying Communities

Per Section IV.K of the Central Basin Third Amended Judgment, "certain purveyors" are Parties to both the Central Basin Third Amended Judgment and West Coast Basin Judgment and serve communities overlying both the Central and West Coast Basins. These purveyors include the City of Los Angeles, Golden State Water Company, and California Water Service Company and are allowed to increase their extraction in the Central Basin beyond their Allowed Pumping Allocation, which is the amount of groundwater each Party may extract annually. However, the increased

extraction is counted against their AR in the West Coast Basin. Increased extractions are limited to 5,000 af per AY. There were no increased extractions during the 2024-2025 AY.

I. Seawater Intrusion Barrier Projects

The Los Angeles County Department of Public Works operates two barrier projects, the West Coast Basin Barrier, and the Dominguez Gap Barrier, within the Basin. The barriers are designed to prevent seawater intrusion into the freshwater aquifers of the Basin. Table 19 shows the quantities of imported and recycled water injected into the two barrier projects. In the 2024-2025 AY, 23,853 af of water were injected into these two barrier systems, which is a 13% increase from the previous AY. The location of the two barriers systems is illustrated in Figure 3.

J. Groundwater Levels

Figure 3 shows the location and water level elevations of the key wells located in the Basin. Figure 6 shows the water level elevations at the key wells. More detailed information regarding groundwater levels in the Basin is provided in WRD's Annual Engineering Survey and Report and Regional Groundwater Monitoring Report. These reports are available on WRD's website.

Watermaster Costs and Budget

To fund Watermaster activities, both the Administrative Body and the Water Rights Panel can levy an annual assessment on water rights holders under the terms of the Judgment.

The Administrative Body charges a flat fee of twenty dollars (\$20) to each rights holder. In addition, the remaining amount of the Administrative Body budget is proportionally charged to all rights holders based upon their AR. For the 2024-2025 AY, the Watermaster budget for the Administrative Body was \$142,350, which is an increase of 2.9% from the previous AY. This budget was reviewed and approved by the Water Rights Panel, as any increase to the Administrative Body budget requires the Panel's approval.

The Water Rights Panel assessment is charged to all water rights holders. The Panel waived their assessment this AY. Table 20 lists the budget summary for the 2024-2025 AY.

This page intentionally left blank

Table 1 – Water Rights Accounting (acre-feet)

Party/Water Rights Holder	AR 2024- 2025 ¹	Net Carryover ² from 2023- 2024	Leases ³		Storage ⁴	Total Rights ⁵	Total Production ⁶	Balance ⁷	Allowable Carryover into 2025-2026		
			with Flex	w/o Flex					Drought ⁸	Normal	Total
ABC Nursery	24.10	24.10	0.00	0.00	0.00	48.20	16.00	32.20	0.00	24.10	24.10
Asahi Fancy Koi	2.00	34.20	0.00	0.00	0.00	36.20	0.00	36.20	32.20	2.00	34.20
Automation Industries	0.70	4.10	0.00	0.00	0.00	4.80	0.00	4.80	3.40	0.70	4.10
Boeing Company	1.70	1.70	0.00	0.00	0.00	3.40	0.00	3.40	0.00	1.70	1.70
Cal. Water Service Co.	4,070.00	4,070.00	-40.00	0.00	0.00	8,100.00	1,267.04	6,832.96	0.00	4,030.00	4,030.00
Cal. Water Service Co. Dominguez	10,417.45	10,417.45	0.00	0.00	0.00	20,834.90	6,164.18	14,670.72	0.00	10,417.45	10,417.45
Cal. Water Service Co./Hawthorne Lease	0.00	1,882.00	1,882.00	0.00	0.00	3,764.00	790.30	2,973.70	0.00	1,882.00	1,882.00
Carson-Harbor Village Mobile Home Park	7.00	7.00	0.00	0.00	0.00	14.00	0.00	14.00	0.00	7.00	7.00
Carson-Madrona Co.	104.00	104.00	0.00	0.00	0.00	208.00	0.00	208.00	0.00	104.00	104.00
CBS, Inc.	9.50	9.50	0.00	0.00	0.00	19.00	0.00	19.00	0.00	9.50	9.50
Century Builders	4.70	4.70	0.00	0.00	0.00	9.40	0.00	9.40	0.00	4.70	4.70
Chandler Palos Verdes Sand & Gravel Company	4.20	4.20	0.00	0.00	0.00	8.40	0.00	8.40	0.00	4.20	4.20
Chevron USA	4,601.30	4,601.30	0.00	0.00	0.00	9,202.60	0.00	9,202.60	0.00	4,601.30	4,601.30
Coastline Church of Christ	0.70	4.10	0.00	0.00	0.00	4.80	0.00	4.80	3.40	0.70	4.10
Curtis, Owen W	0.36	3.08	0.00	0.00	0.00	3.44	0.00	3.44	2.72	0.36	3.08
Delaney, Golda Estate of	4.10	14.30	0.00	0.00	0.00	18.40	0.00	18.40	10.20	4.10	14.30
Eco Services Operations	521.00	371.79	0.00	0.00	0.00	892.79	105.17	787.62	0.00	521.00	521.00
El Segundo, City	953.00	953.00	0.00	0.00	0.00	1,906.00	0.00	1,906.00	0.00	953.00	953.00
Engelsma, Susan Trust	12.10	0.00	-12.10	0.00	0.00	0.00	0.00	0.00	0.00	0.00	0.00
Evergreen America Corp.	5.40	5.40	0.00	0.00	0.00	10.80	0.00	10.80	0.00	5.40	5.40
Fujimoto, SR. & St & JK	20.00	32.28	0.00	0.00	0.00	52.28	0.00	52.28	12.28	20.00	32.28
Gillingham, Florence R	2.40	2.40	0.00	0.00	0.00	4.80	0.00	4.80	0.00	2.40	2.40
Golden State Water Co.	7,502.24	2,776.55	1,500.00	0.00	3,300.00	15,078.79	10,066.24	5,012.55	3.39	1,709.16	1,712.55
Hawthorne, City	1,882.00	0.00	-1,882.00	0.00	0.00	0.00	0.00	0.00	0.00	0.00	0.00
Hillside Memorial Park	104.10	11.53	100.00	0.00	0.00	215.63	133.27	82.36	0.00	82.36	82.36

Party/Water Rights Holder	AR 2024-2025 ¹	Net Carryover ² from 2023-2024	Leases ³		Storage ⁴	Total Rights ⁵	Total Production ⁶	Balance ⁷	Allowable Carryover into 2025-2026		
			with Flex	w/o Flex					Drought ⁸	Normal	Total
Honeywell International	22.50	22.50	0.00	0.00	0.00	45.00	0.00	45.00	0.00	22.50	22.50
Honold, Kristin Brandsma	11.80	11.80	0.00	0.00	0.00	23.60	0.00	23.60	0.00	11.80	11.80
Inglewood Park Cemetery	0.00	35.00	0.00	0.00	0.00	35.00	0.00	35.00	35.00	0.00	35.00
Inglewood, City	4,731.89	4,731.89	-1,500.00	0.00	0.00	7,963.78	1,039.46	6,924.32	0.00	3,231.89	3,231.89
Kinder Morgan Liquids Terminals	167.00	167.00	0.00	0.00	0.00	334.00	39.52	294.48	0.00	167.00	167.00
L.A. County Department of Parks & Rec	363.70	340.18	0.00	0.00	0.00	703.88	354.39	349.49	0.00	349.49	349.49
L.A. County Sanitation Districts- WWRF	102.00	102.00	0.00	0.00	0.00	204.00	0.00	204.00	0.00	102.00	102.00
Leuzinger, Emma L Estate of	1.40	5.90	0.00	0.00	0.00	7.30	0.00	7.30	4.50	1.40	5.90
Lockheed Martin Corporation	0.10	0.10	0.00	0.00	0.00	0.20	0.00	0.20	0.00	0.10	0.10
Lomita, City	1,352.00	902.00	-300.00	0.00	0.00	1,954.00	6.23	1,947.77	0.00	1,052.00	1,052.00
Long Beach, City	0.70	0.70	0.00	0.00	0.00	1.40	0.00	1.40	0.00	0.70	0.70
Lopes, Frank	3.70	13.10	0.00	0.00	0.00	16.80	0.00	16.80	9.40	3.70	13.10
Los Angeles, City	1,503.00	1,503.00	0.00	0.00	0.00	3,006.00	0.00	3,006.00	0.00	1,503.00	1,503.00
Loyola Marymount University	48.10	48.10	0.00	0.00	0.00	96.20	0.00	96.20	0.00	48.10	48.10
Manhattan Beach, City	1,131.20	226.24	0.00	0.00	2,262.40	3,619.84	131.40	3,488.44	0.00	226.24	226.24
Montrose Chemical Corp.	1.20	1.20	0.00	0.00	0.00	2.40	0.00	2.40	0.00	1.20	1.20
Mori, Roy H and Kenji	3.60	12.80	0.00	0.00	0.00	16.40	0.00	16.40	9.20	3.60	12.80
Myron Z Chlavin & Nettie Desser Trust & JHD Properties	0.00	12.10	12.10	0.00	0.00	24.20	0.00	24.20	0.00	12.10	12.10
Northrop Corp.	38.15	38.15	0.00	0.00	0.00	76.30	0.00	76.30	0.00	38.15	38.15
Nozaki, Sumikichi	7.00	7.00	0.00	0.00	0.00	14.00	0.00	14.00	0.00	7.00	7.00
Pacific Crest Cemetery Co. ⁹	0.00	-3.92	0.00	0.00	0.00	-3.92	0.00	-3.92	0.00	-3.92	-3.92
Palos Verdes Begonia Farm	0.00	7.40	0.00	0.00	0.00	7.40	0.00	7.40	7.40	0.00	7.40
Phillips 66 Co.	6,170.00	6,957.78	0.00	0.00	0.00	13,127.78	5,984.92	7,142.86	787.78	6,170.00	6,957.78
Rehor, Josephine P	2.20	2.20	0.00	0.00	0.00	4.40	0.00	4.40	0.00	2.20	2.20
Rolling Hills Country Club	290.00	239.00	0.00	0.00	0.00	529.00	314.00	215.00	0.00	215.00	215.00
Roman Catholic Archbishop	72.30	222.30	200.00	0.00	0.00	494.60	272.97	221.63	0.00	221.63	221.63

Party/Water Rights Holder	AR 2024-2025 ¹	Net Carryover ² from 2023-2024	Leases ³		Storage ⁴	Total Rights ⁵	Total Production ⁶	Balance ⁷	Allowable Carryover into 2025-2026		
			with Flex	w/o Flex					Drought ⁸	Normal	Total
SCI California Funeral Services Inc	39.40	39.40	40.00	0.00	0.00	118.80	57.76	61.04	0.00	61.04	61.04
Shell Oil Company	1,019.50	0.00	-1,019.50	0.00	0.00	0.00	0.00	0.00	0.00	0.00	0.00
Southern California Edison Co.	57.10	63.32	0.00	0.00	0.00	120.42	18.15	102.27	6.22	57.10	63.32
Tesoro Refining & Marketing Co., LLC	8,741.00	9,760.50	1,019.50	0.00	0.00	19,521.00	9,963.28	9,557.72	0.00	9,557.72	9,557.72
Torrance Refining Company LLC	2,596.40	2,626.83	0.00	0.00	0.00	5,223.23	962.12	4,261.11	30.43	2,596.40	2,626.83
Torrance, City	5,638.86	1,127.77	0.00	0.00	11,277.20	18,043.83	4,728.18	13,315.65	0.00	1,127.77	1,127.77
Vukelich, Mike	10.00	-1.08	0.00	0.00	0.00	8.92	0.00	8.92	0.00	8.92	8.92
Watson Land Co.	80.20	80.20	0.00	0.00	0.00	160.40	0.00	160.40	0.00	80.20	80.20
Wiseburn School Dist.	8.20	8.20	0.00	0.00	0.00	16.40	0.00	16.40	0.00	8.20	8.20
Total:	64,468.25	54,649.34	0.00	0.00	16,839.60	135,957.19	42,414.58	93,542.61	957.52	51,271.36	52,228.88

¹ AR - Adjudicated Rights

² Net Carryover is the sum of all carryover (drought and one-year) from the previous year AY 2023-2024 less the amount of carryover conversion for the current AY 2024-2025. See Table 3 for carryover conversion (water put into storage) per party for AY 2024-2025.

³ See Table 10 for information concerning leases. Leases with flex include carryover provisions.

⁴ Storage includes carryover conversions for AY 2024-2025. See Table 2 for a summary of all Storage Accounting per party.

⁵ Total Rights = Adjudicated Rights + Net Carryover + Leases + Storage + Increased Extraction.

⁶ Total Production column does not include storage withdrawals (Table 4), which equaled 0 (zero) for AY 2024-2025.

⁷ Balance = Total Rights - Amount Pumped

⁸ Drought = drought carryover created in 1991.

⁹ Negative One-Year Carryover will be deducted from the subsequent year's AR.

Table 2 – Storage Accounting (acre-feet)

Party	Carryover from 2023- 2024		2024-2025 Storage Activity								
			Transfers		Water Extracted		Water put into Storage		Balance		
	ISA ¹	CSP ²	ISA	CSP	ISA	CSP	ISA	CSP	ISA	CSP	Total
Golden State Water Company	3,000.90	299.10	-	-	-	-	-	-	3,000.90	299.10	3,300.00
Manhattan Beach, City	452.48	1,809.92	-	-	-	-	-	-	452.48	1,809.92	2,262.40
Torrance, City	2,255.54	9,021.66	-	-	-	-	-	-	2,255.54	9,021.66	11,277.20
Total	5,708.92	11,130.68	-	-	-	-	-	-	5,708.92	11,130.68	16,839.60

¹ Individual Storage Account.

² Community Storage Pool.

Table 3 – Water Put into Storage

Party	Quantity (acre-feet)	ISA ¹	CSP ²	Storage Method	Date
There were no storage transactions in the 2024-2025 AY.					

Table 4 – Water Extracted from Storage

Party	Quantity (acre-feet)	Storage Account	Date
No stored water was extracted in the 2024-2025 AY.			

Table 5 – Storage Transfers

Party	Quantity (acre-feet)	Storage Account	Date
No stored water was transferred in the 2024-2025 AY.			

¹ ISA = Individual Storage Account

² CSP = Community Storage Pool

Table 6 – Historical Storage Summary (acre-feet)

Year	Water Put into Storage			Water Extracted from Storage			Storage Balance			Available Adjudicated Storage Capacity		
	ISA ¹	CSP ²	Total	ISA	CSP	Total	ISA	CSP	Total	ISA	CSP	Total
2014-15	1,097.77	0.00	1,097.77	0.00	0.00	0.00	1,097.77	0.00	1,097.77	24,702.23	35,500.00	60,202.23
2015-16	1,157.77	1,917.16	3,074.93	0.00	0.00	0.00	2,255.54	1,917.16	4,172.70	23,544.46	33,582.84	57,127.30
2016-17	3,000.90	1,765.10	4,766.00	0.00	0.00	0.00	5,256.44	3,682.26	8,938.70	20,543.56	31,817.74	52,361.30
2017-18	452.48	2,756.42	3,208.90	0.00	0.00	0.00	5,708.92	6,438.68	12,147.60	20,091.08	29,061.32	49,152.40
2018-19	0.00	1,127.70	1,127.70	0.00	0.00	0.00	5,708.92	7,566.38	13,275.30	20,091.08	27,933.62	48,024.70
2019-20	0.00	1,308.90	1,308.90	0.00	0.00	0.00	5,708.92	8,875.28	14,584.20	20,091.08	26,624.72	46,715.80
2020-21	0.00	1,127.70	1,127.70	0.00	0.00	0.00	5,708.92	10,002.98	15,711.90	20,091.08	25,497.02	45,588.10
2021-22	0.00	1,127.70	1,127.70	0.00	0.00	0.00	5,708.92	11,130.68	16,839.60	20,091.08	24,369.32	44,460.40
2022-23	0.00	0.00	0.00	0.00	0.00	0.00	5,708.92	11,130.68	16,839.60	20,091.08	24,369.32	44,460.40
2023-24	0.00	0.00	0.00	0.00	0.00	0.00	5,708.92	11,130.68	16,839.60	20,091.08	24,369.32	44,460.40
2024-25	0.00	0.00	0.00	0.00	0.00	0.00	5,708.92	11,130.68	16,839.60	20,091.08	24,369.32	44,460.40

Table 7 – Over-extractions

Party	AR	Carryover and/or Stored Water	Max Allowable Extraction ³	Total Rights ⁴	Amount Pumped	Over-extraction ⁵	Judgment Violation
There were no over-extractions in 2024-2025 AY.							

¹ ISA = Individual Storage Account

² CSP = Community Storage Pool

³ Max Allowable Extraction: if a Party has carryover or stored water, they are allowed to extract up to 120% of AR +/- leases and not be in violation of the Judgment; if they do not have carryover and/or stored water, they are allowed to over-extract 10% of AR +/- leases or 2 af AR, whichever is greater.

⁴ Total Rights = AR + carryover + leases

⁵ Over-extraction = Total Rights - Amount Pumped

Table 8 - Non-Consumptive Water Use Permits

Party	WRD Resolution No.	Description	2024-2025 Extraction ¹
Montrose Chemical Corporation	23-1203 (RA exemption)	Allowed to extract 1,300.00 af per year during the period of July 1, 2012 through June 30, 2063.	-5.92
Shell Oil Company	23-1208	Allowed to extract 241.00 af per year during the period of July 1, 2023 through June 30, 2028	108.88
Honeywell International, Inc.	24-1231	Allowed to extract 44.55 af per year during the period of April 14, 2024 through April 15, 2029	11.54
Lockheed Martin Corporation	24-1219	Allowed to extract 108.00 af per year during the period of July 1, 2024 through June 30, 2029	0.00
Boeing/McDonnell Douglas	24-1229	Allowed to extract 165.00 af per year during the period of July 1, 2024 through June 30, 2029	67.95
Shell Oil Company	25-1245	Allowed to extract 13.00 af per year during the period of November 1, 2024 through June 30, 2029	12.84
CEMEX (Assigned a NCWUP by City of Inglewood)	25-1230 (RA exemption)	Allowed to extract 32.25 a per year during the period of January 1, 2025 through January 1, 2030	0.00
Total			195.29

Table 9 - Extractions by Non-Parties

Non-Party	Amount Pumped (acre-feet)
No extractions by Non-Parties in the 2024-2025 AY.	

¹ Negative numbers indicate net re-injection of treated water.

Table 10 – Leases (acre-feet)

Party	Transaction Type ¹	Amount	Recordation Date		Party	Net Amount
California Water Service Company (Hawthorne)	Lease with flex	1,882.00	2/1/13	FROM	Hawthorne City of	1,882.00
California Water Service Company	Lease with flex	-40.00	7/23/25	TO	SCI California Funeral Services	-40.00
Engelsma, Susan Trust	Lease with flex	-12.10	1/24/23	TO	Myron Z Chlavin	-12.10
Golden State Water Company	Lease with flex	1,500.00	7/23/25	FROM	Inglewood, City of	1500.00
Hawthorne City of	Lease with flex	-1,882.00	2/1/13	TO	California Water Service Company (Hawthorne)	-1,882.00
Hillside Memorial Park	Lease with flex	100.00	6/19/2025	FROM	Lomita, City of	100.00
Inglewood, City of	Lease with flex	-1,500.00	7/23/25	TO	Golden State Water Company	-1,500.00
Lomita, City of	Lease with flex	-100.00	6/19/25	TO	Hillside Memorial Park	-100.00
Lomita, City of	Lease with flex	-200.00	6/16/25	TO	Roman Catholic Archbishop of Los Angeles	-300.00
Myron Z Chlavin	Lease with flex	12.10	01/24/23	FROM	Engelsma, Susan Trust	12.10
Roman Catholic Archbishop of Los Angeles	Lease with flex	200.00	6/16/25	FROM	Lomita, City of	200.00
SCI California Funeral Services, Inc	Lease with flex	40.00	7/23/25	FROM	California Water Service Company	40.00
Shell Oil Company	Lease with flex	-1,019.50	09/20/22	TO	Tesoro Refining and Marketing Company	-1,019.50
Tesoro Refining and Marketing Company	Lease with flex	1,019.50	09/20/22	FROM	Shell Oil Company	1,019.50
Total Leased Volume		4,753.60				

¹ Leases with flexibility or “flex” transfers both the pumping right and associated carryover rights to the lessee, meaning a party who leases in rights “with flex” is allowed to carryover into the next AY any unused rights from the lease under the terms of the Judgment.

Table 11 - Permanent Transfers (acre-feet)

Party	Transaction Type	Amount	Recordation Date	Party	Net Amount
Hollywood Park Land Company, LLC	Sale	-282.00	9/17/24	Inglewood, City of	-282.00
Inglewood, City of	Sale	282.00	9/17/24	Hollywood Park Land Company, LLC	282.00
Total AR Transfers:					282.00
Total Carryover Transfers:					0.00
Total Change of Ownership:					282.00

Table 12 - Exchange Pool

Party	AR	Required Offer	Actual Offer	Amount Sold	Payment Due Exchanger
No requests for the Exchange Pool Program in the 2024-2025 AY.					

Table 13 - Extraction Wells Completed

Party/Entity	Recordation No.	State Well No.	Owner Designation
CEMEX	204086	2S/14W-32D20S	GWE-07
CEMEX	204087	2S/14W-32C06S	GWE-08
CEMEX	204088	2S/14W-32C05S	GWE-09

Table 14 - Extraction Wells Destroyed

Party	Recordation No.	State Well No.	Owner Designation
No extraction wells reported destroyed in the 2024-2025 AY.			

Table 15 – Replenishment Operations

Water spread in the Montebello Forebay area of the Central Basin provides subsurface recharge to the West Coast Basin.

Source of Water	Quantity (acre-feet)	
	2023- 2024	2024-2025
Local Runoff	146,060	29,360
Recycled Water:		
Whittier Narrows Water Reclamation Plant	8,278	8,693
San Jose Water Reclamation Plant	33,268	43,871
Pomona Water Reclamation Plant	2,931	2,890
Advanced Treated Water:		
Albert Robles Center Advanced Water Treatment Plant	7,722	10,124
MWD untreated Tier 1 water purchased by WRD	0	0
Make-up water from Upper San Gabriel Basin	0	0
Total	198,259	94,938

Table 16 – WRD In-Lieu Recharge

Party	In-Lieu Amount (acre-feet)
There was no in-lieu recharge in the 2024-2025 AY.	

Table 17 - Imported Water Use

Source of Water	Party/Entity	Quantity (acre-feet)	
		2023- 2024	2024-2025
Colorado River and State Water Project	Long Beach, City of ¹	19,161	16,320
Colorado River and State Water Project	West Basin Municipal Water District:		
	California American Water Company	1,027	1,339
	California Water Service Company ²	8,653	8,624
	California Water Service Company (Dominguez)	17,906	16,362
	California Water Service Company (Hawthorne Lease)	3,048	3,158
	El Segundo, City of	6,316	6,590
	Golden State Water Company	9,724	9,611
	Inglewood, City of	6,122	7,092
	Lomita, City of	1,831	1,916
	Manhattan Beach, City of	4,133	4,361
	West Basin MWD Subtotal	58,760	59,053
Colorado River and State Water Project	Torrance, City of	13,128	13,333
Owens River-Mono Basin, Colorado River, and State Water Project	Los Angeles, City of	25,774	27,302
Central Basin Groundwater	California-American Water Company	1,950	1,793
Total Imported Water		118,773	117,801

¹ The values of imported water for the City of Long Beach are the same in the Central Basin.

² Excludes acre-feet of imported water that was exported to Palos Verdes.

Table 18 – Recycled Water Use

Source of Water	Party/Entity	Quantity (acre-feet) ¹	
		2023-2024	2024-2025
West Basin Municipal Water District:	California Water Service Company	186	194
	California Water Service Company (Hawthorne Lease)	65	90
	California Water Service Company (Dominguez)	5,088	5,634
	El Segundo, City of	9,211	9,032
	Golden State Water Company	281	481
	Inglewood, City of	537	734
	Los Angeles, City of	767	737
	Manhattan Beach, City of	321	344
	Torrance, City of	5,056	4,982
Total Recycled Water		21,512	22,228

Table 19 – Seawater Intrusion Barrier Project Operations

Provisional data provided by the Los Angeles County Department of Public Works.

Source of Water	Quantity (acre-feet)	
	2023-2024	2024-2025
West Coast Basin Barrier		
Imported Water Injection	8,157	7,043
Recycled Water Injection	6,161	8,665
Dominguez Gap Barrier		
Imported Water Injection	2,000	2,584
Recycled Water Injection	4,711	5,561
Total	21,029	23,853

¹ Excludes recycled water used for groundwater recharge.

Table 20 - Apportionment of Budget Among Rights Holders

Party	AR (acre-feet)	Water Rights Panel	Administrative Body	Total Amount Billed
ABC Nursery Inc.	24.10	\$0.00	\$72.80	\$72.80
Honeywell International Inc.	22.50	\$0.00	\$69.29	\$69.29
Asahi Fancy Koi Inc.	2.00	\$0.00	\$24.38	\$24.38
Automation Industries Inc.	0.70	\$0.00	\$21.53	\$21.53
Boeing	1.70	\$0.00	\$23.72	\$23.72
CBS Inc.	9.50	\$0.00	\$40.81	\$40.81
California Water Service Company - Hermosa / Redondo	4,070.00	\$0.00	\$8,936.15	\$8,936.15
California Water Service Company - Dominguez	10,417.45	\$0.00	\$22,841.51	\$22,841.51
Carson Harbor Village Mobile Home Park	7.00	\$0.00	\$35.33	\$35.33
Carson-Madrona Company #3 Del Amo	104.00	\$0.00	\$247.80	\$247.80
Century Builders	4.70	\$0.00	\$30.30	\$30.30
Chandler Palos Verdes Sand & Gravel Company	4.20	\$0.00	\$29.20	\$29.20
Chevron U.S.A. Inc.	4,601.30	\$0.00	\$10,100.07	\$10,100.07
Coastline Church of Christ	0.70	\$0.00	\$21.53	\$21.53
Phillips 66 Company	6,170.00	\$0.00	\$13,536.62	\$13,536.62
Curtis, Owen	0.36	\$0.00	\$20.79	\$20.79
Estate of Golda Delaney	4.10	\$0.00	\$28.98	\$28.98
El Segundo, City of	953.00	\$0.00	\$2,107.74	\$2,107.74
Susan Engelsma Trust	12.10	\$0.00	\$46.51	\$46.51
Evergreen America Corporation	5.40	\$0.00	\$31.83	\$31.83
Fujimoto, S R & S T & J K	20.00	\$0.00	\$63.81	\$63.81
Gillingham, Florence R, et al	2.40	\$0.00	\$25.26	\$25.26
Golden State Water Company	7,502.24	\$0.00	\$16,455.16	\$16,455.16
Hawthorne, City of (California Water Service Co.)	1,882.00	\$0.00	\$4,142.90	\$4,142.90
Hillside Memorial Park	104.10	\$0.00	\$248.05	\$248.05
Hollywood Park Land Company, LLC	282.00	\$0.00	\$637.78	\$637.78
Honold, Kristin Brandsma	11.80	\$0.00	\$45.80	\$45.80
Inglewood, City of	4,449.89	\$0.00	\$9,768.37	\$9,768.37
Kinder Morgan Liquids Terminals, LLC	167.00	\$0.00	\$385.85	\$385.85
Estate of Emma L. Leuzinger	1.40	\$0.00	\$23.06	\$23.06
Lockheed Martin Corporation	0.10	\$0.00	\$20.22	\$20.22
Long Beach, City of	0.70	\$0.00	\$21.53	\$21.53
Frank Lopes	3.70	\$0.00	\$28.09	\$28.09
Los Angeles Department of Water and Power, City of	1,503.00	\$0.00	\$3,312.62	\$3,312.62
Los Angeles County Recreation Facilities	363.70	\$0.00	\$816.76	\$816.76
Los Angeles County Sanitation District No. 2 (WWRF)	102.00	\$0.00	\$243.45	\$243.45
Lomita Water System, City of	1,352.00	\$0.00	\$2,981.83	\$2,981.83
Loyola Marymount University	48.10	\$0.00	\$125.37	\$125.37
Manhattan Beach, City of	1,131.20	\$0.00	\$2,498.12	\$2,498.12
Torrance Refining Company LLC	2,596.40	\$0.00	\$5,707.93	\$5,707.93
Montrose Chemical Corporation of California	1.20	\$0.00	\$22.63	\$22.63
Roy H. and Kenji Mori	3.60	\$0.00	\$27.89	\$27.89
Northrop Corporation	38.15	\$0.00	\$103.58	\$103.58
Nozaki, Sumikichi	7.00	\$0.00	\$35.33	\$35.33
Josephine P. Rehor	2.20	\$0.00	\$24.82	\$24.82
Eco Services Operations LLC	521.00	\$0.00	\$1,161.35	\$1,161.35

Party	AR (acre-feet)	Water Rights Panel	Administrative Body	Total Amount Billed
Rolling Hills Country Club	290.00	\$0.00	\$655.30	\$655.30
Roman Catholic Archbishop of Los Angeles	72.30	\$0.00	\$178.39	\$178.39
SCI California Funeral Services Inc	39.40	\$0.00	\$106.31	\$106.31
Shell Oil Company	1,019.50	\$0.00	\$2,253.42	\$2,253.42
Southern California Edison Company	57.10	\$0.00	\$145.09	\$145.09
Tesoro Refining & Marketing Company LLC	8,741.00	\$0.00	\$19,168.91	\$19,168.91
Torrance, City of	5,638.86	\$0.00	\$12,373.05	\$12,373.05
Vukelich, Mike, Jr.	10.00	\$0.00	\$41.91	\$41.91
Watson Land Company	80.20	\$0.00	\$195.69	\$195.69
Wiseburn School District	8.20	\$0.00	\$37.96	\$37.96
Total	64,468.25	\$0.00	\$142,350	\$142,350

Figure 1 - West Coast Basin
(showing groundwater production)

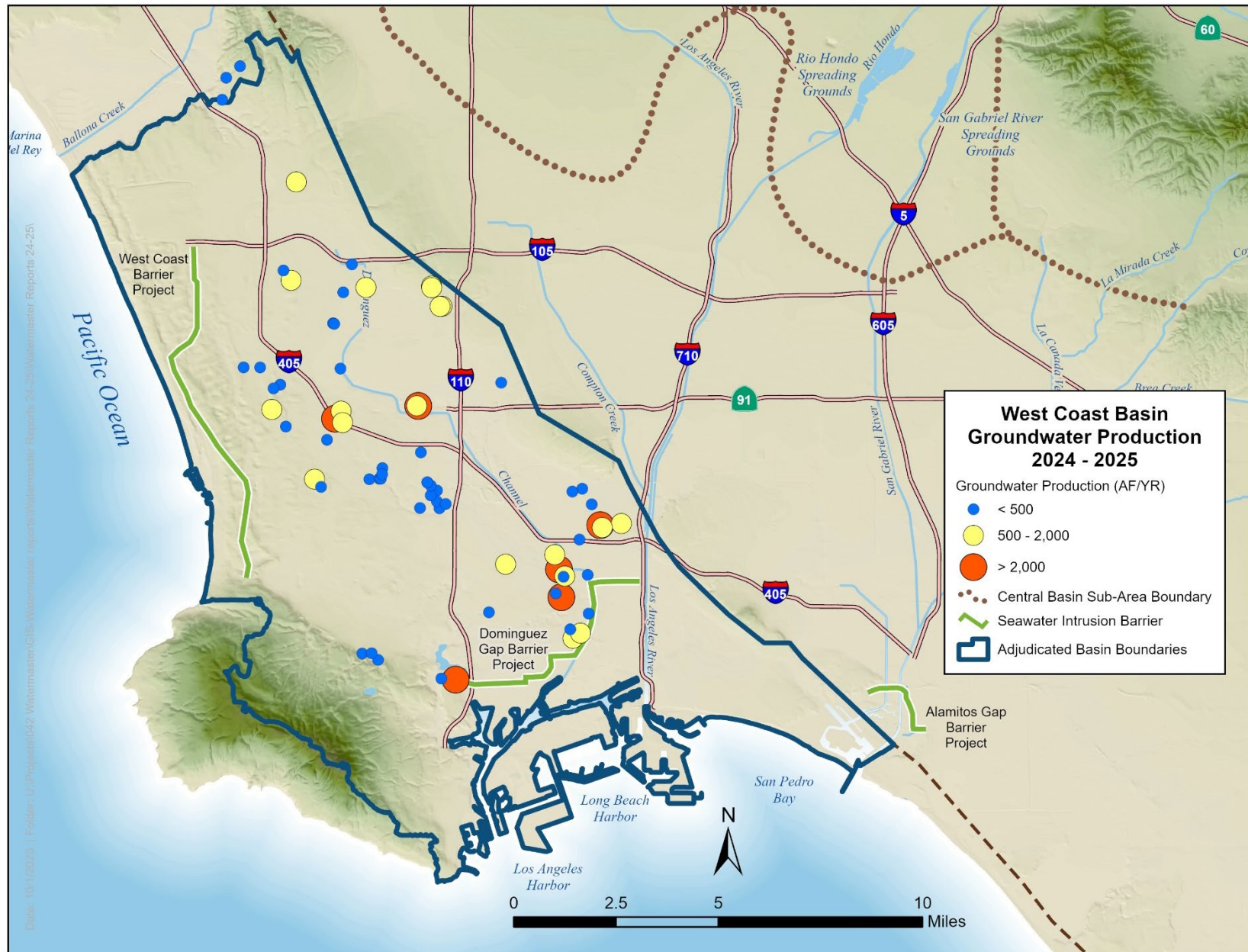


Figure 2 - Monthly Water Production
(excludes non-consumptive use)

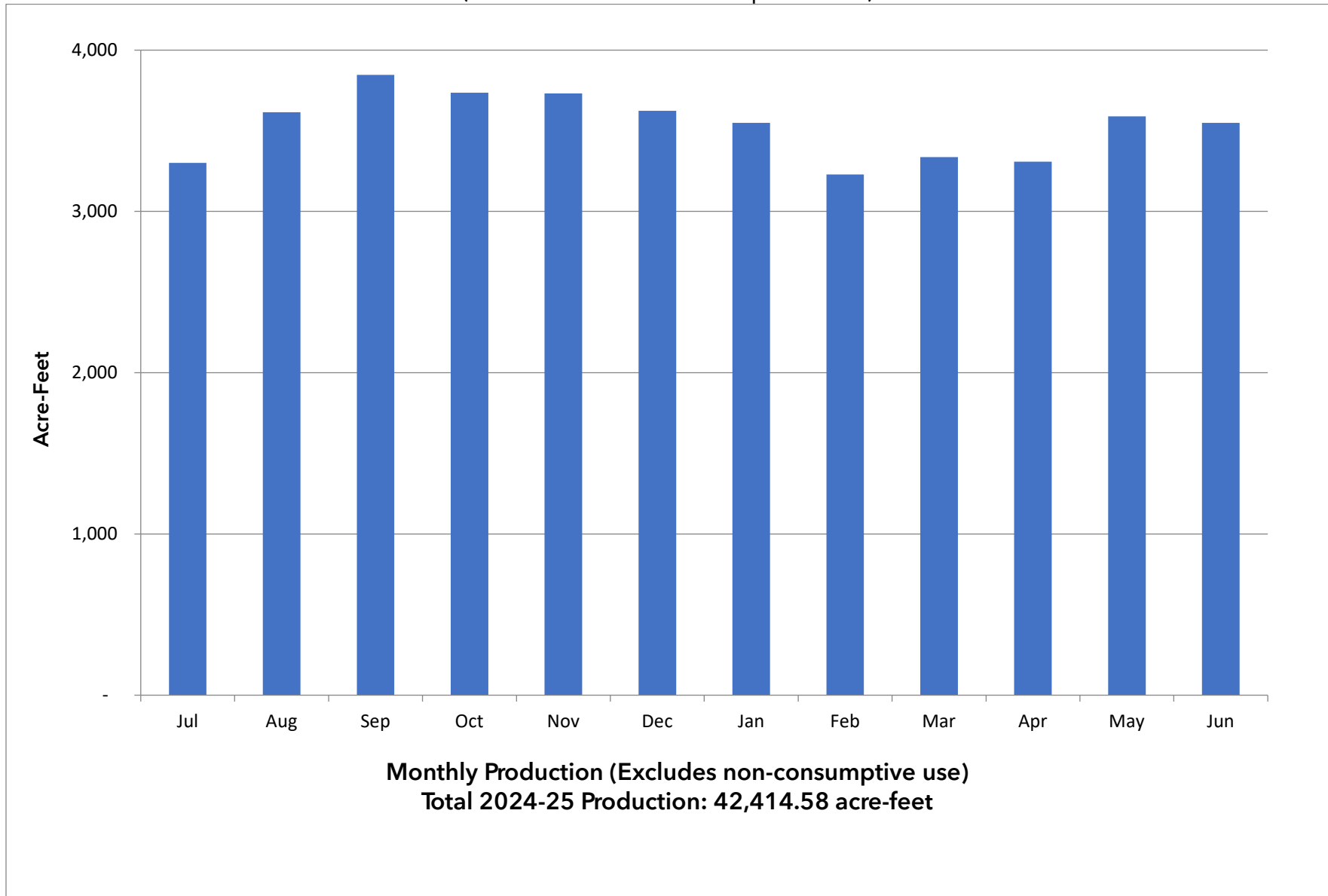


Figure 3 - West Coast Basin
(showing key wells and facilities)



Figure 4 - Monthly Average Precipitation

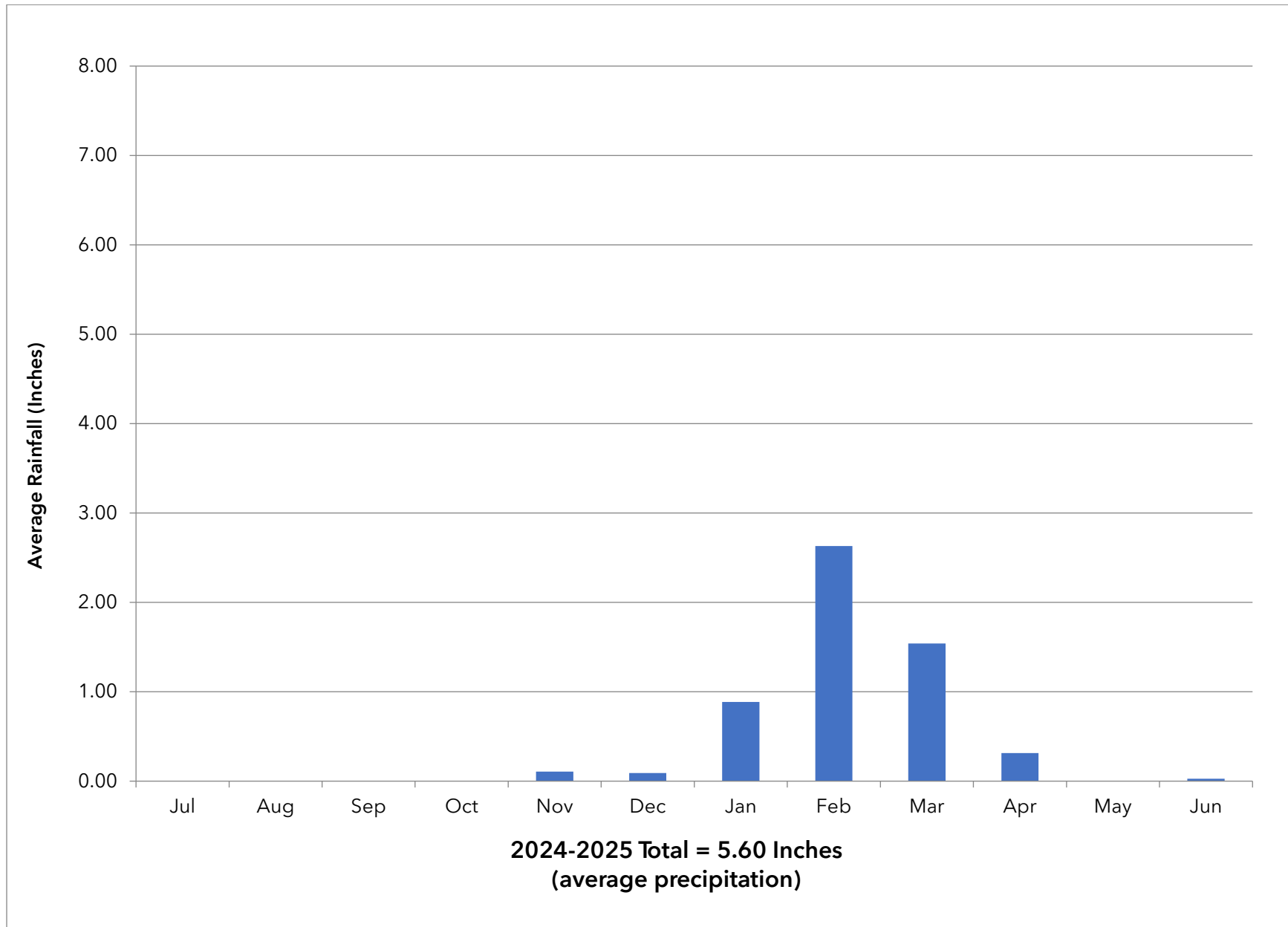


Figure 5 - Total Water Use
(Excludes Groundwater Recharge)

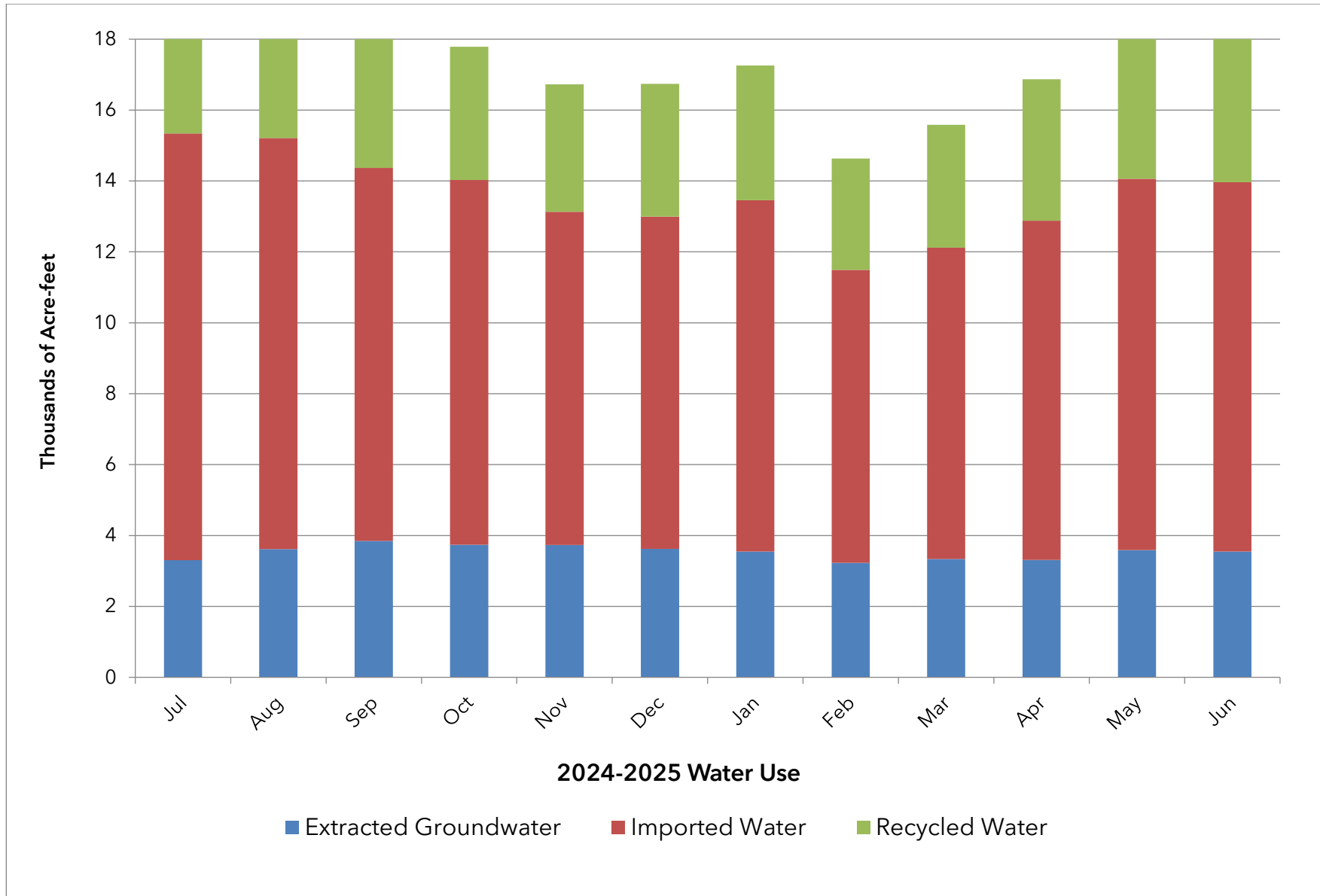
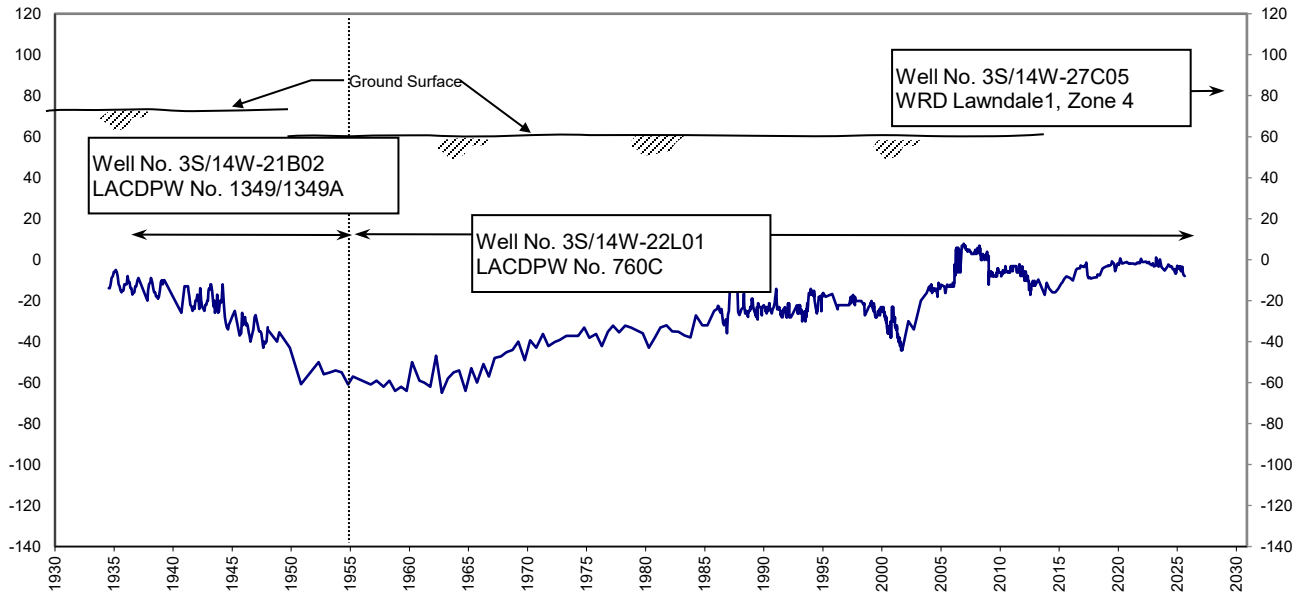
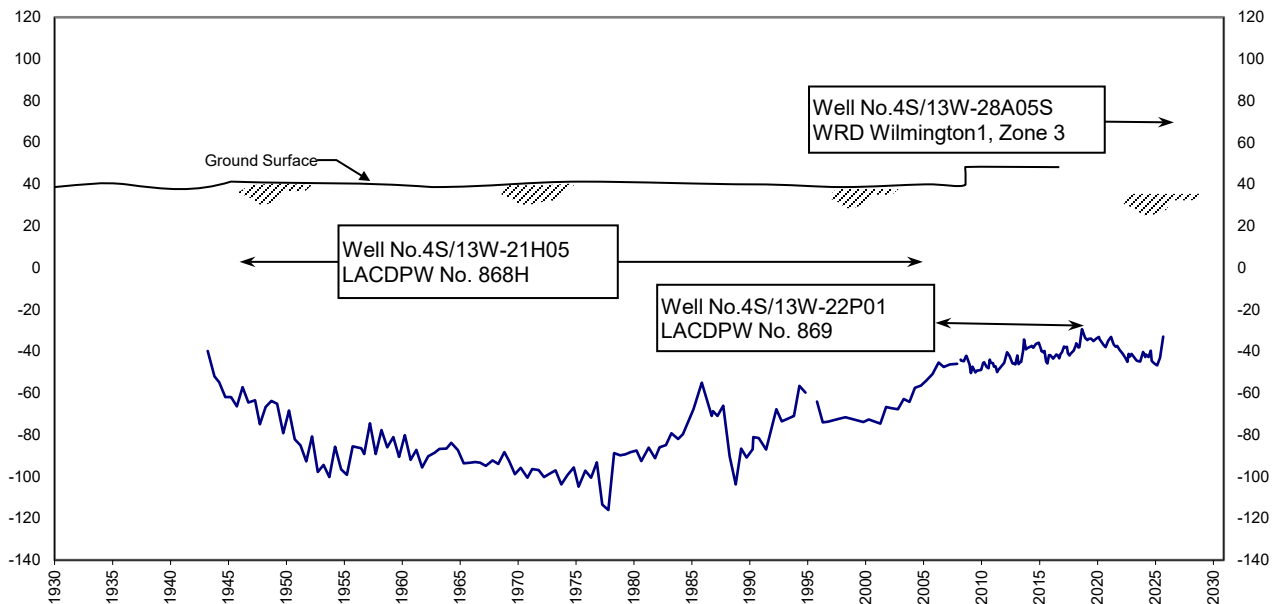


Figure 6 - Water Level Hydrographs

Lawndale1 Key Well



Wilmington1 Key Well



See Figure 3 for well locations.

X-Axis: Year

Y-Axis: Groundwater Elevation (feet mean sea level)

Appendix A

Groundwater Extractions

July 2024 - June 2025

Appendix A - Groundwater Extractions (acre-feet)

7002 - ABC Nursery, Inc.	JUL	AUG	SEPT	OCT	NOV	DEC	JAN	FEB	MAR	APR	MAY	JUN	TOTAL
SWN/Owner No.	1.34	1.34	1.34	1.34	1.33	1.33	1.33	1.33	1.33	1.33	1.33	1.33	16.00
003S013W29F011S/1	1.34	1.34	1.34	1.34	1.33	1.33	1.33	1.33	1.33	1.33	1.33	1.33	16.00

7960 - Boeing (NCWUP)	JUL	AUG	SEPT	OCT	NOV	DEC	JAN	FEB	MAR	APR	MAY	JUN	TOTAL
SWN/Owner No.	0.00	0.00	0.00	0.00	0.00	22.74	0.00	0.00	20.48	0.00	0.00	24.73	67.95
004S012W099B98S	0.00	0.00	0.00	0.00	0.00	22.74	0.00	0.00	20.48	0.00	0.00	24.73	67.95

7052 - California Water Service Co./Hawthorne Lease	JUL	AUG	SEPT	OCT	NOV	DEC	JAN	FEB	MAR	APR	MAY	JUN	TOTAL
SWN/Owner No.	0.40	0.55	24.62	47.21	67.84	99.00	79.68	91.76	76.77	87.82	118.40	96.25	790.30
003S014W09M001S/13	0.40	0.55	24.62	47.21	67.84	0.00	0.86	0.00	0.00	0.00	0.00	0.64	142.12
003S014W09N005S/12	0.00	0.00	0.00	0.00	0.00	99.00	78.82	91.76	76.77	87.82	118.40	95.61	648.18

7050 - California Water Service Company	JUL	AUG	SEPT	OCT	NOV	DEC	JAN	FEB	MAR	APR	MAY	JUN	TOTAL
SWN/Owner No.	80.26	105.23	97.37	73.36	75.52	74.39	95.00	108.89	114.30	108.58	156.68	177.46	1,267.04
003S014W29H001S/30-01	0.57	21.13	20.64	0.49	0.00	0.25	27.38	50.47	53.73	50.26	36.19	45.85	306.96
003S014W29J001S/22-01	1.43	0.87	1.74	1.21	0.78	0.61	0.00	0.00	0.00	57.32	66.77	83.00	213.73
003S014W32A002S/08-02	78.26	83.23	74.99	71.66	74.74	73.53	67.62	58.42	60.57	1.00	53.72	48.61	746.35

7053 - California Water Service Company (Dominguez)	JUL	AUG	SEPT	OCT	NOV	DEC	JAN	FEB	MAR	APR	MAY	JUN	TOTAL
SWN/Owner No.	418.67	501.82	527.86	481.54	516.49	562.00	499.25	451.77	501.61	552.01	604.21	546.95	6,164.18
004S013W11P002S/294-01	41.67	136.40	139.98	141.17	138.90	153.92	119.07	111.06	126.17	121.28	126.52	119.30	1,475.44
004S013W15A011S/215-01	102.57	83.66	103.44	84.27	101.34	110.84	103.75	93.45	102.73	97.68	100.42	97.00	1,181.15
004S013W15A014S/298-01	183.27	181.12	186.84	151.54	182.10	200.08	174.98	157.89	173.90	180.24	185.92	160.47	2,118.35

7053 - California Water Service Company (Dominguez)	JUL	AUG	SEPT	OCT	NOV	DEC	JAN	FEB	MAR	APR	MAY	JUN	TOTAL
SWN/Owner No.	418.67	501.82	527.86	481.54	516.49	562.00	499.25	451.77	501.61	552.01	604.21	546.95	6,164.18
004S013W15F001S/277-01	23.62	30.37	28.00	33.32	26.54	31.14	30.88	27.24	27.77	26.90	22.65	24.56	332.99
004S013W20C001S/279-01	67.54	70.27	69.60	71.24	67.61	66.02	68.42	60.45	66.79	64.31	71.04	65.68	808.97
004S013W29E006S/275-01	0.00	0.00	0.00	0.00	0.00	0.00	2.15	1.68	4.25	61.60	97.66	79.94	247.28

7623 - Eco Services Operations, LLC	JUL	AUG	SEPT	OCT	NOV	DEC	JAN	FEB	MAR	APR	MAY	JUN	TOTAL
SWN/Owner No.	13.78	11.79	11.51	10.16	10.62	9.91	10.60	0.79	0.00	0.12	12.62	13.27	105.17
004S013W10C004S/2	13.78	11.79	11.51	10.16	10.62	9.91	10.60	0.79	0.00	0.12	12.62	13.27	105.17

7226 - Golden State Water Company	JUL	AUG	SEPT	OCT	NOV	DEC	JAN	FEB	MAR	APR	MAY	JUN	TOTAL
SWN/Owner No.	865.52	993.05	1,080.62	1,127.50	1,043.10	871.50	840.81	677.19	749.23	523.12	566.22	728.38	10,066.24
003S014W13B003S/BA004	0.01	0.00	39.46	91.91	89.82	89.74	88.21	79.56	67.68	40.05	22.83	85.75	695.02
003S014W13B004S/BA005	27.82	112.91	107.09	105.77	101.87	105.96	105.77	96.14	82.56	49.26	29.02	100.13	1,024.30
003S014W13J009S/S0005	135.67	133.76	126.80	129.59	113.72	37.09	57.78	54.76	93.58	0.00	0.00	85.56	968.31
003S014W13J010S/S0006	150.50	147.10	137.40	131.44	83.23	52.93	101.94	0.17	42.04	65.92	96.21	117.06	1,125.94
003S014W14D002S/129-02	125.99	123.74	117.72	120.31	114.64	116.07	113.62	110.52	117.66	57.68	37.85	10.24	1,166.04
003S014W15B003S/Goldmedal#1	0.05	0.10	0.11	0.25	0.00	0.06	0.14	0.40	0.35	0.14	0.37	0.00	1.97
003S014W15P001S/Doty1	84.64	80.50	74.08	76.47	71.07	67.33	0.25	0.00	0.00	0.00	0.00	0.00	454.34
003S014W15P002S/Doty2	0.00	39.72	107.61	125.54	126.57	38.92	0.00	0.00	0.37	0.21	0.00	24.21	463.15
003S014W25P004S/DA001	80.18	81.77	88.59	85.91	88.12	91.22	90.90	81.19	88.88	76.26	88.74	32.46	974.22
003S014W25P006S/DA002	260.66	273.45	281.76	260.31	254.06	272.18	282.20	254.45	256.11	233.60	291.20	272.97	3,192.95

Appendix A - Groundwater Extractions (acre-feet)

7270 - Hillside Memorial Park	JUL	AUG	SEPT	OCT	NOV	DEC	JAN	FEB	MAR	APR	MAY	JUN	TOTAL
SWN/Owner No.	17.06	17.45	15.03	9.86	7.81	8.10	7.30	6.24	4.50	12.24	12.44	15.24	133.27
002S014W19K004S/3	17.06	17.45	15.03	9.86	7.81	8.10	7.30	6.24	4.50	12.24	12.44	15.24	133.27

7310 - Inglewood, City of	JUL	AUG	SEPT	OCT	NOV	DEC	JAN	FEB	MAR	APR	MAY	JUN	TOTAL
SWN/Owner No.	132.84	138.87	134.66	126.80	66.45	24.38	11.54	22.11	20.44	45.56	157.90	157.91	1,039.46
002S014W33F001S/Well No.7	114.68	112.89	109.20	103.72	42.62	0.00	0.00	0.00	0.00	25.94	134.11	136.65	779.81
003S014W10G004S/2	18.16	25.98	25.46	23.08	23.83	24.38	11.54	22.11	20.44	19.62	23.79	21.26	259.65

7435 - Los Angeles County Department of Parks & Recreation	JUL	AUG	SEPT	OCT	NOV	DEC	JAN	FEB	MAR	APR	MAY	JUN	TOTAL
SWN/Owner No.	30.74	60.61	35.96	30.30	23.85	13.09	22.44	2.41	13.86	35.00	41.97	44.16	354.39
003S014W27C001S/00761	30.74	60.61	35.96	30.30	23.85	13.09	22.44	2.41	13.86	35.00	41.97	44.16	354.39

7450 - Lomita, City	JUL	AUG	SEPT	OCT	NOV	DEC	JAN	FEB	MAR	APR	MAY	JUN	TOTAL
SWN/Owner No.	0.00	0.00	0.00	0.00	0.00	0.00	0.00	0.00	0.00	0.00	0.00	6.23	6.23
003S014W29C003S/15	0.00	0.00	0.00	0.00	0.00	0.00	0.00	0.00	0.00	0.00	0.00	6.23	6.23

7364 - Kinder Morgan Liquids Terminals LLC	JUL	AUG	SEPT	OCT	NOV	DEC	JAN	FEB	MAR	APR	MAY	JUN	TOTAL
SWN/Owner No.	3.84	2.35	0.93	3.25	4.12	4.38	2.66	3.56	3.88	1.39	4.86	4.30	39.52
002S14W23H17S/1391E	3.84	2.35	0.93	3.25	4.12	4.38	2.66	3.56	3.88	1.39	4.86	4.30	39.52

7490 - Manhattan Beach, City of	JUL	AUG	SEPT	OCT	NOV	DEC	JAN	FEB	MAR	APR	MAY	JUN	TOTAL
SWN/Owner No.	11.99	11.76	6.03	8.91	1.49	5.86	1.25	1.67	2.91	22.39	23.96	33.18	131.40
003S014W29C003S/15	7.99	9.01	1.49	5.40	1.49	1.42	0.10	0.70	0.04	22.39	0.00	0.00	50.03
003S014W29D005S/11-A	4.00	2.75	4.54	3.51	0.00	4.44	1.15	0.97	2.87	0.00	23.96	33.18	81.37

Appendix A - Groundwater Extractions (acre-feet)

7284 - Honeywell International (NCWUP)	JUL	AUG	SEPT	OCT	NOV	DEC	JAN	FEB	MAR	APR	MAY	JUN	TOTAL
SWN/Owner No.	0.00	0.00	0.00	0.00	0.00	0.00	0.00	0.00	7.12	0.00	0.00	4.42	11.54
3S/14W-35P99D	0.00	0.00	0.00	0.00	0.00	0.00	0.00	0.00	7.12	0.00	0.00	4.42	11.54

7514 - Montrose Chemical Corp. (NCWUP)	JUL	AUG	SEPT	OCT	NOV	DEC	JAN	FEB	MAR	APR	MAY	JUN	TOTAL
SWN/Owner No.	0.00	0.00	0.05	0.00	0.00	-0.48	0.00	0.00	-2.66	0.00	0.00	-2.83	-5.92
G-EW-4	0.00	0.00	20.82	0.00	0.00	13.35	0.00	0.00	10.59	0.00	0.00	23.76	68.52
004S014W01N002S/G-IW-1	0.00	0.00	-56.36	0.00	0.00	-40.17	0.00	0.00	-32.28	0.00	0.00	-70.87	-199.68
004S014W01N003S/G-IW-3	0.00	0.00	-55.66	0.00	0.00	-47.51	0.00	0.00	-44.96	0.00	0.00	-41.07	-189.20
004S014W01N004S/G-IW-7	0.00	0.00	-38.34	0.00	0.00	-29.51	0.00	0.00	-17.43	0.00	0.00	-48.24	-133.52
004S014W01P002S/UBAEW1	0.00	0.00	3.18	0.00	0.00	0.96	0.00	0.00	0.97	0.00	0.00	1.35	6.46
004S014W01P003S/BF-EW-5	0.00	0.00	1.74	0.00	0.00	1.09	0.00	0.00	0.60	0.00	0.00	0.90	4.33
004S014W12B002S/UBAEW3	0.00	0.00	4.21	0.00	0.00	5.10	0.00	0.00	4.03	0.00	0.00	6.46	19.80
004S014W12B005S/BF-EW-1	0.00	0.00	5.73	0.00	0.00	4.25	0.00	0.00	3.36	0.00	0.00	5.38	18.72
004S014W12B006S/G-EW-1	0.00	0.00	43.79	0.00	0.00	34.02	0.00	0.00	27.40	0.00	0.00	46.66	151.87
004S014W12G001S/BF-EW-3	0.00	0.00	9.31	0.00	0.00	10.29	0.00	0.00	7.98	0.00	0.00	13.35	40.93
004S014W12J001S/BF-EW-2	0.00	0.00	17.66	0.00	0.00	14.63	0.00	0.00	11.79	0.00	0.00	18.90	62.98
004S014W12J002S/BF-EW-4	0.00	0.00	26.33	0.00	0.00	20.82	0.00	0.00	16.89	0.00	0.00	25.05	89.09
004S014W12J003S/G-EW-2	0.00	0.00	12.76	0.00	0.00	9.65	0.00	0.00	6.38	0.00	0.00	9.35	38.14
004S014W12L001S/G-EW-3	0.00	0.00	4.88	0.00	0.00	2.55	0.00	0.00	2.02	0.00	0.00	6.19	15.64

Appendix A - Groundwater Extractions (acre-feet)

7093 - Phillips 66 Company	JUL	AUG	SEPT	OCT	NOV	DEC	JAN	FEB	MAR	APR	MAY	JUN	TOTAL
SWN/Owner No.	444.42	537.51	514.77	530.02	512.55	528.68	501.26	465.80	498.56	485.04	499.19	467.12	5,984.92
004S013W21J003S/5	31.46	31.31	30.17	30.70	28.77	29.56	17.85	25.97	27.39	26.13	27.94	27.43	334.68
004S013W21R011S/CBP Well 6	276.85	272.33	256.85	270.00	265.30	266.96	267.67	240.62	251.95	239.41	243.72	231.40	3,083.06
004S013W31N004S/LA006	36.69	0.13	0.00	0.00	0.00	0.00	0.00	0.00	0.00	0.00	0.00	0.00	36.82
004S013W31P003S/7	99.42	233.74	227.75	229.32	218.48	232.16	215.74	199.21	219.22	219.50	227.53	208.29	2,530.36

7655 - Rolling Hills Country Club	JUL	AUG	SEPT	OCT	NOV	DEC	JAN	FEB	MAR	APR	MAY	JUN	TOTAL
SWN/Owner No.	64.00	61.00	46.00	36.00	14.00	10.00	7.00	3.00	6.00	13.00	26.00	28.00	314.00
004S014W34H002S/Lake Well 2	64.00	61.00	46.00	36.00	14.00	10.00	7.00	3.00	0.00	0.00	0.00	0.00	241.00
004S014W35F002S/PLANT	0.00	0.00	0.00	0.00	0.00	0.00	0.00	0.00	6.00	13.00	26.00	28.00	73.00

7659 - Roman Catholic Archbishop of Los Angeles	JUL	AUG	SEPT	OCT	NOV	DEC	JAN	FEB	MAR	APR	MAY	JUN	TOTAL
SWN/Owner No.	26.85	27.81	33.33	34.41	21.73	20.20	16.58	4.90	3.51	21.89	29.15	32.61	272.97
002S014W18J001S/AA	19.22	16.97	25.02	24.74	20.28	20.20	16.58	4.88	3.51	21.74	29.15	28.52	230.81
002S014W18Q002S/HOLY1	7.63	10.84	8.31	9.67	1.45	0.00	0.00	0.02	0.00	0.15	0.00	4.09	42.16

7680 - SCI Funeral Services	JUL	AUG	SEPT	OCT	NOV	DEC	JAN	FEB	MAR	APR	MAY	JUN	TOTAL
SWN/Owner No.	6.49	3.78	4.58	5.60	5.07	5.86	6.04	3.52	2.08	4.69	5.13	4.92	57.76
003S014W33E001S/7Z 83	6.49	3.78	4.58	5.60	5.07	5.86	6.04	3.52	2.08	4.69	5.13	4.92	57.76

7701 - Shell Oil Co (NCWUP)	JUL	AUG	SEPT	OCT	NOV	DEC	JAN	FEB	MAR	APR	MAY	JUN	TOTAL
SWN/Owner No.	0.00	0.00	19.86	0.00	0.00	27.71	0.00	0.00	24.97	0.00	0.00	36.34	108.88
004S013W10E007S/DD-3	0.00	0.00	9.75	0.00	0.00	11.53	0.00	0.00	11.03	0.00	0.00	21.34	53.65
004S013W10K002S/DOM-GSP-R2M	0.00	0.00	10.11	0.00	0.00	16.18	0.00	0.00	13.94	0.00	0.00	15.00	55.23

Appendix A - Groundwater Extractions (acre-feet)

7702 - Shell Oil (Wilmington) (NCWUP)	JUL	AUG	SEPT	OCT	NOV	DEC	JAN	FEB	MAR	APR	MAY	JUN	TOTAL
SWN/Owner No.	0.00	0.00	4.97	0.00	0.00	2.86	0.00	0.00	2.14	0.00	0.00	2.87	12.84
004S013W27F005S/H-33S	0.00	0.00	0.03	0.00	0.00	0.01	0.00	0.00	0.02	0.00	0.00	0.02	0.08
004S013W27C007S/H-35	0.00	0.00	0.56	0.00	0.00	0.53	0.00	0.00	0.17	0.00	0.00	0.35	1.61
004S013W27F004S/H-52R	0.00	0.00	0.10	0.00	0.00	0.10	0.00	0.00	0.23	0.00	0.00	0.43	0.86
004S013W27F001S/H-64	0.00	0.00	0.83	0.00	0.00	0.43	0.00	0.00	0.40	0.00	0.00	0.82	2.48
004S013W27F002S/H-66	0.00	0.00	0.42	0.00	0.00	0.31	0.00	0.00	0.22	0.00	0.00	0.16	1.11
004S013W27F003S/H-68	0.00	0.00	0.20	0.00	0.00	0.10	0.00	0.00	0.18	0.00	0.00	0.14	0.62
004S013W27L006S/H-70	0.00	0.00	1.05	0.00	0.00	0.41	0.00	0.00	0.65	0.00	0.00	0.62	2.73
004S013W27C008S/H-91	0.00	0.00	0.76	0.00	0.00	0.31	0.00	0.00	0.02	0.00	0.00	0.08	1.17
004S013W27C110S/H-94R	0.00	0.00	0.01	0.00	0.00	0.14	0.00	0.00	0.00	0.00	0.00	0.09	0.24
004S013W27C009S/H-97	0.00	0.00	0.29	0.00	0.00	0.00	0.00	0.00	0.00	0.00	0.00	0.00	0.29
004S013W27L007S/ H-115	0.00	0.00	0.39	0.00	0.00	0.25	0.00	0.00	0.08	0.00	0.00	0.08	0.80
004S013W27E003S/H-121R	0.00	0.00	0.33	0.00	0.00	0.27	0.00	0.00	0.17	0.00	0.00	0.08	0.85

7720 - Southern California Edison Co.	JUL	AUG	SEPT	OCT	NOV	DEC	JAN	FEB	MAR	APR	MAY	JUN	TOTAL
SWN/Owner No.	2.13	0.08	3.01	1.85	1.19	1.31	0.66	1.42	1.22	1.25	1.64	2.39	18.15
003S014W34N004S/SCECO	2.13	0.08	3.01	1.85	1.19	1.31	0.66	1.42	1.22	1.25	1.64	2.39	18.15

7807 - Tesoro Refining & Marketing Co., LLC	JUL	AUG	SEPT	OCT	NOV	DEC	JAN	FEB	MAR	APR	MAY	JUN	TOTAL
SWN/Owner No.	644.15	636.82	853.45	876.79	942.36	911.68	886.13	892.11	859.89	922.49	825.35	712.06	9,963.28
W-REMED	0.02	0.02	0.10	0.08	0.30	0.23	0.07	0.00	0.00	0.00	0.00	0.00	0.82
004S013W16J006S/WW-14	65.48	37.55	114.29	117.24	133.91	129.78	133.13	121.72	109.05	123.14	148.64	146.85	1,380.78
004S013W16R003S/Well 17	275.81	320.19	302.19	304.11	305.98	339.31	330.10	328.44	283.76	342.68	333.03	365.67	3,831.27
004S013W21H008S/Well 16	0.00	0.00	172.56	242.26	253.84	230.52	239.79	223.58	195.64	223.53	106.99	0.00	1,888.71

7807 - Tesoro Refining & Marketing Co., LLC	JUL	AUG	SEPT	OCT	NOV	DEC	JAN	FEB	MAR	APR	MAY	JUN	TOTAL
SWN/Owner No.	644.15	636.82	853.45	876.79	942.36	911.68	886.13	892.11	859.89	922.49	825.35	712.06	9,963.28
004S013W22F007S/SRP12	7.19	5.03	0.60	0.00	4.83	23.25	26.15	21.46	24.86	22.91	24.21	23.59	184.08
004S013W27L005S/18	0.00	0.00	128.26	103.24	109.35	61.72	82.94	86.11	133.81	106.47	113.23	81.67	1,006.80
004S013W27M006S/15	161.86	150.14	16.48	0.00	0.00	0.00	0.00	12.00	0.00	0.00	0.00	0.00	340.48
004S013W27N006S/SHE12	126.80	115.97	110.81	100.48	126.08	118.83	67.29	90.98	109.75	97.80	91.51	88.92	1,245.22
009S099W99P099S/C-REMED	6.99	7.92	8.16	9.38	8.07	8.04	6.66	7.82	3.02	5.96	7.74	5.36	85.12

7510 - Torrance Refining Company LLC	JUL	AUG	SEPT	OCT	NOV	DEC	JAN	FEB	MAR	APR	MAY	JUN	TOTAL
SWN/Owner No.	94.71	94.72	88.31	84.28	41.18	96.64	84.22	78.67	81.88	41.31	96.09	80.11	962.12
004S014W02F001S/EW-5	36.28	36.11	33.77	32.04	17.71	22.89	2.77	19.90	12.79	0.04	20.26	12.45	247.01
004S014W02L002S/EW-3	0.00	0.00	0.00	0.00	2.66	13.45	15.60	8.37	11.43	0.92	16.40	15.42	84.25
004S014W02M004S/EW-1	0.00	0.00	0.00	0.00	0.00	12.72	14.83	7.54	8.94	0.00	11.78	11.67	67.48
004S014W02P001S/EW-02R	29.18	29.05	27.20	26.50	17.02	29.29	30.29	27.55	27.48	20.30	28.22	24.68	316.76

7850 - Torrance, City of	JUL	AUG	SEPT	OCT	NOV	DEC	JAN	FEB	MAR	APR	MAY	JUN	TOTAL
SWN/Owner No.	441.39	408.38	367.55	246.92	374.30	375.04	475.48	411.66	395.22	429.49	405.97	396.78	4,728.18
003S014W34C003S/9	51.12	129.69	117.11	67.38	149.95	167.95	112.31	115.44	136.78	100.46	148.42	107.66	1,404.27
003S014W34F005S/Well 10	375.73	231.70	215.47	155.63	196.73	165.29	255.11	210.24	207.75	251.17	192.29	205.65	2,662.76
003S014W34F006S/Well 11	14.54	46.99	34.97	23.91	27.62	41.80	108.06	85.98	50.69	77.86	65.26	83.47	661.15

7917- Water Replenishment District (Extraction Exemption)	JUL	AUG	SEPT	OCT	NOV	DEC	JAN	FEB	MAR	APR	MAY	JUN	TOTAL
SWN/Owner No.	48.39	283.79	369.51	221.09	0.00	0.00	0.00	60.76	422.25	176.67	0.00	0.00	1,582.46
004S014W04R001S/Delthorne Park	0.00	248.49	283.66	170.23	0.00	0.00	0.00	47.47	333.10	146.41	0.00	0.00	1,229.36
004S014W04R002S/City Yard	48.39	35.30	85.85	50.86	0.00	0.00	0.00	13.29	89.15	30.26	0.00	0.00	353.10

Appendix B

Successions of Adjudicated Rights
as of
June 2025

Appendix B – Succession of Adjudicated Rights
June 2025 (acre-feet)

ABC NURSERY, INC			(NOW KNOWN AS BARCLAY HOLLANDER CORP)		
SUCCESSOR TO JENKINS, HARRY C	1.80		BARCLAY, RICHARD AND R A WATT		
SUCCESSOR TO TITLE, SIDNEY R AND CHARLOTTE W	13.60		SUCCESSORS TO EMMA J OSBORN	32.66	
SUCCESSOR TO VERBURG, WILLIAM AND CLARA B	6.70		SUCCESSORS IN PART TO ISABELA J GRANZ ESTATE	13.55	
SUCCESSOR IN PART TO UNITED CALIFORNIA BANK	2.00		SUCCESSORS IN PART TO GEORGE R MURDOCK SOLD TO CITY OF TORRANCE	13.75	
TOTAL		24.10	TOTAL	-59.96	0.00
ABELL, FRANK	1.80		BAUMAN, GUS A	0.00	
SOLD TO CITY OF INGLEWOOD	-1.80		TRANSFERRED TO PALOS VERDES BEGONIA FARM		
TOTAL		0.00	TOTAL		0.00
ALCAST FOUNDRY, ET AL	7.20		BEGO CORPORATION	4.10	
SOLD TO CITY OF TORRANCE	-7.20		SOLD TO ESTATE OF GOLDA DELANEY	-4.10	
TOTAL		0.00	TOTAL		0.00
ALLIED CHEMICAL CORP (SEE INDUSTRIAL CHEMICAL DIVISION, ALLIED CHEMICAL CORP)			BELVIDERE MUTUAL WATER CO	33.40	
ALLIED CORP (FORMERLY: ALLIED CHEMICAL CORP) (NOW KNOWN AS ALLIED-SIGNAL, INC [EL SEGUNDO OFFICE])			SOLD TO CITY OF TORRANCE	-33.40	
ALLIED-SIGNAL, INC (TORRANCE OFFICE)			TOTAL		0.00
SUCCESSOR TO GARRETT CORP, THE (MERGED WITH HONEYWELL INTERNATIONAL, INC AND NAME CHANGED TO HONEYWELL INTERNATIONAL, INC)	22.50		BLACK, DANA		
TOTAL	-22.50		SUCCESSOR IN PART TO ESTATE OF JOHN GRANT	11.80	
ALLIED-SIGNAL, INC (EL SEGUNDO OFFICE) (FORMERLY: ALLIED CORP) (MERGED WITH HONEYWELL INTERNATIONAL, INC AND NAME CHANGED TO HONEYWELL INTERNATIONAL, INC)	255.00		SOLD TO ECOGAS, INC.	-11.80	
TOTAL	-255.00		TOTAL		0.00
ALWAG, HILARIO S AND EMMA			BOISE CASCADE BUILDING CO		
SUCCESSOR TO T C NAVARRO	53.90		SUCCESSOR IN PART TO JOUGHIN TORRANCE RANCH	16.92	
SUCCESSOR TO PEGGY SWICK	5.50		SOLD TO INGLEWOOD, CITY OF	-16.92	
SOLD TO TORRANCE UNIFIED SCHOOL DISTRICT	-59.40		TOTAL		0.00
TOTAL		0.00	BOARD OF RETIREMENT-LOS ANGELES CO EMPL RET SYS		
AMERICAN PLANT GROWERS, INC			SECOND WEST COAST BASIN JUDGMENT (NOW KNOWN AS LOS ANGELES COUNTY WESTERN AVE GOLF)		
SECOND WEST COAST BASIN JUDGMENT	2.60		BOEING COMPANY		
SUCCESSOR TO BEN CLUFF DAIRY	7.40		LEGAL SUCCESSOR BY VIRTUE OF A MERGER FROM MCDONNELL DOUGLAS CORPORATION (MERGER BOEING & MCDONNELL)	1.70	
SOLD TO SUNRISE GROWERS, INC	-10.00		TOTAL		1.70
SUCCESSOR TO SUNRISE GROWERS, INC	10.00		BRANDSMA, MAYNARD		
SOLD TO VUKELICH MIKE, JR.	-10.00		SUCCESSOR IN PART TO ESTATE OF JOHN GRANT	11.80	
TOTAL		0.00	SOLD TO HILLSIDE MEMORIAL PARK	-11.80	
ANDERSON, REMBERT C	80.50		TOTAL		0.00
SOLD TO SPARKLETTS DRINKING WATER CORP	-80.50		BURKE, W F AND LOIS PRICE	9.50	
TOTAL		0.00	SOLD TO H S SCOTT	-9.50	
AQUA CAPITAL MANAGEMENT LP			TOTAL		0.00
SUCCESSOR TO ECOGAS	11.80		CBS INC		
SOLD TO HILLSIDE MEMORIAL PARK AND MORTUARY	-11.80		FORMERLY COLUMBIA BROADCASTING SYS INC	18.50	
TOTAL		0.00	SOLD TO MORAN, RONALD E	-9.00	
ASAHI FANCY KOI, INC			TOTAL		9.50
SUCCESSOR IN PART TO JAKE ENGELSMA	2.00		CALIFORNIA, STATE OF		
TOTAL		2.00	SUCCESSOR TO ROBERT L FULLILOVE	1.00	
ASSOCIATED SOUTHERN INVESTMENT CO (FORMERLY EDISON SECURITIES CO)	46.70		SUCCESSOR TO JOE MONIZ JR	2.20	
SOLD TO SOUTHERN CALIFORNIA EDISON CO	-46.70		SUCCESSOR IN PART TO KELLY PIPE CO	16.30	
TOTAL		0.00	SUCCESSOR IN PART TO FLAVIO RODRIGUEZ	4.00	
ATLANTIC RICHFIELD CO (FORMERLY RICHFIELD OIL CO)	4,428.00		SUCCESSOR IN PART TO A H SMITH (SAM SURBER AND FRED A SMITH)	2.60	
SUCCESSOR TO MANVILLE SALES CORP	881.00		SOLD TO SPARKLETTS DRINKING WATER CORP	-26.10	
SOLD TO TESORO REFINING AND MARKETING COMPANY LLC (6-13-2013)	-5,309.00		TOTAL		0.00
TOTAL		0.00	CALIFORNIA WATER SERVICE CO	3,071.00	
AUTOMATION INDUSTRIES			SUCCESSOR TO PALOS VERDES WATER CO	999.00	
SUCCESSOR TO HARRIS TUBE, INC	0.70		TOTAL		4,070.00
TOTAL		0.70	CALIFORNIA WATER SERVICE CO (DOMINGUEZ)		
BALLMAN, ROSEMARY N	7.00		DOMINGUEZ WATER CO MERGED WITH AND INTO CALIFORNIA WATER SERVICE CO, WATERMASTER ACCOUNT KNOWN AS CALIFORNIA WATER SERVICE CO (DOMINGUEZ)	10,162.45	
SOLD TO UNITED CALIFORNIA BANK	-7.00		SUCCESSOR IN PART TO HONEYWELL INTERNATIONAL INC	255.00	
TOTAL		0.00	TOTAL		10,417.45
BANK OF AMERICA NATIONAL TRUST AND SAVINGS ASSOCIATION (TRUST BI-51)	0.10		CARSON ESTATE CO	130.00	
RELEASED TO MICHAEL L ROCKWELL	-0.10		SOLD TO DOMINGUEZ WATER CORP	-130.00	
TOTAL		0.00	TOTAL		0.00
BARCLAY HOLLANDER CORP (FORMERLY BARCLAY HOLLANDER CURCI INC)			CARSON-HARBOR VILLAGE MOBILE HOME PARK		
SUCCESSOR IN PART TO JOUGHIN TORRANCE RANCH	3.33		SUCCESSOR TO ETCHEMENDY, CAROLINE, ESTATE OF	8.20	
SOLD TO TORRANCE, CITY OF	-3.33		SOLD TO MONTROSE CHEMICAL CORPORATION OF CALIFORNIA (9-28-2011)	-1.20	
TOTAL		0.00	TOTAL		7.00
BARCLAY HOLLANDER CURCI INC			CARSON-MADRONA CO		
			SUCCESSOR TO CHANSLOR-WESTERN OIL AND DEVELOP CO	104.00	
			TOTAL		104.00
			CENTURY BUILDERS		
			SUCCESSOR TO UNION NURSERY, INC	4.70	
			TOTAL		4.70
			CHANDLERS PALOS VERDES SAND AND GRAVEL CORP		
			SECOND WEST COAST BASIN JUDGMENT	95.20	
			SUCCESSOR TO SOUTHWESTERN PORTLAND CEMENT CO	15.00	

SUCCESSOR TO TORRANCE SAND AND GRAVEL CORP	184.00		TOTAL		0.00
SOLD TO ROLLING HILLS COUNTRY CLUB	-290.00		DON WILSON BUILDERS		
TOTAL		4.20	SUCCESSORS TO KASUO, ISAMU, AND YOSHIKI R KITA	32.60	
CHANSOR-WESTERN OIL AND DEVELOPMENT CO (FORMERLY CHANSOR-CANFIELD MIDWAY OIL CO)	104.00		SOLD TO DOMINGUEZ WATER CORP	-32.60	
SOLD TO CARSON-MADRONA CO	-104.00		TOTAL		0.00
TOTAL		0.00	DOUGLAS AIRCRAFT CO, INC (SEE MCDONNELL DOUGLAS CORP)		
CHEMICALS CO OF ALLIED CORP (FORMERLY INDUSTRIAL CHEMICAL DIVISION, ALLIED CHEMICAL CORP)			EARLY, H J AND DAISY	111.00	
(NOW KNOWN AS ALLIED CORP)			SOLD TO DOMINGUEZ WATER CORP	-91.00	
CHEVRON USA INC	4,541.70		SOLD TO SAMUEL R AND RAYMOND S FUJIMOTO	-20.00	
(FORMERLY STANDARD OIL CO OF CALIFORNIA)			TOTAL		0.00
SUBJECT TO LONG TERM LEASE FROM ISABELLA GRANZ PER JUDGEMENT	59.60		ECOGAS, INC.		
TOTAL		4,601.30	SUCCESSOR TO BLACK, DANA	11.80	
CHRISTIE, CLEM, DON C FOHL AND LEON LARSON (TRUSTEES OF WILMINGTON CEMETERY ASSOC)	0.02		SOLD TO AQUA CAPITAL MANAGEMENT LP	-11.80	
ABANDONED WATER RIGHT	-0.02		TOTAL		0.00
TOTAL		0.00	ECO SERVICES OPERATIONS LLC (FORMERLY SOLVAY USA INC.)	521.00	
CHURCHILL DOWNS CALIFORNIA CO			TOTAL		521.00
SUCCESSOR TO HOLLYWOOD PARK OPERATING CO	282.00		EDISON SECURITIES CO (NOW KNOWN AS ASSOCIATED SOUTHERN INVESTMENT CO)		
SOLD TO HOLLYWOOD PARK LAND COMPANY, LLC	-282.00		EL SEGUNDO, CITY OF	953.00	
TOTAL		0.00	TOTAL		953.00
CLUFF, BEN DAIRY			ENGELSMA, JAKE		
SUCCESSOR TO EDWARD AND EMILY COST	7.40		SUCCESSOR TO WILBUR HORNSTRA	14.10	
SOLD TO AMERICAN PLANT GROWERS, INC	-7.40		SOLD TO ASAHI FANCY KOI, INC	-2.00	
TOTAL		0.00	TRANSFERRED TO SUSAN ENGELSMA, TRUSTEE ET AL	-12.10	
COAST FOREST PRODUCTS			TOTAL		0.00
SUCCESSOR TO SOUTHWEST STEEL ROLLING MILLS	3.40		ENGELSMA, SUSAN; TRUSTEE OF THE SUSAN ENGELSMA TRUST		
SOLD TO GEORGIA-PACIFIC CORP	-3.40		TRANSFERRED FROM JAKE ENGLESMA	12.10	
TOTAL		0.00	TOTAL		12.10
COASTLINE CHURCH OF CHRIST			EQUILON ENTERPRISES, LLC		
SUCCESSOR TO LERMENS, EVELYN	0.70		SUCCESSOR TO TEXACO REFINING AND MARKETING, INC	3,432.00	
TOTAL		0.70	SOLD TO SHELL OIL PRODUCTS US	-3,432.00	
COLLISTER, CAMERON			TOTAL		0.00
SUCCESSOR TO JOUGHIN TORRANCE RANCH	136.82		ETCHEMENDY, CAROLINE, ESTATE OF	8.20	
QUITCLAIMED TO NORMANDIE PARK	-136.82		SOLD TO CARSON-HARBOR VILLAGE MOBILE HOME PARK	-8.20	
TOTAL		0.00	TOTAL		0.00
COLUMBIA BROADCASTING SYSTEM, INC (NOW KNOWN AS CBS INC)			EVERGREEN AMERICA CORP		
CONOCOPHILLIPS COMPANY			SUCCESSOR TO POTHOS CORP	5.40	
SUCCESSOR TO TOSCO CORPORATION (NOW KNOWN AS PHILLIPS 66 COMPANY)			TOTAL		5.40
COST, EDWARD AND EMILY	7.40		EWING, CARMELITA ROSECRANS	91.30	
SOLD TO BEN CLUFF DAIRY	-7.40		SOLD TO SOUTHERN CALIFORNIA WATER CO	-91.30	
TOTAL		0.00	TOTAL		0.00
CURTIS, OWEN W	3.80		EWING, NED ET AL		
SOLD TO SOUTHERN CALIFORNIA WATER CO	-3.44		SUCCESSOR IN PART TO ISABEL J GRANZ ESTATE	6.50	
TOTAL		0.36	SOLD TO R A WATT, INC	-6.50	
DEL AMO ESTATE CO	121.00		TOTAL		0.00
SOLD TO DOMINGUEZ WATER CORP	-121.00		FLESH, LESLIE R AND ANDOR PASTERNAK, ET AL		
TOTAL		0.00	SUCCESSORS TO ALFRED D AND RUTH SEABACK	3.50	
DELANEY, GOLDA, ESTATE OF (FORMERLY ARTHUR J DELANEY)			SOLD TO STANLEY C LAGERLOF	-3.50	
SUCCESSOR TO BEGO CORP	4.10		TOTAL		0.00
TOTAL		4.10	FLETCHER OIL AND REFINING CO (FORMERLY FLETCHER OIL CO)	86.30	
DENNIS, ESTHER M SHEETS (FORMERLY ESTHER M SHEETS)	5.50		SUCCESSOR TO FLETCHER, ROBERT G ET AL	3.70	
SOLD TO TORRANCE, CITY OF	-5.50		SOLD TO WESTERN WATER CO	-90.00	
TOTAL		0.00	TOTAL		0.00
DESSER ENTERPRISES, INC.			FLETCHER, ROBERT G, DANIEL S, AND WILFRED O		
SECOND WEST COAST BASIN JUDGMENT	0.00	0.00	SUCCESSOR TO FRED A JUNGQUIST	3.70	
SOLD TO MYRON Z. CHLAVIN AND NETTIE DESSER TRUST AND JHD PROPERTIES, LLC	-0.00		SOLD TO FLETCHER OIL AND REFINING CO	-3.70	
TOTAL		0.00	TOTAL		0.00
DOMINGUEZ ESTATE CO	254.00		FUJIMOTO, SAMUEL R (FORMERLY KNOWN AS FUJIMOTO, SAMUEL R AND RAYMOND S)		
SOLD TO DOMINGUEZ WATER CORP	-254.00		SUCCESSOR IN PART TO H J AND DAISY EARLY	20.00	
TOTAL		0.00	SOLD TO FUJIMOTO, SAMUEL R, STEVEN T AND JON T JOINT TENANTS	-20.00	
DOMINGUEZ WATER CORP (NOW KNOWN AS DOMINGUEZ WATER CO)			TOTAL		0.00
DOMINGUEZ WATER CO (FORMERLY KNOWN AS DOMINGUEZ WATER CORP)	9,477.80		FUJIMOTO, SAMUEL R AND RAYMOND S (SEE FUJIMOTO, SAMUEL R)		
SUCCESSOR TO CARSON ESTATE CO	130.00		FUJIMOTO, SAMUEL R, STEVEN T AND JON K, JOINT TENANTS		
SUCCESSOR TO DEL AMO ESTATE CO	121.00		SUCCESSOR TO FUJIMOTO, SAMUEL R	20.00	
SUCCESSOR TO DOMINGUEZ ESTATE CO	254.00		TOTAL		20.00
SUCCESSOR TO DON WILSON BUILDERS	32.60		FULLILOVE, ROBERT L	1.00	
SUCCESSOR TO HEYDENBECK, JEANETTE R	0.70		SOLD TO STATE OF CALIFORNIA	-1.00	
SUCCESSOR TO NAKANO, KIKUNO, ET AL	19.30		TOTAL		0.00
SUCCESSOR IN PART TO H J EARLY	91.00		FUTURA INDUSTRIES, INC		
SUCCESSOR IN PART TO R A WATT, INC	61.85		SUCCESSOR TO SPANISH AMERICAN INSTITUTE	44.40	
SOLD IN PART TO WATSON LAND CO	-37.60		SOLD TO KAUFMAN, LEO AND SHELDON BAER	-44.40	
SUCCESSOR TO THORPE, GREGORY	11.80		TOTAL		0.00
DOMINGUEZ WATER CO MERGED WITH AND INTO CALIFORNIA WATER SERVICE CO, WATERMASTER ACCOUNT KNOWN AS CALIFORNIA WATER SERVICE CO (DOMINGUEZ)	-10,162.45				

West Coast Basin Watermaster

GARRETT CORP, THE			MANAGEMENT L.P.		
SUCCESSOR TO SHINODA BROTHERS INC	22.50		TOTAL		104.10
TRANSFERRED TO ALLIED-SIGNAL INC	-22.50		HOCKWALD, SIGMUND S AND LIONEL S	12.50	
(TORRANCE OFFICE)			SOLD TO HILLSIDE MEMORIAL PARK	-12.50	
TOTAL		0.00	TOTAL		0.00
GATX TANK STORAGE TERMINALS CORP			HOLLYWOOD PARK INC		
SUCCESSOR TO PHILLIPS PETROLEUM CO	167.00		(FORMERLY HOLLYWOOD TURF CLUB)		
SOLD TO KINDER MORGAN LIQUIDS	-167.00		(NOW KNOWN AS HOLLYWOOD PARK OPERATING CO)		
TERMINALS, LLC.			HOLLYWOOD PARK LAND COMPANY, LLC		
TOTAL		0.00	SUCCESSOR TO CHURCHILL DOWNS	282.00	
GEORGIA-PACIFIC CORP			CALIFORNIA COMPANY		
SUCCESSOR TO COAST FOREST PRODUCTS	3.40		SOLD TO CITY OF INGLEWOOD	-282.00	
SOLD TO INGLEWOOD, CITY OF	-3.40		TOTAL		0.00
TOTAL		0.00	HOLLYWOOD PARK OPERATING CO		
GERAHUE LAND CO			(FORMERLY HOLLYWOOD PARK INC)	282.00	
SUCCESSOR AND ASSIGNEE FOR A S	11.90		SOLD TO CHURCHILL DOWNS CALIFORNIA CO	-282.00	
JOHNSTON DRILL CO			TOTAL		0.00
ABANDONED WATER RIGHT	-11.90		HOLLYWOOD TURF CLUB		
TOTAL		0.00	(NOW KNOWN AS HOLLYWOOD PARK INC)		
GILLINGHAM, FLORENCE R, ET AL	2.40		HONEYWELL INTERNATIONAL INC		
TOTAL		2.40	MERGED WITH ALLIED-SIGNAL INC (EL	277.50	
GOLDEN STATE WATER COMPANY			SEGUNDO AND TORRANCE OFFICES) AND		
SUCCESSOR TO SOUTHERN CALIFORNIA			THE CORP NAME CHANGED TO		
WATER COMPANY (NAME CHANGE)	7,502.24		HONEYWELL INTERNATIONAL INC		
TOTAL		7,502.24	SOLD IN PART TO CALIFORNIA WATER	-255.00	
GONZALES, FELIPE AND GABRIELA			SERVICE CO (DOMINGUEZ)		
(NOW KNOWN AS GONZALES, GABRIELA AND			TOTAL		22.50
MARIA R)			HONOLD, KRISTIN BRANDSMA		
GONZALES, GABRIELA AND MARIA R	34.30		SUCCESSOR IN PART TO ESTATE OF JOHN	11.80	11.80
(FORMERLY GONZALES, FELIPE AND GABRIELA)			GRANT		
SOLD TO TORRANCE, CITY OF	-34.30		HORNSTRA, WILBUR	14.10	
TOTAL		0.00	SOLD TO JAKE ENGELSMA	-14.10	
GRAND LAND CO			TOTAL		0.00
SUCCESSOR IN PART TO SMITH, A H, ET AL	5.70		HUGHES AIRCRAFT	0.00	0.00
ABANDONED WATER RIGHTS 1961-62	-5.70		(SEE 1981 JUDGMENT ORDER)		
TOTAL		0.00	HUNT, DONALD G		
GRANT, JOHN, ESTATE OF	59.00		SUCCESSOR TO JAMES SCANDA	1.90	
APPORTIONED IN PART TO BLACK, DANA	-11.80		SOLD TO KENICHI INOSE	-1.90	
APPORTIONED IN PART TO BRANDSMA,	-11.80		TOTAL		0.00
MAYNARD			INDUSTRIAL CHEMICAL DIVISION, ALLIED CHEMICAL		
APPORTIONED IN PART TO HONOLD, KRISTIN	-11.80		CORP		
BRANDSMA			(FORMERLY ALLIED CHEMICAL CORP, GEN		
APPORTIONED IN PART TO THORPE,	-11.80		CHEMICAL CO)		
GREGORY			(NOW KNOWN AS ALLIED CORP)		
APPORTIONED IN PART TO THORPE,	-11.80		INGLEWOOD, CITY OF	4,382.00	
TERRENCE			SUCCESSOR TO ABELL, FRANK	1.80	
TOTAL		0.00	SUCCESSOR TO BOISE CASCADE BUILDING	16.92	
GRANZ, ISABELA J	380.00		CO		
PARTITIONED TO HEIRS:			SUCCESSOR TO GEORGIA-PACIFIC CORP	3.40	
ISABELA J GRANZ ESTATE	-33.80		SUCCESSOR TO KAUFMAN, LEO AND	44.40	
JOUGHIN TORRANCE RANCH	-212.42		SHELDON BAER		
GEORGE R MURDOCK	-15.12		SUCCESSOR IN PART TO GEORGE R	1.37	
EMMA J OSBORN	-32.66		MURDOCK		
SUBJECT TO LONG TERM LEASE TO:	-59.60		SUCCESSOR TO HOLLYWOOD PARK LAND COMPANY LLC	282.00	
STANDARD OIL CO OF CALIF			TOTAL		4,731.89
SUPERIOR OIL CO	-26.40		INOSE ET AL		
TOTAL		0.00	(KEN K INOSE, KAY K INOSE, KIYOKO YOSHIYAMA,		
GRANZ, ISABELA J, ESTATE OF			KENICHI INOSE, KAYOKO K INOSE AND		
SUCCESSOR IN PART TO ISABELA J GRANZ	33.80		DAVID T NAKATANI, TRUSTEE OF THE INOSE CHILDREN		
SOLD IN PART TO RICHARD BARCLAY AND R A	-13.55		TRUST U/D/T DATE 11/1/78)		
WATT			(FORMERLY INOSE, KENICHI)		
SOLD IN PART TO NED EWING, ET AL	-6.50		SUCCESSOR TO HUNT, DONALD G	1.90	
SOLD IN PART TO R A WATT, INC	-13.75		SUCCESSOR TO THAXTER, RALPH AND LOIS A	3.50	
TOTAL		0.00	LENOIR		
HARRIS, R AND L			SOLD TO POTHOS CORP	-5.40	
SUCCESSOR TO LAWRENCE I LISTON	0.70		TOTAL		0.00
DISCLAIMED WATER RIGHT	-0.70		INOSE, KENICHI		
TOTAL		0.00	(NOW KNOWN AS INOSE ET AL)		
HARRIS TUBE, INC			JENKINS, HARRY C		
SUCCESSOR IN PART TO B ROBINSON AND	0.70		SUCCESSOR TO H L PERRY	1.80	
ASSOCIATES			SOLD TO ABC NURSERY, INC	-1.80	
TRANSFERRED TO AUTOMATION IND INC-	-0.70		TOTAL		0.00
HARRIS TUBE			JOHNS-MANVILLE PRODUCTS CORP		
TOTAL		0.00	(SEE JOHNS-MANVILLE SALES CORP)		
HAWTHORNE, CITY OF	1,882.00		JOHNS-MANVILLE SALES CORP		
TOTAL		1,882.00	(FORMERLY: JOHNS-MANVILLE PRODUCTS CORP		
HENDERSON, BEATRICE M	1.30		MANVILLE SERVICE CORP)		
ABANDONED WATER RIGHT	-1.30		(NOW KNOWN AS MANVILLE SALES CORP)		
TOTAL		0.00	TOTAL		0.00
HEYDENBECK, JEANETTE R			JOHNSTON, A S, DRILLING CO	11.90	
(FORMERLY JEANETTE R REIFSNYDER)	0.70		ASSIGNED TO GERAHUE LAND CO	-11.90	
SOLD TO DOMINGUEZ WATER CORP	-0.70		TOTAL		0.00
TOTAL		0.00	JONES, ANNA MAE	50.20	
HILLSIDE MEMORIAL PARK	16.70		SOLD TO CITY OF TORRANCE	-50.20	
SUCCESSOR TO SANTA FE LAND	39.50		TOTAL		0.00
IMPROVEMENT CO			JOUGHIN TORRANCE RANCH		
SUCCESSOR TO SIGMUND S AND LIONEL S	12.50		SUCCESSOR IN PART TO ISABELA J GRANZ	212.42	
HOCKWALD			SOLD IN PART TO BARCLAY HOLLANDER	-3.33	
SUCCESSOR TO THORPE, TERRENCE	11.80		CURCI INC		
SUCCESSOR TO BRANDSMA, MAYNARD	11.80		SOLD IN PART TO BOISE CASCADE BUILDING	-16.92	
SUCCESSOR TO AQUA CAPITAL	11.80		CO		

SOLD IN PART TO COLLISTER, CAMERON	-136.82		PARK, AND LOS ANGELES COUNTY		
SOLD IN PART TO R A WATT, INC	-55.35		CHESTER L. WASHINGTON GOLF COURSE	296.00	
TOTAL		0.00	TOTAL		363.70
JUNGQUIST, FRED A			LOS ANGELES COUNTY SANITATION DIST NO 2	102.00	
(FORMERLY KATHERINE P WOODMAN)	3.70		TOTAL		102.00
SOLD TO ROBERT G FLETCHER ET AL	-3.70		LOS ANGELES COUNTY WATERWORKS DISTRICT NO 13		
TOTAL		0.00	(NOW KNOWN AS LOMITA, CITY OF WATER		
KAHLERT, ET AL			SYSTEM WWD 13)		
AND SUCCESSOR IN PART TO KELLY PIPE CO	18.90		LOS ANGELES COUNTY WATERWORKS DISTRICT NO 22	551.00	
SOLD TO SPARKLETTS DRINKING WATER	-18.90		SOLD TO SOUTHERN CALIF WATER CO	-551.00	
CORP			TOTAL		0.00
TOTAL		0.00	LOS ANGELES COUNTY WESTERN AVE GOLF COURSE		
KAUFMAN, LEO AND SHELDON BAER			(FORMERLY BOARD OF RETIREMENT OF THE LOS		
SUCCESSOR TO FUTURA INDUSTRIES INC	44.40		ANGELES COUNTY EMPLOYEES RETIREMENT		
SOLD TO CITY OF INGLEWOOD	-44.40		SYSTEM)		
TOTAL		0.00	(NOW KNOWN AS LOS ANGELES CHESTER L		
KELLY PIPE CO	49.00		WASH GOLF)		
SOLD IN PART TO STATE OF CALIFORNIA	-16.30		LOYOLA MARYMOUNT UNIVERSITY		
SOLD IN PART TO KAHLERT, ET AL	-18.90		(FORMERLY LOYOLA UNIVERSITY OF LOS ANGELES)	48.10	
SOLD IN PART TO SPARKLETTS DRINKING	-13.80		TOTAL		48.10
WATER CORP			MANHATTAN BEACH, CITY OF	1,131.20	
TOTAL		0.00	TOTAL		1,131.20
KINDER MORGAN LIQUIDS TERMINALS, LLC.			MANVILLE SALES CORP	881.00	
SUCCESSOR TO GATX TANK STORAGE	167.00		(FORMERLY: JOHNS-MANVILLE SALES CORP		
TERMINALS CORP.			JOHNS-MANVILLE PRODUCTS		
TOTAL		167.00	CORP MANVILLE SERVICE)		
KITA, ISAMU, KASUO, AND YOSHIKI R	32.60		SOLD TO ATLANTIC RICHFIELD CO	-881.00	
SOLD TO DON WILSON BUILDERS	-32.60		TOTAL		0.00
TOTAL		0.00	MANVILLE SERVICE CORP		
KURTZ, GLADYS	3.50		(SEE JOHNS-MANVILLE SALES CORP)		
SOLD TO SPARKLETTS DRINKING WATER	-3.50		MARTIN BROTHERS BOX CO, INC	3.40	
CORP			SOLD TO SOUTHWEST STEEL ROLLING MILLS	-3.40	
TOTAL		0.00	TOTAL		0.00
LAGERLOF, STANLEY C			MAYFLOWER NURSERIES	0.00	
SUCCESSOR TO LESLIE R FLESCHE AND	3.50		(HERBERT SAKAYE FUKUWAI, DBA)		
ANDOR PASTERNAK, ET AL			TOTAL		0.00
SOLD TO SHELL OIL CO	-3.50		MCCANDLESS, JAMES	6.70	
TOTAL		0.00	SOLD TO SPARKLETTS DRINKING WATER	-6.70	
LAWLER, JAMES K	3.10		CORP		
SOLD TO B ROBINSON AND ASSOC	-3.10		TOTAL		0.00
TOTAL		0.00	MCDONNELL DOUGLAS CORP		
LERMENS, EVELYN			(FORMERLY DOUGLAS AIRCRAFT, CO INC)		
(FORMERLY LERMENS, ALFRED)	0.70		LONG TERM LEASE FROM UNITED STATES	1.70	
SOLD TO COASTLINE CHURCH OF CHRIST	-0.70		NAVY DEPARTMENT		
TOTAL		0.00	TRANSFERRED TO BOEING COMPANY		
LEUZINGER, EMMA L	1.40		BY VIRTUE OF A MERGER	-1.70	
TOTAL		1.40	TOTAL		0.00
LISTON, LAWRENCE	0.70		MONETA MUTUAL WATER CO	916.00	
SOLD TO R AND L HARRIS	-0.70		SOLD TO CITY OF TORRANCE	-916.00	
TOTAL		0.00	TOTAL		0.00
LITTLE, WILLIAM			MONIZ, JOE JR	2.20	
SUCCESSOR TO ROCKWELL, MICHAEL	0.10		SOLD TO STATE OF CALIFORNIA	-2.20	
SOLD TO WATT INDUSTRIAL PROPERTIES	-0.10		TOTAL		0.00
TOTAL		0.00	MONTROSE CHEMICAL CORPORATION OF CALIFORNIA		
LOCKHEED MARTIN CORPORATION			SUCCESSOR TO CARSON-HARBOR VILLAGE	1.20	
SUCCESSOR TO OCEAN INDUSTRIES	0.10		MOBILE HOME PARK (9-28-2011)		
TOTAL		0.10	TOTAL		1.20
LOMITA, CITY OF WATER SYSTEM (WWD 13)	1,352.00		MORAN, RONALD E		
(FORMERLY LOS ANGELES COUNTY			SUCCESSOR IN PART TO COLUMBIA	9.00	
WATERWORKS DISTRICT NO 13)			BROADCASTING SYSTEM, INC		
TOTAL		1,352.00	SOLD TO CITY OF TORRANCE	-9.00	
LONG BEACH, CITY OF	0.70		TOTAL		0.00
TOTAL		0.70	MORI, ROY H AND KENJI		
LOPES, FRANK	3.70		SECOND WEST COAST BASIN JUDGMENT	5.60	
TOTAL		3.70	SOLD TO NOZAKI, SUMIKICHI	-2.00	
LOS ANGELES, CITY OF	1,503.00		TOTAL		3.60
TOTAL		1,503.00	MURDOCK, GEORGE R		
LOS ANGELES COUNTY-ALONDRA PARK	28.70		SUCCESSOR IN PART TO ISABELA J GRANZ	15.12	
SUCCESSOR TO LOS ANGELES COUNTY	39.00		SOLD IN PART TO R BARCLAY AND R A WATT	-13.75	
FLOOD CONTROL DIST			SOLD IN PART TO CITY OF INGLEWOOD	-1.37	
MERGED WITH LOS ANGELES COUNTY	-67.70		TOTAL		0.00
CHESTER L. WASHINGTON GOLF COURSE			MYRON Z. CHLAVIN AND NETTIE DESSER TRUST AND JHD		
UNDER NEW NAME "LOS ANGELES COUNTY			PROPERTIES, LLC		
RECREATION FACILITIES"			SUCCESSOR TO DESSER ENTERPRISES, INC.	0.00	
TOTAL		0.00	TOTAL		0.00
LOS ANGELES COUNTY CHESTER L WASHINGTON			NAKANO, KIKUNO, ET AL	19.30	
GOLF COURSE			SOLD TO DOMINGUEZ WATER CORP	-19.30	
(FORMERLY LOS ANGELES COUNTY WESTERN AVENUE	296.00		TOTAL		0.00
GOLF COURSE)			NAVARRO, T C	53.90	
MERGED WITH LOS ANGELES COUNTY	-296.00		SOLD TO HILARIO S AND EMMA ALWAG	-53.90	
ALONDRA PARK UNDER NEW NAME "LOS			TOTAL		0.00
ANGELES COUNTY RECREATION			NORAIR, A DIVISION OF NORTHROP CORP		
FACILITIES"			(FORMERLY KNOWN AS NORTHROP AIRCRAFT, INC)		
TOTAL		0.00	(NOW KNOWN AS NORTHROP CORP)		
LOS ANGELES COUNTY FLOOD CONTROL DISTRICT	37.60		NORMANDIE PARK		
SUCCESSOR IN PART TO A H SMITH, ET AL	1.40		SUCCESSOR TO COLLISTER, CAMERON	136.82	
SOLD TO LOS ANGELES COUNTY - ALONDRA	-39.00		SOLD TO CITY OF TORRANCE	-136.82	
PARK			TOTAL		0.00
TOTAL		0.00	NORTHROP CORP		
LOS ANGELES COUNTY RECREATION FACILITIES			(FORMERLY KNOWN AS NORAIR, A DIV OF NORTHROP	38.15	
MERGER OF LOS ANGELES COUNTY ALONDRA	67.70				

West Coast Basin Watermaster

CORP)			TOTAL		72.30
TOTAL	38.15		ROLLING HILLS COUNTRY CLUB		
NOZAKI, SUMIKICHI			SUCCESSOR TO CHANDLERS PALOS VERDES	290.00	
SUCCESSOR IN PART TO MORI, ROY H AND	2.00		SAND AND GRAVEL CORP.		
KENJI			TOTAL		290.00
SUCCESSOR IN PART TO UNITED CALIFORNIA	5.00		RUFFNER CORP		
BANK			SUCCESSOR TO LOUIS M SEPULVEDA	0.70	
TOTAL	7.00		ABANDONED WATER RIGHT	-0.70	
OCEAN INDUSTRIES			TOTAL		0.00
SUCCESSOR TO WATT INDUSTRIAL PROPERTIES	0.10		RYAN AERONAUTICAL CO	20.20	
(NAME CHANGE)			SOLD TO SOUTHERN CALIFORNIA WATER CO	-20.20	
SOLD TO LOCKHEED MARTIN CORPORATION	-0.10		TOTAL		0.00
TOTAL	0.00		SANTA FE LAND IMPROVEMENT CO	39.50	
OSBORN, EMMA J			SOLD TO HILLSIDE MEMORIAL PARK	-39.50	
SUCCESSOR IN PART TO ISABELA J GRANZ	32.66		TOTAL		0.00
SOLD TO R BARCLAY AND R A WATT	-32.66		SCANDA, JAMES AND GEORGE NASSIN	1.90	
TOTAL	0.00		SOLD TO DONALD G HUNT	-1.90	
OTANI, CHISATO	0.00		TOTAL		0.00
TOTAL	0.00		SCHLAEGEL, KEITH W AND OPAL B	13.60	
PACIFIC CREST CEMETERY CO	17.70		SOLD TO SIDNEY R AND CHARLOTTE W TITLE	-13.60	
SUCCESSOR TO H S SCOTT	9.50		TOTAL		0.00
SUCCESSOR TO WADA, KAORU AND SATORU	12.20		SCI CALIFORNIA FUNERAL SERVICES INC		
SOLD TO SCI CALIFORNIA FUNERAL SERVICES INC.	-39.40		SUCCESSOR TO PACIFIC CREST CEMETERY CO	39.40	
TOTAL	0.00		TOTAL		39.40
PALOS VERDES BEGONIA FARM			SCOTT, H S		
SUCCESSOR TO GUS A BAUMAN	0.00		SUCCESSOR TO W F BURKE AND LOIS PRICE	9.50	
TOTAL	0.00		QUITCLAIMED TO PACIFIC CREST CEMETERY CO	-9.50	
PALOS VERDES WATER CO	999.00		TOTAL		0.00
SOLD TO CALIFORNIA WATER SERVICE CO	-999.00		SEABACK, ALFRED D AND RUTH	3.50	
TOTAL	0.00		SOLD TO LESLIE R FLESH AND OR	-3.50	
PARK WATER CO	160.00		PASTERNAK, ET AL		
SOLD TO SOUTHERN CALIFORNIA WATER	-160.00		TOTAL		0.00
TOTAL	0.00		SEPULVEDA, LOUIS M	0.70	
PARKE, ZORAIDA	1.80		ACQUIRED BY RUFFNER CORP	-0.70	
SOLD TO H L PERRY	-1.80		TOTAL		0.00
TOTAL	0.00		SHEETS, ESTHER M		
PASCHKE, WILLIAM JOSEPH	0.02		(FORMERLY CLYDE L SHEETS)		
ABANDONED WATER RIGHT	-0.02		(SEE DENNIS, ESTHER M SHEETS)		
TOTAL	0.00		SHELL OIL CO	4,516.00	
PERRY, H L			SUCCESSOR TO LAGERLOF, STANLEY C	3.50	
SUCCESSOR TO ZORAIDA PARKE	1.80		SOLD IN PART TO UNION OIL CO OF CAL	-1,974.00	
SOLD TO HARRY C JENKINS	-1.80		SOLD IN PART TO UNION OIL CO OF CAL	-1,526.00	
TOTAL	0.00		TOTAL		1,019.50
PHILLIPS 66 COMPANY			SHELL OIL PRODUCTS US		
(FORMERLY CONOCOPHILLIPS COMPANY)	6,170.00		SUCCESSOR TO EQUILON ENTERPRISES, LLC	3,432.00	
TOTAL	6,170.00		SOLD TO TESORO REFINING AND MARKETING	-3,432.00	
PHILLIPS PETROLEUM CO			COMPANY		
(FORMERLY TIDEWATER OIL CO)	167.00		TOTAL		0.00
SOLD TO GATX TANK STORAGE TERM CORP	-167.00		SHINODA BROTHERS, INC		
TOTAL	0.00		SECOND WEST COAST BASIN JUDGMENT	22.50	
POTHOS CORP			SOLD TO GARRETT CORP, THE	-22.50	
SUCCESSOR TO INOSE ET AL	5.40		TOTAL		0.00
SOLD TO EVERGREEN AMERICA CORP	-5.40		SMITH, A H,(SAM SURBER AND FRED A SMITH)	9.70	
TOTAL	0.00		SOLD IN PART TO STATE OF CALIFORNIA	-2.60	
REHOR, JOSEPHINE P	2.20		SOLD IN PART TO GRAND LAND CO	-5.70	
TOTAL	2.20		SOLD IN PART TO L A CO FLOOD CONTROL DISTRICT	-1.40	
REIFSNYDER, JEANETTE R			TOTAL		0.00
(NOW KNOWN AS JEANNETTE R HEYDENBECK)			SOCONY MOBIL OIL CO		
RHODIA, INC			(SEE MOBIL OIL CO)		
(NOW KNOWN AS SOLVAY USA INC.)			SOLVAY USA INC.		
SUCCESSOR TO RHONE-POULENC INC			(NOW KNOWN AS ECO SERVICES OPERATIONS LLC)	0.00	
RHONE-POULENE BASIC CHEMICALS CO			SOUTHERN CALIFORNIA EDISON CO	10.40	
SUCCESSOR TO STAUFFER CHEMICAL CO	521.00		SUCCESSOR TO ASSOCIATED SOUTHERN	46.70	
SOLD TO RHONE-POULENE INC	-521.00		INVESTMENT CO		
TOTAL	0.00		TOTAL		57.10
RHONE-POULENC INC			SOUTHERN CALIFORNIA WATER CO	6,265.30	
SUCCESSOR TO RHONE-POULENC, BASIC	521.00		SUCCESSOR TO EWING, CARMELITA	91.30	
CHEMICALS CO			ROSECRANS		
SOLD TO RHODIA, INC	-521.00		SUCCESSOR TO LOS ANGELES COUNTY	551.00	
TOTAL	0.00		WATERWORKS DIST NO 22		
RICHFIELD OIL CORP			SUCCESSOR TO PARK WATER CO	160.00	
(NOW KNOWN AS ATLANTIC RICHFIELD CO)			SUCCESSOR TO RYAN AERONAUTICAL CO	20.20	
ROBINSON, B, AND ASSOCIATES			SUCCESSOR TO SOUTHERN PACIFIC CO	166.00	
SUCCESSOR TO JAMES K LAWLER	3.10		SUCCESSOR IN PART TO OWEN W CURTIS	3.44	
SOLD IN PART TO HARRIS TUBE, INC	-0.70		SUCCESSOR IN PART TO B ROBINSON AND	2.40	
SOLD IN PART TO SOUTHERN CALIFORNIA	-2.40		ASSOCIATES		
WATER CO			SUCCESSOR TO WESTERN WATER SERVICE	242.60	
TOTAL	0.00		COMPANY		
ROCKWELL, MICHAEL L			NAME CHANGE TO GOLDEN STATE WATER	-7,502.24	
SUCCESSOR TO BANK OF AMERICA NATIONAL	0.10		COMPANY		
TRUST AND SAVINGS ASSOCIATION			TOTAL		0.00
(TRUST B 1-51)			SOUTHERN PACIFIC CO	166.00	
SOLD TO LITTLE, WILLIAM	-0.10		SOLD TO SO CALIFORNIA WATER CO	-166.00	
TOTAL	0.00		TOTAL		0.00
RODRIGUEZ, FLAVIO	6.10		SOUTHERN WESTERN PORTLAND CEMENT COMPANY	15.00	
SOLD TO STATE OF CALIFORNIA	-4.00		SOLD TO CHANDLERS PALOS VERDES AND	-15.00	
DISCLAIMED WATER RIGHT	-2.10		GRAVEL CORP		
TOTAL	0.00		TOTAL		0.00
ROMAN CATHOLIC ARCHBISHOP OF LOS ANGELES (HOLY	72.30		SOUTHWEST STEEL ROLLING MILLS		
CROSS CEMETERY)					

SUCCESSOR TO MARTIN BROTHERS BOX CO, INC	3.40		TOTAL		5,638.86
SOLD TO COAST FOREST PRODUCTS	-3.40		TORRANCE REFINING COMPANY LLC		
TOTAL	0.00		SUCCESSOR TO EXXONMOBIL OIL CORP, EXXON MOBIL OIL CORPORATION SUCCESSOR TO MOBIL OIL CORP (FORMERLY SOCONY MOBIL OIL CORP)	2,570.00	
SPANISH AMERICAN INSTITUTE	44.40		SUCCESSOR TO SUPERIOR OIL CO	26.40	
SOLD TO FUTURA INDUSTRIES, INC	-44.40		TOTAL		2,596.40
TOTAL	0.00		TORRANCE SAND AND GRAVEL CORP		
SPARKLETTS DRINKING WATER CORP			SUCCESSOR TO WESTON INVESTMENT CO	184.00	
SUCCESSOR TO ANDERSON, REMBERT C, ET AL	80.50		SOLD TO CHANDLERS PALOS VERDES	-184.00	
SUCCESSOR TO CALIFORNIA, STATE OF	26.10		SAND AND GRAVEL CORP		
SUCCESSOR TO KAHLERT, ET AL	18.90		TOTAL		0.00
SUCCESSOR TO KURTZ, GLADYS	3.50		TORRANCE UNIFIED SCHOOL DISTRICT		
SUCCESSOR TO MCCANDLESS, JAMES	6.70		SUCCESSOR TO HILARIO S AND EMMA ALWAG	59.40	
SUCCESSOR TO WECHSLER, B A	3.10		SOLD TO CITY OF TORRANCE	-59.40	
SUCCESSOR IN PART TO KELLY PIPE CO	13.80		TOTAL		0.00
SOLD TO WESTERN WATER CO	-152.60		TOSCO CORP		
TOTAL	0.00		SUCCESSOR TO UNION OIL CO OF CALIF	6,170.00	
STANDARD OIL CO OF CALIFORNIA (NOW KNOWN AS CHEVRON U S A, INC)			MERGED INTO CONOCOPHILLIS COMPANY	6,170.00	
STAUFFER CHEMICAL CO	521.00		TOTAL		0.00
SOLD TO RHONE-POULENC BASIC CHEMICALS CO	-521.00		TUNE, MATES, ET AL		
TOTAL	0.00		SUCCESSOR TO JOSEPHINE WATKINSON	3.10	
SUNRISE GROWERS, INC			SOLD TO B A WECHSLER	-3.10	
SUCCESSOR TO AMERICAN PLANT GROWERS INC	10.00		TOTAL		0.00
SOLD TO AMERICAN PLANT GROWERS, INC	-10.00		UNION NURSERY, INC		
TOTAL	0.00		SECOND WEST COAST BASIN JUDGMENT	4.70	
SUPERIOR OIL CO			SOLD TO CENTURY BUILDERS	-4.70	
SUBJECT TO LONG TERM LEASE FROM ISABELA J GRANZ	26.40		TOTAL		0.00
SOLD TO MOBIL OIL CORP	-26.40		UNION OIL CO OF CALIFORNIA	2,670.00	
TOTAL	0.00		SUCCESSOR IN PART TO SHELL OIL CO	1,974.00	
SWICK, PEGGY	5.50		SUCCESSOR IN PART TO SHELL OIL CO	1,526.00	
SOLD TO HILARIO AND EMMA ALWAG	-5.50		SOLD TO TOSCO CORP	-6,170.00	
TOTAL	0.00		TOTAL		0.00
TESORO REFINING AND MARKETING COMPANY			UNITED CALIFORNIA BANK		
SUCCESSOR TO SHELL OIL PRODUCTS US (NOW KNOWN AS TESORO REFINING & MARKETING COMPANY LLC)			SUCCESSOR TO BALLMAN, ROSEMARY N	7.00	
TESORO REFINING & MARKETING COMPANY LLC (FORMERLY TESORO REFINING AND MARKETING COMPANY)	3,432.00		SOLD TO ABC NURSERY, INC	-2.00	
SUCCESSOR TO ATLANTIC RICHFIELD COMPANY (6-13-2013)	5,309.00		SOLD TO NOZAKI, SUMIKICHI	-5.00	
TOTAL	8,741.00		TOTAL		0.00
TEXACO, INC (NOW KNOWN AS TEXACO REFINING AND MARKETING, INC)			UNITED STATES NAVY DEPARTMENT	1.70	
TEXACO REFINING AND MARKETING, INC (FORMERLY: TEXACO, INC)	3,432.00		LONG TERM LEASE TO MCDONNELL DOUGLAS CORP PER JUDGEMENT	-1.70	
SOLD TO EQUILON ENTERPRISES, LLC	-3,432.00		TOTAL		0.00
TOTAL	0.00		UNITED STATES STEEL CORP	1,791.00	
THAXTER, RALPH AND LOIS A LENOIR	3.50		SOLD TO TORRANCE, CITY OF	-1,791.00	
SOLD TO KENICHI INOSE	-3.50		TOTAL		0.00
TOTAL	0.00		VERBURG, WILLIAM AND CLARA B	6.70	
THORPE, GREGORY			SOLD TO ABC NURSERY, INC	-6.70	
SUCCESSOR IN PART TO ESTATE OF JOHN GRANT	11.80		TOTAL		0.00
SOLD TO DOMINGUEZ WATER CORP	-11.80		VUKELICH MIKE, JR.		
TOTAL	0.00		SUCCESSOR TO AMERICAN PLANT GROWERS, INC.	10.00	
THORPE, TERRENCE			TOTAL		10.00
SUCCESSOR IN PART TO ESTATE OF JOHN GRANT	11.80		WADA, KAORU AND SATORU	12.20	
SOLD TO HILLSIDE MEMORIAL PARK	-11.80		SOLD TO PACIFIC CREST CEMETERY CO	-12.20	
TOTAL	0.00		TOTAL		0.00
TIDEWATER OIL CO (SEE PHILLIPS PETROLEUM CO)			WATKINSON, JOSEPHINE	3.10	
TITLE, SIDNEY R AND CHARLOTTE W			SOLD TO MATES TUNE, ET AL	-3.10	
SUCCESSOR TO KEITH W AND OPAL B SCHLAEGE L	13.60		TOTAL		0.00
SOLD TO ABC NURSERY, INC	-13.60		WATSON LAND CO	42.60	
TOTAL	0.00		SUCCESSOR IN PART TO DOMINGUEZ WATER CORP	37.60	
TORRANCE, CITY OF	2,519.00		TOTAL		80.20
SUCCESSOR TO BARCLAY HOLLANDER CORP	3.33		WATT INDUSTRIAL PROPERTIES		
SUCCESSOR TO BARCLAY, RICHARD AND WATT, R A	59.96		SUCCESSOR TO WILLIAM LITTLE	0.10	
SUCCESSOR TO BELVIDERE MUTUAL WATER CO	33.40		NAME CHANGE TO OCEAN INDUSTRIES	-0.10	
SUCCESSOR TO DENNIS, ESTHER M SHEETS	5.50		TOTAL		0.00
SUCCESSOR TO ALCAST FOUNDRY ET AL	7.20		WATT, R A, INC		
SUCCESSOR TO GONZALES, GABRIELA AND MARIA R	34.30		SUCCESSOR TO NED EWING, ET AL	6.50	
SUCCESSOR TO JONES, ANNA MAE	50.20		SUCCESSOR IN PART TO ISABELA J GRANZ ESTATE	13.75	
SUCCESSOR TO MONETA WATER CO	916.00		SUCCESSOR IN PART TO JOUGHIN TORRANCE RANCH	55.35	
SUCCESSOR TO MORAN, RONALD E	9.00		SOLD TO DOMINGUEZ WATER CORP	-61.85	
SUCCESSOR TO NORMANDIE PARK	136.82		SOLD TO CITY OF TORRANCE	-13.75	
SUCCESSOR TO TORRANCE UNIFIED SCHOOL DISTRICT	59.40		TOTAL		0.00
SUCCESSOR TO UNITED STATES STEEL CORP	1,791.00		WECHSLER, B A		
SUCCESSOR TO WATT, R A, INC	13.75		SUCCESSOR TO MATES TUNE, ET AL	3.10	
			SOLD TO SPARKLETTS DRINKING WATER CORP	-3.10	
			TOTAL		0.00
			WESTERN WATER CO		
			SUCCESSOR TO FLETCHER OIL AND REFINING CO	90.00	
			SUCCESSOR TO SPARKLETTS DRINKING WATER CORP	152.60	
			SOLD TO WESTERN WATER SERVICES CO	-242.60	
			TOTAL		0.00
			WESTERN WATER SERVICES CO *		
			SUCCESSOR TO WESTERN WATER CO.	242.60	
			SOLD TO SOUTHERN CALIFORNIA WATER COMPANY	-242.60	
					0.00

West Coast Basin Watermaster

WESTON INVESTMENT CO	184.00	
SOLD TO TORRANCE SAND AND GRAVEL CORP	-184.00	
TOTAL		0.00
WISEBURN SCHOOL DISTRICT	8.20	
TOTAL		8.20
WOODMAN, KATHERINE P (SEE FRED A JUNGQUIST)		
ZEIGLER, MAXWELL T	0.00	
TOTAL		0.00
GRAND TOTAL	64,468.25	64,468.25

* WESTERN WTR. SERV.CO. - PARTY WITH ZERO AR FOR THE DURATION OF LONG-TERM
LEASE AGREEMENT WITH CHEVRON (ENDED JUNE 30, 2013)

Appendix C

Parties to the Amended Judgment and Water Rights Holders
as of
June 2025

ABC Nursery, Inc

Aqua Capital Management LP

Asahi Fancy Koi, Inc.

Atlantic Richfield Company

Automation Industries, Inc.

Boeing Company (McDonnell Douglas Corporation - Merged)

CBS, Inc.

California Water Service Company

California Water Service Company (Dominguez)

California Water Service Company (Hawthorne Lease)

Carson-Harbor Village Mobile Home Park

Carson-Madrona Company

Century Builders

Chandler's Palos Verdes Sand & Gravel Company

Chevron USA, Inc

Coastline Church of Christ

Curtis, Owen W.

Delaney, Golda, Estate of

El Segundo, City of

Engelsma, Susan Trust

Evergreen America Corp.

Fujimoto, S.R., S.T. & J.K.

Gillingham, Florence R., et al.

Golden State Water Company

Hawthorne, City of

Hillside Memorial Park

Hollywood Park Land Company, LLC

Honeywell International, Inc.

Honold, Kristin Brandsma

Hughes Aircraft Company

International Plant Growers Inc.

Inglewood, City of

Inglewood Park Cemetery

Kinder Morgan Liquids Terminals, LLC

Leuzinger, Emma L. Estate of

Lockheed Martin Corporation

Lomita, City of Water System

Long Beach, City of

Lopes, Frank

Los Angeles, City of

Los Angeles County Parks & Recreation

Los Angeles County Sanitation (WWRF)

Loyola Marymount University

Manhattan Beach, City of

Mayflower Nurseries

Torrance Refining Company LLC

Montrose Chemical Corporation

Mori, Roy H. and Kenji

Myron Z. Chlavin & Nettie Desser Trust & JHD Pr.

Northrop Corporation

Nozaki, Sumikichi

Ocean Industries

Pacific Crest Cemetery Company

Palos Verdes Begonia Farm

Phillips 66 Company

Rehor, Josephine P.

Eco Services Operation, LLC

Rolling Hills Country Club

Rolling Hills Vista

Roman Catholic Archbishop of Los Angeles

SCI California Funeral Services Inc. (New Party)

Shell Oil Company

Southern California Edison Company

Tesoro Refining and Marketing Company

Torrance, City of

Vukelich, Mike Jr.

Water Replenishment District

Watson Land Company

West Basin Municipal Water District

Western Water Service Company

Wiseburn School District

Zeigler, Maxwell T.

Water Rights Holders are in **bold**.

Appendix D

Erratum of West Coast Basin Watermaster Annual Report
for July 1, 2023- June 30, 2024

Report Page No.	Original Text [Error Type]	Correction
19	<p><u>Table 7</u> There were no over-extractions in 2023-2024 AY [Bookkeeping Error]</p>	<p><u>Table 7</u> Eco Services Operations Pumping: 670.21 Max Allowable Extraction: 625.50 Violation of Judgment? No</p>