

# KEY TERMS

## AY

Administrative Year is equivalent to a Fiscal Year (July 1- June 30).

## APA

Allowed Pumping Allocation represents the maximum amount of groundwater (in acre-feet) that a Party is authorized to extract in an AY and is 80% of a Party's total water right.

*There is a total of 217,367 acre-feet of APA in the Central Basin.*

## CARRYOVER CONVERSION

One-year Carryover that is converted to stored water. A Replenishment Assessment (RA) is paid at time of conversion.

*Note: In the Central Basin, you must convert OYC prior to converting any current year carryover.*

## CURRENT ADMIN YEAR CARRYOVER

Water rights that are not extracted during the current AY and will not be extracted or leased out to another Party prior to the end of the AY.

## LEASES WITH FLEX

Transfer of the pumping right and associated carryover provision to the lessee (carryover rights allow unused water from one year to be carried over for use in the subsequent year).

## LEASES WITHOUT FLEX

Transfer of only the pumping right to the lessee (carryover provisions do not apply).

## ONE-YEAR CARRYOVER

You can carryover a maximum of (whichever is greater):

- 1) 60% of (APA +/- Leases w/flex)
- OR**
- 2) 20 AF
- ▶ minus storage
- but not less than**
- 20% of (APA +/- Leases w/ flex)

## STORAGE

Water rights that have been converted to storage through the carryover conversion process for use in future years.



## HELPFUL LINKS:

Water Rights Calculator  
[www.rights.wrd.org](http://www.rights.wrd.org)

Forms, Reports, Information etc.  
[www.wrd.org/administrative-body](http://www.wrd.org/administrative-body)

## HOW TO REACH US?

[watermaster@wrdd.org](mailto:watermaster@wrdd.org)  
(562) 275-4300



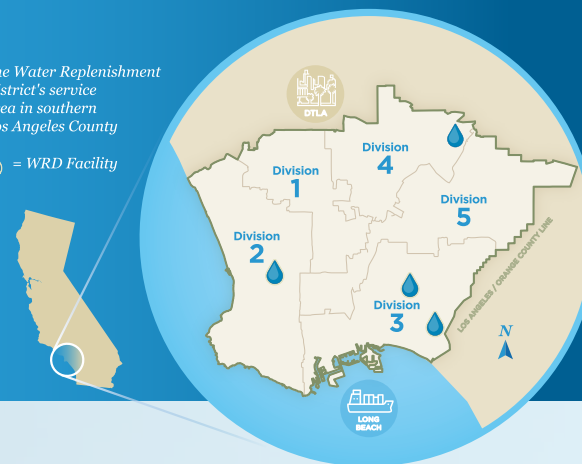
# WATER RIGHTS ACCOUNTING WORKSHEET GUIDE

*WRD manages and protects two of the most utilized urban groundwater basins in the nation. Groundwater from these basins provides nearly 50% of the total water supply for the four million residents in WRD's 43-city service area which covers 420 square miles in southern Los Angeles County. WRD ensures that a reliable and locally sustainable supply of high-quality groundwater is available through replenishment with recycled water and stormwater capture.*



The Water Replenishment District's service area in southern Los Angeles County

💧 = WRD Facility



### BOARD OF DIRECTORS



## CENTRAL BASIN WATERMASTER

This brochure provides guidance on completing the water rights worksheet found:

**[WWW.WRD.ORG/ADMINISTRATIVE-BODY](http://WWW.WRD.ORG/ADMINISTRATIVE-BODY)**

# INSTRUCTIONS:

**ALL WHITE CELLS SHOULD BE COMPLETED; IF NOT APPLICABLE, ENTER 0 (ZERO). THE FIELDS SHADED IN GREEN WILL AUTO-POPULATE.**

Party with Allowed Pumping Allocation (APA)	Allowed Pumping Allocation (APA)	Net Carryover From Previous Year			Leases w/flex	Leases w/o flex
		One-Year Carryover	Drought Carryover			
			1977	1991		
A (Party Name)	B	C	D	E	F	G

**B. Allowed Pumping Allocation (APA)** - Every July 1st, start with total APA.

**C. One-Year Carryover (OYC)** - rights carried over from the prior AY.

**D & E. Drought Carryover (DCO)** - A special one-time allocation from a drought declaration in 1977 and 1991. The balance carries over year to year unless pumper has requested to utilize.

**F. Leases With Flex** - Transfers the pumping right and the carryover provision to the lessee. If you have leases or plan to lease rights, enter a **negative** number for leasing **out**, and a **positive** number when leasing **in**.

**G. Leases Without Flex** - Transfers the pumping right only. If you have leases or plan to lease rights, enter a **negative** number for leasing **out**, and a **positive** number when leasing **in**.

Storage	Increased Extraction	Total Rights (sum of B through I)
H	I	J

**H. Storage** - Enter your storage balance from the start of the AY **plus** any additions (carryover conversion).

**I. Increased Extraction** - Per the Judgment certain purveyors (Golden State, Cal Water, LADWP) can transfer unused rights to increase their extraction from the West Coast Basin (up to 5,000 af). Enter this number as a **positive**.

**J. Total Rights** - Sum of rights, columns B through I. (cell auto-populates)

# WATER RIGHTS ACCOUNTING WORKSHEET GUIDE

Total Extraction Right	Storage Pumped	Other Rights Pumped	Net Rights Balance (J-L-M)	Current Admin-Year Carryover into Storage	Storage Balance (H-L+O)
K	L	M	N	O	P

**K. Total Extraction Right** - The maximum amount of groundwater that can be extracted. (APA +/- leases)+ OYC+stored water, but cannot exceed 140% of (APA +/- leases) unless pre-authorized by the Panel. (cell auto-populates)

**L. Storage Pumped** - Enter storage withdrawals (if any). Groundwater that is extracted and deducted from the storage account (the RA is pre-paid at the time of carryover conversion).

**M. Other Rights Pumped** - Groundwater that is extracted to the nearest .01 acre-foot. A replenishment assessment (RA) is charged per acre-foot.

**N. Net Rights Balance** - Total rights **minus** storage withdrawals and other rights pumped (production). (cell auto-populates)

**O. Current Admin-Year Carryover into Storage** - Once OYC is exhausted (converted to storage, or pumped), a pumper may opt to convert current admin-year carryover to reduce the amount of unused rights. Enter the amount of current year carryover you plan to convert to storage as a **positive** number (if any).

**P. Storage Balance** - Start of AY Storage Balance **plus** any carryover conversion and **minus** storage withdrawals. (cell auto-populates)



Allowable Carryover (CO) into Next Year					
Drought Carryover		Balance of (N-P-Q-R)	Cap on One-Year Carryover	One-Year Carryover Allowed	Total Carryover into Next Year (Q+R+U)
1977	1991				
Q	R	S	T	U	V

**Q & R. Drought Carryover (DCO)** - A special one-time allocation from a drought declaration in 1977 and 1991. The balance carries over year to year unless pumper requests to utilize. Same numbers as cell D & E.

**S. Balance of Rights** - Net Rights Balance (cell N) **minus** storage balance and DCO. (cell auto-populates)

**T. Cap on One-Year Carryover** - You can carryover a maximum of (whichever is greater):

1) 60% of (APA +/- Leases w/flex)

**OR**

2) 20 AF

► **minus storage**

**but not less than**

20% of (APA +/- Leases w/ flex)

(cell auto-populates)

**U. One-Year Carryover Allowed** - The cap on carryover in cell T cannot exceed your balance of rights in cell S. (cell auto-populates)

**V. Total Carryover into Next Year** - DCO + OYC Allowed (cell auto-populates)

**W. Unused Rights for the Year** - Rights that were not pumped, leased, stored, or sold, cannot be carried into the subsequent year. (cell auto-populates)

Unused Rights for the Year (S-U)
W

*Note: All water right transaction requests (leases, sales, carryover conversion) are due by August 15th following the end of the AY to count in that AY.*