

# KEY TERMS

## AY

Administrative Year, equivalent to Fiscal Year (July 1 - June 30).

## ADJUDICATED RIGHT (AR)

the right of a Party to produce groundwater in a quantity greater than 0 (zero) according to the Amended Judgment.

*There is a total of 64,468.25 acre-feet of AR in the West Coast Basin*

## CARRYOVER

In the West Coast Basin, 100% of unused water rights can be carried over into the subsequent year.

You can carryover a maximum of (whichever is greater):

- 1) 100% of (AR +/- leases w/flex - increased extraction) less storage
- OR**
- 2) 20% of (AR +/- leases w/ flex)

## CARRYOVER CONVERSION

Carryover converted into storage for future use. A Replenishment Assessment (RA) is paid upon conversion of this carryover.

## LEASES WITH FLEX

Transfer of the pumping right and associated carryover provision to the lessee (carryover rights allow unused water from one year to be carried over for use in the subsequent year).

## LEASES WITHOUT FLEX

Transfer of the pumping right only to the lessee (carryover provision does not apply).

## STORAGE

Water rights that have been converted to storage through the carryover conversion process.

## HELPFUL LINKS:

Water Rights Calculator  
[www.rights.wrd.org](http://www.rights.wrd.org)

Forms, Reports, Information etc.  
[www.wrd.org/administrative-body](http://www.wrd.org/administrative-body)

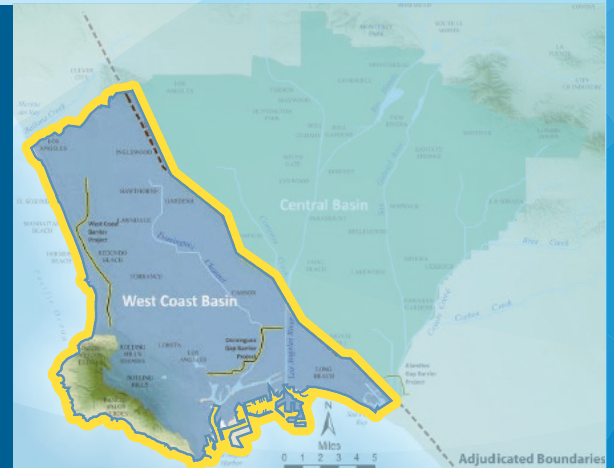
## HOW TO REACH US?

[watermaster@wrdd.org](mailto:watermaster@wrdd.org)  
(562) 275-4300



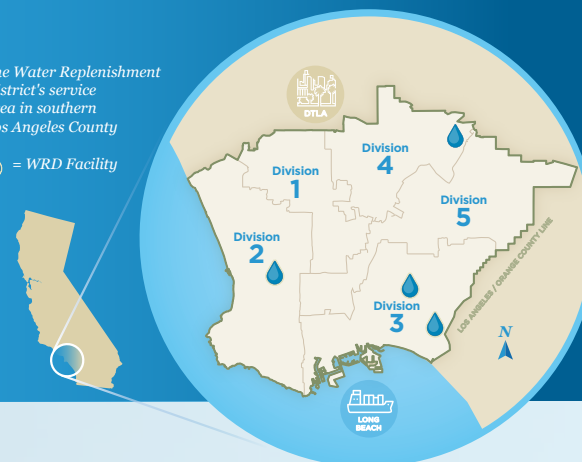
# WATER RIGHTS ACCOUNTING WORKSHEET GUIDE

*WRD manages and protects two of the most utilized urban groundwater basins in the nation. Groundwater from these basins provides nearly 50% of the total water supply for the four million residents in WRD's 43-city service area which covers 420 square miles in southern Los Angeles County. WRD ensures that a reliable and locally sustainable supply of high-quality groundwater is available through replenishment with recycled water and stormwater capture.*



The Water Replenishment District's service area in southern Los Angeles County

= WRD Facility



### BOARD OF DIRECTORS



## WEST COAST BASIN WATERMASTER

This brochure provides guidance on completing the water rights worksheet found:

**[WWW.WRD.ORG/ADMINISTRATIVE-BODY](http://WWW.WRD.ORG/ADMINISTRATIVE-BODY)**

# INSTRUCTIONS:

**ALL WHITE CELLS SHOULD BE COMPLETED; IF NOT APPLICABLE, ENTER 0 (ZERO). ALL BLUE SHADED CELLS AUTO-POPULATE.**

Party with Adjudicated Right (AR)	Adjudicated Right (AR)	Net Carryover From Previous Year		Leases w/flex	Leases w/o flex
		Carryover	Drought Carryover		
A (Party Name)	B	C	D/E	F	G

**B. Adjudicated Right (AR)** - Every July 1st, start with total AR.

**C. Carryover** - Rights carried over from the prior AY.

**D/E. Drought Carryover (DCO)** - A special one-time allocation from a drought declaration in 1977. The balance carries over year to year unless Pumper has requested to utilize.

**F. Leases With Flex** - Transfers the pumping right and the carryover provision to the lessee. If you have leases or plan to lease rights, enter a **negative** number for leasing **out**, and a **positive** number when leasing **in**.

**G. Leases Without Flex** - Transfers the pumping right only. If you have leases or plan to lease rights, enter a **negative** number for leasing **out**, and a **positive** number when leasing **in**.

Storage	Increased Extraction	Total Rights (sum of B through I)
H	I	J

**H. Storage Balance** - Enter your storage balance from the start of the AY **plus** any additions (carryover conversion).

**I. Increased Extraction** - Per the Judgment, certain purveyors (Golden State, Cal Water, LADWP) can transfer unused rights to increase their extraction to the Central Basin (up to 5,000 af). Enter the number as a **negative**.

**J. Total Rights** - Sum of rights, columns B through I. (cell auto-populates)

# WATER RIGHTS ACCOUNTING WORKSHEET GUIDE

Total Extraction Right	Storage Pumped	Other Rights Pumped	Net Rights Balance (J-L-M)	Storage Balance
K	L	M	N	O

**K. Total Extraction Right** - The yearly extraction = AR +/- Leases + carryover + storage, provided that the max yearly extraction does not exceed 120% of (AR +/- leases) unless pre-authorized by the storage panel. (cell auto-populates)

**L. Storage Pumped** - Enter storage withdrawals (if any). Groundwater that is extracted and deducted from the storage account (the RA is pre-paid at the time of carryover conversion).

**M. Other Rights Pumped** - Groundwater that is extracted in a quantity greater than 0 (zero). A replenishment assessment (RA) is charged per acre-foot.

**N. Net Rights Balance** - The total rights (cell J) minus any storage withdrawals and other rights pumped (production). (cell auto-populates)

**O. Storage Balance** - Start of AY Storage Balance **plus** any carryover conversion and **minus** storage withdrawals. (cell auto-populates)



Allowable Carryover (CO) Into Next Year				Total Carryover into Next Year (P+T)
Drought Carryover	Balance of (N-O-P)	Cap on Carryover	Carryover Allowed	
P/Q	R	S	T	U

**P/Q. Drought Carryover (DCO)** - A special one-time allocation from a drought declaration in 1977. The balance carries over year to year unless pumper requests to use it. Same as cells D & E.

**R. Balance of Rights** - Net Rights Balance (cell N) **minus** storage balance and DCO. (cell auto-populates)

**S. Cap on Carryover** - You can carryover a maximum of (whichever is greater):

1) 100% of (AR +/- leases w/flex - increased extraction) less storage

**OR**

2) 20% of (AR +/- leases w/ flex)

(cell auto-populates)

**T. Carryover Allowed** - The cap on carryover in cell S cannot exceed your balance of rights in cell R. (cell auto-populates)

**U. Total Carryover into Next Year** - DCO + Carryover Allowed (cell auto-populates)

**V. Unused Rights for the Year** -

Rights that were not pumped, leased, stored, or sold, cannot be carried into the subsequent year. (cell auto-populates)

Unused Rights for the Year (R-T)
V

*Note: All water right transaction requests (leases, sales, carryover conversion) are due by August 15th following the end of the AY to count in that AY.*