

This report is available at www.wrd.org

Printed copies are available.

Send requests to:

watermaster@wrld.org

WATERMASTER SERVICE

IN THE WEST COAST BASIN
LOS ANGELES COUNTY

July 1, 2016 - June 30, 2017

November 2017

**WEST COAST BASIN
WATER RIGHTS PANEL**



Prepared by

Water Replenishment District of Southern California

West Coast Basin Administrative Body

for the

West Coast Basin Watermaster Water Rights Panel

Adopted on

November 7, 2017

Contents

Summary of Pertinent Data	1
Introduction	2
Water Use	
A. Adjudicated Rights Extractions by Parties	3
B. Groundwater Storage Activity by Parties	3
C. Excess Production	3
D. Extractions of Contaminated Groundwater	4
E. Extractions by Non-Parties	4
F. Adjudicated Rights Transfers	4
G. Exchange Pool	4
H. Status of Extraction Wells	5
I. Meter Testing Program	5
Water Supply	
A. Precipitation	6
B. Groundwater Recharge	6
C. In-Lieu Replenishment	6
D. Imported Water	6
E. Quality of Imported Water	7
F. Recycled Water	7
G. Total Water Use	7
H. Exported Water	7
I. Seawater Intrusion Barrier Projects	7
J. Groundwater Levels	8
Watermaster Administrative Costs and Budget	9

Tables

1	Water Rights Accounting	10
2	Storage Accounting	12
3	Water Put Into Storage	13
4	Water Extracted from Storage	13
5	Storage Transfers	13
6	Historic Storage	13
7	Overextractions	14
8	Non-Consumptive Water Use Permits	14
9	Extractions by Non-Parties	14
10	Adjudicated Rights Transfers	15
11	Sales and Transfers	16
12	Exchange Pool	17
13	Extraction Wells Completed	17
14	Extraction Wells Destroyed	17
15	Replenishment Operations	17
16	WRD In-Lieu Recharge	18
17	Imported Water Use	18
18	Recycled Water Use	19
19	Seawater Intrusion Barrier Project Operations	19
20	Apportionment of Budget Among Parties	20

Figures

1	West Coast Basin (showing groundwater production)	22
2	Monthly Water Production (includes non-consumptive use)	23
3	West Coast Basin (showing key wells and facilities)	24
4	Monthly Rainfall	25
5	Total Water Use	26
6	Water Level Hydrographs	27

Appendixes

A	Groundwater Extractions	28
B	Succession of Adjudicated Rights, June 2017	38
C	Parties to the Amended Judgment	46

West Coast Basin Administrative Body

Water Replenishment District of
Southern California

President

Rob Katherman

Division 2

Vice-President

John D.S. Allen

Division 3

Secretary

Sergio Calderon

Division 4

Treasurer

Albert Robles

Division 5

Director

Willard H. Murray, Jr.

Division 1

Staff

Ted Johnson

Esther Valle Rojas

Tiffani Fong

Greg Osti

Josi Jenneskens

West Coast Basin Water Rights Panel

Chair

Rob Beste

City of Torrance

Vice-Chair

Katherine Nutting

Golden State Water Company

Treasurer

Stephanie Katsouleas

City of Manhattan Beach

Ron Sorensen

California Water Service Company

Denis Kurt

Tesoro Refining and Marketing Company

Summary of Pertinent Data

Item	Administrative Year 2015 - 2016	Administrative Year 2016 - 2017
Parties to judgment	60	60
Active pumpers	24	21
Active nonparties	0	0
Adjudicated Rights (acre-feet)	64,468.25	64,468.25
Rainfall (inches)	7.71	18.27
Injection at barrier projects (acre-feet)	20,991	20,842
Watermaster expenses, total	\$172,896 ¹	\$172,896
Watermaster expenses, per Adjudicated Rights	\$2.68 ¹	\$2.68
Adjudicated Rights Extractions (acre-feet) ²	31,635	26,805
Recycled water use by parties (acre-feet)	21,326	23,317
Imported water use by parties (acre-feet)	136,975	139,075
Exported water use by parties (acre-feet)	0	0
Total water use by parties (acre-feet)	189,936	189,197

¹ Budget reduction for 2015-2016 due to implementation of the new Watermaster structure under the terms of the 2014 amendment to the West Coast Basin Judgment.

² Excludes extractions by parties with non-consumptive water use permits and by non-parties.

Introduction

The West Coast Basin (Basin) underlies 160 square miles in the southwestern part of the coastal plain of Los Angeles County. Figure 1 shows the location and adjudicated boundaries of the West Coast Basin. The Basin is bounded on the west by the Santa Monica Bay, on the north by the Ballona Escarpment, on the east by the Newport-Inglewood Uplift, and on the south by the San Pedro Bay and the Palos Verdes Hills. Twenty incorporated cities and several unincorporated areas overlie the Basin. An essential portion of the water needed by the residents and industries in the area overlying the Basin is pumped directly from the groundwater in storage. In 1945, when intrusion of seawater caused by declining water levels threatened the quality of the groundwater supply, legal action was initiated to halt the overdraft and prevent further damage to the Basin. In 1955, the Superior Court of Los Angeles County (Court) appointed the Division of Water Resources as the Watermaster to administer an Interim Agreement, and in 1961, the Court retained the Department of Water Resources (DWR) as the Watermaster of the final West Coast Basin Judgment (Judgment).

On December 5, 2014, the West Coast Basin Judgment was amended (Amended Judgment). The Amended Judgment established a new Watermaster structure, which replaces the DWR. The new Watermaster structure includes an Administrative Body, a Water Rights Panel, and a Storage Panel. The Administrative Body administers the Watermaster accounting and reporting functions. The Water Replenishment District of Southern California (WRD) was appointed by the court to fulfill this role. The Water Rights Panel enforces issues related to the pumping rights within the adjudications and is composed of five West Coast Basin adjudicated rights holders. In addition, the Storage Panel is comprised of the Water Rights Panel and the WRD Board of Directors, which together approve certain groundwater storage efforts.

The Watermaster assists the Court in the administration and enforcement of the provisions of the Judgment. Among other duties, the Watermaster monitors groundwater levels and extractions and reports significant water-related events.

The 2016-2017 Watermaster Report is developed by the Administrative Body and adopted by the Water Rights Panel. This report summarizes information on groundwater extractions, storage accounts, use of imported water and recycled water. Replenishment operations and the budget and finances of Watermaster during the 2016-2017 administrative year.

Water Use

A. Adjudicated Extractions by Parties

The Judgment limits the amount of groundwater each party may extract annually from the Basin. This limit, referred to as the “adjudicated right” is shown in Table 1 for each party. A participant of the Exchange Pool, which provides the opportunity to purchase additional water rights if a party’s water requirement exceeds water supplies, may pump the amount released to it in addition to its adjudicated right. Parties are required to report water extractions to the Administrative Body each month. Appendix A lists, by party, the volume of groundwater extracted each month from each active well in the Basin. Figure 1 describes the variation of groundwater production by three distinct production classifications, including less than 500 acre-feet per year (afy), 500 to 2,000 afy, and more than 2,000 afy, during 2016-2017. In addition, Figure 2 describes the amount of pumping by month (including non-consumptive use) for 2016-2017.

To provide flexibility in regards to groundwater extractions, the Judgment contains provisions, such as “Carryover,” which allows each party to carry over into the succeeding administrative year its unused adjudicated rights. However, the amount of available carryover is reduced by the amount of Stored Water held by the party. Yet, such reduction will not cause the amount of carryover to be less than 20% of a party’s total adjudicated rights. This type of provision is necessary to meet unforeseen water demands.

B. Groundwater Storage Activity by Parties

The Amended Judgment permits parties holding water rights to store water in the West Coast Basin for later recovery. During 2016-2017, 4,766 acre-feet of water was put into storage and none was extracted or transferred. All of this water was put into storage pursuant to Section V.4.B of Judgment, which allows parties to convert carryover to storage upon payment of the Replenishment Assessment to WRD. Tables 2 through 5 provide information on water placed into storage, extracted from storage and transferred storage. Furthermore, Table 6 describes historic storage since 2014. The Judgment provides for the transfer of stored water between parties. There were no transfers of stored water during the 2016-2017 administrative year.

C. Excess Production

The Judgment provides for overextractions under certain conditions. A party may over extract by no more than two acre-feet or 10% of a Party’s adjudicated right, whichever is greater. When a party overextracts in violation of the Judgment, Watermaster notifies the party to resolve the overextraction issue. Under certain circumstances, a party may overextract in a greater amount; however, prior approval must be obtained from the Watermaster – Water Rights Panel. The Excess Production must be made up in the following administrative year unless the Court determines this requirement would create an unreasonable hardship for the party.

Table 7 lists the names of parties that have over extracted groundwater during the year and shows the amount of overextraction by each party. During 2016-2017, three parties had a combined excess production of 160.18 acre-feet.

D. Extractions of Contaminated Groundwater

Any party may petition the WRD for a Non-consumptive Water Use Permit (NCWUP) as part of a project to remedy or ameliorate groundwater contamination. If the petition is granted, the party may extract the groundwater without the production counting against its production rights, so long as conditions of the Judgement are met. Table 8 lists current NCWUPs issued by WRD and the amounts of groundwater extracted under those permits. A total of 567.10 acre-feet of water was extracted under NCWUPs in 2016-2017.

E. Extractions by Non-Parties

Table 9 shows extractions by non-parties, if any, and Appendix A reports these extractions by well and month. In the 2016-2017 Administrative Year there were no extractions by non-parties reported.

F. Adjudicated Rights Transfers

Each year, Adjudicated Rights are transferred between parties through sales and leases. Appendix B shows the succession of Adjudicated Rights in the West Coast Basin as of June 30, 2017.

Table 10 shows transfers of Adjudicated Rights through leases. During 2016-2017 there were six leases that totaled 4,136.50 acre-feet. In addition, Table 11 shows transfers of Adjudicated Rights through sales. There was one sale totaling 11.80 acre-feet during 2016-2017. Each party's adjudicated right, as of June 30, 2017, is also listed in Table 1.

When land is sold on which a water right has been developed, the Watermaster must receive a copy of the sale document if the water right is also sold. The water right does not automatically pass to the new land owner unless the sale document specifies that the water right was sold with the land. For the proper accounting of the water right, the sale document must specify the exact amount of water rights sold.

In transferring water rights, parties must specify (1) the type of right (i.e., adjudicated rights, normal carryover, or drought carryover), (2) the amount of right to the nearest 0.01 acre-foot, and (3) the period of the lease, if applicable. Moreover, all leases must be made on an administrative year basis and must be executed by the parties and received by Watermaster Administrative Body by August 15 of the year in which the lease is effective.

G. Exchange Pool

The Judgment authorizes an Exchange Pool to provide additional water rights to parties without sufficient water. If a party's estimated water requirement for the following fiscal year exceeds its

total available water supply, that party may purchase additional water from the Exchange Pool. There were no requests for Exchange Pool water during 2016-2017 Administrative Year (Table 12).

H. Status of Extraction Wells

In the Basin there are 60 reported active extraction wells as of June 30, 2017. The locations of the active extraction wells are shown on Figure 1 by three distinct production classifications. Table 13 shows one new completed extraction well in the 2016-2017 Administrative Year. Table 14 shows that no extraction wells were reported as destroyed.

I. Meter Testing Program

Accurate measurement of groundwater extractions is essential for the successful management of groundwater in the Basin. Therefore, Watermaster requires an operative water meter to be installed at each extraction well. It is the responsibility of each party to ensure that its meter and test facilities are installed properly and are maintained in good working condition. It is the goal of Watermaster to test the water meter at each active extraction well at least once every two years or when a party requests a meter calibration. Watermaster tests meters by volumetric or pitot tube comparisons. Watermaster notifies a party that it must repair or replace its meter when the meter registers beyond five percent accuracy. Watermaster calculates the monthly water production for each well using the meter readings and Unit of Measure Code reported for the well that month. If the registration accuracy of the meter deviates by as much as five percent, the calculated well production could be subject to revision.

The West Coast Basin Water Rights Panel is responsible for the meter testing program. For the 2016-2017 Administrative Year, they report that no meters were tested, but are in discussions with the DWR to perform future testing.

Water Supply

A. Precipitation

During 2016-2017, 16.33 inches of precipitation were measured at Los Angeles International Airport, 19.98 inches at Long Beach Airport, and 18.49 inches at Torrance Airport. Figure 3 shows the location of the precipitation stations and other key facilities. The mean precipitation over the West Coast Basin was 18.27 inches, which is 145% of the long-term mean of 12.63 inches (Figure 4).

B. Groundwater Recharge

Replenishment in the West Coast Basin occurs primarily by underflow from the Central Basin, which bounds the West Coast Basin on the east, and injection of imported and recycled water into the West Coast and Dominguez Gap Seawater intrusion barriers located along the coast. Natural recharge also occurs from precipitation infiltration.

Water spread in the Central Basin percolates into the aquifers there and eventually some groundwater crosses the Newport-Inglewood Uplift to replenish the groundwater in the West Coast Basin. Although the recharge water is not directly applied to the West Coast Basin, this recharge process returns large quantities of water to the Basin by substantially increasing the natural subsurface flow from the Central Basin to the West Coast Basin. During 2016-2017, Los Angeles County Department of Public Works (LACDPW) spread 32,693 acre-feet of water in the Montebello Forebay. Table 15 identifies the sources and shows the amounts of replenishment water spread in the Central Basin.

Water injected in the sea water intrusion barrier projects also contributes greatly to the replenishment of the West Coast Basin (see Section I, Sea Water Intrusion Barrier Projects).

C. In-Lieu Replenishment

During the 1965-1966 water year, WRD, in cooperation with the Metropolitan Water District of Southern California (MWD), began an in-lieu replenishment program. WRD may contract with any producer having access to supplemental water that could be used in lieu of extracting groundwater from the Basin. However, in recent years, MWD discontinued the availability of its supplemental replenishment water, thereby making the In-Lieu Program economically unfeasible in the West Coast Basin. As a result, the In-Lieu Replenishment Program is suspended indefinitely and no in-lieu recharge occurred in 2016-2017 (Table 16).

D. Imported Water

For the area overlying the West Coast Basin, imported water has been the largest component of supply since the mid-1950s. Table 17 shows sources, users, and quantities of imported water. During

2016-2017, 12 parties and 1 non-party (California-American Water Company) imported a total of 139,075 acre-feet of water.

E. Quality of Imported Water

The table below summarizes MWD's imported water quality for injection, spreading, and potable use. In 2016-2017, only State Water Project water was used for spreading, while injection and potable demands were met with a blend of Colorado River and State Water Project Water.

Constituent	Colorado River Water¹ (mg/L)	State Water Project Water² (mg/L)
Chloride	98	93
Sulfate	251	80
Hardness (as CaCO ₃)	291	129
Total Dissolved Solids	638	368

F. Recycled Water

Table 18 shows that 23,317 acre-feet of recycled water was used in the area overlying the Basin during 2016-2017. This amount does not include the recycled water used to replenish groundwater in the Basin.

G. Total Water Use

Figure 5 shows the total water use in the Basin during 2016-2017, including extracted groundwater, imported water for direct use, and recycled water for direct use.

H. Exported Water

No groundwater was exported from the Basin. California Water Service Company exported purchased imported water from the Basin to portions of its service area in the Palos Verdes Hills.

I. Seawater Intrusion Barrier Projects

The LACDPW operates two barrier projects, the West Coast Basin Barrier and the Dominguez Gap Barrier, within the West Coast Basin. Table 19 shows the quantities of imported and recycled water

¹ At Lake Mathews - from 2016 MWD Annual Water Quality Report

² At Castaic Lake - from 2016 MWD Annual Water Quality Report

injected into the two barrier wells. In 2016-2017, 20,842 acre-feet of water was injected into these two barrier systems.

J. Groundwater Levels

Figure 6 shows the location and water level elevations in the key wells located in the West Coast Basin.

Watermaster Administration Costs and Budget

To fund Watermaster activities, both the Administrative Body and the Water Rights Panel have annual assessments that are levied on water rights holders under the terms of the Judgment. The Administrative Body charges a flat fee of twenty dollars (\$20) per rights holder. The remaining amount of the Administrative Body budget is charged to rights holders based upon their proportional ownership of total adjudicated rights. The separate Water Rights Panel assessment is charged to all water rights holders at a rate of one dollar (\$1.00) per acre-foot.

The Watermaster budget for 2016-2017 is \$172,896.06. This amount is composed of the Water Rights Panel budget of \$64,468.25 and the Administrative Body budget of \$108,427.81. A summary of the 2016-2017 budget is provided in Table 20.

Table 1 - Water Rights Accounting (acre-feet)

Party	AR ¹ 2016-2017	Net Carryover ² 2015-2016	Leases ³		Storage ⁴	Allowable ⁵ Extraction	Amount Pumped	Balance ⁶	Allowable carryover into 2017-2018		Total
			with Flex	w/o Flex					Drought	Normal	
ABC Nursery, Inc.	24.10	6.92	0.00	0.00	0.00	31.02	22.00	9.02	0.00	9.02	9.02
Aqua Capital Management LP	0.00	11.80	0.00	0.00	0.00	11.80	0.00	11.80	0.00	0.00	0.00
Asahi Fancy Koi, Inc	2.00	34.20	0.00	0.00	0.00	36.20	0.00	36.20	32.20	2.00	34.20
Automation Industries, Inc	0.70	4.10	0.00	0.00	0.00	4.80	0.00	4.80	3.40	0.70	4.10
Cal. Water Service Co./Hawthorne Lease	0.00	475.79	1,882.00	0.00	0.00	2,357.79	1,095.45	1,262.34	0.00	1,262.34	1,262.34
Cal. Water Service Company	4,070.00	4,070.00	0.00	0.00	0.00	8,140.00	1,396.51	6,743.49	0.00	4,070.00	4,070.00
Cal. Water Service (Dominguez)	10,417.45	10,417.45	0.00	0.00	0.00	20,834.90	3,636.31	17,198.59	0.00	10,417.45	10,417.45
Carson-Harbor Village Mobile Home Park	7.00	7.00	0.00	0.00	0.00	14.00	0.00	14.00	0.00	7.00	7.00
Carson-Madrone Company	104.00	104.00	0.00	0.00	0.00	208.00	0.00	208.00	0.00	104.00	104.00
CBS, Inc.	9.50	9.50	0.00	0.00	0.00	19.00	0.00	19.00	0.00	9.50	9.50
Century Builders	4.70	4.70	0.00	0.00	0.00	9.40	0.00	9.40	0.00	4.70	4.70
Chandler Palos Verdes Sand & Gravel Company	4.20	4.20	0.00	0.00	0.00	8.40	0.00	8.40	0.00	4.20	4.20
Chevron USA Inc.	4,601.30	0.30	-950.00	0.00	0.00	3,651.60	0.00	3,651.60	0.00	3,651.30	3,651.30
Coastline Church of Christ	0.70	4.10	0.00	0.00	0.00	4.80	0.00	4.80	3.40	0.70	4.10
ConocoPhillips Company (Phillips '66)	6,170.00	3,700.85	0.00	0.00	0.00	9,870.85	4,286.62	5,584.23	787.78	4,796.45	5,584.23
Curtis, Owen W	0.36	3.08	0.00	0.00	0.00	3.44	0.00	3.44	2.72	0.36	3.08
Delaney, Golda Estate of	4.10	14.30	0.00	0.00	0.00	18.40	0.00	18.40	10.20	4.10	14.30
Eco Services Operations, LLC	521.00	122.23	0.00	0.00	0.00	643.23	409.31	233.92	0.00	233.92	233.92
EI Segundo City of	953.00	0.00	0.00	0.00	0.00	953.00	0.00	953.00	0.00	953.00	953.00
Engelsma, Susan Trust	12.10	12.10	0.00	0.00	0.00	24.20	0.00	24.20	0.00	12.10	12.10
Evergreen America Corporation	5.40	5.40	0.00	0.00	0.00	10.80	0.00	10.80	0.00	5.40	5.40
Fujimoto, SR. & St & JK	20.00	32.28	0.00	0.00	0.00	52.28	0.00	52.28	12.28	20.00	32.28
Gillingham, Florence R, et al	2.40	2.40	0.00	0.00	0.00	4.80	0.00	4.80	0.00	2.40	2.40
Golden State Water Company ⁷	7,502.24	3,164.57	0.00	0.00	3,300.00	10,008.81	3,172.45	6,836.36	3.39	3,532.97	3,536.36
Hawthorne, City of	1,882.00	0.00	-1,882.00	0.00	0.00	0.00	0.00	0.00	0.00	0.00	0.00
Hillside Memorial Park	104.10	-35.98	0.00	0.00	0.00	68.12	84.49	-16.37	0.00	-16.37	-16.37
Hollywood Park Land Company, LLC	282.00	0.00	0.00	0.00	0.00	282.00	0.00	282.00	0.00	282.00	282.00
Honeywell International, Inc.	22.50	22.50	0.00	0.00	0.00	45.00	0.00	45.00	0.00	22.50	22.50
Honold, Kristin Brandsma	11.80	11.80	0.00	0.00	0.00	23.60	0.00	23.60	0.00	11.80	11.80
Inglewood, City of	4,449.89	4,396.89	0.00	0.00	0.00	8,846.78	2,482.57	6,364.21	0.00	4,449.89	4,449.89
Kinder Morgan Liquids Terminals LLC	167.00	167.00	0.00	0.00	0.00	334.00	31.97	302.03	0.00	167.00	167.00
Leuzinger, Emma L Estate of	1.40	5.90	0.00	0.00	0.00	7.30	0.00	7.30	4.50	1.40	5.90
Lomita, City of	1,352.00	770.70	-250.00	0.00	0.00	1,872.70	448.93	1,423.77	0.00	1,102.00	1,102.00
Long Beach, City of	0.70	0.70	0.00	0.00	0.00	1.40	0.00	1.40	0.00	0.70	0.70
Lopes, Frank	3.70	13.10	0.00	0.00	0.00	16.80	0.00	16.80	9.40	3.70	13.10
L.A. County Department of Parks & Recreation	363.70	48.39	0.00	0.00	0.00	412.09	401.17	10.92	0.00	10.92	10.92

Table 1 - Water Rights Accounting Continued

Party	AR ¹ 2016-2017	Net Carryover ² 2015-2016	with Flex	Leases ³ w/o Flex	Storage ⁴	Allowable ⁵ Extraction	Amount Pumped	Balance ⁶	Drought	Normal	Allowable carryover into 2017-2018 Total
L.A. County Sanitation Districts-JWPCP	102.00	102.00	0.00	0.00	0.00	204.00	0.00	204.00	0.00	102.00	102.00
Los Angeles, City of	1,503.00	1,503.00	0.00	0.00	0.00	3,006.00	0.00	3,006.00	0.00	1,503.00	1,503.00
Loyola Marymount University	48.10	48.10	0.00	0.00	0.00	96.20	0.00	96.20	0.00	48.10	48.10
Manhattan Beach, City of	1,131.20	1,284.24	950.00	0.00	0.00	3,365.44	318.16	3,047.28	0.00	2,081.20	2,081.20
Mayflower Nurseries	0.00	0.00	0.00	0.00	0.00	0.00	0.00	0.00	0.00	0.00	0.00
McDonnell Douglas Corp.	1.70	1.70	0.00	0.00	0.00	3.40	0.00	3.40	0.00	1.70	1.70
Montrose Chemical Corporation of California	1.20	1.20	0.00	0.00	0.00	2.40	0.78	1.62	0.00	1.20	1.20
Mori, Roy H and Kenji	3.60	12.80	0.00	0.00	0.00	16.40	0.00	16.40	9.20	3.60	12.80
Northrop Corporation	38.15	38.15	0.00	0.00	0.00	76.30	0.00	76.30	0.00	38.15	38.15
Nozaki, Sumikichi	7.00	7.00	0.00	0.00	0.00	14.00	0.00	14.00	0.00	7.00	7.00
Pacific Crest Cemetery Company	39.40	-97.21	0.00	0.00	0.00	-57.81	83.79	-141.60	0.00	-141.60	-141.60
Palos Verdes Begonia Farm	0.00	7.40	0.00	0.00	0.00	7.40	0.00	7.40	7.40	0.00	7.40
Rehor, Josephine P	2.20	2.20	0.00	0.00	0.00	4.40	0.00	4.40	0.00	2.20	2.20
Rolling Hills Country Club	290.00	160.00	-25.00	0.00	0.00	425.00	142.00	283.00	0.00	265.00	265.00
Roman Catholic Archbishop of L.A.	72.30	43.18	250.00	0.00	0.00	365.48	249.22	116.26	0.00	116.26	116.26
Shell Oil Company	1,019.50	0.08	-1,019.50	0.00	0.00	0.08	0.00	0.08	0.08	0.00	0.08
Southern California Edison Co.	57.10	63.32	0.00	0.00	0.00	120.42	23.53	96.89	6.22	57.10	63.32
Tesoro Refining & Marketing Co.	8,741.00	9,760.50	1,019.50	0.00	0.00	19,521.00	6,423.59	13,097.41	0.00	9,760.50	9,760.50
Torrance Refining Co.	2,596.40	2,626.83	0.00	0.00	0.00	5,223.23	1,125.06	4,098.17	30.43	2,596.40	2,626.83
Torrance, City of	5,638.86	0.00	0.00	0.00	5,638.86	11,277.72	932.51	10,345.21	0.00	1,127.77	1,127.77
Vukelich, Mike Jr.	10.00	1.63	25.00	0.00	0.00	36.63	38.84	-2.21	0.00	-2.21	-2.21
Watson Land Company	80.20	80.20	0.00	0.00	0.00	160.40	0.00	160.40	0.00	80.20	80.20
Watt Industrial Properties	0.10	1.20	0.00	0.00	0.00	1.30	0.00	1.30	1.00	0.10	1.10
Wiseburn School District	8.20	8.20	0.00	0.00	0.00	16.40	0.00	16.40	0.00	8.20	8.20
TOTAL:	64,468.25	43,267.99	0.00	0.00	8,938.86	112,717.10	26,805.26	85,911.84	923.60	52,795.02	53,718.62

¹ AR - Adjudicated Rights.

² Net Carryover is the sum of all carryover from the previous year less the amount of carryover conversion for the current year.

³ See Table 9 for information concerning leases. Lease with flex includes carryover provisions.

⁴ Storage includes Carryover Conversion for Administrative Year 2016-17.

⁵ Allowable Extraction = Adjudicated Rights + Net Carryover + Leases + Storage.

⁶ Balance = Allowable Extraction - Amount Pumped.

⁷ Includes 3,959 acre-feet of increased extraction accounted for in Allowable Extraction (pursuant to Section IV(K) of the Central Basin Judgement).

Table 2 - Storage Accounting

Party	Carryover from 2015-2016		2016-2017 Storage Activity										Carryover to 2017-2018		
	ISA ¹	CSP ²	Transfers		Water put into Storage		Water Extracted From Storage		Balance			ISA	CSP	Total	
			ISA	CSP	ISA	CSP	ISA	CSP	ISA	CSP	Total				
Torrance, City of	2,255.54	1,917.16	-	-	-	1,466.00	-	-	2,255.54	3,383.16	5,638.70	2,255.54	3,383.16	5,638.70	
Golden State Water Company	0.00	0.00	-	-	3,000.90	299.10			3,000.90	299.10	3,300.00	3,000.90	299.10	3,300.00	
West Coast Basin Total	2,255.54	1,917.16	0.00	0.00	3,000.90	1,765.10	0.00	0.00	5,256.44	3,682.26	8,938.70	5,256.44	3,682.26	8,938.70	

¹ Individual Storage Account.

² Community Storage Pool.

Table 3 - Water Put Into Storage (2016-2017)

Party	Quantity	Storage Account ¹	Storage Method ²	Date
Golden State Water Company	3,000.90	ISA	CC	2/13/17
Golden State Water Company	299.10	CSP	CC	2/13/17
Torrance, City of	1,466.00	CSP	CC	8/10/17
Total:	4,766.00			

Table 4 - Water Extracted From Storage (2016-2017)

Party	Quantity	Storage Account	Date
No stored water was extracted in 2016 - 2017			

Table 5 - Storage Transfers (2016-2017)

Party	Quantity	Storage Account	Date
No stored water was transferred in 2016 - 2017			

Table 6 - Historic Storage

Year	Water Put Into Storage			Water Extracted From Storage			Storage Balance			Available Adjudicated Storage Capacity		
	ISA	CSP	Total	ISA	CSP	Total	ISA	CSP	Total	ISA	CSP	Total
2014	1,097.77	0.00	1,097.77	0.00	0.00	0.00	1,097.77	0.00	1,097.77	24,702.23	35,500.00	60,202.23
2015	1,157.77	1,917.16	3,074.93	0.00	0.00	0.00	4,172.70	1,917.16	6,089.86	23,544.46	33,582.84	57,127.30
2016	3,000.90	1,765.10	4,766.00	0.00	0.00	0.00	5,256.44	3,682.26	8,938.70	20,543.56	31,817.74	52,361.30

¹ CSP = Community Storage Pool. ISA = Individual Storage Account.

² CC = Carryover Conversion.

Table 7 - Overextractions

Party	Adjudicated Rights	Allowable Extraction	Amount Pumped	Overextraction ¹	Allowable Overextraction ²
Hillside Memorial Park	104.10	68.12	84.49	16.37 ³	10.41
Pacific Crest Cemetery	39.40	-57.81	83.79	141.60 ³	3.94
Vulkelich, Mike Jr.	10.00	36.63	38.84	2.21 ³	1.00
Total:	153.50	46.94	207.12	160.18	15.35

Table 8 - Non-Consumptive Water Use Permits

Party	Issued	Expires	2016-2017 Extraction (acre-feet)
Montrose Chemical Corporation	November 7, 2012	October 31, 2062	0.66
Brewer Desalter	July 22, 1992		390.55
Shell Oil	December 28, 2011	June 30, 2017	175.89
Total			567.10

Table 9. Extractions by Non-Parties

Non-party	Amount Pumped (acre-feet)
There were no extractions by non-parties in 2016-17	
Total	0.00

¹ Overextraction = Allowable Extraction - Amount Pumped.

² Judgment allows overextractions computed as 2 acre-feet or 10 percent of Adjudicated Rights, whichever is greater.

³ Violation of Judgment.

Table 10 - Adjudicated Rights Transfers (acre-feet)

Party	Transaction Type	Amount	Recordation Date	Party	Net Amount
California Water Service Co./Hawthorne Lease	Lease with flex	1,882.00	2/1/13	Hawthorne, City of	1,882.00
Chevron USA Inc.	Lease with flex	950.00	10/15/15	Manhattan Beach, City of	-950.00
Hawthorne, City of	Lease with flex	1,882.00	2/1/13	California Water Service Co./Hawthorne Lease	-1,882.00
Lomita, City of	Lease with flex	250.00	5/16/17	Roman Catholic Archbishop of Los Angeles	-250.00
Manhattan Beach, City of	Lease with flex	950.00	10/15/15	Chevron USA Inc.	950.00
Rolling Hills Country Club	Lease with flex	25.00	3/1/17	Vukelich, Mike Jr.	-35.00
Rolling Hills Country Club	Lease with flex	10.00	6/15/17	Vukelich, Mike Jr.	
Roman Catholic Archbishop of Los Angeles	Lease with flex	250.00	5/16/17	Lomita, City of	250.00
Shell Oil Company	Lease with flex	1,019.50	5/25/12	Tesoro Refining & Marketing Company	-1,019.50
Tesoro Refining & Marketing Company	Lease with flex	1,019.50	5/25/12	Shell Oil Company	1,019.50
Vukelich, Mike Jr.	Lease with flex	25.00	3/1/17	Rolling Hills Country Club	35.00
Vukelich, Mike Jr.	Lease with flex	10.00	6/15/17	Rolling Hills Country Club	
Total Leased Volume					4,136.50

Table 11 - Sales and Transfers 2016-2017 (acre-feet)

Party	Transaction Type	Amount	Recordation Date	Party	Net Amount
Aqua Capital Management LP	Sale	11.80	8/16/16	Hillside Memorial Park	-11.80
Hillside Memorial Park	Sale	11.80	8/16/16	Aqua Capital Management LP	11.80
Total Sales Volume					11.80

Table 12 - Exchange Pool (2016-2017)

Party	Adjudicated Rights	Required Offer	Actual Offer	Amount Sold	Payment due Exchanger
There were no requests for the Exchange Pool					

Table 13 - Extraction Wells Completed (2016-2017)

Party	Recordation No.	State Well No.	Owner Designation
Golden State Water Co.	1930097	3S/14W25P065	DA002

Table 14 - Extraction Wells Destroyed (2016-2017)

Party	Recordation No.	State Well No.	Owner Designation
There were no wells reported destroyed in 2016 - 2017			

Table 15 - Replenishment Operations

Water spread in the Montebello Forebay area of the Central Basin provides subsurface recharge to the West Coast Basin.

Source of Water	Quantity (acre-feet)	
	2015 - 2016	2016-2017
Local Runoff	11,374	57,188
Recycled water:		
Whittier Narrows Water Reclamation Plant	5,864	7,100
San Jose Water Reclamation Plant	46,782	51,571
Pomona Water Reclamation Plant	3,244	2,932
MWD untreated Tier 1 water purchased by WRD	23,961	32,693
Make-up water from Upper San Gabriel Basin	0	0
Total	91,225	151,484

Table 16 - Water Replenishment District In-Lieu Recharge (2016-2017)

Party	In-Lieu Amount (acre-feet)
There was no in-lieu recharge in FY 2016-17	
Total	0.00

Table 17 - Imported Water Use

Source of Water	Party	Quantity (acre-feet)	
		2015 - 2016	2016-2017
Colorado River and State Water Project	Long Beach, City of	17,860	19,324
Colorado River and State Water Project	West Coast Basin Municipal Water District:		
	California American Water Company	415	428
	California Water Service Company ¹	9,168	9,280
	California Water Service Company (Dominguez)	23,489	23,049
	California Water Service Company (Hawthorne Lease)	2,401	2,678
	El Segundo, City of	7,854	6,901
	Golden State Water Company	20,489	18,920
	Inglewood, City of	6,693	6,293
	Lomita, City of	1,374	1,549
	Manhattan Beach, City of	3,458	4,317
	West Basin MWD Subtotal	75,341	73,415
		13,668	
Colorado River and State Water Project	Torrance, City of		16,380
		27,804	
Owens River-Mono Basin, Colorado River, and State Water Project	Los Angeles, City of		27,605
		2,300	
Central Basin Groundwater	California-American Water Company		2,351
Total Imported Water		136,973	139,075

¹ Excludes 16,515.40 acre-feet of imported water that was exported to Palos Verdes.

Table 18 - Recycled Water Use

Source of Water	Party	Quantity (acre-feet)	
		2015-2016	2016-2017
West Basin Municipal Water District:	California Water Service Company	156	148
	California Water Service Company (Hawthorne Lease)	104	94
	California Water Service Company (Dominguez)	5,803	6,169
	El Segundo, City of	8,927	9,581
	Golden State Water Company	405	364
	Inglewood, City of	765	834
	Los Angeles, City of	874	825
	Manhattan Beach, City of	280	265
	Torrance, City of	4,012	5,037
Total Recycled Water		21,326	23,317

Table 19 - Seawater Intrusion Barrier Project Operations

Provisional data provided by the Los Angeles County Department of Public Works.

Barrier Project	Quantity (acre-feet)	
	2015-2016	2016-2017
West Coast Basin Barrier		
Imported water injection	1,080	3,861
Recycled water injection	13,410	13,006
Dominguez Gap Barrier		
Imported water injection	2,912	2,574
Recycled water injection	3,589	1,401
Total	20,991	20,842

Table 20 - Apportionment of Budget Among Parties (2016-2017)

Party	Adjudicated Rights	Water Rights Panel	Administrative Body	Total Amount Billed
ABC Nursery Inc.	24.10	\$24.10	\$60.11	\$84.21
Honeywell International Inc.	22.50	\$22.50	\$57.44	\$79.94
Aqua Capital Management LP	11.80	\$11.80	\$39.64	\$51.44
Asahi Fancy Koi Inc.	2.00	\$2.00	\$23.33	\$25.33
Automation Industries Inc.	0.70	\$0.70	\$21.16	\$21.86
CBS Inc.	9.50	\$9.50	\$35.81	\$45.31
California Water Service Company - Hermosa / Redondo	4,070.00	\$4,070.00	\$6,793.28	\$10,863.28
California Water Service Company - Dominquez	10,417.45	\$10,417.45	\$17,356.67	\$27,774.12
Carson Harbor Village Mobile Home Park	7.00	\$7.00	\$31.65	\$38.65
Carson-Madrona Company #3 Del Amo	104.00	\$104.00	\$193.08	\$297.08
Century Builders	4.70	\$4.70	\$27.82	\$32.52
Chandler Palos Verdes Sand & Gravel Company	4.20	\$4.20	\$26.99	\$31.19
Chevron U.S.A. Inc.	4,601.30	\$4,601.30	\$7,677.46	\$12,278.76
Coastline Church of Christ	0.70	\$0.70	\$21.16	\$21.86
Phillips 66 Company	6,170.00	\$6,170.00	\$10,288.09	\$16,458.09
Curtis, Owen	0.36	\$0.36	\$20.60	\$20.96
Estate of Golda Delaney	4.10	\$4.10	\$26.82	\$30.92
El Segundo, City of	953.00	\$953.00	\$1,605.98	\$2,558.98
Susan Engelsma Trust	12.10	\$12.10	\$40.14	\$52.24
Evergreen America Corporation	5.40	\$5.40	\$28.99	\$34.39
Fujimoto, S.R. & S.T. & J.K.	20.00	\$20.00	\$53.28	\$73.28
Gillingham, Florence R., et al	2.40	\$2.40	\$23.99	\$26.39
Golden State Water Company	7,502.24	\$7,502.24	\$12,505.19	\$20,007.43
Hawthorne, City of (California Water Service Co.)	1,882.00	\$1,882.00	\$3,152.02	\$5,034.02
Hillside Memorial Park	92.30	\$92.30	\$173.61	\$265.91
Hollywood Park Land Company, LLC	282.00	\$282.00	\$489.30	\$771.30
Honold, Kristin Brandsma	11.80	\$11.80	\$39.64	\$51.44
Inglewood, City of	4,449.89	\$4,449.89	\$7,425.49	\$11,875.38
Kinder Morgan Liquids Terminals, LLC	167.00	\$167.00	\$297.92	\$464.92
Estate of Emma L. Leuzinger	1.40	\$1.40	\$22.33	\$23.73
Long Beach, City of	0.70	\$0.70	\$21.16	\$21.86
Frank Lopes	3.70	\$3.70	\$26.16	\$29.86
Los Angeles Department of Water and Power, City of	1,503.00	\$1,503.00	\$2,521.29	\$4,024.29
Los Angeles County Recreation Facilities	363.70	\$363.70	\$625.27	\$988.97
Los Angeles County Sanitation District No. 2	102.00	\$102.00	\$189.75	\$291.75

Table 20 - Apportionment of Budget Among Parties (Continued)

Party	Adjudicated Rights	Water Rights Panel	Administrative Body	Total Amount Billed
Lomita Water System, City of	1,352.00	\$1,352.00	\$2,269.99	\$3,621.99
Loyola Marymount University	48.10	\$48.10	\$100.05	\$148.15
Manhattan Beach, City of	1,131.20	\$1,131.20	\$1,902.54	\$3,033.74
McDonnell Douglas Corporation	1.70	\$1.70	\$22.83	\$24.53
Exxon Mobil Oil Corporation	2,596.40	\$2,596.40	\$4,340.92	\$6,937.32
Montrose Chemical Corporation of California	1.20	\$1.20	\$22.00	\$23.20
Roy H. and Kenji Mori	3.60	\$3.60	\$25.99	\$29.59
Northrop Corporation	38.15	\$38.15	\$83.49	\$121.64
Nozaki, Sumikichi	7.00	\$7.00	\$31.65	\$38.65
Pacific Crest Cemetery Company	39.40	\$39.40	\$85.57	\$124.97
Josephine P. Rehor	2.20	\$2.20	\$23.66	\$25.86
Eco Services Operations LLC	521.00	\$521.00	\$887.05	\$1,408.05
Rolling Hills Country Club	290.00	\$290.00	\$502.62	\$792.62
Roman Catholic Archbishop of Los Angeles	72.30	\$72.30	\$140.32	\$212.62
Shell Oil Company	1,019.50	\$1,019.50	\$1,716.65	\$2,736.15
Southern California Edison Company	57.10	\$57.10	\$115.03	\$172.13
Tesoro Refining & Marketing Company LLC	8,741.00	\$8,741.00	\$14,566.73	\$23,307.73
Torrance, City of	5,638.86	\$5,638.86	\$9,404.17	\$15,043.03
Vukelich, Mike, Jr.	10.00	\$10.00	\$36.64	\$46.64
Watson Land Company	80.20	\$80.20	\$153.47	\$233.67
Watt Industrial Properties	0.10	\$0.10	\$20.17	\$20.27
Wiseburn School District	8.20	\$8.20	\$33.65	\$41.85
Total	64,468.25	\$64,468.25	\$108,427.81	\$172,896.06

Figure 1 - West Coast Basin
(showing groundwater production and key wells)

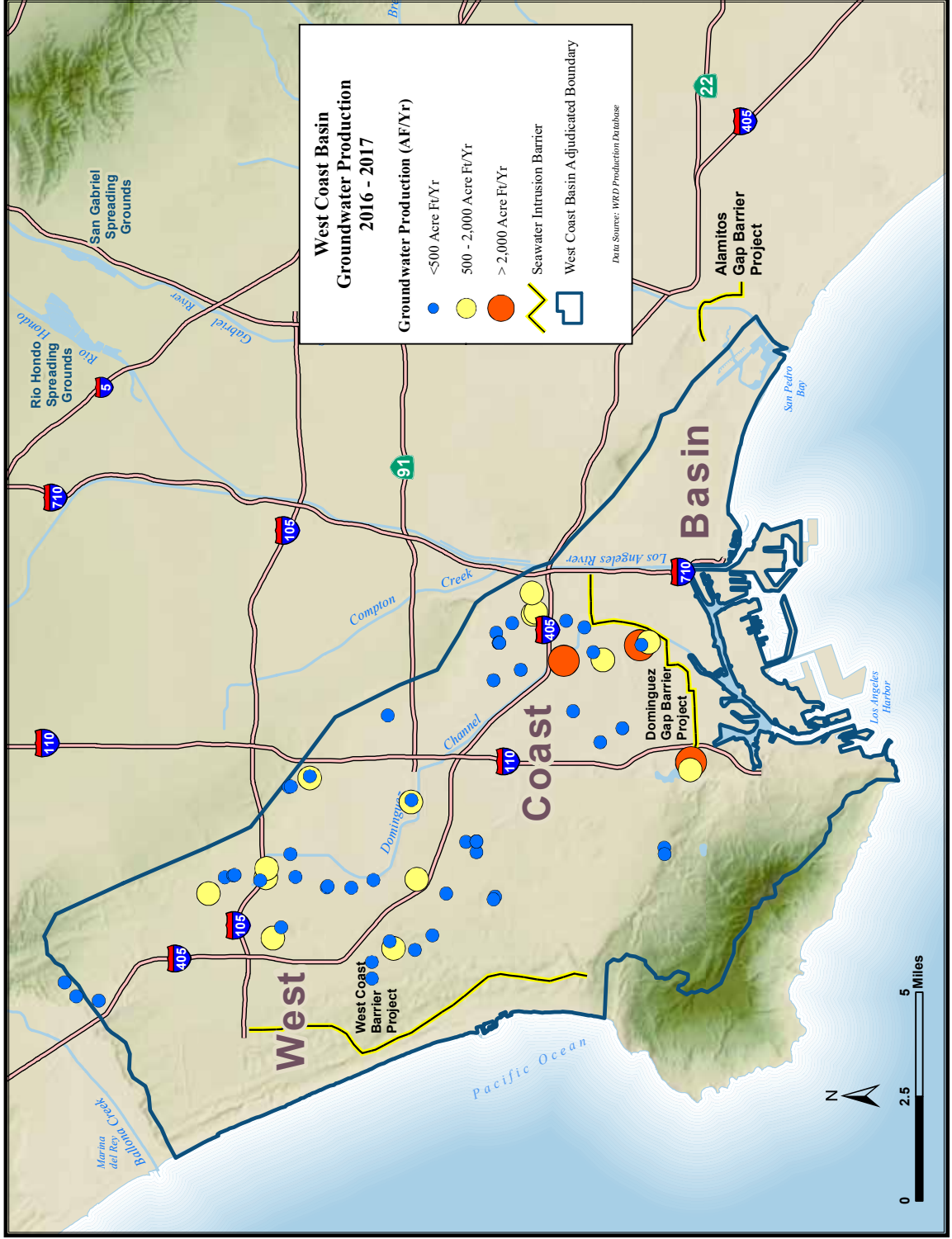


Figure 2 - Monthly Water Production (2016-2017)
(includes non-consumptive use)

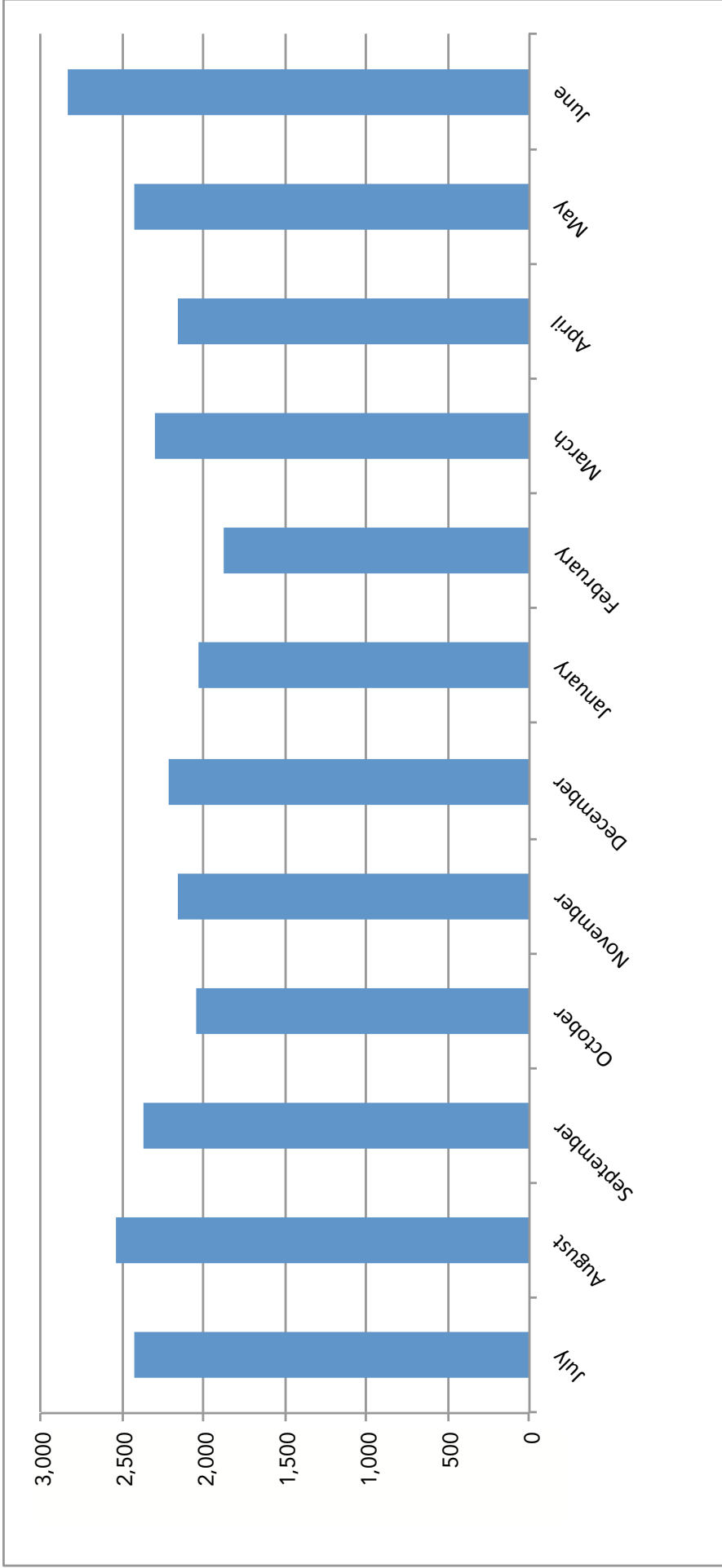


Figure 3 - West Coast Basin (showing key wells and facilities)



Figure 4 - Monthly Rainfall

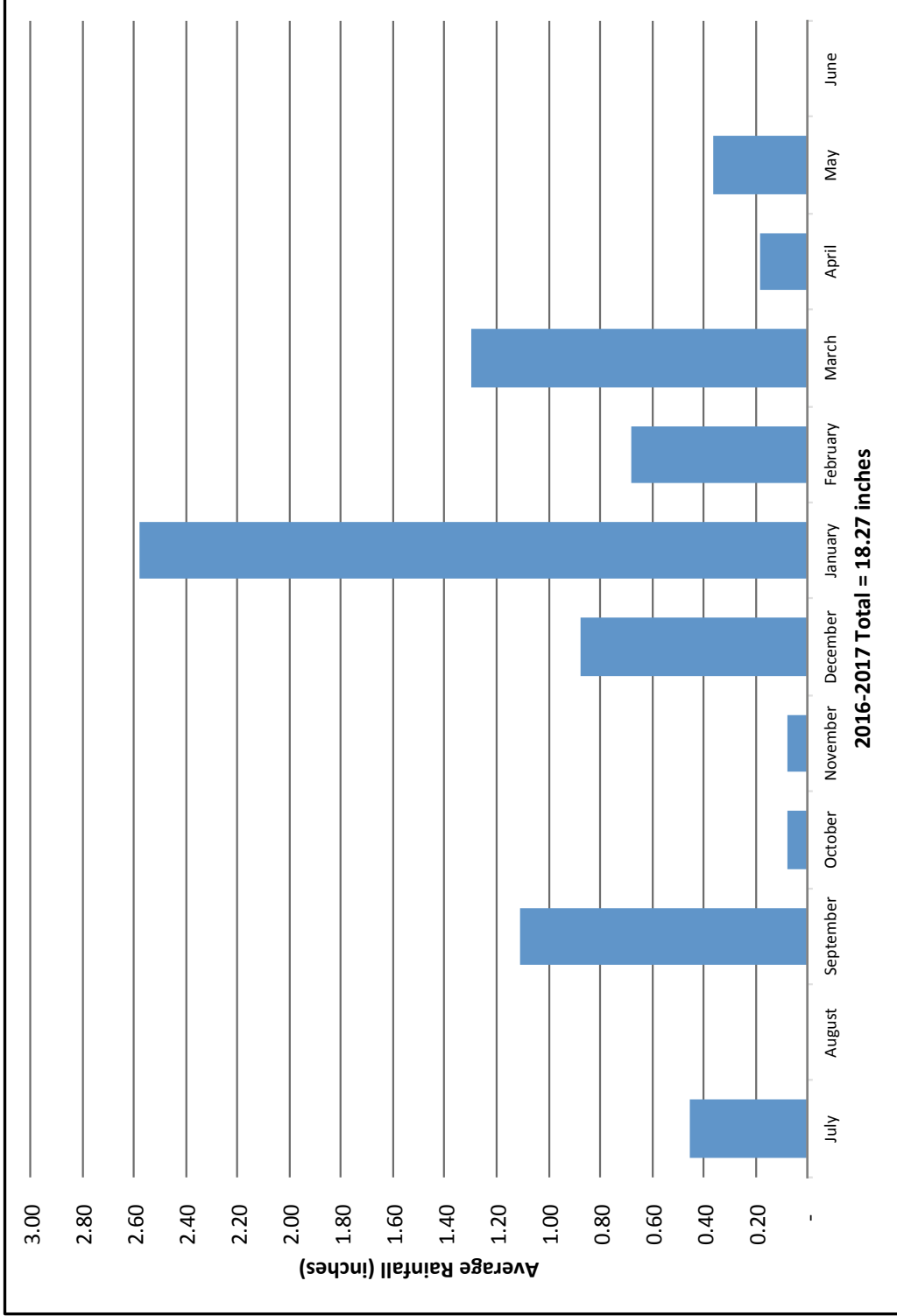


Figure 5 - Total Water Use

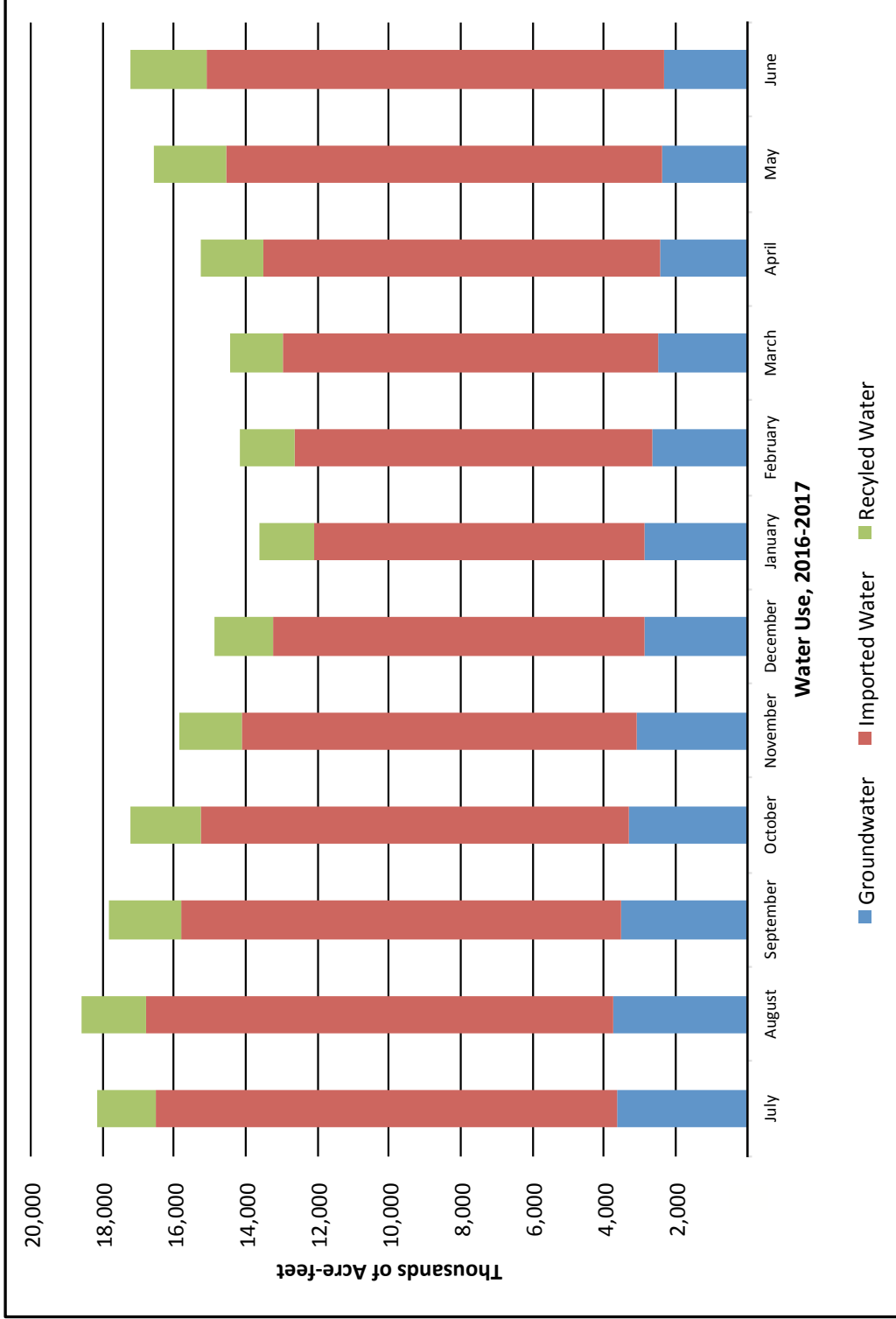
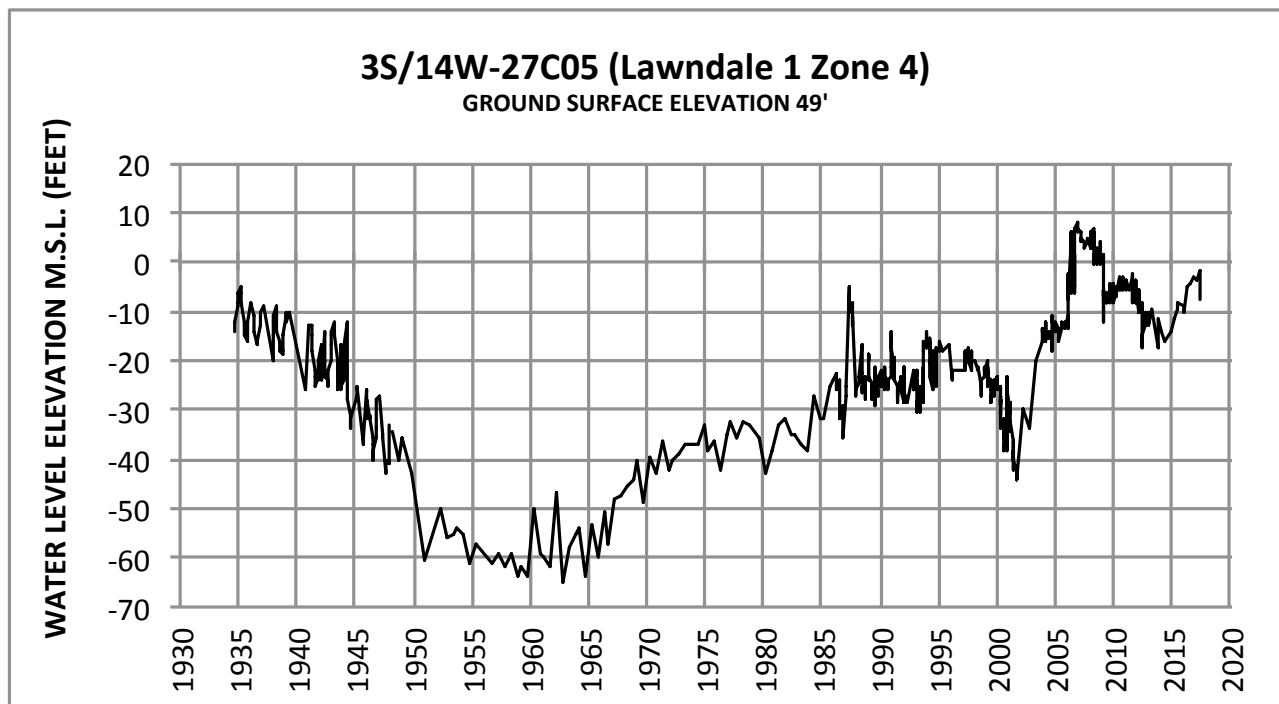
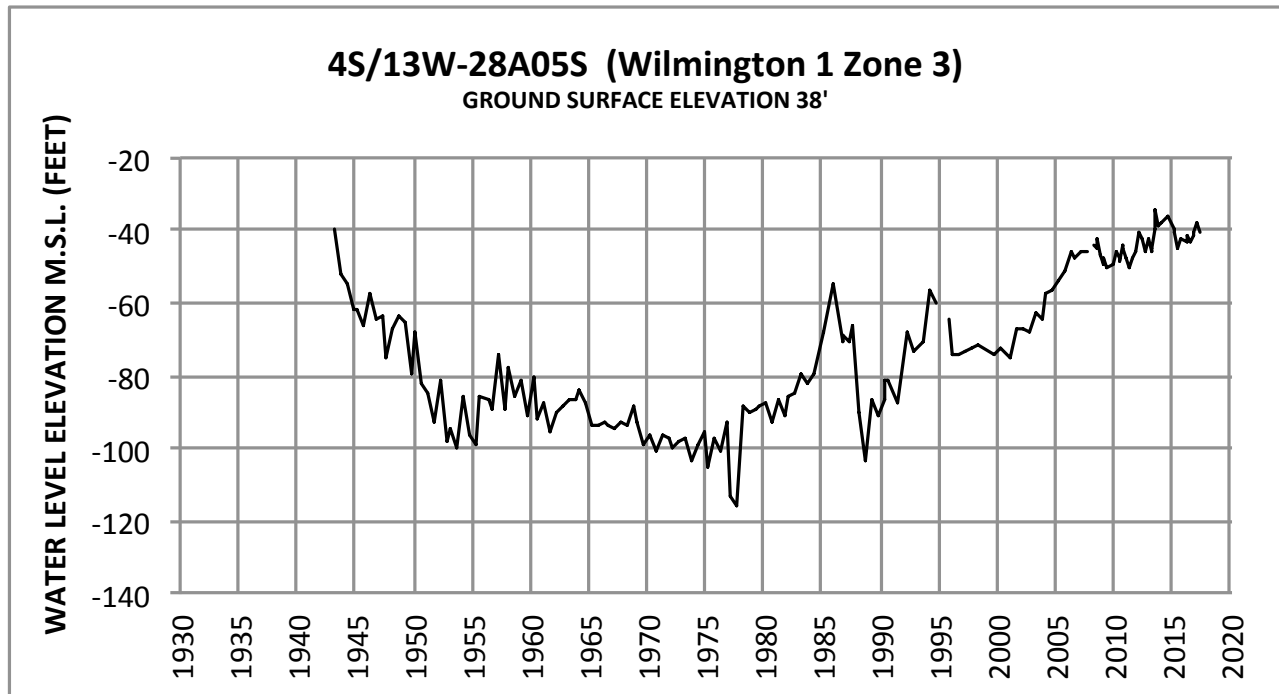


Figure 6 - Water Level Hydrographs



Appendix A

Groundwater Extractions

Appendix A - Groundwater Extractions (acre-feet)

Extractions 2016-17

7002- ABC Nursery, Inc.	JUL	AUG	SEPT	OCT	NOV	DEC	JAN	FEB	MAR	APR	MAY	JUN	TOTAL
SWN/Owner No.	3.00	6.00	1.00	1.00	1.00	0.00	0.00	1.00	0.00	4.00	0.00	5.00	22.00
003S013W29F011S/1	3.00	6.00	1.00	1.00	1.00	0.00	0.00	1.00	0.00	4.00	0.00	5.00	22.00

7026- Atlantic Richfield Co. (Oil Recovery)	JUL	AUG	SEPT	OCT	NOV	DEC	JAN	FEB	MAR	APR	MAY	JUN	TOTAL
SWN/Owner No.	0.00	0.00	0.00	0.00	0.00	0.00	0.00	0.00	0.00	0.00	0.00	0.00	0.00
004S013W21L002S/4	0.00	0.00	0.00	0.00	0.00	0.00	0.00	0.00	0.00	0.00	0.00	0.00	0.00

7052- California Water Service Co./Hawthorne Lease	JUL	AUG	SEPT	OCT	NOV	DEC	JAN	FEB	MAR	APR	MAY	JUN	TOTAL
SWN/Owner No.	137.96	160.23	145.61	115.66	70.97	140.76	104.77	0.00	0.00	0.43	57.37	161.69	1,095.45
003S014W09N005S/12	0.00	0.00	0.00	0.00	0.00	0.00	0.00	0.00	0.00	0.00	0.00	0.00	0.00
003S014W09M001S/13	137.96	160.23	145.61	115.66	70.97	140.76	104.77	0.00	0.00	0.43	57.37	161.68	1,095.44
003S014W09N004S/4	0.00	0.00	0.00	0.00	0.00	0.00	0.00	0.00	0.00	0.00	0.00	0.00	0.00
003S014W09P001S/8	0.00	0.00	0.00	0.00	0.00	0.00	0.00	0.00	0.00	0.00	0.00	0.01	0.01

7050- California Water Service Company	JUL	AUG	SEPT	OCT	NOV	DEC	JAN	FEB	MAR	APR	MAY	JUN	TOTAL
SWN/Owner No.	119.45	145.10	132.87	144.44	144.10	150.57	105.92	84.06	92.99	92.45	91.55	93.01	1,396.51
003S014W32A002S/08-02	30.11	57.12	55.42	49.18	61.14	59.76	13.79	0.00	0.00	0.00	0.00	0.00	326.52
003S014W29J001S/22-01	89.34	87.23	77.45	95.26	82.96	90.59	90.11	83.45	92.99	92.45	91.55	93.01	1,066.39
003S014W29H001S/30-01	0.00	0.75	0.00	0.00	0.00	0.22	2.02	0.61	0.00	0.00	0.00	0.00	3.60

7053- California Water Service Company (Dominguez)	JUL	AUG	SEPT	OCT	NOV	DEC	JAN	FEB	MAR	APR	MAY	JUN	TOTAL
SWN/Owner No.	230.83	365.55	329.91	287.87	367.51	369.30	317.15	331.77	392.16	150.17	160.48	333.61	3,636.31
004S013W15A011S/215-01	83.26	87.23	80.92	84.91	87.46	86.53	86.57	77.30	86.02	84.59	79.65	88.86	1,013.30
004S013W15B005S/215-02	0.00	0.00	0.00	0.00	0.00	0.00	0.00	0.00	0.00	0.00	0.00	0.00	0.00
004S013W17D002S/219-01	0.00	0.00	0.00	0.00	0.00	0.00	0.00	0.00	0.00	0.00	0.00	0.00	0.00
004S013W17D003S/219-02	0.00	0.00	0.00	0.00	0.00	0.00	0.00	0.00	0.00	0.00	0.00	0.00	0.00

Appendix A - Groundwater Extractions Continued

7053- California Water Service Company (Dominguez)		JUL	AUG	SEPT	OCT	NOV	DEC	JAN	FEB	MAR	APR	MAY	JUN	TOTAL
004S013W29E006S/275-01		0.00	0.00	0.00	0.00	0.00	0.00	0.00	0.00	0.00	0.00	0.00	0.07	0.07
004S013W15F001S/277-01		58.98	58.56	32.93	0.00	4.40	3.40	0.00	5.24	0.00	11.11	12.65	25.61	212.88
004S013W20C001S/279-01		0.00	0.00	0.00	0.00	0.00	0.00	0.60	73.09	108.61	1.61	27.88	100.17	311.96
004S013W11P002S/294-01		88.59	103.75	85.94	72.77	129.19	138.33	71.21	45.98	50.73	0.00	0.00	2.31	788.80
004S013W15A014S/298-01		0.00	116.01	130.12	130.19	146.46	141.04	158.77	130.16	146.80	52.86	40.30	116.59	1,309.30
004S013W15A006S/RCOMP		0.00	0.00	0.00	0.00	0.00	0.00	0.00	0.00	0.00	0.00	0.00	0.00	0.00
7058- Carson Auto, Inc.		JUL	AUG	SEPT	OCT	NOV	DEC	JAN	FEB	MAR	APR	MAY	JUN	TOTAL
SWN/Owner No.		0.00	0.00	0.00	0.00	0.00	0.00	0.00	0.00	0.00	0.00	0.00	0.00	0.00
004S013W15K005S/1		0.00	0.00	0.00	0.00	0.00	0.00	0.00	0.00	0.00	0.00	0.00	0.00	0.00
7093- ConocoPhillips Company		JUL	AUG	SEPT	OCT	NOV	DEC	JAN	FEB	MAR	APR	MAY	JUN	TOTAL
SWN/Owner No.		476.73	445.81	376.06	210.19	257.36	316.75	219.09	201.75	255.24	421.60	555.27	550.77	4,286.62
004S013W21J003S/5		204.08	187.55	146.12	59.75	86.23	45.68	14.12	0.07	0.00	193.33	295.80	296.06	1,528.79
004S013W31P003S/7		188.54	174.30	142.61	58.24	107.45	248.77	187.80	201.64	255.13	228.17	231.66	158.65	2,182.96
004S013W31N003S/LA005		0.00	0.00	0.00	0.00	0.00	0.00	0.00	0.00	0.00	0.00	0.00	0.00	0.00
004S013W31N004S/LA006		84.11	83.96	87.33	92.20	63.68	22.30	17.17	0.04	0.11	0.10	27.81	96.06	574.87
004S013W21R010S/W-4		0.00	0.00	0.00	0.00	0.00	0.00	0.00	0.00	0.00	0.00	0.00	0.00	0.00
004S013W21R001S/WI002		0.00	0.00	0.00	0.00	0.00	0.00	0.00	0.00	0.00	0.00	0.00	0.00	0.00
7623- Eco Services Operations, LLC		JUL	AUG	SEPT	OCT	NOV	DEC	JAN	FEB	MAR	APR	MAY	JUN	TOTAL
SWN/Owner No.		46.10	43.74	43.59	48.02	38.99	14.06	29.57	24.80	40.08	40.46	39.90	39.90	449.21
004S013W10C004S/2		46.10	43.74	43.59	48.02	38.99	14.06	29.57	24.80	40.08	40.46	39.90	39.90	449.21

Appendix A - Groundwater Extractions Continued

7511- ExxonMobil Oil Corp (Oil Recovery)		JUL	AUG	SEPT	OCT	NOV	DEC	JAN	FEB	MAR	APR	MAY	JUN	TOTAL
SWN/Owner No.		0.00	0.00	0.00	0.00	0.00	0.00	0.00	0.00	0.00	0.00	0.00	0.00	0.00
004S014W02M004S/EW-1		0.00	0.00	0.00	0.00	0.00	0.00	0.00	0.00	0.00	0.00	0.00	0.00	0.00
004S014W02L001S/EW-2		0.00	0.00	0.00	0.00	0.00	0.00	0.00	0.00	0.00	0.00	0.00	0.00	0.00
004S014W02L002S/EW-3		0.00	0.00	0.00	0.00	0.00	0.00	0.00	0.00	0.00	0.00	0.00	0.00	0.00
004S014W02L003S/EW-4		0.00	0.00	0.00	0.00	0.00	0.00	0.00	0.00	0.00	0.00	0.00	0.00	0.00
004S014W02F001S/EW-5		0.00	0.00	0.00	0.00	0.00	0.00	0.00	0.00	0.00	0.00	0.00	0.00	0.00
None/EW-6		0.00	0.00	0.00	0.00	0.00	0.00	0.00	0.00	0.00	0.00	0.00	0.00	0.00
7201- Fujimoto, SR. & St & JK		JUL	AUG	SEPT	OCT	NOV	DEC	JAN	FEB	MAR	APR	MAY	JUN	TOTAL
SWN/Owner No.		0.00	0.00	0.00	0.00	0.00	0.00	0.00	0.00	0.00	0.00	0.00	0.00	0.00
003S013W30A010S/1		0.00	0.00	0.00	0.00	0.00	0.00	0.00	0.00	0.00	0.00	0.00	0.00	0.00
7226- Golden State Water Company		JUL	AUG	SEPT	OCT	NOV	DEC	JAN	FEB	MAR	APR	MAY	JUN	TOTAL
SWN/Owner No.		190.53	194.78	282.35	250.23	228.17	234.04	234.00	209.00	264.04	239.11	320.71	525.49	3,172.45
003S014W14D002S/129-02		42.00	0.05	0.04	5.87	0.08	0.10	0.08	0.00	0.00	6.27	0.22	2.02	56.73
003S014W13B003S/BA004		0.03	0.03	4.62	2.41	0.04	0.04	0.08	0.08	3.30	0.10	0.10	2.41	13.24
003S014W13B004S/BA005		0.11	0.05	3.71	4.31	0.06	0.05	0.10	0.08	4.57	4.16	2.29	5.10	24.59
003S014W22L001S/CD001		0.00	0.01	2.60	0.12	0.02	0.04	0.08	0.14	2.62	0.06	0.06	2.55	8.30
003S014W21M001S/CH001		0.00	0.00	0.00	0.00	0.00	0.00	0.00	0.00	0.00	0.00	0.00	0.00	0.00
003S014W25P004S/DA001		108.17	108.94	101.12	107.33	104.38	107.05	107.12	92.83	107.69	104.02	106.44	102.75	1,257.84
003S014W15P001S/Doty1		0.00	0.04	0.00	0.11	0.05	0.05	0.05	0.00	2.92	0.09	22.78	82.22	108.31
003S014W15P002S/Doty2		0.03	0.96	42.79	0.95	0.07	0.18	0.24	0.20	4.20	0.12	29.92	106.82	186.48
003S014W15B003S/Goldmedal #1		0.07	0.11	0.07	0.17	0.09	0.07	0.20	0.29	4.34	0.13	30.67	94.63	130.84
003S014W13J009S/S0005		40.01	84.34	123.59	128.72	123.21	126.25	125.52	115.31	128.65	123.85	128.00	121.91	1,369.36
003S014W13J010S/S0006		0.04	0.04	3.70	0.18	0.03	0.06	0.09	0.07	5.70	0.16	0.10	5.08	15.25
003S014W02Q001S/TR004		0.00	0.00	0.00	0.00	0.00	0.00	0.00	0.00	0.00	0.00	0.00	0.00	0.00
003S014W03K005S/YU004		0.03	0.08	0.06	0.03	0.07	0.08	0.08	0.00	0.03	0.10	0.10	0.00	0.66
003S014W03K004S/YU005		0.04	0.13	0.05	0.03	0.07	0.07	0.07	0.00	0.02	0.05	0.03	0.00	0.56
003S014W25P006S/DA002		0.00	0.00	0.00	0.00	0.00	0.00	0.29	0.00	0.00	0.00	0.00	0.00	0.29

Appendix A - Groundwater Extractions Continued

7270- Hillside Memorial Park	JUL	AUG	SEPT	OCT	NOV	DEC	JAN	FEB	MAR	APR	MAY	JUN	TOTAL
SWN/Owner No.	15.89	15.42	11.95	7.61	4.47	1.56	0.08	0.06	1.51	0.00	11.89	14.05	84.49
002S014W19K004S/3	15.89	15.42	11.95	7.61	4.47	1.56	0.08	0.06	1.51	0.00	11.89	14.05	84.49
7003- Honeywell International, Inc.	JUL	AUG	SEPT	OCT	NOV	DEC	JAN	FEB	MAR	APR	MAY	JUN	TOTAL
SWN/Owner No.	0.00	0.00	0.00	0.00	0.00	0.00	0.00	0.00	0.00	0.00	0.00	0.00	0.00
003S014W35M007S/NEW	0.00	0.00	0.00	0.00	0.00	0.00	0.00	0.00	0.00	0.00	0.00	0.00	0.00
7312- Inglewood Park Cemetery	JUL	AUG	SEPT	OCT	NOV	DEC	JAN	FEB	MAR	APR	MAY	JUN	TOTAL
SWN/Owner No.	0.00	0.00	0.00	0.00	0.00	0.00	0.00	0.00	0.00	0.00	0.00	0.00	0.00
002S014W27M001S/17	0.00	0.00	0.00	0.00	0.00	0.00	0.00	0.00	0.00	0.00	0.00	0.00	0.00
002S014W27N002S/21	0.00	0.00	0.00	0.00	0.00	0.00	0.00	0.00	0.00	0.00	0.00	0.00	0.00
002S014W27N003S/22	0.00	0.00	0.00	0.00	0.00	0.00	0.00	0.00	0.00	0.00	0.00	0.00	0.00
7310- Inglewood, City of	JUL	AUG	SEPT	OCT	NOV	DEC	JAN	FEB	MAR	APR	MAY	JUN	TOTAL
SWN/Owner No.	205.27	196.46	177.94	199.19	222.49	228.59	226.80	209.84	214.14	205.17	197.91	198.77	2,482.57
003S014W10G003S/1	81.79	80.44	48.60	39.90	73.27	77.12	74.55	63.99	68.56	63.80	63.58	60.26	795.86
003S014W10G004S/2	0.00	0.00	25.16	62.53	61.33	61.47	62.51	56.98	62.58	60.65	52.47	58.82	564.50
003S014W10F002S/4	25.50	23.52	19.68	8.16	0.00	0.00	4.16	14.75	0.00	0.00	0.00	0.00	95.77
003S014W03F002S/5	0.10	0.10	0.10	0.10	0.10	0.10	0.10	0.00	0.00	0.00	0.00	0.00	0.70
003S014W03D003S/6	97.88	92.40	84.40	88.50	87.79	89.90	85.48	74.12	83.00	80.72	81.86	79.69	1,025.74
7364- Kinder Morgan Liquids Terminals LLC	JUL	AUG	SEPT	OCT	NOV	DEC	JAN	FEB	MAR	APR	MAY	JUN	TOTAL
SWN/Owner No.	1.70	2.30	1.76	3.82	4.21	3.88	1.10	0.31	3.98	3.69	3.41	1.81	31.97
None/None	1.70	2.30	1.76	3.82	4.21	3.88	1.10	0.31	3.98	3.69	3.41	1.81	31.97
7450- Lomita, City of	JUL	AUG	SEPT	OCT	NOV	DEC	JAN	FEB	MAR	APR	MAY	JUN	TOTAL
SWN/Owner No.	54.57	5.84	2.30	16.98	47.19	43.98	14.97	34.25	47.18	57.16	64.28	60.37	449.07
004S014W35E007S/5	54.57	5.84	2.30	16.98	47.19	43.98	14.97	34.25	47.18	57.16	64.28	60.37	449.07

Appendix A - Groundwater Extractions Continued

7435- Los Angeles County Department of Parks & Recreation	JUL	AUG	SEPT	OCT	NOV	DEC	JAN	FEB	MAR	APR	MAY	JUN	TOTAL
SWN/Owner No.	75.49	73.31	31.43	32.79	23.35	12.12	0.00	0.00	27.74	20.62	37.73	66.59	401.17
003S014W27C001S/00761	75.49	73.31	31.43	32.79	23.35	12.12	0.00	0.00	27.74	20.62	37.73	66.59	401.17
003S014W11J002S/1397C	0.00	0.00	0.00	0.00	0.00	0.00	0.00	0.00	0.00	0.00	0.00	0.00	0.00
7440- Los Angeles County Sanitation Districts-3WPCP	JUL	AUG	SEPT	OCT	NOV	DEC	JAN	FEB	MAR	APR	MAY	JUN	TOTAL
SWN/Owner No.	0.00	0.00	0.00	0.00	0.00	0.00	0.00	0.00	0.00	0.00	0.00	0.00	0.00
004S013W30C001S/819	0.00	0.00	0.00	0.00	0.00	0.00	0.00	0.00	0.00	0.00	0.00	0.00	0.00
7410- Los Angeles, City of Dept of Water and Power	JUL	AUG	SEPT	OCT	NOV	DEC	JAN	FEB	MAR	APR	MAY	JUN	TOTAL
SWN/Owner No.	0.00	0.00	0.00	0.00	0.00	0.00	0.00	0.00	0.00	0.00	0.00	0.00	0.00
004S013W30G003S/0320E	0.00	0.00	0.00	0.00	0.00	0.00	0.00	0.00	0.00	0.00	0.00	0.00	0.00
004S013W30G001S/0310C	0.00	0.00	0.00	0.00	0.00	0.00	0.00	0.00	0.00	0.00	0.00	0.00	0.00
004S013W30K001S/0320C	0.00	0.00	0.00	0.00	0.00	0.00	0.00	0.00	0.00	0.00	0.00	0.00	0.00
004S013W31E001S/MP001	0.00	0.00	0.00	0.00	0.00	0.00	0.00	0.00	0.00	0.00	0.00	0.00	0.00
7490- Manhattan Beach, City of	JUL	AUG	SEPT	OCT	NOV	DEC	JAN	FEB	MAR	APR	MAY	JUN	TOTAL
SWN/Owner No.	12.53	28.07	17.41	14.65	7.43	15.30	8.82	12.48	50.16	25.46	62.74	63.11	318.16
003S014W29D005S/11A	0.00	4.86	0.00	4.46	0.00	0.00	0.00	0.00	0.00	0.00	0.00	0.00	9.32
003S014W29C003S/15	12.53	23.21	17.41	10.19	7.43	15.30	8.82	12.48	50.16	25.46	62.74	63.11	308.84
7500- Mayflower Nurseries	JUL	AUG	SEPT	OCT	NOV	DEC	JAN	FEB	MAR	APR	MAY	JUN	TOTAL
SWN/Owner No.	0.00	0.00	0.00	0.00	0.00	0.00	0.00	0.00	0.00	0.00	0.00	0.00	0.00
003S014W25K006S/NORM 1	0.00	0.00	0.00	0.00	0.00	0.00	0.00	0.00	0.00	0.00	0.00	0.00	0.00

Appendix A - Groundwater Extractions Continued

7514- Montrose Chemical Corporation of California		JUL	AUG	SEPT	OCT	NOV	DEC	JAN	FEB	MAR	APR	MAY	JUN	TOTAL
SWN/Owner No.		0.00	0.00	0.38	0.00	0.00	0.00	0.00	0.00	0.20	0.00	0.08	0.00	0.66
004S014W01N004S/None		0.00	0.00	0.00	0.00	0.00	0.00	0.00	0.00	0.00	0.00	0.00	0.00	0.00
004S014W12A004S/None		0.00	0.00	0.00	0.00	0.00	0.00	0.00	0.00	0.00	0.00	0.00	0.00	0.00
004S014W12A003S/None		0.00	0.00	0.00	0.00	0.00	0.00	0.00	0.00	0.00	0.00	0.00	0.00	0.00
004S014W12A002S/None		0.00	0.00	0.00	0.00	0.00	0.00	0.00	0.00	0.00	0.00	0.00	0.00	0.00
004S014W01N003S/None		0.00	0.00	0.00	0.00	0.00	0.00	0.00	0.00	0.00	0.00	0.00	0.00	0.00
004S014W12A001S/None		0.00	0.00	0.00	0.00	0.00	0.00	0.00	0.00	0.00	0.00	0.00	0.00	0.00
004S014W01N002S/None		0.00	0.00	0.00	0.00	0.00	0.00	0.00	0.00	0.00	0.00	0.00	0.00	0.00
None/None		0.00	0.00	0.00	0.00	0.00	0.00	0.00	0.00	0.00	0.00	0.00	0.00	0.00
004S014W01P003S/None		0.00	0.00	0.01	0.00	0.00	0.00	0.00	0.00	0.00	0.00	0.00	0.00	0.01
004S014W12J002S/None		0.00	0.00	0.08	0.00	0.00	0.00	0.00	0.00	0.05	0.00	0.01	0.00	0.14
004S014W12G001S/None		0.00	0.00	0.04	0.00	0.00	0.00	0.00	0.00	0.02	0.00	0.01	0.00	0.07
004S014W12J001S/None		0.00	0.00	0.04	0.00	0.00	0.00	0.00	0.00	0.02	0.00	0.01	0.00	0.07
004S014W12B005S/None		0.00	0.00	0.02	0.00	0.00	0.00	0.00	0.00	0.01	0.00	0.01	0.00	0.04
None/None		0.00	0.00	0.00	0.00	0.00	0.00	0.00	0.00	0.00	0.00	0.00	0.00	0.00
None/None		0.00	0.00	0.06	0.00	0.00	0.00	0.00	0.00	0.04	0.00	0.01	0.00	0.11
004S014W12L001S/None		0.00	0.00	0.02	0.00	0.00	0.00	0.00	0.00	0.01	0.00	0.00	0.00	0.03
004S014W12J003S/None		0.00	0.00	0.02	0.00	0.00	0.00	0.00	0.00	0.01	0.00	0.01	0.00	0.04
004S014W12B006S/None		0.00	0.00	0.08	0.00	0.00	0.00	0.00	0.00	0.04	0.00	0.02	0.00	0.14
004S014W12B002S/None		0.00	0.00	0.01	0.00	0.00	0.00	0.00	0.00	0.00	0.00	0.00	0.00	0.01
None/None		0.00	0.00	0.00	0.00	0.00	0.00	0.00	0.00	0.00	0.00	0.00	0.00	0.00
004S014W01P002S/None		0.00	0.00	0.00	0.00	0.00	0.00	0.00	0.00	0.00	0.00	0.00	0.00	0.00
004S014W12B004S/None		0.00	0.00	0.00	0.00	0.00	0.00	0.00	0.00	0.00	0.00	0.00	0.00	0.00
004S014W12B003S/None		0.00	0.00	0.00	0.00	0.00	0.00	0.00	0.00	0.00	0.00	0.00	0.00	0.00
004S014W12B001S/None		0.00	0.00	0.00	0.00	0.00	0.00	0.00	0.00	0.00	0.00	0.00	0.00	0.00
7533- Myron Z. Chalavin & Nettie Desser Trust & JHD Pr.		JUL	AUG	SEPT	OCT	NOV	DEC	JAN	FEB	MAR	APR	MAY	JUN	TOTAL
SWN/Owner No.		0.08	0.00	0.00	0.00	0.00	0.01	0.00	0.00	0.00	0.00	0.00	0.00	0.09
004S013W15Q001S/878H		0.08	0.00	0.00	0.00	0.00	0.01	0.00	0.00	0.00	0.00	0.00	0.00	0.09

Appendix A - Groundwater Extractions Continued

7580- Pacific Crest Cemetery Company	JUL	AUG	SEPT	OCT	NOV	DEC	JAN	FEB	MAR	APR	MAY	JUN	TOTAL
SWN/Owner No.	7.28	9.19	10.77	0.53	7.82	5.84	4.97	3.26	6.07	0.00	19.84	8.22	83.79
003S014W33E001S/7Z 83	7.28	9.19	10.77	0.53	7.82	5.84	4.97	3.26	6.07	0.00	19.84	8.22	83.79
7655- Rolling Hills Country Club	JUL	AUG	SEPT	OCT	NOV	DEC	JAN	FEB	MAR	APR	MAY	JUN	TOTAL
SWN/Owner No.	3.00	11.00	7.00	0.00	11.00	0.00	8.00	13.00	13.00	0.00	8.00	68.00	142.00
004S014W35E006S/2	3.00	11.00	7.00	0.00	11.00	0.00	8.00	13.00	13.00	0.00	8.00	68.00	142.00
004S014W35F002S/PLANT	0.00	0.00	0.00	0.00	0.00	0.00	0.00	0.00	0.00	0.00	0.00	0.00	0.00
7659- Roman Catholic Archbishop of Los Angeles	JUL	AUG	SEPT	OCT	NOV	DEC	JAN	FEB	MAR	APR	MAY	JUN	TOTAL
SWN/Owner No.	39.86	44.48	32.49	20.93	16.11	3.33	0.06	0.10	0.00	34.56	25.85	31.45	249.22
002S014W18J001S/AA	39.85	44.48	32.31	20.93	16.11	3.33	0.06	0.10	0.00	34.56	25.85	31.45	249.03
002S014W18Q002S/HOLY1	0.01	0.00	0.18	0.00	0.00	0.00	0.00	0.00	0.00	0.00	0.00	0.00	0.19
002S014W18Q001S/OLY0	0.00	0.00	0.00	0.00	0.00	0.00	0.00	0.00	0.00	0.00	0.00	0.00	0.00
7701- Shell Oil Co NCWUP	JUL	AUG	SEPT	OCT	NOV	DEC	JAN	FEB	MAR	APR	MAY	JUN	TOTAL
SWN/Owner No.	4.44	4.57	1.42	12.32	9.81	14.20	12.21	8.22	13.03	13.05	15.97	13.40	122.64
004S013W10K002S/DOM-GSP-R2M	4.44	4.57	1.42	12.32	9.81	14.20	12.21	8.22	13.03	13.05	15.97	13.40	122.64
7720- Southern California Edison Co.	JUL	AUG	SEPT	OCT	NOV	DEC	JAN	FEB	MAR	APR	MAY	JUN	TOTAL
SWN/Owner No.	2.62	2.32	3.05	1.71	0.76	0.19	0.16	0.56	2.28	2.79	3.09	4.11	23.64
003S014W34B002S/FRESA	0.00	0.00	0.00	0.00	0.00	0.00	0.00	0.00	0.00	0.00	0.00	0.00	0.00
004S013W27A002S/HANSEN	0.00	0.00	0.00	0.00	0.00	0.00	0.00	0.00	0.00	0.00	0.00	0.00	0.00
004S013W14A007S/MORR1	0.00	0.00	0.00	0.00	0.00	0.00	0.00	0.00	0.00	0.00	0.00	0.00	0.00
003S014W34N004S/SCECO	2.62	2.32	3.05	1.71	0.76	0.19	0.16	0.56	2.28	2.79	3.09	4.11	23.64

Appendix A - Groundwater Extractions Continued

7808- Tesoro (Shell Carson Terminal)		JUL	AUG	SEPT	OCT	NOV	DEC	JAN	FEB	MAR	APR	MAY	JUN	TOTAL
SWN/Owner No.		1.97	5.06	4.96	4.90	4.69	4.25	2.81	1.62	4.98	5.16	6.53	6.32	53.25
004S013W10E007S/DD-3		0.61	1.64	1.60	1.58	1.51	1.39	0.87	0.48	1.66	1.72	2.11	2.04	17.21
004S013W09P001S/DR-18		0.07	0.07	0.08	0.08	0.08	0.04	0.10	0.09	0.00	0.00	0.10	0.10	0.81
004S013W09D001S/DR-7		0.07	0.07	0.08	0.08	0.08	0.04	0.10	0.09	0.00	0.00	0.10	0.10	0.81
004S013W10E005S/R-122		0.61	1.64	1.60	1.58	1.51	1.39	0.87	0.48	1.66	1.72	2.11	2.04	17.21
004S013W10E006S/R-123		0.61	1.64	1.60	1.58	1.51	1.39	0.87	0.48	1.66	1.72	2.11	2.04	17.21
7807- Tesoro Refining & Marketing Company		JUL	AUG	SEPT	OCT	NOV	DEC	JAN	FEB	MAR	APR	MAY	JUN	TOTAL
SWN/Owner No.		609.28	591.27	571.66	495.90	538.34	533.92	511.48	542.34	622.68	582.01	503.55	560.01	6,662.44
004S013W21J002S/10		33.49	30.03	23.98	28.17	25.57	29.71	36.74	40.00	36.00	33.98	28.46	17.00	363.13
004S013W27N006S/10		112.63	108.23	105.92	108.60	101.86	103.97	94.20	120.71	139.31	121.71	103.53	126.51	1,347.18
004S013W16R002S/11		0.00	0.00	0.00	0.00	0.00	0.00	0.00	0.00	0.00	0.00	0.00	0.00	0.00
004S013W34F007S/11		0.00	0.00	0.00	0.00	0.00	189.57	0.00	0.00	0.00	0.00	0.00	0.00	189.57
004S013W21H007S/12		0.00	0.00	0.00	0.00	0.00	0.00	0.00	0.00	0.00	0.00	0.00	0.00	0.00
004S013W16J005S/13		0.00	0.00	0.00	0.00	0.00	0.00	0.00	0.00	0.00	0.00	0.00	0.00	0.00
004S013W21H002S/4		0.00	0.00	0.00	0.00	0.00	0.00	0.00	0.00	0.00	0.00	0.00	0.00	0.00
004S013W22E001S/5		0.00	0.00	0.00	0.00	0.00	0.00	0.00	0.00	0.00	0.00	0.00	0.00	0.00
004S013W21H005S/7		0.00	0.00	0.00	0.00	0.00	0.00	0.00	0.00	0.00	0.00	0.00	0.00	0.00
004S013W21H006S/8		0.00	0.00	0.00	0.00	0.00	0.00	0.00	0.00	0.00	0.00	0.00	0.00	0.00
004S013W22F001S/9		0.00	0.00	0.00	0.00	0.00	0.00	0.00	0.00	0.00	0.00	0.00	0.00	0.00
004S013W27M005S/9		0.00	0.00	0.00	0.00	0.00	0.00	0.00	0.00	0.00	0.00	0.00	0.00	0.00
004S013W22F002S/HA001		0.00	0.00	0.00	0.00	0.00	0.00	0.00	0.00	0.00	0.00	0.00	0.00	0.00
004S013W22F007S/SRP12		30.00	30.97	28.53	26.22	24.16	25.79	25.01	18.75	24.22	23.98	21.12	20.82	299.57
004S013W16J006S/None		203.74	196.89	189.29	115.91	183.60	181.40	195.02	203.95	231.97	215.92	214.02	217.25	2,348.96
004S013W27M006S/None		225.76	220.72	220.30	213.63	199.47	0.00	156.98	154.37	184.36	180.79	129.51	173.83	2,059.72
009S099W99P099S/None		3.66	4.43	3.64	3.37	3.68	3.48	3.53	4.56	6.82	5.63	6.91	4.60	54.31

Appendix A - Groundwater Extractions Continued

7510- Torrance Refining Co.	JUL	AUG	SEPT	OCT	NOV	DEC	JAN	FEB	MAR	APR	MAY	JUN	TOTAL
SWN/Owner No.	115.07	103.82	105.03	101.15	103.04	112.42	114.75	86.05	89.86	111.60	0.00	82.27	1,125.06
004S014W02N001S/EW-01R	0.00	0.00	0.00	0.00	0.00	0.00	0.00	0.00	0.00	0.00	0.00	0.00	0.00
004S014W03M001S/M-06	0.00	0.00	0.00	0.00	0.00	0.00	0.00	0.00	0.00	0.00	0.00	0.00	0.00
004S014W03F001S/M-07	0.00	0.00	0.00	0.00	0.00	0.00	0.00	0.00	0.00	0.00	0.00	0.00	0.00
004S014W02M001S/RW-1	0.00	0.00	0.00	0.00	0.00	0.00	0.00	0.00	0.00	0.00	0.00	0.00	0.00
004S014W02M002S/RW-2	0.00	0.00	0.00	0.00	0.00	0.00	0.00	0.00	0.00	0.00	0.00	0.00	0.00
004S014W02M003S/RW-3	0.00	0.00	0.00	0.00	0.00	0.00	0.00	0.00	0.00	0.00	0.00	0.00	0.00
004S014W03L007S/T0010	0.00	0.00	0.00	0.00	0.00	0.00	0.00	0.00	0.00	0.00	0.00	0.00	0.00
None/None	0.00	0.00	0.00	0.00	0.00	0.00	0.00	0.00	0.00	0.00	0.00	0.00	0.00
004S014W02F001S/None	35.27	29.66	18.93	19.28	19.50	27.35	27.26	13.50	3.57	26.69	0.00	21.04	242.05
004S014W02L003S/None	14.07	9.63	5.54	6.47	11.32	12.57	12.74	8.91	11.54	13.28	0.00	2.63	108.70
004S014W02L002S/None	32.30	27.76	22.15	11.68	11.19	11.65	11.68	9.16	11.97	11.50	0.00	5.06	166.10
004S014W02L001S/None	33.43	30.65	32.27	33.73	31.92	32.88	33.02	26.34	32.28	30.85	0.00	27.54	344.91
004S014W02M004S/None	0.00	6.12	26.14	29.99	29.11	27.97	30.05	28.14	30.50	29.28	0.00	26.00	263.30
None/None	0.00	0.00	0.00	0.00	0.00	0.00	0.00	0.00	0.00	0.00	0.00	0.00	0.00
7850- Torrance, City of	JUL	AUG	SEPT	OCT	NOV	DEC	JAN	FEB	MAR	APR	MAY	JUN	TOTAL
SWN/Owner No.	1.07	0.00	0.89	0.00	15.47	7.88	112.02	104.20	147.37	148.89	204.15	190.57	932.51
003S014W34C002S/6	0.00	0.00	0.00	0.00	0.00	0.00	0.00	0.00	0.00	0.00	0.00	0.00	0.00
004S014W14K001S/7	0.00	0.00	0.00	0.00	0.00	0.00	0.00	0.00	0.00	0.00	0.00	0.00	0.00
003S014W34C003S/9	0.00	0.00	0.89	0.00	15.47	7.88	112.02	104.20	147.37	148.89	204.15	190.57	931.44
004S014W09A001S/MDR_2	1.07	0.00	0.00	0.00	0.00	0.00	0.00	0.00	0.00	0.00	0.00	0.00	1.07
7913- Vukelich, Mike Jr.	JUL	AUG	SEPT	OCT	NOV	DEC	JAN	FEB	MAR	APR	MAY	JUN	TOTAL
SWN/Owner No.	3.11	4.65	3.59	2.35	2.35	0.71	1.01	2.44	4.83	5.35	4.20	4.25	38.84
004S013W19J006S/829M	3.11	4.65	3.59	2.35	2.35	0.71	1.01	2.44	4.83	5.35	4.20	4.25	38.84

Appendix B

Successions of Adjudicated Rights

June 2017

Appendix B - Succession of Adjudicated Rights June 2017 (acre-feet)

<u>ABC NURSERY, INC</u>			SOLD TO CITY OF TORRANCE	-59.96	
SUCCESSOR TO JENKINS, HARRY C	1.80		TOTAL		0.00
SUCCESSOR TO TITLE, SIDNEY R AND CHARLOTTE W	13.60		BAUMAN, GUS A	0.00	0.00
SUCCESSOR TO VERBURG, WILLIAM AND CLARA B	6.70		TRANSFERRED TO PALOS VERDES BEGONIA FARM		
SUCCESSOR IN PART TO UNITED CALIFORNIA BANK	2.00		BEGO CORPORATION	4.10	
TOTAL		<u>24.10</u>	SOLD TO ESTATE OF GOLDA DELANEY	-4.10	
ABELL, FRANK	1.80		TOTAL		0.00
SOLD TO CITY OF INGLEWOOD	-1.80		BELVIDERE MUTUAL WATER CO	33.40	
TOTAL		0.00	SOLD TO CITY OF TORRANCE	-33.40	
ALCAST FOUNDRY, ET AL	7.20		TOTAL		0.00
SOLD TO CITY OF TORRANCE	-7.20		BLACK, DANA		
TOTAL		0.00	SUCCESSOR IN PART TO ESTATE OF JOHN GRANT	11.80	
ALLIED CHEMICAL CORP			SOLD TO ECOGAS, INC.	-11.80	
(SEE INDUSTRIAL CHEMICAL DIVISION, ALLIED CHEMICAL CORP)			TOTAL		0.00
ALLIED CORP			BOISE CASCADE BUILDING CO		
(FORMERLY: ALLIED CHEMICAL CORP)			SUCCESSOR IN PART TO JOUGHIN TORRANCE RANCH	16.92	
(NOW KNOWN AS ALLIED-SIGNAL, INC [EL SEGUNDO OFFICE])			SOLD TO INGLEWOOD, CITY OF	-16.92	
ALLIED-SIGNAL, INC (TORRANCE OFFICE)			TOTAL		0.00
SUCCESSOR TO GARRETT CORP, THE	22.50		BOARD OF RETIREMENT-LOS ANGELES CO EMPL RET SYS		
(MERGED WITH HONEYWELL INTERNATIONAL, INC AND NAME CHANGED TO HONEYWELL INTERNATIONAL, INC)	-22.50		SECOND WEST COAST BASIN JUDGMENT		
TOTAL		0.00	(NOW KNOWN AS LOS ANGELES COUNTY WESTERN AVE GOLF)		
ALLIED-SIGNAL, INC (EL SEGUNDO OFFICE)			BRANDSMA, MAYNARD		
(FORMERLY: ALLIED CORP)	255.00		SUCCESSOR IN PART TO ESTATE OF JOHN GRANT	11.80	
(MERGED WITH HONEYWELL INTERNATIONAL, INC AND NAME CHANGED TO HONEYWELL INTERNATIONAL, INC)	-255.00		SOLD TO HILLSIDE MEMORIAL PARK	-11.80	
TOTAL		0.00	TOTAL		0.00
ALWAG, HILARIO S AND EMMA			BURKE, W F AND LOIS PRICE	9.50	
SUCCESSOR TO T C NAVARRO	53.90		SOLD TO H S SCOTT	-9.50	
SUCCESSOR TO PEGGY SWICK	5.50		TOTAL		0.00
SOLD TO TORRANCE UNIFIED SCHOOL DISTRICT	-59.40		CBS INC		
TOTAL		0.00	FORMERLY COLUMBIA BROADCASTING SYS INC	18.50	
AMERICAN PLANT GROWERS, INC			SOLD TO MORAN, RONALD E	-9.00	
SECOND WEST COAST BASIN JUDGMENT	2.60		TOTAL		9.50
SUCCESSOR TO BEN CLUFF DAIRY	7.40		CALIFORNIA, STATE OF		
SOLD TO SUNRISE GROWERS, INC	-10.00		SUCCESSOR TO ROBERT L FULLILOVE	1.00	
SUCCESSOR TO SUNRISE GROWERS, INC	10.00		SUCCESSOR TO JOE MONIZ JR	2.20	
SOLD TO VUKELICH MIKE, JR.	-10.00		SUCCESSOR IN PART TO KELLY PIPE CO	16.30	
TOTAL		0.00	SUCCESSOR IN PART TO FLAVIO RODRIGUEZ	4.00	
ANDERSON, REMBERT C	80.50		SUCCESSOR IN PART TO A H SMITH (SAM SURBER AND FRED A SMITH)	2.60	
SOLD TO SPARKLETTS DRINKING WATER CORP	-80.50		SOLD TO SPARKLETTS DRINKING WATER CORP	-26.10	
TOTAL		0.00	TOTAL		0.00
AQUA CAPITAL MANAGEMENT LP			CALIFORNIA WATER SERVICE CO	3,071.00	
SUCCESSOR TO ECOGAS	11.80		SUCCESSOR TO PALOS VERDES WATER CO	999.00	
TOTAL		<u>0.00</u>	TOTAL		<u>4,070.00</u>
ASAHI FANCY KOI, INC			CALIFORNIA WATER SERVICE CO (DOMINGUEZ)		
SUCCESSOR IN PART TO JAKE ENGELSMA	2.00	<u>2.00</u>	DOMINGUEZ WATER CO MERGED WITH AND INTO CALIFORNIA WATER SERVICE CO, WATERMASTER ACCOUNT KNOWN AS CALIFORNIA WATER SERVICE CO (DOMINGUEZ)	10,162.45	
ASSOCIATED SOUTHERN INVESTMENT CO (FORMERLY EDISON SECURITIES CO)	46.70		SUCCESSOR IN PART TO HONEYWELL INTERNATIONAL INC	255.00	
SOLD TO SOUTHERN CALIFORNIA EDISON CO	-46.70		TOTAL		<u>10,417.45</u>
TOTAL		0.00	CARSON ESTATE CO	130.00	
ATLANTIC RICHFIELD CO (FORMERLY RICHFIELD OIL CO)	4,428.00		SOLD TO DOMINGUEZ WATER CORP	-130.00	
SUCCESSOR TO MANVILLE SALES CORP	881.00		TOTAL		0.00
SOLD TO TESORO REFINING AND MARKETING COMPANY LLC (6-13-2013)	-5,309.00		CARSON-HARBOR VILLAGE MOBILE HOME PARK		
TOTAL		0.00	SUCCESSOR TO ETCEMENDY, CAROLINE, ESTATE OF	8.20	
AUTOMATION INDUSTRIES, INC-HARRIS TUBE			SOLD TO MONTROSE CHEMICAL CORPORATION OF CALIFORNIA (9-28-2011)	-1.20	
SUCCESSOR TO HARRIS TUBE, INC	0.70	<u>0.70</u>	TOTAL		<u>7.00</u>
TOTAL	7.00		CARSON-MADRONA CO		
BALLMAN, ROSEMARY N	7.00		SUCCESSOR TO CHANSLOR-WESTERN OIL AND DEVELOP CO	104.00	<u>104.00</u>
SOLD TO UNITED CALIFORNIA BANK	-7.00		CENTURY BUILDERS		
TOTAL		0.00	SUCCESSOR TO UNION NURSERY, INC	4.70	4.70
BANK OF AMERICA NATIONAL TRUST AND SAVINGS ASSOCIATION (TRUST BI-51)	0.10		CHANDLERS PALOS VERDES SAND AND GRAVEL CORP		
RELEASED TO MICHAEL L ROCKWELL	-0.10		SECOND WEST COAST BASIN JUDGMENT	95.20	
TOTAL		0.00	SUCCESSOR TO SOUTHWESTERN PORTLAND CEMENT CO	15.00	
BARCLAY HOLLANDER CORP (FORMERLY BARCLAY HOLLANDER CURCI INC)			SUCCESSOR TO TORRANCE SAND AND GRAVEL CORP	184.00	
SUCCESSOR IN PART TO JOUGHIN TORRANCE RANCH	3.33		SOLD TO ROLLING HILLS COUNTRY CLUB	-290.00	
SOLD TO TORRANCE, CITY OF	-3.33		TOTAL		4.20
TOTAL		0.00	CHANSLOR-WESTERN OIL AND DEVELOPMENT CO	104.00	
BARCLAY HOLLANDER CURCI INC (NOW KNOWN AS BARCLAY HOLLANDER CORP)			(FORMERLY CHANSLOR-CANFIELD MIDWAY OIL CO)		
BARCLAY, RICHARD AND R A WATT			SOLD TO CARSON-MADRONA CO	-104.00	
SUCCESSORS TO EMMA J OSBORN	32.66		TOTAL		0.00
SUCCESSORS IN PART TO ISABELA J GRANZ ESTATE	13.55		CHEMICALS CO OF ALLIED CORP		
SUCCESSORS IN PART TO GEORGE R MURDOCK	13.75		(FORMERLY INDUSTRIAL CHEMICAL DIVISION, ALLIED CHEMICAL CORP)		
			(NOW KNOWN AS ALLIED CORP)		

CHEVRON USA INC	4,541.70		TOTAL		0.00
(FORMERLY STANDARD OIL CO OF CALIFORNIA)			ECOGAS, INC.		
SUBJECT TO LONG TERM LEASE FROM	59.60		SUCCESSOR TO BLACK, DANA	11.80	
ISABELLA GRANZ PER JUDGEMENT			SOLD TO AQUA CAPITAL MANAGEMENT LP	-11.80	
TOTAL		4,601.30	TOTAL		0.00
CHRISTIE, CLEM, DON C FOHL AND LEON LARSON	0.02		ECO SERVICES OPERATIONS LLC	521.00	
(TRUSTEES OF WILMINGTON CEMETERY ASSOC)			(FORMERLY SOLVAY USA INC.)		
ABANDONED WATER RIGHT	-0.02	0.00	TOTAL		<u>521.00</u>
TOTAL			EDISON SECURITIES CO		
CHURCHILL DOWNS CALIFORNIA CO			(NOW KNOWN AS ASSOCIATED SOUTHERN INVESTMENT CO)		
SUCCESSOR TO HOLLYWOOD PARK	282.00		EL SEGUNDO, CITY OF	953.00	953.00
OPERATING CO			ENGELSMA, JAKE		
SOLD TO HOLLYWOOD PARK LAND COMPANY, LLC	-282.00		SUCCESSOR TO WILBUR HORNSTRA	14.10	
TOTAL		0.00	SOLD TO ASAHI FANCY KOI, INC	-2.00	
CLUFF, BEN DAIRY			TRANSFERRED TO SUSAN ENGELSMA, TRUSTEE ET AL	-12.10	
SUCCESSOR TO EDWARD AND EMILY COST	7.40		TOTAL		0.00
SOLD TO AMERICAN PLANT GROWERS, INC	-7.40		ENGELSMA, SUSAN; TRUSTEE OF THE SUSAN ENGELSMA TRUST		
TOTAL		0.00	TRANSFERRED FROM JAKE ENGLESMA	12.10	<u>12.10</u>
COAST FOREST PRODUCTS			EQUILON ENTERPRISES, LLC		
SUCCESSOR TO SOUTHWEST STEEL ROLLING MILLS	3.40		SUCCESSOR TO TEXACO REFINING AND MARKETING, INC	3,432.00	
SOLD TO GEORGIA-PACIFIC CORP	-3.40		SOLD TO SHELL OIL PRODUCTS US	-3,432.00	
TOTAL		0.00	TOTAL		0.00
COASTLINE CHURCH OF CHRIST			ETCHEMENDY, CAROLINE, ESTATE OF	8.20	
SUCCESSOR TO LERMENS, EVELYN	0.70	<u>0.70</u>	SOLD TO CARSON-HARBOR VILLAGE MOBILE HOME PARK	-8.20	
COLLISTER, CAMERON			TOTAL		0.00
SUCCESSOR TO JOUGHIN TORRANCE RANCH QUITCLAIMED TO NORMANDIE PARK	-136.82		EVERGREEN AMERICA CORP		
TOTAL		0.00	SUCCESSOR TO POTHOS CORP	5.40	<u>5.40</u>
COLUMBIA BROADCASTING SYSTEM, INC			EWING, CARMELITA ROSECRANS	91.30	
(NOW KNOWN AS CBS INC)			SOLD TO SOUTHERN CALIFORNIA WATER CO	-91.30	
CONOCOPHILLIPS COMPANY			TOTAL		0.00
SUCCESSOR TO TOSCO CORPORATION (NOW KNOWN AS PHILLIPS 66 COMPANY)			EWING, NED ET AL		
COST, EDWARD AND EMILY	7.40		SUCCESSOR IN PART TO ISABEL J GRANZ	6.50	
SOLD TO BEN CLUFF DAIRY	-7.40		ESTATE		
TOTAL		0.00	SOLD TO R A WATT, INC	-6.50	
CURTIS, OWEN W	3.80		TOTAL		0.00
SOLD TO SOUTHERN CALIFORNIA WATER CO	-3.44	0.36	FLESH, LESLIE R AND ANDOR PASTERNAK, ET AL		
TOTAL		0.36	SUCCESSORS TO ALFRED D AND RUTH SEABACK	3.50	
DEL AMO ESTATE CO	121.00		SOLD TO STANLEY C LAGERLOF	-3.50	
SOLD TO DOMINGUEZ WATER CORP	-121.00		TOTAL		0.00
TOTAL		0.00	FLETCHER OIL AND REFINING CO		
DELANEY, GOLDA, ESTATE OF			(FORMERLY FLETCHER OIL CO)	86.30	
(FORMERLY ARTHUR J DELANEY)			SUCCESSOR TO FLETCHER, ROBERT G ET AL	3.70	
SUCCESSOR TO BEGO CORP	4.10	<u>4.10</u>	SOLD TO WESTERN WATER CO	-90.00	
DENNIS, ESTHER M SHEETS			TOTAL		0.00
(FORMERLY ESTHER M SHEETS)	5.50		FLETCHER, ROBERT G, DANIEL S, AND WILFRED O		
SOLD TO TORRANCE, CITY OF	-5.50		SUCCESSOR TO FRED A JUNGQUIST	3.70	
TOTAL		0.00	SOLD TO FLETCHER OIL AND REFINING CO	-3.70	
DESSER ENTERPRISES, INC.			TOTAL		0.00
SECOND WEST COAST BASIN JUDGMENT	0.00	0.00	FUJIMOTO, SAMUEL R		
SOLD TO MYRON Z. CHLAVIN AND NETTIE DESSER TRUST AND JHD PROPERTIES, LLC	-0.00	0.00	(FORMERLY KNOWN AS FUJIMOTO, SAMUEL R AND RAYMOND S)		
DOMINGUEZ ESTATE CO	254.00		SUCCESSOR IN PART TO H J AND DAISY EARLY	20.00	
SOLD TO DOMINGUEZ WATER CORP	-254.00		SOLD TO FUJIMOTO, SAMUEL R, STEVEN T AND JON T JOINT TENANTS	-20.00	
TOTAL		0.00	TOTAL		0.00
DOMINGUEZ WATER CORP			FUJIMOTO, SAMUEL R AND RAYMOND S		
(NOW KNOWN AS DOMINGUEZ WATER CO)			(SEE FUJIMOTO, SAMUEL R)		
DOMINGUEZ WATER CO	9,477.80		FUJIMOTO, SAMUEL R, STEVEN T AND JON K, JOINT TENANTS		
(FORMERLY KNOWN AS DOMINGUEZ WATER CORP)			SUCCESSOR TO FUJIMOTO, SAMUEL R	20.00	20.00
SUCCESSOR TO CARSON ESTATE CO	130.00		FULLILOVE, ROBERT L	1.00	
SUCCESSOR TO DEL AMO ESTATE CO	121.00		SOLD TO STATE OF CALIFORNIA	-1.00	
SUCCESSOR TO DOMINGUEZ ESTATE CO	254.00		TOTAL		0.00
SUCCESSOR TO DON WILSON BUILDERS	32.60		FUTURA INDUSTRIES, INC		
SUCCESSOR TO HEYDENBECK, JEANETTE R	0.70		SUCCESSOR TO SPANISH AMERICAN INSTITUTE	44.40	
SUCCESSOR TO NAKANO, KIKUNO, ET AL	19.30		SOLD TO KAUFMAN, LEO AND SHELDON BAER	-44.40	
SUCCESSOR IN PART TO H J EARLY	91.00		TOTAL		0.00
SUCCESSOR IN PART TO R A WATT, INC	61.85		GARRETT CORP, THE		
SOLD IN PART TO WATSON LAND CO	-37.60		SUCCESSOR TO SHINODA BROTHERS INC	22.50	
SUCCESSOR TO THORPE, GREGORY	11.80		TRANSFERRED TO ALLIED-SIGNAL INC (TORRANCE OFFICE)	-22.50	
DOMINGUEZ WATER CO MERGED WITH AND INTO CALIFORNIA WATER SERVICE CO, WATERMASTER ACCOUNT KNOWN AS CALIFORNIA WATER SERVICE CO (DOMINGUEZ)	-10,162.45		TOTAL		0.00
TOTAL		0.00	GATX TANK STORAGE TERMINALS CORP		
DON WILSON BUILDERS			SUCCESSOR TO PHILLIPS PETROLEUM CO	167.00	
SUCCESSORS TO KASUO, ISAMU, AND YOSHIKI R KITA	32.60		SOLD TO KINDER MORGAN LIQUIDS TERMINALS, LLC.	-167.00	
SOLD TO DOMINGUEZ WATER CORP	-32.60		TOTAL		0.00
TOTAL		0.00	GEORGIA-PACIFIC CORP		
DOUGLAS AIRCRAFT CO, INC			SUCCESSOR TO COAST FOREST PRODUCTS	3.40	
(SEE MCDONNELL DOUGLAS CORP)			SOLD TO INGLEWOOD, CITY OF	-3.40	
EARLY, H J AND DAISY	111.00		TOTAL		0.00
SOLD TO DOMINGUEZ WATER CORP	-91.00		GERAHUE LAND CO		
SOLD TO SAMUEL R AND RAYMOND S FUJIMOTO	-20.00		SUCCESSOR AND ASSIGNEE FOR A S	11.90	

JOHNSTON DRILL CO			THE CORP NAME CHANGED TO HONEYWELL	
ABANDONED WATER RIGHT	-11.90		INTERNATIONAL INC	277.50
TOTAL		0.00	SOLD IN PART TO CALIFORNIA WATER	-255.00
GILLINGHAM, FLORENCE R, ET AL	2.40	2.40	SERVICE CO (DOMINGUEZ)	
GOLDEN STATE WATER COMPANY			TOTAL	22.50
SUCCESSOR TO SOUTHERN CALIFORNIA			HONOLD, KRISTIN BRANDSMA	
WATER COMPANY (NAME CHANGE)	7,502.24	<u>7,502.24</u>	SUCCESSOR IN PART TO ESTATE OF JOHN	11.80
GONZALES, FELIPE AND GABRIELA			GRANT	11.80
(NOW KNOWN AS GONZALES, GABRIELA AND			HORNSTRA, WILBUR	14.10
MARIA R)			SOLD TO JAKE ENGELSMA	-14.10
GONZALES, GABRIELA AND MARIA R			TOTAL	0.00
(FORMERLY GONZALES, FELIPE AND	34.30		HUGHES AIRCRAFT	0.00
GABRIELA)		0.00	(SEE 1981 JUDGMENT ORDER)	0.00
SOLD TO TORRANCE, CITY OF	-34.30		HUNT, DONALD G	
TOTAL		0.00	SUCCESSOR TO JAMES SCANDA	1.90
GRAND LAND CO			SOLD TO KENICHI INOSE	-1.90
SUCCESSOR IN PART TO SMITH, A H, ET AL	5.70		TOTAL	0.00
ABANDONED WATER RIGHTS 1961-62	-5.70		INDUSTRIAL CHEMICAL DIVISION, ALLIED CHEMICAL	
TOTAL		0.00	CORP	
GRANT, JOHN, ESTATE OF	59.00		(FORMERLY ALLIED CHEMICAL CORP, GEN	
APPORTIONED IN PART TO BLACK, DANA	-11.80		CHEMICAL CO)	
APPORTIONED IN PART TO BRANDSMA,	-11.80		(NOW KNOWN AS ALLIED CORP)	
MAYNARD			INGLEWOOD, CITY OF	4,382.00
APPORTIONED IN PART TO HONOLD, KRISTIN	-11.80		SUCCESSOR TO ABELL, FRANK	1.80
BRANDSMA			SUCCESSOR TO BOISE CASCADE BUILDING	16.92
APPORTIONED IN PART TO THORPE,	-11.80		CO	
GREGORY			SUCCESSOR TO GEORGIA-PACIFIC CORP	3.40
APPORTIONED IN PART TO THORPE,	-11.80		SUCCESSOR TO KAUFMAN, LEO AND	44.40
TERRENCE			SHELDON BAER	
TOTAL		0.00	SUCCESSOR IN PART TO GEORGE R	1.37
GRANZ, ISABELA J	380.00		MURDOCK	
PARTITIONED TO HEIRS:			TOTAL	4,449.89
ISABELA J GRANZ ESTATE	-33.80		INOSE ET AL	
JOUGHIN TORRANCE RANCH	-212.42		(KEN K INOSE, KAY K INOSE, KIYOKO YOSHIYAMA,	
GEORGE R MURDOCK	-15.12		KENICHI INOSE, KAYOKO K INOSE AND	
EMMA J OSBORN	-32.66		DAVID T NAKATANI, TRUSTEE OF THE INOSE CHILDREN	
SUBJECT TO LONG TERM LEASE TO:	-59.60		TRUST U/D/T DATE 11/1/78)	
STANDARD OIL CO OF CALIF			(FORMERLY INOSE, KENICHI)	
SUPERIOR OIL CO	-26.40		SUCCESSOR TO HUNT, DONALD G	1.90
TOTAL		0.00	SUCCESSOR TO THAXTER, RALPH AND LOIS A	3.50
GRANZ, ISABELA J, ESTATE OF			LENOIR	
SUCCESSOR IN PART TO ISABELA J GRANZ	33.80		SOLD TO POTHOS CORP	-5.40
SOLD IN PART TO RICHARD BARCLAY AND R A	-13.55		TOTAL	0.00
WATT			INOSE, KENICHI	
SOLD IN PART TO NED EWING, ET AL	-6.50		(NOW KNOWN AS INOSE ET AL)	
SOLD IN PART TO R A WATT, INC	-13.75		JENKINS, HARRY C	
TOTAL		0.00	SUCCESSOR TO H L PERRY	1.80
HARRIS, R AND L			SOLD TO ABC NURSERY, INC	-1.80
SUCCESSOR TO LAWRENCE I LISTON	0.70		TOTAL	0.00
DISCLAIMED WATER RIGHT	-0.70		JOHNS-MANVILLE PRODUCTS CORP	
TOTAL		0.00	(SEE JOHNS-MANVILLE SALES CORP)	
HARRIS TUBE, INC			JOHNS-MANVILLE SALES CORP	
SUCCESSOR IN PART TO B ROBINSON AND	0.70		(FORMERLY: JOHNS-MANVILLE PRODUCTS CORP	
ASSOCIATES			MANVILLE SERVICE CORP)	
TRANSFERRED TO AUTOMATION IND INC-	-0.70		(NOW KNOWN AS MANVILLE SALES CORP)	
HARRIS TUBE			TOTAL	0.00
TOTAL		0.00	JOHNSTON, A S, DRILLING CO	11.90
HAWTHORNE, CITY OF	1,882.00	1,882.00	ASSIGNED TO GERAHUE LAND CO	-11.90
HENDERSON, BEATRICE M	1.30		TOTAL	0.00
ABANDONED WATER RIGHT	-1.30		JONES, ANNA MAE	50.20
TOTAL		0.00	SOLD TO CITY OF TORRANCE	-50.20
HEYDENBECK, JEANETTE R			TOTAL	0.00
(FORMERLY JEANETTE R REIFSNYDER)	0.70		JOUGHIN TORRANCE RANCH	
SOLD TO DOMINGUEZ WATER CORP	-0.70		SUCCESSOR IN PART TO ISABELA J GRANZ	212.42
TOTAL		0.00	SOLD IN PART TO BARCLAY HOLLANDER	-3.33
HILLSIDE MEMORIAL PARK	16.70		CURCI INC	
SUCCESSOR TO SANTA FE LAND	39.50		SOLD IN PART TO BOISE CASCADE BUILDING	-16.92
IMPROVEMENT CO			CO	
SUCCESSOR TO SIGMUND S AND LIONEL S	12.50		SOLD IN PART TO COLLISTER, CAMERON	-136.82
HOCKWALD			SOLD IN PART TO R A WATT, INC	-55.35
SUCCESSOR TO THORPE, TERRENCE	11.80		TOTAL	0.00
SUCCESSOR TO BRANDSMA, MAYNARD	11.80		JUNGQUIST, FRED A	
TOTAL		<u>92.30</u>	(FORMERLY KATHERINE P WOODMAN)	3.70
HOCKWALD, SIGMUND S AND LIONEL S	12.50		SOLD TO ROBERT G FLETCHER ET AL	-3.70
SOLD TO HILLSIDE MEMORIAL PARK	-12.50		TOTAL	0.00
TOTAL		0.00	KAHLERT, ET AL	
HOLLYWOOD PARK INC			AND SUCCESSOR IN PART TO KELLY PIPE CO	18.90
(FORMERLY HOLLYWOOD TURF CLUB)			SOLD TO SPARKLETTS DRINKING WATER	-18.90
(NOW KNOWN AS HOLLYWOOD PARK OPERATING CO)			CORP	
HOLLYWOOD PARK LAND COMPANY,LLC			TOTAL	0.00
SUCCESSOR TO CHURCHILL DOWNS	282.00	<u>282.00</u>	KAUFMAN, LEO AND SHELDON BAER	
CALIFORNIA COMPANY			SUCCESSOR TO FUTURA INDUSTRIES INC	44.40
HOLLYWOOD PARK OPERATING CO			SOLD TO CITY OF INGLEWOOD	-44.40
(FORMERLY HOLLYWOOD PARK INC)	282.00		TOTAL	0.00
SOLD TO CHURCHILL DOWNS CALIFORNIA CO	-282.00		KELLY PIPE CO	49.00
TOTAL		0.00	SOLD IN PART TO STATE OF CALIFORNIA	-16.30
HOLLYWOOD TURF CLUB			SOLD IN PART TO KAHLERT, ET AL	-18.90
(NOW KNOWN AS HOLLYWOOD PARK INC)			SOLD IN PART TO SPARKLETTS DRINKING	-13.80
HONEYWELL INTERNATIONAL INC			WATER CORP	
MERGED WITH ALLIED-SIGNAL INC (EL			TOTAL	0.00
SEGUNDO AND TORRANCE OFFICES) AND			KINDER MORGAN LIQUIDS TERMINALS, LLC.	

West Coast Basin Watermaster

SUCCESSOR TO GATX TANK STORAGE TERMINALS CORP.	167.00	167.00	MARTIN BROTHERS BOX CO, INC	3.40	
			SOLD TO SOUTHWEST STEEL ROLLING MILLS	-3.40	
			TOTAL		0.00
<i>KITA, ISAMU, KASUO, AND YOSHIKI R</i>	32.60		MAYFLOWER NURSERIES	0.00	<u>0.00</u>
SOLD TO DON WILSON BUILDERS	-32.60		(HERBERT SAKAYE FUKUWAI, DBA)		
TOTAL		0.00	MCCANDLESS, JAMES	6.70	
KURTZ, GLADYS	3.50		SOLD TO SPARKLETTS DRINKING WATER	-6.70	
SOLD TO SPARKLETTS DRINKING WATER	-3.50		CORP		
TOTAL		0.00	TOTAL		0.00
LAGERLOF, STANLEY C			MCDONNELL DOUGLAS CORP		
SUCCESSOR TO LESLIE R FLESCH AND	3.50		(FORMERLY DOUGLAS AIRCRAFT, CO INC)		
ANDOR PASTERNAK, ET AL			LONG TERM LEASE FROM UNITED STATES	1.70	<u>1.70</u>
SOLD TO SHELL OIL CO	-3.50		NAVY DEPARTMENT		
TOTAL		0.00	MOBIL OIL CORP		
LAWLER, JAMES K	3.10		(FORMERLY SOCONY MOBIL OIL CO)	2,570.00	
SOLD TO B ROBINSON AND ASSOC	-3.10		SUCCESSOR TO SUPERIOR OIL CO	26.40	
TOTAL		0.00	TOTAL		<u>2,596.40</u>
LERMENS, EVELYN			MONETA MUTUAL WATER CO	916.00	
(FORMERLY LERMENS, ALFRED)	0.70		SOLD TO CITY OF TORRANCE	-916.00	
SOLD TO COASTLINE CHURCH OF CHRIST	-0.70		TOTAL		0.00
TOTAL		0.00	MONIZ, JOE JR	2.20	
LEUZINGER, EMMA L	1.40	<u>1.40</u>	SOLD TO STATE OF CALIFORNIA	-2.20	
LISTON, LAWRENCE	0.70		TOTAL		0.00
SOLD TO R AND L HARRIS	-0.70		MONTROSE CHEMICAL CORPORATION OF		
TOTAL		0.00	CALIFORNIA		
LITTLE, WILLIAM			SUCCESSOR TO CARSON-HARBOR VILLAGE	1.20	<u>1.20</u>
SUCCESSOR TO ROCKWELL, MICHAEL	0.10		MOBILE HOME PARK (9-28-2011)		
SOLD TO WATT INDUSTRIAL PROPERTIES	-0.10		MORAN, RONALD E		
TOTAL		0.00	SUCCESSOR IN PART TO COLUMBIA	9.00	
LOMITA, CITY OF WATER SYSTEM (WWD 13)	1,352.00	<u>1,352.00</u>	BROADCASTING SYSTEM, INC		
(FORMERLY LOS ANGELES COUNTY			SOLD TO CITY OF TORRANCE	-9.00	
WATERWORKS DISTRICT NO 13)			TOTAL		0.00
LONG BEACH, CITY OF	0.70	0.70	MORI, ROY H AND KENJI		
LOPES, FRANK	3.70	3.70	SECOND WEST COAST BASIN JUDGMENT	5.60	
LOS ANGELES, CITY OF	1,503.00	<u>1,503.00</u>	SOLD TO NOZAKI, SUMIKICHI	-2.00	
LOS ANGELES COUNTY-ALONDRA PARK	28.70		TOTAL		<u>3.60</u>
SUCCESSOR TO LOS ANGELES COUNTY	39.00		MURDOCK, GEORGE R		
FLOOD CONTROL DIST			SUCCESSOR IN PART TO ISABELA J GRANZ	15.12	
MERGED WITH LOS ANGELES COUNTY	-67.70		SOLD IN PART TO R BARCLAY AND R A WATT	-13.75	
CHESTER L. WASHINGTON GOLF COURSE			SOLD IN PART TO CITY OF INGLEWOOD	-1.37	
UNDER NEW NAME "LOS ANGELES COUNTY			TOTAL		0.00
RECREATION FACILITIES"			MYRON Z. CHLAVIN AND NETTIE DESSER TRUST		
TOTAL		0.00	AND JHD PROPERTIES, LLC		
LOS ANGELES COUNTY CHESTER L WASHINGTON			SUCCESSOR TO DESSER ENTERPRISES, INC.	0.00	<u>0.00</u>
GOLF COURSE			NAKANO, KIKUNO, ET AL	19.30	
(FORMERLY LOS ANGELES COUNTY	296.00		SOLD TO DOMINGUEZ WATER CORP	-19.30	
WESTERN AVENUE GOLF COURSE)			TOTAL		0.00
MERGED WITH LOS ANGELES COUNTY	-296.00		NAVARRO, T C	53.90	
ALONDRA PARK UNDER NEW NAME "LOS			SOLD TO HILARIO S AND EMMA ALWAG	-53.90	
ANGELES COUNTY RECREATION FACILITIES"			TOTAL		0.00
TOTAL		0.00	NORAIR, A DIVISION OF NORTHROP CORP		
LOS ANGELES COUNTY FLOOD CONTROL	37.60		(FORMERLY KNOWN AS NORTHROP AIRCRAFT, INC)		
DISTRICT			(NOW KNOWN AS NORTHROP CORP)		
SUCCESSOR IN PART TO A H SMITH, ET AL	1.40		NORMANDIE PARK		
SOLD TO LOS ANGELES COUNTY - ALONDRA	-39.00		SUCCESSOR TO COLLISTER, CAMERON	136.82	
PARK			SOLD TO CITY OF TORRANCE	-136.82	
TOTAL		0.00	TOTAL		0.00
LOS ANGELES COUNTY RECREATION FACILITIES			NORTHROP CORP		
MERGER OF LOS ANGELES COUNTY ALONDRA	67.70		(FORMERLY KNOWN AS NORAIR, A DIV OF	38.15	<u>38.15</u>
PARK, AND			NORTHROP CORP)		
LOS ANGELES COUNTY CHESTER L.	296.00		NOZAKI, SUMIKICHI		
WASHINGTON GOLF COURSE			SUCCESSOR IN PART TO MORI, ROY H AND	2.00	
TOTAL		363.70	KENJI		
LOS ANGELES COUNTY SANITATION DIST NO 2	102.00	<u>102.00</u>	SUCCESSOR IN PART TO UNITED CALIFORNIA	5.00	
LOS ANGELES COUNTY WATERWORKS DISTRICT NO 13			BANK		
(NOW KNOWN AS LOMITA, CITY OF WATER			TOTAL		7.00
SYSTEM WWD 13)			OSBORN, EMMA J		
LOS ANGELES COUNTY WATERWORKS DISTRICT	551.00		SUCCESSOR IN PART TO ISABELA J GRANZ	32.66	
NO 22			SOLD TO R BARCLAY AND R A WATT	-32.66	
SOLD TO SOUTHERN CALIF WATER CO	-551.00		TOTAL		0.00
TOTAL		0.00	OTANI, CHISATO	0.00	<u>0.00</u>
LOS ANGELES COUNTY WESTERN AVE GOLF COURSE			PACIFIC CREST CEMETERY CO	17.70	
(FORMERLY BOARD OF RETIREMENT OF THE LOS			SUCCESSOR TO H S SCOTT	9.50	
ANGELES COUNTY EMPLOYEES RETIREMENT			SUCCESSOR TO WADA, KAORU AND SATORU	12.20	
SYSTEM)			TOTAL		<u>39.40</u>
(NOW KNOWN AS LOS ANGELES CHESTER L			PALOS VERDES BEGONIA FARM		
WASH GOLF)			SUCCESSOR TO GUS A BAUMAN	0.00	<u>0.00</u>
LOYOLA MARYMOUNT UNIVERSITY			PALOS VERDES WATER CO	999.00	
(FORMERLY LOYOLA UNIVERSITY OF LOS	48.10	<u>48.10</u>	SOLD TO CALIFORNIA WATER SERVICE CO	-999.00	
ANGELES)			TOTAL		0.00
MANHATTAN BEACH, CITY OF	1,131.20	1,131.20	PARK WATER CO	160.00	
MANVILLE SALES CORP	881.00		SOLD TO SOUTHERN CALIFORNIA WATER	-160.00	
(FORMERLY: JOHNS-MANVILLE SALES CORP			TOTAL		0.00
JOHNS-MANVILLE PRODUCTS			PARKE, ZORAIDA	1.80	
CORP MANVILLE SERVICE)			SOLD TO H L PERRY	-1.80	
SOLD TO ATLANTIC RICHFIELD CO	-881.00		TOTAL		0.00
TOTAL		0.00	PASCHKE, WILLIAM JOSEPH	0.02	
MANVILLE SERVICE CORP			ABANDONED WATER RIGHT	-0.02	
(SEE JOHNS-MANVILLE SALES CORP)			TOTAL		0.00
			PERRY, H L		

SUCCESSOR TO ZORAIDA PARKE	1.80		TOTAL		1,019.50
SOLD TO HARRY C JENKINS	-1.80		SHELL OIL PRODUCTS US		
TOTAL		0.00	SUCCESSOR TO EQUILON ENTERPRISES, LLC	3,432.00	
PHILLIPS 66 COMPANY			SOLD TO TESORO REFINING AND MARKETING		
(FORMERLY CONOCOPHILLIPS COMPANY)	6,170.00		COMPANY	-3,432.00	
PHILLIPS PETROLEUM CO			TOTAL		0.00
(FORMERLY TIDEWATER OIL CO)	167.00		SHINODA BROTHERS, INC		
SOLD TO GATX TANK STORAGE TERM CORP	-167.00		SECOND WEST COAST BASIN JUDGMENT	22.50	
TOTAL		6,170.00	SOLD TO GARRETT CORP, THE	-22.50	
POTHOS CORP			TOTAL		0.00
SUCCESSOR TO INOSE ET AL	5.40		SMITH, A H,(SAM SURBER AND FRED A SMITH)	9.70	
SOLD TO EVERGREEN AMERICA CORP	-5.40		SOLD IN PART TO STATE OF CALIFORNIA	-2.60	
TOTAL		0.00	SOLD IN PART TO GRAND LAND CO	-5.70	
REHOR, JOSEPHINE P	2.20	2.20	SOLD IN PART TO L A CO FLOOD CONTROL	-1.40	
REIFSNYDER, JEANETTE R			DISTRICT		
(NOW KNOWN AS JEANNETTE R HEYDENBECK)			TOTAL		0.00
RHODIA, INC			SOCONY MOBIL OIL CO		
(NOW KNOWN AS SOLVAY USA INC.)			(SEE MOBIL OIL CO)	10.40	
SUCCESSOR TO RHONE-POULENC INC			SOLVAY USA INC.		
RHONE-POULENE BASIC CHEMICALS CO			(NOW KNOWN AS ECO SERVICES		
SUCCESSOR TO STAUFFER CHEMICAL CO	521.00		OPERATIONS LLC)		
SOLD TO RHONE-POULENE INC	-521.00		SOUTHERN CALIFORNIA EDISON CO		
TOTAL		0.00	SUCCESSOR TO ASSOCIATED SOUTHERN	46.70	
			INVESTMENT CO		
RHONE-POULENC INC			TOTAL		57.10
SUCCESSOR TO RHONE-POULENC, BASIC	521.00		SOUTHERN CALIFORNIA WATER CO	6,265.30	
CHEMICALS CO			SUCCESSOR TO EWING, CARMELITA	91.30	
SOLD TO RHODIA, INC	-521.00		ROSECRAINS		
TOTAL		0.00	SUCCESSOR TO LOS ANGELES COUNTY	551.00	
RICHFIELD OIL CORP			WATERWORKS DIST NO 22		
(NOW KNOWN AS ATLANTIC RICHFIELD CO)			SUCCESSOR TO PARK WATER CO	160.00	
ROBINSON, B. AND ASSOCIATES			SUCCESSOR TO RYAN AERONAUTICAL CO	20.20	
SUCCESSOR TO JAMES K LAWLER	3.10		SUCCESSOR TO SOUTHERN PACIFIC CO	166.00	
SOLD IN PART TO HARRIS TUBE, INC	-0.70		SUCCESSOR IN PART TO OWEN W CURTIS	3.44	
SOLD IN PART TO SOUTHERN CALIFORNIA	-2.40		SUCCESSOR IN PART TO B ROBINSON AND	2.40	
WATER CO			ASSOCIATES		
TOTAL		0.00	SUCCESSOR TO WESTERN WATER SERVICE	242.60	
ROCKWELL, MICHAEL L			COMPANY		
SUCCESSOR TO BANK OF AMERICA NATIONAL	0.10		NAME CHANGE TO GOLDEN STATE WATER	-7,502.24	
TRUST AND SAVINGS ASSOCIATION (TRUST B			COMPANY		
1-51)			TOTAL		0.00
SOLD TO LITTLE, WILLIAM	-0.10		SOUTHERN PACIFIC CO	166.00	
TOTAL		0.00	SOLD TO SO CALIFORNIA WATER CO	-166.00	
RODRIGUEZ, FLAVIO	6.10		TOTAL		0.00
SOLD TO STATE OF CALIFORNIA	-4.00		SOUTHERN WESTERN PORTLAND CEMENT		
DISCLAIMED WATER RIGHT	-2.10		COMPANY	15.00	
TOTAL		0.00	SOLD TO CHANDLERS PALOS VERDES AND		
ROMAN CATHOLIC ARCHBISHOP OF LOS	72.30	72.30	GRAVEL CORP	-15.00	
ANGELES (HOLY CROSS CEMETERY)			TOTAL		0.0
ROLLING HILLS COUNTRY CLUB			SOUTHWEST STEEL ROLLING MILLS		
SUCCESSOR TO CHANDLERS PALOS VERDES	290.00		SUCCESSOR TO MARTIN BROTHERS BOX CO,	3.40	
SAND AND GRAVEL CORP.			INC		
TOTAL		290.00	SOLD TO COAST FOREST PRODUCTS	-3.40	
RUFFNER CORP			TOTAL		0.00
SUCCESSOR TO LOUIS M SEPULVEDA	0.70		SPANISH AMERICAN INSTITUTE	44.40	
ABANDONED WATER RIGHT	-0.70		SOLD TO FUTURA INDUSTRIES, INC	-44.40	
TOTAL		0.00	TOTAL		0.00
RYAN AERONAUTICAL CO	20.20		SPARKLETTS DRINKING WATER CORP		
SOLD TO SOUTHERN CALIFORNIA WATER CO	-20.20		SUCCESSOR TO ANDERSON, REMBERT C, ET	80.50	
TOTAL		0.00	AL		
SANTA FE LAND IMPROVEMENT CO	39.50		SUCCESSOR TO CALIFORNIA, STATE OF	26.10	
SOLD TO HILLSIDE MEMORIAL PARK	-39.50		SUCCESSOR TO KAHLERT, ET AL	18.90	
TOTAL		0.00	SUCCESSOR TO KURTZ, GLADYS	3.50	
SCANDA, JAMES AND GEORGE NASSIN	1.90		SUCCESSOR TO MCCANDLESS, JAMES	6.70	
SOLD TO DONALD G HUNT	-1.90		SUCCESSOR TO WECHSLER, B A	3.10	
TOTAL		0.00	SUCCESSOR IN PART TO KELLY PIPE CO	13.80	
SCHLAEGEL, KEITH W AND OPAL B	13.60		SOLD TO WESTERN WATER CO	-152.60	
SOLD TO SIDNEY R AND CHARLOTTE W TITLE	-13.60		TOTAL		0.00
TOTAL		0.00	STANDARD OIL CO OF CALIFORNIA		
SCOTT, H S			(NOW KNOWN AS CHEVRON U S A, INC)		
SUCCESSOR TO W F BURKE AND LOIS PRICE	9.50		STAUFFER CHEMICAL CO	521.00	
QUITCLAIMED TO PACIFIC CREST CEMETERY	-9.50		SOLD TO RHONE-POULENC BASIC CHEMICALS	-521.00	
CO			CO		
TOTAL		0.00	TOTAL		0.00
SEABACK, ALFRED D AND RUTH	3.50		SUNRISE GROWERS, INC		
SOLD TO LESLIE R FLESH AND OR	-3.50		SUCCESSOR TO AMERICAN PLANT GROWERS	10.00	
PASTERNAK, ET AL			INC		
TOTAL		0.00	SOLD TO AMERICAN PLANT GROWERS, INC	-10.00	
SEPULVEDA, LOUIS M	0.70		TOTAL		0.00
ACQUIRED BY RUFFNER CORP	-0.70		SUPERIOR OIL CO		
TOTAL		0.00	SUBJECT TO LONG TERM LEASE FROM	26.40	
SHEETS, ESTHER M			ISABELA J GRANZ		
(FORMERLY CLYDE L SHEETS)			SOLD TO MOBIL OIL CORP	-26.40	
(SEE DENNIS, ESTHER M SHEETS)			TOTAL		0.00
SHELL OIL CO	4,516.00		SWICK, PEGGY	5.50	
SUCCESSOR TO LAGERLOF, STANLEY C	3.50		SOLD TO HILARIO AND EMMA ALWAG	-5.50	
SOLD IN PART TO UNION OIL CO OF CAL	-1,974.00		TOTAL		0.00
SOLD IN PART TO UNION OIL CO OF CAL	-1,526.00		TESORO REFINING AND MARKETING COMPANY		
			SUCCESSOR TO SHELL OIL PRODUCTS US		

West Coast Basin Watermaster

(NOW KNOWN AS TESORO REFINING & MARKETING COMPANY LLC)			TOTAL		0.00
TESORO REFINING & MARKETING COMPANY LLC			VERBURG, WILLIAM AND CLARA B	6.70	
(FORMERLY TESORO REFINING AND MARKETING COMPANY)	3,432.00		SOLD TO ABC NURSERY, INC	-6.70	
SUCCESSOR TO ATLANTIC RICHFIELD COMPANY (6-13-2013)	5,309.00	8,741.00	TOTAL		0.00
			VUKELICH MIKE, JR.		
			SUCCESSOR TO AMERICAN PLANT GROWERS, INC.	10.00	<u>10.00</u>
			TOTAL	12.20	
TEXACO, INC			WADA, KAORU AND SATORU		
(NOW KNOWN AS TEXACO REFINING AND MARKETING, INC)			SOLD TO PACIFIC CREST CEMETERY CO	-12.20	
TEXACO REFINING AND MARKETING, INC	3,432.00		TOTAL		0.00
(FORMERLY: TEXACO, INC)			WATKINSON, JOSEPHINE	3.10	
SOLD TO EQUILON ENTERPRISES, LLC	-3,432.00		SOLD TO MATES TUNE, ET AL	-3.10	
TOTAL		0.00	TOTAL		0.00
THAXTER, RALPH AND LOIS A LENOIR	3.50		WATSON LAND CO	42.60	
SOLD TO KENICHI INOSE	-3.50		SUCCESSOR IN PART TO DOMINGUEZ WATER CORP	37.60	
TOTAL		0.00	TOTAL		<u>80.20</u>
THORPE, GREGORY			WATT INDUSTRIAL PROPERTIES		
SUCCESSOR IN PART TO ESTATE OF JOHN GRANT	11.80		SUCCESSOR TO WILLIAM LITTLE	0.10	<u>0.10</u>
SOLD TO DOMINGUEZ WATER CORP	-11.80		WATT, R A, INC		
TOTAL		0.00	SUCCESSOR TO NED EWING, ET AL	6.50	
THORPE, TERRENCE			SUCCESSOR IN PART TO ISABELA J GRANZ ESTATE	13.75	
SUCCESSOR IN PART TO ESTATE OF JOHN GRANT	11.80		SUCCESSOR IN PART TO JOUGHIN TORRANCE RANCH	55.35	
SOLD TO HILLSIDE MEMORIAL PARK	-11.80		SOLD TO DOMINGUEZ WATER CORP	-61.85	
TOTAL		0.00	SOLD TO CITY OF TORRANCE	-13.75	
TIDEWATER OIL CO			TOTAL		0.00
(SEE PHILLIPS PETROLEUM CO)			WECHSLER, B A		
TITLE, SIDNEY R AND CHARLOTTE W			SUCCESSOR TO MATES TUNE, ET AL	3.10	
SUCCESSOR TO KEITH W AND OPAL B SCHLAEGE L	13.60		SOLD TO SPARKLETTS DRINKING WATER CORP	-3.10	
SOLD TO ABC NURSERY, INC	-13.60		TOTAL		0.00
TOTAL		0.00	WESTERN WATER CO		
TORRANCE, CITY OF	2,519.00		SUCCESSOR TO FLETCHER OIL AND REFINING CO	90.00	
SUCCESSOR TO BARCLAY HOLLANDER CORP	3.33		SUCCESSOR TO SPARKLETTS DRINKING WATER CORP	152.60	
SUCCESSOR TO BARCLAY, RICHARD AND WATT, R A	59.96		SOLD TO WESTERN WATER SERVICES CO	-242.60	
SUCCESSOR TO BELVIDERE MUTUAL WATER CO	33.40		TOTAL		0.00
SUCCESSOR TO DENNIS, ESTHER M SHEETS	5.50		WESTERN WATER SERVICES CO *		
SUCCESSOR TO ALCAST FOUNDRY ET AL	7.20		SUCCESSOR TO WESTERN WATER CO.	242.60	
SUCCESSOR TO GONZALES, GABRIELA AND MARIA R	34.30		SOLD TO SOUTHERN CALIFORNIA WATER COMPANY	-242.60	
SUCCESSOR TO JONES, ANNA MAE	50.20		TOTAL		<u>0.00</u>
SUCCESSOR TO MONETA WATER CO	916.00		WESTON INVESTMENT CO	184.00	
SUCCESSOR TO MORAN, RONALD E	9.00		SOLD TO TORRANCE SAND AND GRAVEL CORP	-184.00	
SUCCESSOR TO NORMANDIE PARK	136.82		TOTAL		0.00
SUCCESSOR TO TORRANCE UNIFIED SCHOOL DISTRICT	59.40		WISEBURN SCHOOL DISTRICT	8.20	<u>8.20</u>
SUCCESSOR TO UNITED STATES STEEL CORP	1,791.00		WOODMAN, KATHERINE P		
SUCCESSOR TO WATT, R A, INC	13.75		(SEE FRED A JUNGQUIST)		
TOTAL		5,638.86	ZEIGLER, MAXWELL T	0.00	<u>0.00</u>
TORRANCE SAND AND GRAVEL CORP					
SUCCESSOR TO WESTON INVESTMENT CO	184.00		GRAND TOTAL	64,468.25	64,468.25
SOLD TO CHANDLERS PALOS VERDES SAND AND GRAVEL CORP	-184.00				
TOTAL		0.00			
TORRANCE UNIFIED SCHOOL DISTRICT					
SUCCESSOR TO HILARIO S AND EMMA ALWAG	59.40				
SOLD TO CITY OF TORRANCE	-59.40				
TOTAL		0.00			
TOSCO CORP					
SUCCESSOR TO UNION OIL CO OF CALIF MERGED INTO CONOCOPHILLIS COMPANY	6,170.00				
TOTAL	-6,170.00				
TUNE, MATES, ET AL					
SUCCESSOR TO JOSEPHINE WATKINSON	3.10				
SOLD TO B A WECHSLER	-3.10				
TOTAL		0.00			
UNION NURSERY, INC					
SECOND WEST COAST BASIN JUDGMENT	4.70				
SOLD TO CENTURY BUILDERS	-4.70				
TOTAL		0.00			
UNION OIL CO OF CALIFORNIA	2,670.00				
SUCCESSOR IN PART TO SHELL OIL CO	1,974.00				
SUCCESSOR IN PART TO SHELL OIL CO	1,526.00				
SOLD TO TOSCO CORP	-6,170.00				
TOTAL		0.00			
UNITED CALIFORNIA BANK					
SUCCESSOR TO BALLMAN, ROSEMARY N	7.00				
SOLD TO A B C NURSERY, INC	-2.00				
SOLD TO NOZAKI, SUMIKICHI	-5.00				
TOTAL		0.00			
UNITED STATES NAVY DEPARTMENT	1.70				
LONG TERM LEASE TO MCDONNELL DOUGLAS CORP PER JUDGEMENT	-1.70				
TOTAL		0.00			
UNITED STATES STEEL CORP	1,791.00				
SOLD TO TORRANCE, CITY OF	-1,791.00				

**WEST COAST BASIN JUDGMENT-1961
SECOND WEST COAST BASIN JUDGMENT
CURRENT WATER RIGHT HOLDERS**

* WESTERN WTR. SERV.CO. - PARTY WITH ZERO ADJUDICATED RIGHTS FOR THE DURATION OF LONG TERM LEASE AGREEMENT WITH CHEVRON (ENDED JUNE 30, 2013)

Appendix C

Parties to the Judgment

June 2017

ABC Nursery, Inc
Aqua Capital Management LP
Asahi Fancy Koi, Inc.
Atlantic Richfield Company
Automation Industries, Inc.
CBS, Inc.
California Water Service Company
California Water Service Company (Dominguez)
California Water Service Company (Hawthorne Lease)
Carson-Harbor Village Mobile Home Park
Carson-Madrona Company
Century Builders
Chandler's Palos Verdes Sand & Gravel Company
Chevron USA, Inc
Coastline Church of Christ
Curtis, Owen W.
Delaney, Golda, Estate of
El Segundo, City of
Engelsma, Susan Trust
Evergreen America Corp.
Fujimoto, S.R., S.T. & J.K.
Gillingham, Florence R., et al.
Golden State Water Company
Hawthorne, City of
Hillside Memorial Park
Hollywood Park Land Company, LLC
Honeywell International, Inc.
Honold, Kristin Brandsma
Hughes Aircraft Company
Inglewood, City of
Inglewood Park Cemetery
Kinder Morgan Liquids Terminals, LLC
Leuzinger, Emma L. Estate of
Lomita, City of Water System
Long Beach, City of
Lopes, Frank
Los Angeles, City of
Los Angeles County Recreation Facilities
Los Angeles County Sanitation District 2
Loyola Marymount University
Manhattan Beach, City of
Mayflower Nurseries
McDonnell Douglas Corporation
Torrance Refining Co.
Montrose Chemical Corporation
Mori, Roy H. and Kenji
Myron Z. Chlavin & Nettie Desser Trust & JHD Pr.
Northrop Corporation
Nozaki, Sumikichi
Pacific Crest Cemetery Company
Palos Verdes Begonia Farm
Phillips 66 Company
Rehor, Josephine P.
Eco Services Operation, LLC
Rolling Hills Country Club
Rolling Hills Vista
Roman Catholic Archbishop of Los Angeles
Shell Oil Company
Southern California Edison Company
Tesoro Refining and Marketing Company
Torrance, City of
Vukelich, Mike Jr.
Watson Land Company
Watt Industrial Properties
Western Water Service Company
Wiseburn School District
Zeigler, Maxwell T.

