

# WATERMASTER SERVICE

## IN THE WEST COAST BASIN - LOS ANGELES COUNTY

July 1, 2015 - June 30, 2016

March 2017



## WEST COAST BASIN WATERMASTER

### WEST COAST BASIN WATER RIGHTS PANEL

Prepared by the Administrative Body



This report is available at [www.wrd.org](http://www.wrd.org)

Printed copies are available.

Send requests to:

[watermaster@wrdd.org](mailto:watermaster@wrdd.org)

# WATERMASTER SERVICE

IN THE WEST COAST BASIN  
LOS ANGELES COUNTY

July 1, 2015 - June 30, 2016

March 2017

**WEST COAST BASIN  
WATER RIGHTS PANEL**



Prepared by

Water Replenishment District of Southern California

West Coast Basin Administrative Body

for the

West Coast Basin Watermaster Water Rights Panel

Adopted on

March 7, 2017

# Contents

<b>Summary of Pertinent Data</b>	1
<b>Introduction</b>	2
<b>Water Use</b>	
A. Adjudicated Rights Extractions by Parties	3
B. Groundwater Storage Activity by Parties	3
C. Excess Production	3
D. Extractions by Nonparties	4
E. Extractions of Contaminated Groundwater	4
F. Adjudicated Rights Transfers	4
G. Exchange Pool	4
H. Status of Extraction Wells	5
I. Meter Testing Program	5
<b>Water Supply</b>	
A. Precipitation	6
B. Groundwater Recharge	6
C. In-Lieu Replenishment	6
D. Imported Water	6
E. Quality of Imported Water	7
F. Recycled Water	7
G. Total Water Use	7
H. Exported Water	7
I. Seawater Intrusion Barrier Projects	7
J. Groundwater Levels	8
<b>Watermaster Administrative Costs and Budget</b>	9

# Tables/Figures

1	Water Rights Accounting	10
2	Storage Accounting	12
3	Water Put Into Storage	13
4	Water Extracted from Storage	13
5	Storage Transfers	13
6	Historic Storage	13
7	Overextractions	14
8	Extractions by Nonparties	14
9	Non-Consumptive Water Use Permits	14
10	Adjudicated Rights Transfers	15
11	Sales and Purchases	16
12	Exchange Pool	17
13	Wells Completed	17
14	Wells Destroyed	17
15	Replenishment Operations	17
16	Imported Water Use	18
17	Recycled Water Use	19
18	Seawater Intrusion Barrier Project Operations	19
19	Apportionment of Budget Among Parties	20
	Figure 1 – West Coast Basin (showing groundwater production and key wells)	22
	Figure 2 – Monthly Water Production	23
	Figure 3 – West Coast Basin (showing key wells and facilities)	24
	Figure 4 – Monthly Rainfall	25
	Figure 5 – Total Water Use	26
	Figure 6 – Key Well Hydrographs Wilmington 1	27

# Appendix

A	Groundwater Extractions	28
B	Succession of Adjudicated Rights, June 2016	38

## West Coast Basin Administrative Body

Water Replenishment District of  
Southern California

West Coast Basin  
Water Rights Panel

**President**

Rob Katherman

*Division 2*

**Chair**

Rob Beste

*City of Torrance*

**Vice-President**

John D.S. Allen

*Division 3*

**Vice-Chair**

Katherine Nutting

*Golden State Water Company*

**Secretary**

Sergio Calderon

*Division 4*

**Treasurer**

Stephanie Katsouleas

*City of Manhattan Beach*

**Treasurer**

Albert Robles

*Division 5*

Ron Sorensen

*California Water Service Company*

**Director**

Willard H. Murray, Jr.

*Division 1*

Denis Kurt

*Tesoro Refining and Marketing Company*

# Summary of Pertinent Data

Item	Fiscal Year 2014 - 2015	Fiscal Year 2015 - 2016
Parties to judgment	65	65
Active pumpers	24	24
Active nonparties	0	0
Adjudicated Rights (acre-feet)	64,468.25	64,468.25
Rainfall (inches)	8.37	7.71
Injection at barrier projects (acre-feet)	23,234	20,991
<b>Watermaster expenses, total</b>	<b>\$310,178</b>	<b>\$172,896<sup>1</sup></b>
Watermaster expenses, per APA	\$4.81	\$2.68 <sup>1</sup>
Adjudicated Rights Extractions (acre-feet) <sup>2</sup>	39,096	31,635
Recycled water use by parties (acre-feet)	36,145	21,326
Imported water use by parties (acre-feet)	166,502	136,975
Exported water use by parties (acre-feet)	0	0
<b>Total water use by parties (acre-feet)</b>	<b>241,743</b>	<b>189,936</b>

<sup>1</sup> Budget reduction from 2014-2015 to 2015-2016 due to implementation of the new Watermaster structure under the terms of the 2014 amendment to the West Coast Basin Judgment.

<sup>2</sup> Excludes extractions by parties with non-consumptive water use permits and by nonparties.

# Introduction

The West Coast Basin (Basin) underlies 160 square miles in the southwestern part of the coastal plain of Los Angeles County. Figure 1 shows the location and adjudicated boundaries of the West Coast Basin. The Basin is bounded on the west by the Santa Monica Bay, on the north by the Ballona Escarpment, on the east by the Newport-Inglewood Uplift, and on the south by the San Pedro Bay and the Palos Verdes Hills. Twenty incorporated cities and several unincorporated areas overlie the Basin. An essential portion of the water needed by the residents and industries in the area overlying the Basin is pumped directly from the groundwater in storage. In 1945, when intrusion of seawater caused by declining water levels threatened the quality of the groundwater supply, legal action was initiated to halt the overdraft and prevent further damage to the Basin. In 1955, the Superior Court of Los Angeles County (Court) appointed the Division of Water Resources as the Watermaster to administer an Interim Agreement, and in 1961, the Court retained the Department of Water Resources (DWR) as the Watermaster of the final West Coast Basin Judgment (Judgment).

On December 5, 2014, the West Coast Basin Judgment was amended (Amended Judgment). The Amended Judgment established a new Watermaster structure, which replaces the Department of Water Resources. The new Watermaster consists of an Administrative Body, Water Rights Panel and Storage Panel. The Administrative Body is the Water Replenishment District of Southern California, the Water Rights Panel is composed of five West Coast Basin adjudicated rights holders, and the Storage Panel is composed of the WRD Board of Directors and the Water Rights Panel.

The Watermaster assists the Court in the administration and enforcement of the provisions of the Judgment. Among other duties, the Watermaster monitors groundwater levels and extractions and reports significant water-related events.



# Water Use

## A. Adjudicated Extractions by Parties

The Judgment limits the amount of groundwater each party may extract annually from the Basin. This limit, referred to as the adjudicated right shown in Table 1 for each party. A recipient of Exchange Pool water may pump the amount released to it in addition to its adjudicated right. The volume of water extracted from most wells is reported monthly. Appendix A lists, by party, the volume of groundwater extracted each month from each active well in the Basin. Figure 1 shows the pattern of groundwater extractions during Administrative Year 2015-2016. In addition, Figure 2 describes the amount of pumping by month.

To provide flexibility in the control of groundwater extractions, the Judgment contains provisions allowing each party to carry over into the succeeding administrative year its unused adjudicated rights. This amount of available carryover, however, is reduced by the amount of Stored Water held by that party, however, this reduction shall not cause the amount of Carryover to be less than 20% the Party's adjudicated rights.

## B. Groundwater Storage Activity by Parties

The Amended Judgment permits parties holding water rights to store water in the West Coast Basin for later recovery. During 2015-2016, 3,074.93 acre-feet of water was put into storage and none was extracted or transferred. All of this water was put into storage pursuant to Section V.4.D of Judgment, which allows parties to convert carryover to storage upon payment of the Replenishment Assessment to WRD. Tables 2 through 6 provide information on water placed into storage, extracted from storage and transferred storage. The Judgment provides for the transfer of stored water between parties. There were no transfers of stored water during the 2015-2016 administrative year.

## C. Excess Production

The Judgment provides for overextractions under certain conditions. A party may over extract by no more than two acre-feet or 10% of a Party's adjudicated right, whichever is greater. When a party overextracts in violation of the Judgment, Watermaster notifies the party to resolve the overextraction issue. Under certain circumstances, a party may overextract in a greater amount; however, prior approval must be obtained from the Watermaster – Water Rights Panel. The Excess Production must be made up in the following administrative year unless the Court determines this requirement would create an unreasonable hardship for the party.

Table 7 lists the names of parties that have over extracted groundwater during the year and shows the amount of overextraction by each party. During 2015-2016, two parties had a combined excess production 133.19 acre-feet.

#### **D. Extractions by Nonparties**

There were no extractions reported by non-parties in 2015-2016 (Table 8).

#### **E. Extractions of Contaminated Groundwater**

Any party may petition the Water Replenishment District of Southern California (WRD) for a Non-consumptive Water Use Permit (NCWUP) as part of a project to remedy or ameliorate groundwater contamination. If the petition is granted, the party may extract the groundwater without the production counting against its production rights, so long as conditions of the Judgement are met. Table 9 lists current Non-consumptive Water Use Permits issued by WRD and the amounts of groundwater extracted under those permits. A total of 1,167.79 acre-feet of water was extracted under NCWUP's in 2015-2016.

#### **F. Adjudicated Rights Transfers**

Each year, Adjudicated Rights are transferred between parties through sales and leases. Appendix B shows the succession of Adjudicated Rights in the West Coast Basin as of June 30, 2016.

Table 10 shows transfers of Adjudicated Rights through leases and Table 11 shows transfers of Adjudicated Rights through sales and purchases. During 2015-2016 there were nine leases that totaled 9,092.50 and one sale of adjudicated rights of 290.00 acre-feet. Each party's adjudicated right, as of June 30, 2016, is also shown in Table 1.

When land is sold on which a water right has been developed, the Watermaster must be furnished a copy of the sale document if the water right is also sold. The water right does not pass to the new land owner unless the sale document specifies that the water right was sold with the land. For the proper accounting of the water right, the sale document must specify the exact amount of water right.

In transferring water rights, parties must specify (1) the type of right (i.e., adjudicated rights, normal carryover, or drought carryover), (2) the amount of right to the nearest 0.01 acre-foot, and (3) the period of the lease, if applicable. Moreover, all leases must be made on an administrative year basis and must be executed by the parties and received by Watermaster Administrative Body by June 30 of the year in which the lease is effective.

#### **G. Exchange Pool**

The Judgment authorizes an Exchange Pool to provide additional water rights to parties without sufficient water. If a party's estimated water requirement for the following fiscal year exceeds its

total available water supply, that party may request additional water from the Exchange Pool. There were no requests for Exchange Pool water during 2015-2016 Administrative Year (Table 12).

#### **H. Status of Extraction Wells**

In the Basin there are 78 reported active extraction wells. The locations of the active extraction wells are shown on Figure 1. Table 13 shows no new extraction wells were completed in the Administrative Year. Table 14 shows that no extraction wells were reported destroyed.

#### **I. Meter Testing Program**

Accurate measurement of groundwater extractions is essential for the successful management of groundwater in the Basin. Therefore, Watermaster requires an operative water meter to be installed at each extraction well. It is the responsibility of each party to ensure that its meter and test facilities are installed properly and are maintained in good working condition. It is the goal of Watermaster to test the water meter at each active extraction well at least once every two years or when a party requests a meter calibration. Watermaster tests meters by volumetric or pitot tube comparisons. Watermaster notifies a party that it must repair or replace its meter when the meter registers beyond five percent accuracy. Watermaster calculates the monthly water production for each well using the meter readings and Unit of Measure Code reported for the well that month. If the registration accuracy of the meter deviates by as much as five percent, the calculated well production could be subject to revision.

There was no meter testing program during the 2015-2016 Administrative Year.

# Water Supply

## A. Precipitation

During 2015-2016, 9.41 inches of precipitation were measured at Los Angeles International Airport, 6.48 inches at Long Beach Airport, and 7.21 inches at Torrance Airport. Figure 3 shows the location of the precipitation stations and other key facilities. The mean precipitation over the West Coast Basin was 7.71 inches, which is 61% of the long-term mean of 12.63 inches (Figure 4).

## B. Groundwater Recharge

Replenishment in the West Coast Basin occurs primarily by underflow from the Central Basin, which bounds the West Coast Basin on the east, and injection of imported and recycled water into the West Coast and Dominguez Gap Seawater intrusion barriers located along the coast.

Water spread in the Central Basin percolates into the aquifers there, and eventually some groundwater crosses the Newport-Inglewood Uplift to replenish the groundwater in the West Coast Basin. Although the recharge water is not directly applied to the West Coast Basin, this recharge process returns large quantities of water to the Basin by substantially increasing the natural subsurface flow from the Central Basin to the West Coast Basin. During 2015-2016, Los Angeles County Department of Public Works (LACDPW) spread 91,225 acre-feet of water in the Montebello forebay. Table 15 identifies the sources and shows the amounts of replenishment water spread in the Central Basin.

Water injected in the sea water intrusion barrier projects also contributes greatly to the replenishment of the West Coast Basin (see Sea Water Intrusion Barrier Projects).

## C. In-Lieu Replenishment

During the 1965-1966 water year, WRD, in cooperation with the Metropolitan Water District of Southern California (MWD), began an in-lieu replenishment program. WRD may contract with any producer having access to supplemental water that could be used in lieu of extracting groundwater from the Basin.

In recent years, MWD has discontinued the availability of its supplemental replenishment water, thereby making the In-Lieu Program economically unfeasible in the West Coast Basin. As a result, the In-Lieu Replenishment Program has been suspended indefinitely.

## D. Imported Water

For the area overlying the West Coast Basin, imported water has been the largest component of

supply since the mid-1950s. Table 16 shows sources, users, and quantities of imported water. During 2015-2016, parties and one non-party (California-American Water Company) imported a total of 136,975 acre-feet of water.

### E. Quality of Imported Water

The table below summarizes MWD's imported water quality for injection, spreading, and potable use. In 2015-2016, only State Water Project water was used for spreading, while injection and potable demands were met with a blend of Colorado River and State Water Project Water.

Constituent	Colorado River Water <sup>1</sup> (mg/L)	State Water Project Water <sup>2</sup> (mg/L)
Chloride	82	74
Sulfate	220	44
Hardness (as CaCO <sub>3</sub> )	270	110
Total Dissolved Solids	590	280

### F. Recycled Water

Table 17 shows that 21,326 acre-feet of recycled water were used in the area overlying the Basin during 2015-2016. This amounts do not include the recycled water used to replenish groundwater in the Basin.

### G. Total Water Use

Figure 5 shows the total water use in the Basin during 2015-2016, including extracted groundwater, imported water for direct use, and recycled water for direct use.

### H. Exported Water

No groundwater was exported from the Basin. California Water Service Company exported purchased imported water from the Basin to portions of its service area in the Palos Verdes Hills.

### I. Seawater Intrusion Barrier Projects

The Los Angeles County Department of Public Works operates two barrier projects within the West

<sup>1</sup> At Lake Mathews - from 2015 MWD Annual Water Quality Report

<sup>2</sup> At Castaic Lake - from 2015 MWD Annual Water Quality Report

Coast Basin. Table 18 shows the quantities of imported and of recycled water injected into the barrier wells that comprise the West Coast and Dominguez Gap Barrier Projects. In 2015-2016, 20,991 acre-feet of water was injected into these two barrier systems.

## **J. Groundwater Levels**

Figure 6 shows the water level elevations in the Wilmington 1 key wells located in the West Coast Basin.

# Watermaster Administration Costs and Budget

To fund Watermaster activities, both the Administrative Body and the Water Rights Panel have annual assessments that are levied on water rights holders under the terms of the Judgment. The Administrative Body charges a flat fee of twenty dollars (\$20) per rights holder. The remaining amount of the Administrative Body budget is charged to rights holders based upon their proportional ownership of total adjudicated rights. The separate Water Rights Panel assessment is charged to all water rights holders at a rate of one dollar (\$1.00) per acre-foot.

The Watermaster budget for 2015-2016 was \$172,896. This amount is composed of the Water Rights Panel budget of \$64,468 and the Administrative Body budget of \$108,428. A summary of the 2015-2016 budget is provided in Table 19.

Table 1 - Water Rights Accounting (acre-feet)

Party	Sales <sup>1</sup>	Adjudicated Rights 2015-2016	Carryover 2014-2015	Leases <sup>2</sup>		Allowable <sup>3</sup> Extraction	Amount Pumped	Carryover Conversion	Balance <sup>4</sup>	Allowable carryover into 2016-2017		Total
				with Flex	w/o Flex					Drought	Normal	
ABC Nursery, Inc.	0.00	24.10	5.92	0.00	0.00	30.02	23.10	0.00	6.92	0.00	6.92	6.92
Aqua Capital Management LP	0.00	11.80	11.80	0.00	0.00	23.60	0.00	0.00	23.60	0.00	11.80	11.80
Asahi Fancy Koi, Inc	0.00	2.00	34.20	0.00	0.00	36.20	0.00	0.00	36.20	32.20	2.00	34.20
Automation Industries, Inc	0.00	0.70	4.10	0.00	0.00	4.80	0.00	0.00	4.80	3.40	0.70	4.10
Cal. Water Service Co./Hawthorne Lease	0.00	0.00	44.73	1.882.00	0.00	1,926.73	1,450.94	0.00	475.79	0.00	475.79	475.79
Cal. Water Service Company	0.00	4,070.00	2,987.86	0.00	0.00	7,057.86	1,540.90	0.00	5,516.96	0.00	4,070.00	4,070.00
Cal. Water Service (Dominguez)	0.00	10,417.45	8,585.24	0.00	0.00	19,002.69	3,258.09	0.00	15,744.60	0.00	10,417.45	10,417.45
Carson-Harbor Village Mobile Home Park	0.00	7.00	7.00	0.00	0.00	14.00	0.00	0.00	14.00	0.00	7.00	7.00
Carson-Madrone Company	0.00	104.00	104.00	0.00	0.00	208.00	0.00	0.00	208.00	0.00	104.00	104.00
CBS, Inc.	0.00	9.50	9.50	0.00	0.00	19.00	0.00	0.00	19.00	0.00	9.50	9.50
Century Builders	0.00	4.70	4.70	0.00	0.00	9.40	0.00	0.00	9.40	0.00	4.70	4.70
Chandler Palos Verdes Sand & Gravel Company	-290.00	294.20	37.92	0.00	0.00	42.12	0.00	0.00	42.12	0.00	4.20	4.20
Chevron USA Inc.	0.00	4,601.30	0.30	-4,601.00	0.00	0.60	0.00	0.00	0.30	0.00	0.30	0.30
Coastline Church of Christ	0.00	0.70	4.10	0.00	0.00	4.80	0.00	0.00	4.80	3.40	0.70	4.10
ConocoPhillips Company	0.00	6,170.00	2,547.79	0.00	0.00	8,717.79	5,016.94	0.00	3,700.85	787.78	2,913.07	3,700.85
Curtis, Owen W	0.00	0.36	3.08	0.00	0.00	3.44	0.00	0.00	3.44	2.72	0.36	3.08
Delaney, Golda Estate of	0.00	4.10	14.30	0.00	0.00	18.40	0.00	0.00	18.40	10.20	4.10	14.30
Eco Services Operations, LLC	0.00	521.00	65.92	0.00	0.00	586.92	464.69	0.00	122.23	0.00	122.23	122.23
EI Segundo City of	0.00	953.00	0.00	-953.00	0.00	0.00	0.00	0.00	0.00	0.00	0.00	0.00
Engelsma, Susan Trust	0.00	12.10	0.00	0.00	0.00	12.10	0.00	0.00	12.10	0.00	12.10	12.10
Evergreen America Corporation	0.00	5.40	5.40	0.00	0.00	10.80	0.00	0.00	10.80	0.00	5.40	5.40
ExxonMobil Oil Corporation	0.00	2,596.40	1,885.55	0.00	0.00	4,481.95	1,315.13	0.00	3,166.82	30.43	2,596.40	2,626.83
Fujimoto, SR. & St & JK	0.00	20.00	32.28	0.00	0.00	52.28	0.00	0.00	52.28	12.28	20.00	32.28
Gillingham, Florence R, et al	0.00	2.40	2.40	0.00	0.00	4.80	0.00	0.00	4.80	0.00	2.40	2.40
Golden State Water Company <sup>5</sup>	0.00	7,502.24	4.38	4,604.00	0.00	8,464.62	2,000.05	0.00	6,464.57	3.39	6,461.18	6,464.57
Hawthorne, City of	0.00	1,882.00	0.00	-1,882.00	0.00	0.00	0.00	0.00	0.00	0.00	0.00	0.00
Hillside Memorial Park	0.00	92.30	-13.58	0.00	0.00	78.72	114.70	0.00	-35.98	0.00	-35.98	-35.98
Hollywood Park Land Company, LLC	0.00	282.00	0.00	-282.00	0.00	0.00	0.00	0.00	0.00	0.00	0.00	0.00
Honeywell International, Inc.	0.00	22.50	22.50	0.00	0.00	45.00	0.00	0.00	45.00	0.00	22.50	22.50
Honold, Kristin Brandsma	0.00	11.80	11.80	0.00	0.00	23.60	0.00	0.00	23.60	0.00	11.80	11.80
Inglewood, City of	0.00	4,449.89	3,731.55	-53.00	0.00	8,128.44	2,024.87	0.00	6,103.57	0.00	4,396.89	4,396.89
Kinder Morgan Liquids Terminals LLC	0.00	167.00	162.71	0.00	0.00	329.71	41.84	0.00	287.87	0.00	167.00	167.00
Leuzinger, Emma L Estate of	0.00	1.40	5.90	0.00	0.00	7.30	0.00	0.00	7.30	4.50	1.40	5.90
Lomita, City of	0.00	1,352.00	44.68	0.00	0.00	1,396.68	625.98	0.00	770.70	0.00	770.70	770.70
Long Beach, City of	0.00	0.70	0.70	0.00	0.00	1.40	0.00	0.00	1.40	0.00	0.70	0.70
Lopes, Frank	0.00	3.70	13.10	0.00	0.00	16.80	0.00	0.00	16.80	9.40	3.70	13.10



Table 1 - Water Rights Accounting Continued

Party	Sales <sup>1</sup>	Adjudicated Rights 2015-2016	Carryover 2014-2015	Leases <sup>2</sup> with Flex	Leases <sup>2</sup> w/o Flex	Allowable <sup>3</sup> Extraction	Amount Pumped	Carryover Conversion	Balance <sup>4</sup>	Allowable carryover into 2016-2017 Drought	Allowable carryover into 2016-2017 Normal	Total
L.A. County Department of Parks & Recreation	0.00	363.70	-65.96	175.00	0.00	472.74	424.35	0.00	48.39	0.00	48.39	48.39
L.A. County Sanitation Districts-JWPCP	0.00	102.00	102.00	0.00	0.00	204.00	0.00	0.00	204.00	0.00	102.00	102.00
Los Angeles, City of	0.00	1,503.00	1,503.00	0.00	0.00	3,006.00	0.00	0.00	3,006.00	0.00	1,503.00	1,503.00
Loyola Marymount University	0.00	48.10	48.10	0.00	0.00	96.20	0.00	0.00	96.20	0.00	48.10	48.10
Manhattan Beach, City of	0.00	1,131.20	262.09	950.00	0.00	2,343.29	1,059.05	0.00	1,284.24	0.00	1,284.24	1,284.24
McDonnell Douglas Corp.	0.00	1.70	1.70	0.00	0.00	3.40	0.00	0.00	3.40	0.00	1.70	1.70
Montrose Chemical Corporation of California	0.00	1.20	1.25	0.00	0.00	2.45	0.00	0.00	2.45	0.00	1.20	1.20
Mori, Roy H and Kenji	0.00	3.60	12.80	0.00	0.00	16.40	0.00	0.00	16.40	9.20	3.60	12.80
Myron Z. Chatawin & Nettie Dresser Trust & JHD Pr.	0.00	0.00	12.10	0.00	0.00	12.10	0.79	0.00	11.31	0.00	0.00	0.00
Northrop Corporation	0.00	38.15	38.15	0.00	0.00	76.30	0.00	0.00	76.30	0.00	38.15	38.15
Nozaki, Sumikichi	0.00	7.00	7.00	0.00	0.00	14.00	0.00	0.00	14.00	0.00	7.00	7.00
Pacific Crest Cemetery Company	0.00	39.40	-49.37	0.00	0.00	-9.97	87.24	0.00	-97.21	0.00	-97.21	-97.21
Palos Verdes Begonia Farm	0.00	0.00	7.40	0.00	0.00	7.40	0.00	0.00	7.40	7.40	0.00	7.40
Rehor, Josephine P	0.00	2.20	2.20	0.00	0.00	4.40	0.00	0.00	4.40	0.00	2.20	2.20
Rolling Hills Country Club	290.00	0.00	0.00	-20.00	0.00	270.00	110.00	0.00	160.00	0.00	160.00	160.00
Roman Catholic Archbishop of L.A.	0.00	72.30	77.93	160.00	0.00	310.23	267.05	0.00	43.18	0.00	43.18	43.18
Shell Oil Company	0.00	1,019.50	0.08	-1,019.50	0.00	0.08	0.00	0.00	0.08	0.08	0.00	0.08
Southern California Edison Co.	0.00	57.10	58.06	0.00	0.00	115.16	22.43	0.00	92.73	6.22	57.10	63.32
Tesoro Refining & Marketing Co.	0.00	8,741.00	7,987.30	1,019.50	0.00	17,747.80	7,336.54	0.00	10,411.26	0.00	9,760.50	9,760.50
Torrance, City of	0.00	5,638.86	3,074.93	0.00	0.00	8,713.79	3,240.69	3,074.93	2,398.17	0.00	1,466.16	1,466.16
Vukelich, Mike Jr.	0.00	10.00	13.90	20.00	0.00	43.90	42.27	0.00	1.63	0.00	1.63	1.63
Watson Land Company	0.00	80.20	80.20	0.00	0.00	160.40	0.00	0.00	160.40	0.00	80.20	80.20
Watt Industrial Properties	0.00	0.10	1.10	0.00	0.00	1.20	0.00	0.00	1.20	1.00	0.10	1.10
Wiseburn School District	0.00	8.20	8.20	0.00	0.00	16.40	0.00	0.00	16.40	0.00	8.20	8.20
<b>TOTAL:</b>	<b>0.00</b>	<b>64,466.25</b>	<b>33,565.99</b>	<b>0.00</b>	<b>0.00</b>	<b>94,388.24</b>	<b>30,467.64</b>	<b>3,074.93</b>	<b>60,845.37</b>	<b>923.60</b>	<b>47,110.45</b>	<b>48,034.05</b>

1 Sales of Adjudicated Rights, excluding sales of carryover.

2 See Table 10 and Table 11 and Appendix B for information concerning leases, transfer of water right entitlements or prior ownership. Lease with flex includes carryover provisions.

3 Allowable Extraction = Adjudicated Rights + Carryover + Leases.

4 Balance = Allowable Extraction - Amount Pumped - Carryover Conversion.

5 Includes 3,646 acre-feet of increased extraction (pursuant to Section IV(K) of the Central Basin Judgment).

Table 2 - Storage Accounting

Party	Carryover from 2014-2015		2015-2016 Storage Activity								Carryover to 2016-2017			
	ISA <sup>1</sup>	CSP <sup>2</sup>	Transfers		Water put into Storage		Water Extracted From Storage		Balance		ISA	CSP	Total	
			ISA	CSP	ISA	CSP	ISA	CSP	ISA	CSP				
Torrance, City of	1,097.77	-	-	-	1,157.77	1,917.16	-	-	2,255.54	1,917.16	2,255.54	1,917.16	4,172.70	4,172.70
<b>West Coast Basin Total</b>	1,097.77	0.00	0.00	0.00	1,157.77	1,917.16	0.00	0.00	2,255.54	1,917.16	2,255.54	1,917.16	4,172.70	4,172.70

<sup>1</sup> Individual Storage Account.

<sup>2</sup> Community Storage Pool.

Table 3 - Water Put Into Storage

Party	Quantity	Storage Account <sup>1</sup>	Storage Method <sup>2</sup>	Date
Torrance, City of	1,157.77	ISA	CC	6/30/16
Torrance, City of	1,917.16	CSA	CC	6/30/16
<b>Total:</b>	<b>3,074.93</b>			

Table 4 - Water Extracted From Storage

Party	Quantity	Storage Account	Date
No stored water was extracted in 2015 - 2016			

Table 5 - Storage Transfers

Party	Quantity	Storage Account	Date
No stored water was transferred in 2015 - 2016			

Table 6 - Historic Storage

Year	Water Put Into Storage			Water Extracted From Storage			Balance			Available Adjudicated Storage Capacity		
	ISA	CSP	Total	ISA	CSP	Total	ISA	CSP	Total	ISA	CSP	Total
2014	1,097.77	0.00	1,097.77	0.00	0.00	0.00	1,097.77	0.00	1,097.77	24,702.23	35,500.00	60,202.23
2015	1,157.77	1,917.16	3,074.93	0.00	0.00	0.00	4,172.70	1,917.16	6,089.86	23,544.46	33,582.84	57,127.30

<sup>1</sup> CSP = Community Storage Pool. ISA = Individual Storage Account.

<sup>2</sup> CC = Carryover Conversion. SG = Spreading Grounds.

Table 7 - Overextractions

Party	Adjudicated Rights	Allowable Extraction	Amount Pumped	Overextraction <sup>1</sup>	Allowable Overextraction <sup>2</sup>
Hillside Memorial Park	92.30	78.72	114.70	35.98	9.23
Pacific Crest Cemetery	39.40	-9.97	87.24	97.21	3.94
<b>Total:</b>	<b>131.70</b>	<b>68.75</b>	<b>201.94</b>	<b>133.19</b>	<b>13.17</b>

Table 8 - Extractions by Nonparties

Nonparty	Amount Pumped (acre-feet)
There were no extractions reported by non-parties in 2015 - 2016.	
<b>Total</b>	<b>0.00</b>

Table 9 - Non-Consumptive Water Use Permits

Party	Date	2015-2016 Extraction (acre-feet)
Montrose Chemical Corporation	November 7, 2012	6.31
Brewer Desalter	July 22, 1992	1,070.29
Shell Oil	December 28, 2011	91.19
<b>Total</b>		<b>1,167.79</b>

<sup>1</sup> Overextraction = Allowable Extraction - Amount Pumped.

<sup>2</sup> Judgment allows overextractions computed as 2 acre-feet or 10 percent of Adjudicated Rights, whichever is greater.

Table 10 - Adjudicated Rights Transfers (acre-feet)

Party	Transaction Type	Amount	Recordation Date	Party	Net Amount
California Water Service Co./Hawthorne Lease	Lease with flex	1,882.00	2/1/13	Hawthorne, City of	1,882.00
Chevron USA Inc.	Lease with flex	950.00	10/15/15	Manhattan Beach, City of	-4,601.00
Chevron USA Inc.	Lease with flex	3,651.00	8/19/15	Golden State Water Company	
El Segundo City of	Lease with flex	953.00	5/28/15	Golden State Water Company	-953.00
Golden State Water Company	Lease with flex	953.00	5/28/15	El Segundo City of	4,604.00
Golden State Water Company	Lease with flex	3,651.00	8/19/15	Chevron USA Inc.	
Hawthorne, City of	Lease with flex	1,882.00	2/1/13	California Water Service Co./Hawthorne Lease	-1,882.00
Hollywood Park Land Company LLC	Lease with flex	282.00	4/8/15	Inglewood, City of	-282.00
Inglewood City of	Lease with flex	282.00	4/8/15	Hollywood Park Land Company LLC	-53.00
Inglewood City of	Lease with flex	160.00	4/28/16	Roman Catholic Archbishop of Los Angeles	
Inglewood City of	Lease with flex	175.00	4/28/16	Los Angeles Department of Parks & Recreation	
Los Angeles Department of Parks & Recreation	Lease with flex	175.00	4/28/16	Inglewood City of	175.00
Manhattan Beach, City of	Lease with flex	950.00	10/15/15	Chevron USA Inc.	950.00
Rolling Hills Country Club	Lease with flex	20.00	6/28/16	Vukelich, Mike	-20.00
Roman Catholic Archbishop of Los Angeles	Lease with flex	160.00	4/28/16	Inglewood City of	160.00
Shell Oil Company	Lease with flex	1,019.50	5/25/12	Tesoro Refining & Marketing Company	-1,019.50
Tesoro Refining & Marketing Company	Lease with flex	1,019.50	5/25/12	Shell Oil Company	1,019.50
Vukelich, Mike	Lease with flex	20.00	6/28/16	Rolling Hills Country Club	20.00
<b>Total Leased Volume</b>					<b>9,092.50</b>

Table 11 - Sales and Purchases (acre-feet)

Party	Transaction Type	Amount	Recordation Date	Party	Net Amount
Chandler's Palos Verdes Sand and Gravel Co.	Sale	290.00	9/23/15 TO	Rolling Hills Country Club	-290.00
Rolling Hills Country Club	Sale	290.00	9/23/15 FROM	Chandler's Palos Verdes Sand and Gravel Co.	290.00
<b>Total Sales Volume</b>					<b>290.00</b>

Table 12 - Exchange Pool

Party	Adjudicated Rights	Required Offer	Actual Offer	Amount Sold	Payment due Exchanger
There were no requests to purchase water, therefore, operation of the Exchange Pool Program was suspended					

Table 13 - Wells Completed

Party	Recordation No.	State Well No.	Owner Designation
There were no new wells completed in 2015 - 2016			

Table 14 - Wells Destroyed

Party	Recordation No.	State Well No.	Owner Designation
There were no new wells destroyed in 2015 - 2016			

Table 15 - Replenishment Operations

Water spread in the Montebello forebay area of the Central Basin provides subsurface recharge to the West Coast Basin.

Source of Water	Quantity (acre-feet)	
	2014 - 2015	2015-2016
Local Runoff	13,384	11,374
Recycled water:		
Whittier Narrows Water Reclamation Plant	5,550	5,864
San Jose Water Reclamation Plant	37,675	46,782
Pomona Water Reclamation Plant	3,694	3,244
MWD untreated Tier 1 water purchased by WRD	18,515	23,961
Make-up water from Upper San Gabriel Basin	0	0
<b>Total</b>	<b>78,818</b>	<b>91,225</b>

Table 16 - Imported Water Use

Source of Water	Party	Quantity (acre-feet)	
		2014 - 2015	2015-2016
Colorado River and State Water Project	Long Beach, City of	40,145	17,860
Colorado River and State Water Project	<b>West Coast Basin Municipal Water District:</b>		
	California American Water Company	238	415
	California Water Service Company 1	10,098	9,168
	California Water Service Company (Dominguez)	26,735	23,489
	California Water Service Company (Hawthorne Lease)	2,397	2,401
	El Segundo, City of	8,097	7,854
	Golden State Water Company	17,564	20,489
	Inglewood, City of	7,445	6,693
	Lomita, City of	1,463	1,374
	Manhattan Beach, City of	3,184	3,458
	West Basin MWD Subtotal	<b>77,222</b>	<b>75,343</b>
Colorado River and State Water Project	Torrance, City of	16,205	13,668
Owens River-Mono Basin, Colorado River, and State Water Project	Los Angeles, City of	30,101	27,804
Central Basin Groundwater	California-American Water Company	2,830	2,300
<b>Total Imported Water</b>		<b>166,502</b>	<b>136,975</b>



Table 17 - Recycled Water Use

Source of Water	Party	Quantity (acre-feet)	
		2014-2015	2015-2016
<b>West Basin Municipal Water District:</b>	California Water Service Company	147	156
	California Water Service Company (Hawthorne Lease)	99	104
	California Water Service Company (Dominguez)	5,699	5,803
	El Segundo, City of	9,290	8,927
	Golden State Water Company	464	405
	Inglewood, City of	728	765
	Los Angeles, City of	881	874
	Manhattan Beach, City of	313	280
	Torrance, City of	5,270	4,012
<b>Total Recycled Water</b>		<b>22,891</b>	<b>21,326</b>

Table 18 - Seawater Intrusion Barrier Project Operations

Provisional data provided by the Los Angeles County Department of Public Works.

Barrier Project	Quantity (acre-feet)	
	2014-2015	2015-2016
West Coast Basin Barrier		
Imported water injection	3,958	1,080
Recycled water injection	12,403	13,410
Dominguez Gap Barrier		
Imported water injection	3,851	2,912
Recycled water injection	4,050	3,589
<b>Total</b>	<b>24,262</b>	<b>20,991</b>

Table 19 - Apportionment of Budget among Parties

Party	Adjudicated Rights	Water Rights Panel	Administrative Body	Total Amount Billed
ABC Nursery Inc.	24.1	\$24.10	\$60.11	\$84.21
Aqua Capital Management LP	11.8	\$11.80	\$39.64	\$51.44
Asahi Fancy Koi Inc.	2	\$2.00	\$23.33	\$25.33
Automation Industries Inc.	0.7	\$0.70	\$21.17	\$21.87
California Water Service Company - Dominguez	10,417.45	\$10,417.45	\$17,359.90	\$27,777.35
California Water Service Company - Hermosa / Redondo	4,070.00	\$4,070.00	\$6,794.54	\$10,864.54
Carson Harbor Village Mobile Home Park	7	\$7.00	\$31.65	\$38.65
Carson-Madrona Company #3 Del Amo	104	\$104.00	\$193.11	\$297.11
CBS Inc.	9.5	\$9.50	\$35.81	\$45.31
Century Builders	4.7	\$4.70	\$27.82	\$32.52
Chandler Palos Verdes Sand & Gravel Company	294.2	\$294.20	\$509.70	\$803.90
Chevron U.S.A. Inc.	4,601.30	\$4,601.30	\$7,678.89	\$12,280.19
Coastline Church of Christ	0.7	\$0.70	\$21.17	\$21.87
Curtis, Owen	0.36	\$0.36	\$20.60	\$20.96
Delaney, Golda, Estate of	4.1	\$4.10	\$26.82	\$30.92
Eco Services Operations LLC	521	\$521.00	\$887.21	\$1,408.21
El Segundo, City of	953	\$953.00	\$1,606.27	\$2,559.27
Evergreen America Corporation	5.4	\$5.40	\$28.99	\$34.39
Exxon Mobil Oil Corporation	2,596.40	\$2,596.40	\$4,341.72	\$6,938.12
Fujimoto, SR & ST & JK	20	\$20.00	\$53.29	\$73.29
Gillingham, Florence R, et al	2.4	\$2.40	\$23.99	\$26.39
Golden State Water Company	7,502.24	\$7,502.24	\$12,507.52	\$20,009.76
Hawthorne, City of ( California Water Service Co.)	1,882.00	\$1,882.00	\$3,152.60	\$5,034.60
Hillside Memorial Park	92.3	\$92.30	\$173.63	\$265.93
Hollywood Park Land Company, LLC	282	\$282.00	\$489.39	\$771.39
Honeywell International Inc.	22.5	\$22.50	\$57.45	\$79.95
Honold, Kristin Brandsma	11.8	\$11.80	\$39.64	\$51.44
Inglewood, City of	4,449.89	\$4,449.89	\$7,426.87	\$11,876.76
Kinder Morgan Liquids Terminals, LLC	167	\$167.00	\$297.97	\$464.97
Leuzinger, Emma L., Estate of	1.4	\$1.40	\$22.33	\$23.73
Lomita Water System, City of	1,352.00	\$1,352.00	\$2,270.41	\$3,622.41
Long Beach, City of	0.7	\$0.70	\$21.17	\$21.87
Lopes, Frank	3.7	\$3.70	\$26.16	\$29.86
Los Angeles County Recreation Facilities	363.7	\$363.70	\$625.38	\$989.08

Table 19 - Apportionment of Budget among Parties

Party	Adjudicated Rights	Water Rights Panel	Administrative Body	Total Amount Billed
Los Angeles County Sanitation District No. 2	102	\$102.00	\$189.78	\$291.78
Los Angeles Department of Water and Power, City of	1,503.00	\$1,503.00	\$2,521.75	\$4,024.75
Loyola Marymount University	48.1	\$48.10	\$100.06	\$148.16
Manhattan Beach, City of	1,131.20	\$1,131.20	\$1,902.89	\$3,034.09
McDonnell Douglas Corporation	1.7	\$1.70	\$22.83	\$24.53
Montrose Chemical Corporation of California	1.2	\$1.20	\$22.00	\$23.20
Mori, Roy H. and Kenji	3.6	\$3.60	\$25.99	\$29.59
Northrop Corporation	38.15	\$38.15	\$83.50	\$121.65
Nozaki, Sumikichi	7	\$7.00	\$31.65	\$38.65
Pacific Crest Cemetery Company	39.4	\$39.40	\$85.58	\$124.98
Phillips 66 Company	6,170.00	\$6,170.00	\$10,290.00	\$16,460.00
Rehor, Josephine P.	2.2	\$2.20	\$23.66	\$25.86
Roman Catholic Archbishop of Los Angeles	72.3	\$72.30	\$140.34	\$212.64
Shell Oil Company	1,019.50	\$1,019.50	\$1,716.96	\$2,736.46
Southern California Edison Company	57.1	\$57.10	\$115.04	\$172.14
Susan Engelsma Trust	12.1	\$12.10	\$40.14	\$52.24
Tesoro Refining & Marketing Company LLC	8,741.00	\$8,741.00	\$14,569.44	\$23,310.44
Torrance, City of	5,638.86	\$5,638.86	\$9,405.91	\$15,044.77
Vukelich, Mike, Jr.	10	\$10.00	\$36.65	\$46.65
Watson Land Company	80.2	\$80.20	\$153.49	\$233.69
Watt Industrial Properties	0.1	\$0.10	\$20.17	\$20.27
Wiseburn School District	8.2	\$8.20	\$33.65	\$41.85
<b>Total</b>	<b>64,468.25</b>	<b>\$64,468.25</b>	<b>\$108,427.73</b>	<b>\$172,895.98</b>

Figure 1 - West Coast Basin  
(showing groundwater production and key wells)

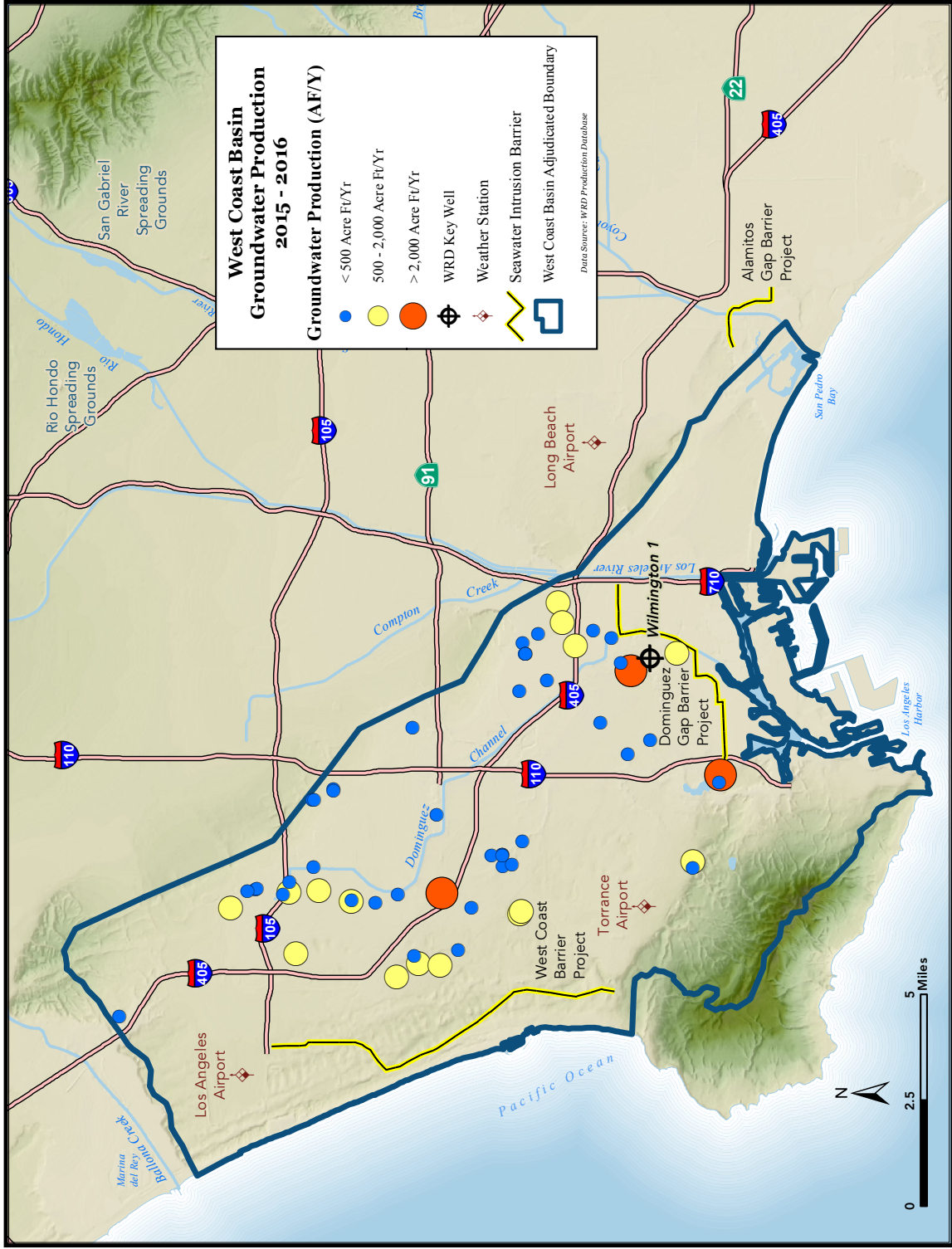


Figure 2 - Monthly Water Production  
(includes non-consumptive use)

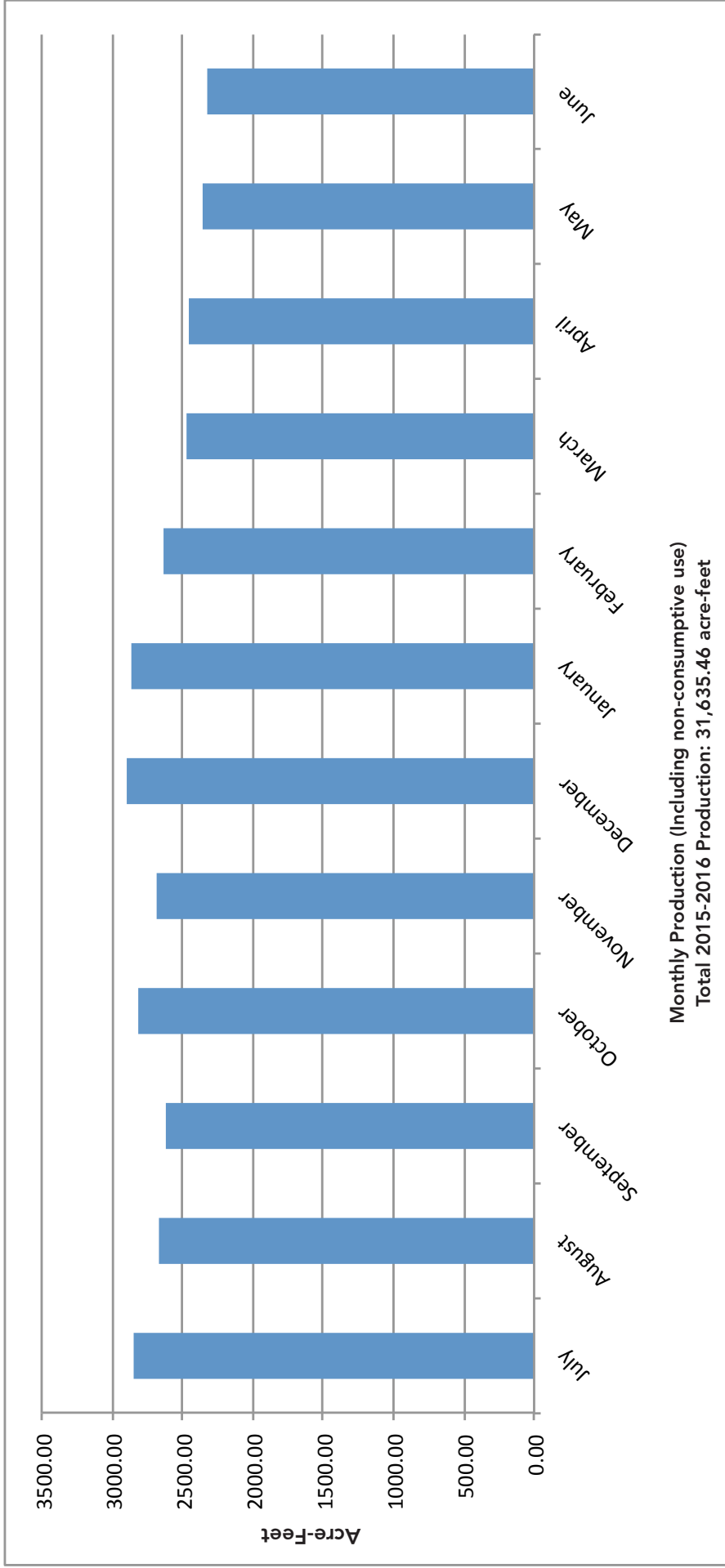
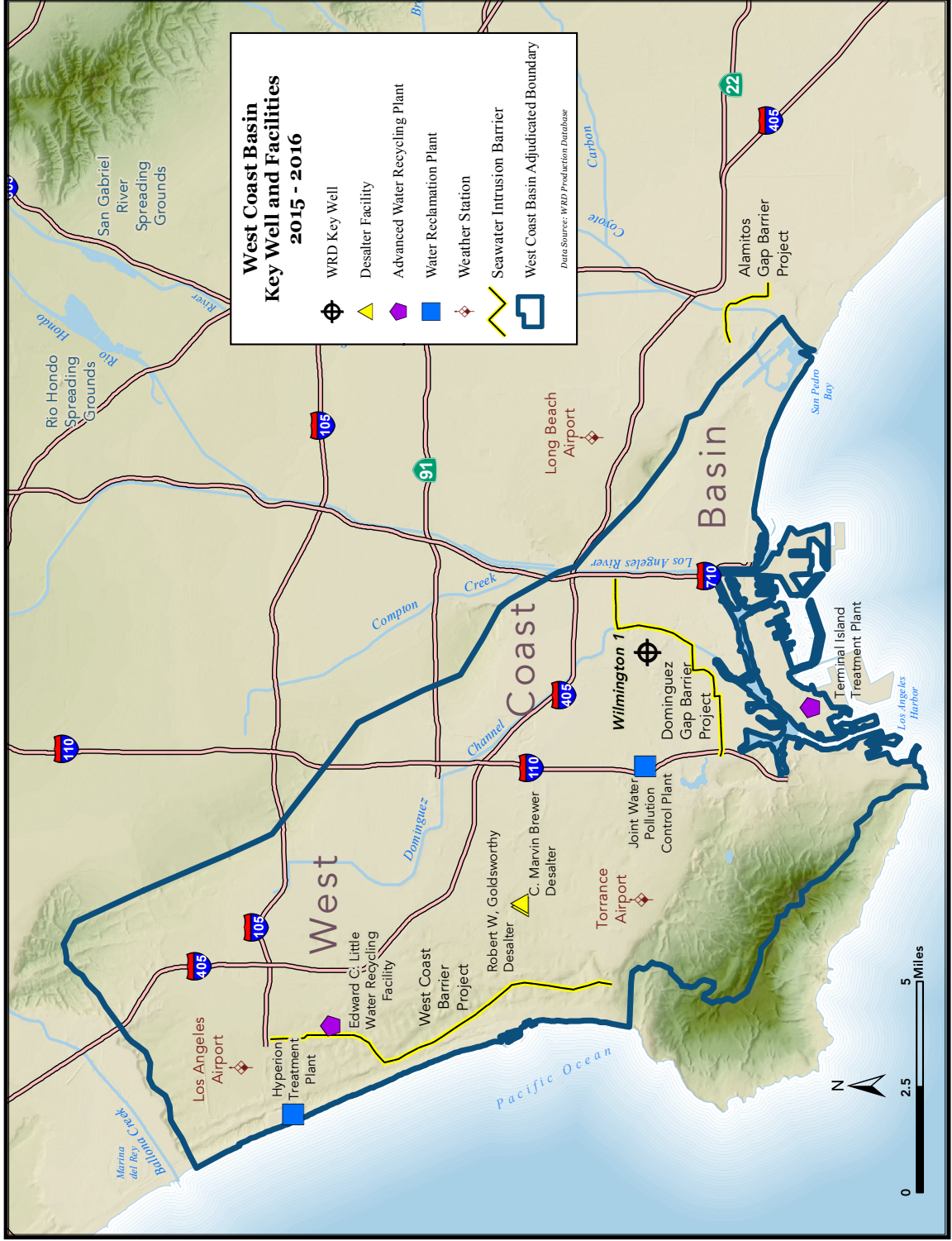


Figure 3 - West Coast Basin (showing key wells and facilities)



### Figure 4 - Monthly Rainfall

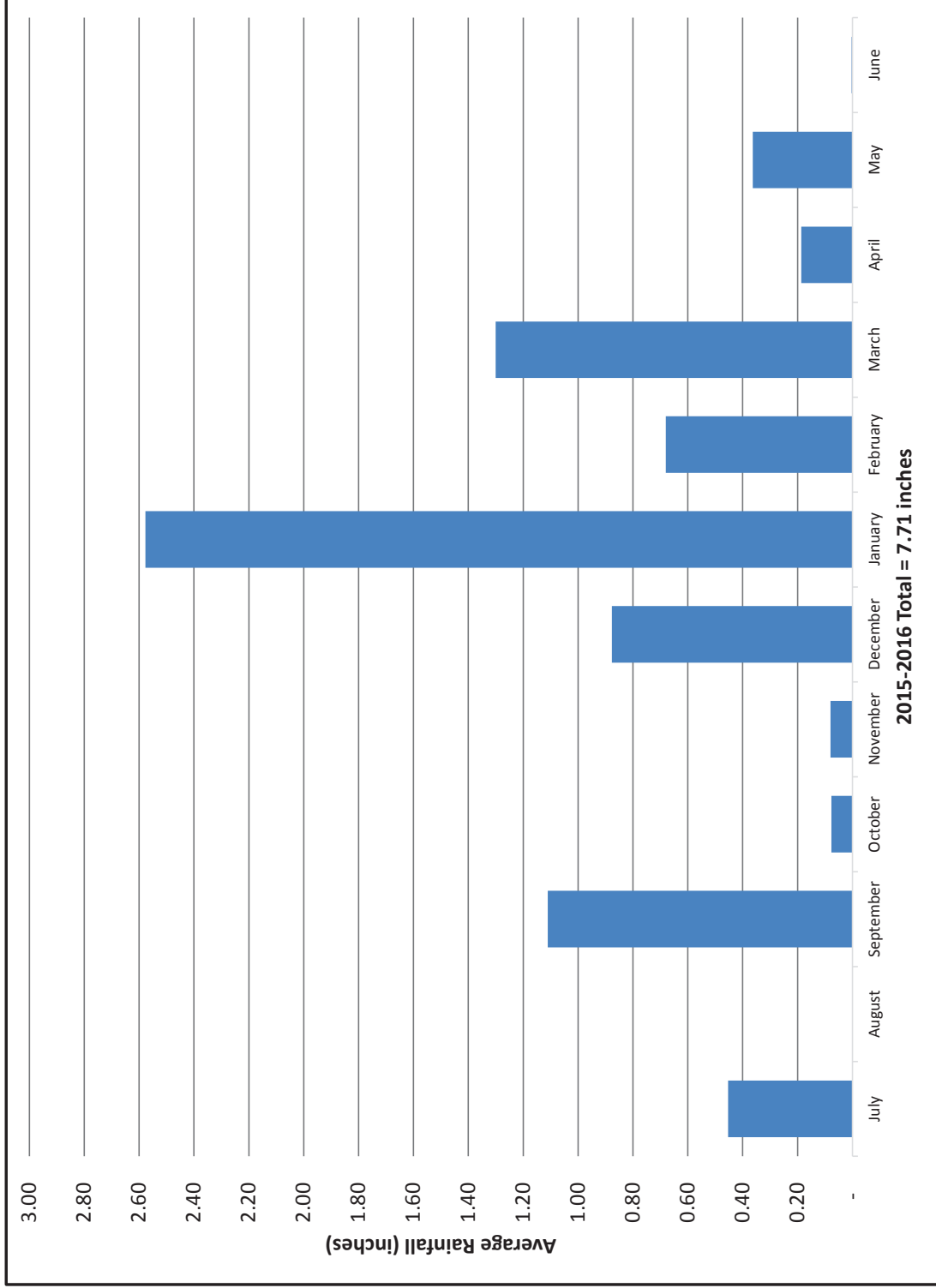


Figure 5 - Total Water Use

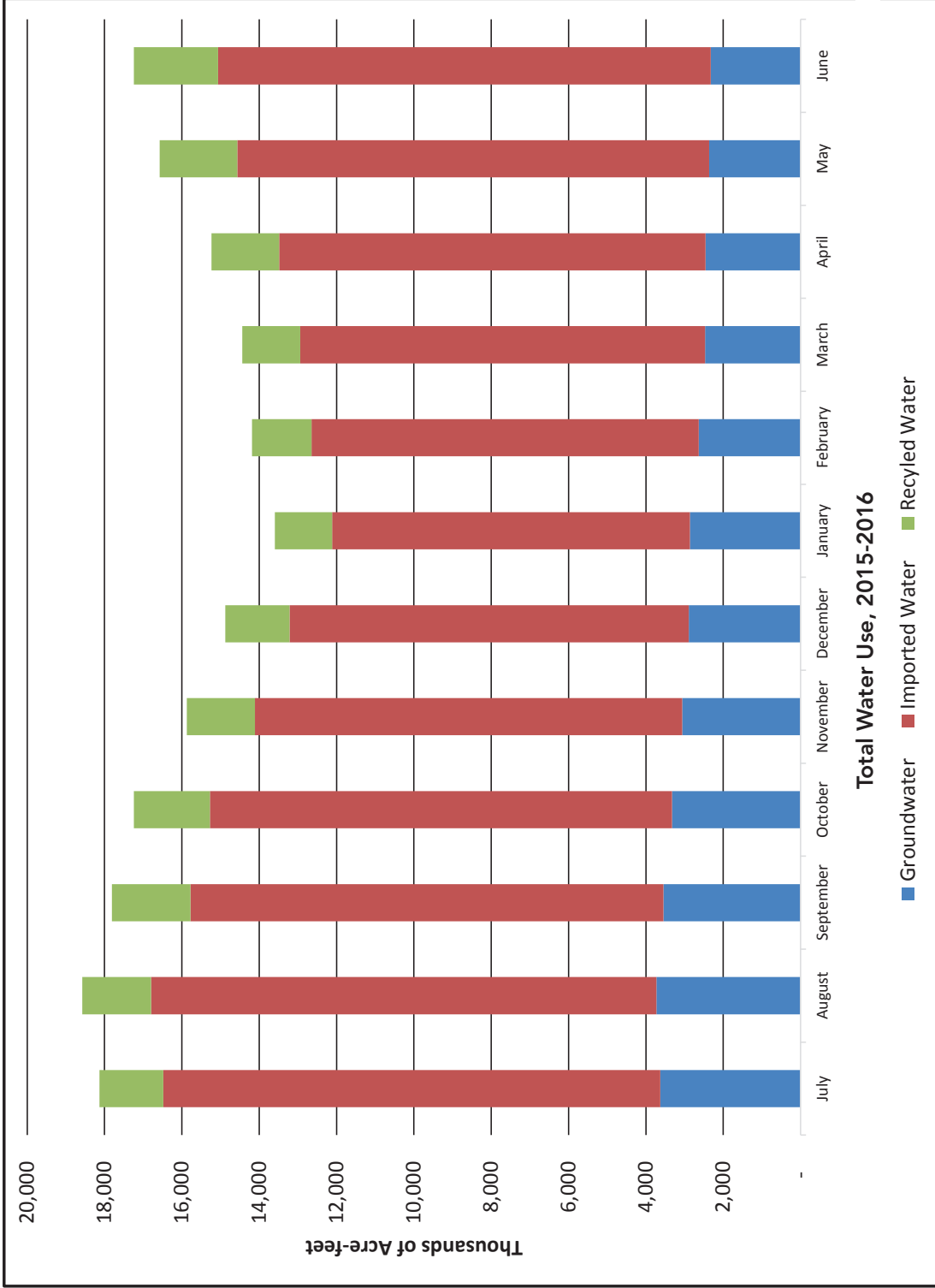
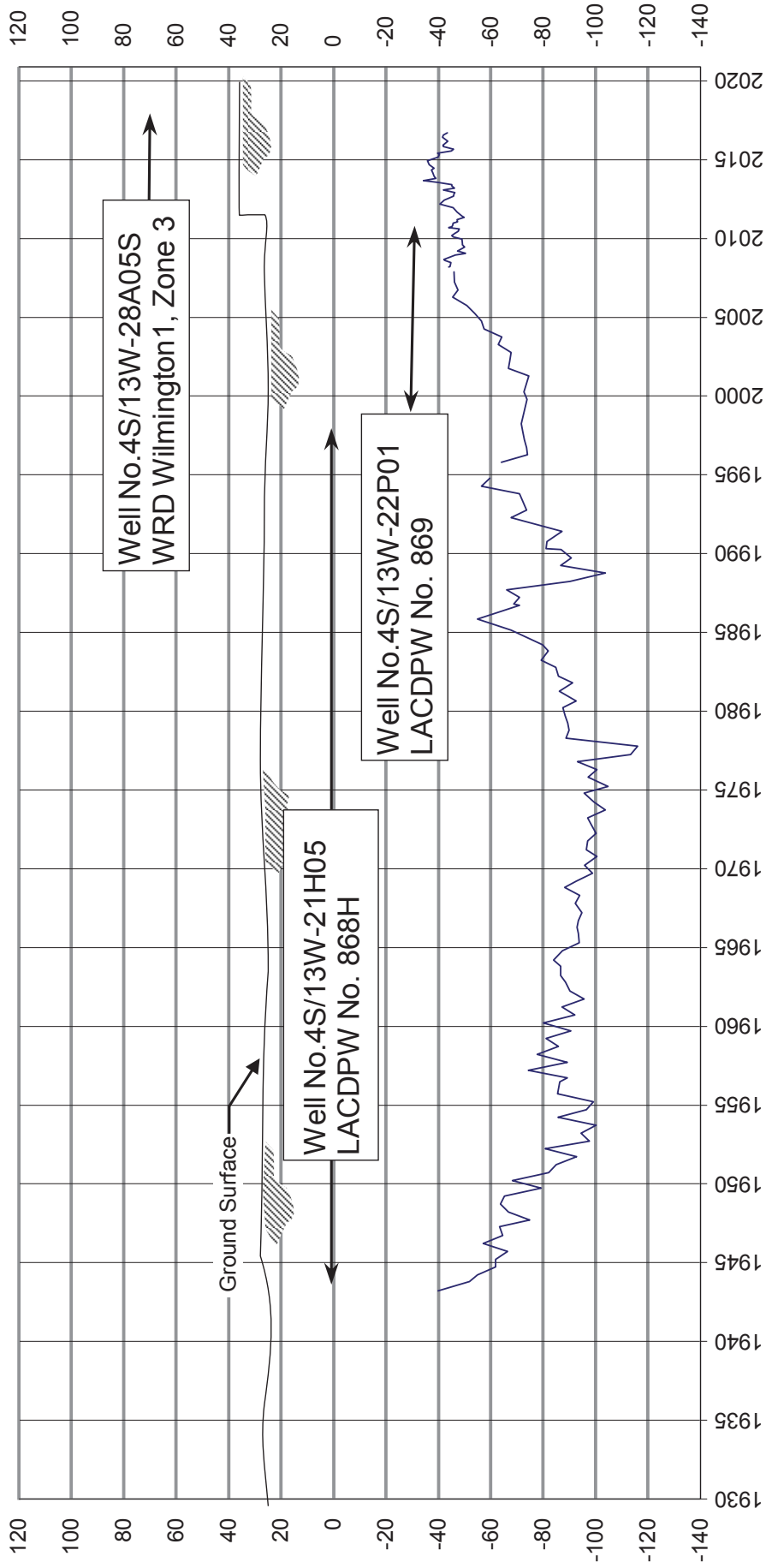




Figure 6 - Key Well Hydrograph - Wilmington 1



# Appendix A

## Groundwater Extractions

## Appendix A - Groundwater Extractions (acre-feet)

SWN/Owner No.	JUL	AUG	SEPT	OCT	NOV	DEC	JAN	FEB	MAR	APR	MAY	JUN	TOTAL
<b>ABC Nursery, Inc.</b>	<b>3.10</b>	<b>3.00</b>	<b>2.00</b>	<b>1.00</b>	<b>2.00</b>	<b>1.00</b>	<b>0.00</b>	<b>2.00</b>	<b>1.00</b>	<b>2.00</b>	<b>2.00</b>	<b>4.00</b>	<b>23.10</b>
003S013W29F011S/1	3.10	3.00	2.00	1.00	2.00	1.00	0.00	2.00	1.00	2.00	2.00	4.00	23.10
<b>SWN/Owner No.</b>	<b>JUL</b>	<b>AUG</b>	<b>SEPT</b>	<b>OCT</b>	<b>NOV</b>	<b>DEC</b>	<b>JAN</b>	<b>FEB</b>	<b>MAR</b>	<b>APR</b>	<b>MAY</b>	<b>JUN</b>	<b>TOTAL</b>
<b>California Water Service Co./Hawthorne Lease</b>	<b>15.63</b>	<b>148.20</b>	<b>151.34</b>	<b>165.40</b>	<b>99.49</b>	<b>158.88</b>	<b>168.79</b>	<b>39.97</b>	<b>71.29</b>	<b>162.89</b>	<b>168.10</b>	<b>100.96</b>	<b>1,450.94</b>
003S014W09M001S/13	15.63	148.20	151.34	165.40	99.49	158.88	168.79	39.97	71.29	162.89	168.10	100.96	1,450.94
003S014W09N005S/12	0.00	0.00	0.00	0.00	0.00	0.00	0.00	0.00	0.00	0.00	0.00	0.00	0.00
003S014W09P001S/8	0.00	0.00	0.00	0.00	0.00	0.00	0.00	0.00	0.00	0.00	0.00	0.00	0.00
003S014W09N004S/4	0.00	0.00	0.00	0.00	0.00	0.00	0.00	0.00	0.00	0.00	0.00	0.00	0.00
<b>SWN/Owner No.</b>	<b>JUL</b>	<b>AUG</b>	<b>SEPT</b>	<b>OCT</b>	<b>NOV</b>	<b>DEC</b>	<b>JAN</b>	<b>FEB</b>	<b>MAR</b>	<b>APR</b>	<b>MAY</b>	<b>JUN</b>	<b>TOTAL</b>
<b>California Water Service Company</b>	<b>152.22</b>	<b>101.37</b>	<b>139.92</b>	<b>154.32</b>	<b>149.62</b>	<b>135.39</b>	<b>140.48</b>	<b>142.63</b>	<b>113.49</b>	<b>31.36</b>	<b>96.27</b>	<b>183.83</b>	<b>1,540.90</b>
003S014W29H001S/30-01	0.80	0.00	0.00	0.65	0.28	0.21	0.00	0.00	0.00	0.00	0.49	42.84	45.27
003S014W32A002S/08-02	61.04	37.54	59.37	62.27	60.94	61.72	54.54	56.00	42.00	3.09	41.06	53.49	593.06
003S014W29J001S/22-01	90.38	63.83	80.55	91.40	88.40	73.46	85.94	86.63	71.49	28.27	54.72	87.50	902.57
<b>SWN/Owner No.</b>	<b>JUL</b>	<b>AUG</b>	<b>SEPT</b>	<b>OCT</b>	<b>NOV</b>	<b>DEC</b>	<b>JAN</b>	<b>FEB</b>	<b>MAR</b>	<b>APR</b>	<b>MAY</b>	<b>JUN</b>	<b>TOTAL</b>
<b>California Water Service Company (Dominguez)</b>	<b>304.58</b>	<b>276.17</b>	<b>258.66</b>	<b>295.13</b>	<b>282.78</b>	<b>329.30</b>	<b>294.87</b>	<b>249.77</b>	<b>210.33</b>	<b>266.50</b>	<b>255.99</b>	<b>234.01</b>	<b>3,258.09</b>
004S013W17D003S/219-02	0.00	0.00	0.00	0.00	0.00	0.00	0.00	0.00	0.00	0.00	0.00	0.00	0.00
004S013W15A014S/298-01	0.00	0.00	0.00	0.00	0.00	0.00	0.00	0.00	0.00	0.00	0.00	0.00	0.00
004S013W11P002S/294-01	98.67	95.47	101.47	77.12	82.96	159.19	82.57	55.88	45.99	100.09	97.35	95.81	1,092.57
004S013W17D002S/219-01	0.00	0.00	0.00	0.00	0.00	0.00	0.00	0.00	0.00	0.00	0.00	0.00	0.00
004S013W29E006S/275-01	33.28	0.00	0.00	46.76	50.86	60.99	59.80	55.03	48.79	28.02	12.54	2.02	398.09
004S013W20C001S/279-01	48.90	48.16	40.59	43.21	21.61	0.04	0.00	0.00	0.00	0.00	0.00	0.00	202.51

## Appendix A - Groundwater Extractions Continued

SWN/Owner No.	JUL	AUG	SEPT	OCT	NOV	DEC	JAN	FEB	MAR	APR	MAY	JUN	TOTAL
<b>California Water Service Company (Dominguez)</b>	<b>304.58</b>	<b>276.17</b>	<b>258.66</b>	<b>295.13</b>	<b>282.78</b>	<b>329.30</b>	<b>294.87</b>	<b>249.77</b>	<b>210.33</b>	<b>266.50</b>	<b>255.99</b>	<b>234.01</b>	<b>3,258.09</b>
004S013W15F001S/277-01	56.84	68.18	58.65	62.02	64.44	53.29	64.30	58.55	31.97	53.95	60.15	55.45	687.79
004S013W15A006S/RCOMP	0.00	0.00	0.00	0.00	0.00	0.00	0.00	0.00	0.00	0.00	0.00	0.00	0.00
004S013W15B005S/215-02	0.00	0.00	0.00	0.00	0.00	0.00	0.00	0.00	0.00	0.00	0.00	0.00	0.00
004S013W15A011S/215-01	66.89	64.36	57.95	66.02	62.91	55.79	88.20	80.31	83.58	84.44	85.95	80.73	877.13

SWN/Owner No.	JUL	AUG	SEPT	OCT	NOV	DEC	JAN	FEB	MAR	APR	MAY	JUN	TOTAL
<b>ConocoPhillips Company</b>	<b>493.06</b>	<b>454.93</b>	<b>443.90</b>	<b>340.02</b>	<b>361.70</b>	<b>383.88</b>	<b>415.68</b>	<b>445.66</b>	<b>445.92</b>	<b>383.29</b>	<b>394.43</b>	<b>454.47</b>	<b>5,016.94</b>
004S013W31P003S/7	238.02	239.35	227.78	103.73	146.13	197.86	196.32	214.96	221.25	212.66	202.10	177.73	2,377.89
004S013W21J003S/5	245.15	212.77	213.89	234.54	214.99	185.52	218.54	229.51	224.38	170.11	169.87	207.98	2,527.25
004S013W31N004S/LA006	9.89	2.81	2.23	1.75	0.58	0.50	0.82	1.19	0.29	0.52	22.46	68.76	111.80
004S013W21R010S/W-4	0.00	0.00	0.00	0.00	0.00	0.00	0.00	0.00	0.00	0.00	0.00	0.00	0.00
004S013W31N003S/LA005	0.00	0.00	0.00	0.00	0.00	0.00	0.00	0.00	0.00	0.00	0.00	0.00	0.00
004S013W21R001S/WI002	0.00	0.00	0.00	0.00	0.00	0.00	0.00	0.00	0.00	0.00	0.00	0.00	0.00

SWN/Owner No.	JUL	AUG	SEPT	OCT	NOV	DEC	JAN	FEB	MAR	APR	MAY	JUN	TOTAL
<b>Eco Services Operations, LLC</b>	<b>44.70</b>	<b>51.65</b>	<b>49.36</b>	<b>44.31</b>	<b>0.00</b>	<b>13.26</b>	<b>39.83</b>	<b>50.32</b>	<b>48.58</b>	<b>41.10</b>	<b>46.05</b>	<b>35.53</b>	<b>464.69</b>
004S013W10C004S/2	44.70	51.65	49.36	44.31	0.00	13.26	39.83	50.32	48.58	41.10	46.05	35.53	464.69

SWN/Owner No.	JUL	AUG	SEPT	OCT	NOV	DEC	JAN	FEB	MAR	APR	MAY	JUN	TOTAL
<b>ExxonMobil Oil Corporation</b>	<b>91.83</b>	<b>41.09</b>	<b>129.14</b>	<b>125.73</b>	<b>101.44</b>	<b>124.53</b>	<b>123.09</b>	<b>113.84</b>	<b>120.84</b>	<b>119.76</b>	<b>115.51</b>	<b>108.36</b>	<b>1,315.16</b>
004S014W02N001S/EW-01R	0.00	0.00	0.00	0.00	0.00	0.00	0.00	0.00	0.00	0.00	0.00	0.00	0.00
None/None	0.00	0.00	0.00	0.00	0.00	0.00	0.00	0.00	0.00	0.00	0.00	0.00	0.00
None/None	18.23	9.12	34.59	25.68	14.45	16.76	16.71	15.22	17.41	18.96	18.96	30.57	236.66
None/None	7.68	0.00	15.24	15.03	14.50	14.51	15.30	13.26	11.00	12.94	11.60	12.90	143.96

## Appendix A - Groundwater Extractions Continued

SWN/Owner No.	JUL	AUG	SEPT	OCT	NOV	DEC	JAN	FEB	MAR	APR	MAY	JUN	TOTAL
<b>ExxonMobil Oil Corporation</b>	<b>91.83</b>	<b>41.09</b>	<b>129.14</b>	<b>125.73</b>	<b>101.44</b>	<b>124.53</b>	<b>123.09</b>	<b>113.84</b>	<b>120.84</b>	<b>119.76</b>	<b>115.51</b>	<b>108.36</b>	<b>1,315.16</b>
None/None	17.64	1.38	20.10	22.97	30.70	31.66	30.79	28.73	31.46	30.47	27.10	30.26	303.26
None/None	23.03	12.17	31.41	32.88	31.55	32.42	32.32	30.29	32.33	31.29	31.14	30.09	350.92
None/None	25.25	18.42	27.80	29.17	10.24	29.18	27.97	26.34	28.64	26.10	26.71	4.54	280.36
None/None	0.00	0.00	0.00	0.00	0.00	0.00	0.00	0.00	0.00	0.00	0.00	0.00	0.00
004S014W03L007S/T0010	0.00	0.00	0.00	0.00	0.00	0.00	0.00	0.00	0.00	0.00	0.00	0.00	0.00
004S014W02M003S/RW-3	0.00	0.00	0.00	0.00	0.00	0.00	0.00	0.00	0.00	0.00	0.00	0.00	0.00
004S014W02M002S/RW-2	0.00	0.00	0.00	0.00	0.00	0.00	0.00	0.00	0.00	0.00	0.00	0.00	0.00
004S014W02M001S/RW-1	0.00	0.00	0.00	0.00	0.00	0.00	0.00	0.00	0.00	0.00	0.00	0.00	0.00
004S014W03F001S/M-07	0.00	0.00	0.00	0.00	0.00	0.00	0.00	0.00	0.00	0.00	0.00	0.00	0.00
004S014W03M001S/M-06	0.00	0.00	0.00	0.00	0.00	0.00	0.00	0.00	0.00	0.00	0.00	0.00	0.00
<b>Golden State Water Company</b>	<b>37.49</b>	<b>14.50</b>	<b>140.73</b>	<b>190.76</b>	<b>112.27</b>	<b>172.36</b>	<b>234.90</b>	<b>225.25</b>	<b>237.18</b>	<b>333.72</b>	<b>186.77</b>	<b>114.12</b>	<b>2,000.05</b>
003S014W13B004S/BA005	0.00	0.24	0.00	0.00	3.36	0.09	0.06	0.07	0.05	0.13	31.62	0.19	35.81
003S014W14D002S/129-02	0.06	0.86	0.00	0.20	0.06	0.06	0.04	0.09	0.02	0.08	6.56	5.22	13.25
003S014W03K004S/YU005	0.00	0.00	0.00	0.00	0.00	0.00	0.00	0.00	0.00	0.00	2.63	0.08	2.71
003S014W03K005S/YU004	0.00	0.00	0.00	0.00	0.00	0.00	0.00	0.00	0.00	0.00	2.84	0.07	2.91
003S014W13J010S/S0006	0.00	0.18	0.00	0.00	0.05	0.12	0.07	0.06	0.07	0.08	9.99	0.14	10.76
003S014W13B003S/BA004	0.00	0.13	0.00	0.00	0.04	0.05	0.06	0.07	0.05	18.41	0.03	0.40	19.24
003S014W02Q001S/TR004	0.00	0.00	0.00	0.00	0.00	0.00	0.00	0.00	0.00	0.00	0.00	0.00	0.00
003S014W13J009S/S0005	0.00	0.02	0.00	0.00	0.00	0.00	0.00	0.00	0.27	4.50	0.59	0.77	6.15
003S014W15P002S/Doty2	8.37	0.44	26.64	37.41	8.37	63.23	121.76	83.79	56.05	100.87	2.11	0.04	509.08
003S014W15P001S/Doty1	6.40	0.34	20.41	40.32	6.92	0.00	0.06	35.50	44.66	0.00	2.97	0.00	157.58
003S014W15B003S/Goldmedal #1	10.81	11.64	93.68	112.70	93.42	108.75	112.82	105.62	111.17	106.41	12.14	0.00	879.16

## Appendix A - Groundwater Extractions Continued

SWN/Owner No.	JUL	AUG	SEPT	OCT	NOV	DEC	JAN	FEB	MAR	APR	MAY	JUN	TOTAL
<b>Golden State Water Company</b>	<b>37.49</b>	<b>14.50</b>	<b>140.73</b>	<b>190.76</b>	<b>112.27</b>	<b>172.36</b>	<b>234.90</b>	<b>225.25</b>	<b>237.18</b>	<b>333.72</b>	<b>186.77</b>	<b>114.12</b>	<b>2,000.05</b>
003S014W25P004S/DA001	6.64	0.65	0.00	0.09	0.05	0.06	0.03	0.05	24.84	103.19	112.75	107.21	355.56
003S014W21M001S/CH001	0.00	0.00	0.00	0.00	0.00	0.00	0.00	0.00	0.00	0.00	0.00	0.00	0.00
003S014W22L001S/CD001	5.21	0.00	0.00	0.04	0.00	0.00	0.00	0.00	0.00	0.05	2.54	0.00	7.84
<b>SWN/Owner No.</b>	<b>JUL</b>	<b>AUG</b>	<b>SEPT</b>	<b>OCT</b>	<b>NOV</b>	<b>DEC</b>	<b>JAN</b>	<b>FEB</b>	<b>MAR</b>	<b>APR</b>	<b>MAY</b>	<b>JUN</b>	<b>TOTAL</b>
<b>Hillside Memorial Park</b>	<b>15.84</b>	<b>15.97</b>	<b>11.68</b>	<b>10.32</b>	<b>9.57</b>	<b>5.78</b>	<b>2.90</b>	<b>3.63</b>	<b>3.44</b>	<b>8.35</b>	<b>13.07</b>	<b>14.15</b>	<b>114.70</b>
002S014W19K004S/3	15.84	15.97	11.68	10.32	9.57	5.78	2.90	3.63	3.44	8.35	13.07	14.15	114.70
<b>SWN/Owner No.</b>	<b>JUL</b>	<b>AUG</b>	<b>SEPT</b>	<b>OCT</b>	<b>NOV</b>	<b>DEC</b>	<b>JAN</b>	<b>FEB</b>	<b>MAR</b>	<b>APR</b>	<b>MAY</b>	<b>JUN</b>	<b>TOTAL</b>
<b>Inglewood, City of</b>	<b>145.08</b>	<b>133.34</b>	<b>130.74</b>	<b>142.96</b>	<b>192.92</b>	<b>197.30</b>	<b>191.94</b>	<b>178.53</b>	<b>181.40</b>	<b>175.23</b>	<b>183.15</b>	<b>172.28</b>	<b>2,024.87</b>
003S014W03F002S/5	0.10	0.10	0.10	0.10	0.10	0.10	0.10	0.10	0.10	0.10	0.00	0.00	1.00
003S014W03D003S/6	126.75	117.19	110.04	112.51	106.04	108.02	102.51	95.27	97.14	92.06	96.71	91.87	1,256.11
003S014W10F002S/4	18.23	16.05	15.93	9.28	0.00	0.00	0.00	0.00	0.00	0.00	0.00	0.00	59.49
003S014W10G004S/2	0.00	0.00	4.67	0.00	0.00	0.00	0.00	0.00	0.00	0.00	0.00	0.00	4.67
003S014W10G003S/1	0.00	0.00	0.00	21.07	86.78	89.18	89.33	83.16	84.16	83.07	86.44	80.41	703.60
<b>SWN/Owner No.</b>	<b>JUL</b>	<b>AUG</b>	<b>SEPT</b>	<b>OCT</b>	<b>NOV</b>	<b>DEC</b>	<b>JAN</b>	<b>FEB</b>	<b>MAR</b>	<b>APR</b>	<b>MAY</b>	<b>JUN</b>	<b>TOTAL</b>
<b>Kinder Morgan Liquids Terminals LLC</b>	<b>0.25</b>	<b>2.78</b>	<b>2.92</b>	<b>4.72</b>	<b>4.05</b>	<b>3.13</b>	<b>4.14</b>	<b>3.23</b>	<b>3.09</b>	<b>4.60</b>	<b>5.09</b>	<b>3.84</b>	<b>41.84</b>
None/None	0.25	2.78	2.92	4.72	4.05	3.13	4.14	3.23	3.09	4.60	5.09	3.84	41.84
<b>SWN/Owner No.</b>	<b>JUL</b>	<b>AUG</b>	<b>SEPT</b>	<b>OCT</b>	<b>NOV</b>	<b>DEC</b>	<b>JAN</b>	<b>FEB</b>	<b>MAR</b>	<b>APR</b>	<b>MAY</b>	<b>JUN</b>	<b>TOTAL</b>
<b>Lomita, City of</b>	<b>45.10</b>	<b>49.44</b>	<b>46.14</b>	<b>50.01</b>	<b>51.97</b>	<b>61.50</b>	<b>47.91</b>	<b>72.11</b>	<b>52.39</b>	<b>66.27</b>	<b>47.00</b>	<b>36.14</b>	<b>625.98</b>
004S014W35E007S/5	45.10	49.44	46.14	50.01	51.97	61.50	47.91	72.11	52.39	66.27	47.00	36.14	625.98

## Appendix A - Groundwater Extractions Continued

SWN/Owner No.	JUL	AUG	SEPT	OCT	NOV	DEC	JAN	FEB	MAR	APR	MAY	JUN	TOTAL
<b>Los Angeles County Department of Parks &amp; Recreation</b>	<b>44.78</b>	<b>49.88</b>	<b>35.83</b>	<b>40.23</b>	<b>38.06</b>	<b>23.34</b>	<b>6.49</b>	<b>24.45</b>	<b>24.99</b>	<b>32.38</b>	<b>46.90</b>	<b>57.02</b>	<b>424.35</b>
003S014W11J002S/1397C	0.00	0.00	0.00	0.00	0.00	0.00	0.00	0.00	0.00	0.00	0.00	0.00	0.00
003S014W27C001S/00761	44.78	49.88	35.83	40.23	38.06	23.34	6.49	24.45	24.99	32.38	46.90	57.02	424.35
<b>SWN/Owner No.</b>	<b>JUL</b>	<b>AUG</b>	<b>SEPT</b>	<b>OCT</b>	<b>NOV</b>	<b>DEC</b>	<b>JAN</b>	<b>FEB</b>	<b>MAR</b>	<b>APR</b>	<b>MAY</b>	<b>JUN</b>	<b>TOTAL</b>
<b>Los Angeles, City of Dept of Water and Power</b>	<b>0.00</b>	<b>0.00</b>	<b>0.00</b>	<b>0.00</b>	<b>0.00</b>	<b>0.00</b>	<b>0.00</b>	<b>0.00</b>	<b>0.00</b>	<b>0.00</b>	<b>0.00</b>	<b>0.00</b>	<b>0.00</b>
004S013W31E001S/MP001	0.00	0.00	0.00	0.00	0.00	0.00	0.00	0.00	0.00	0.00	0.00	0.00	0.00
004S013W30K001S/0320C	0.00	0.00	0.00	0.00	0.00	0.00	0.00	0.00	0.00	0.00	0.00	0.00	0.00
004S013W30G001S/0310C	0.00	0.00	0.00	0.00	0.00	0.00	0.00	0.00	0.00	0.00	0.00	0.00	0.00
004S013W30G003S/0320E	0.00	0.00	0.00	0.00	0.00	0.00	0.00	0.00	0.00	0.00	0.00	0.00	0.00
<b>SWN/Owner No.</b>	<b>JUL</b>	<b>AUG</b>	<b>SEPT</b>	<b>OCT</b>	<b>NOV</b>	<b>DEC</b>	<b>JAN</b>	<b>FEB</b>	<b>MAR</b>	<b>APR</b>	<b>MAY</b>	<b>JUN</b>	<b>TOTAL</b>
<b>Manhattan Beach, City of</b>	<b>135.07</b>	<b>164.25</b>	<b>166.22</b>	<b>123.38</b>	<b>142.45</b>	<b>151.77</b>	<b>142.10</b>	<b>0.00</b>	<b>0.92</b>	<b>9.47</b>	<b>12.22</b>	<b>11.20</b>	<b>1,059.05</b>
003S014W29D005S/11A	0.00	0.00	0.00	0.00	0.00	0.00	0.00	0.00	0.00	0.00	0.00	0.00	0.00
003S014W29C003S/15	135.07	164.25	166.22	123.38	142.45	151.77	142.10	0.00	0.92	9.47	12.22	11.20	1,059.05
<b>SWN/Owner No.</b>	<b>JUL</b>	<b>AUG</b>	<b>SEPT</b>	<b>OCT</b>	<b>NOV</b>	<b>DEC</b>	<b>JAN</b>	<b>FEB</b>	<b>MAR</b>	<b>APR</b>	<b>MAY</b>	<b>JUN</b>	<b>TOTAL</b>
<b>Montrose Chemical Corporation of California</b>	<b>0.00</b>	<b>0.00</b>	<b>0.05</b>	<b>0.31</b>	<b>5.61</b>	<b>0.00</b>	<b>0.00</b>	<b>0.00</b>	<b>0.00</b>	<b>0.00</b>	<b>0.29</b>	<b>0.05</b>	<b>6.31</b>
None/None	0.00	0.00	0.00	0.00	0.00	0.00	0.00	0.00	0.00	0.00	0.00	0.00	0.00
None/None	0.00	0.00	0.00	0.00	0.00	0.00	0.00	0.00	0.00	0.00	0.00	0.00	0.00
None/None	0.00	0.00	0.00	0.00	0.00	0.00	0.00	0.00	0.00	0.00	0.09	0.02	0.11
None/None	0.00	0.00	0.00	0.00	0.00	0.00	0.00	0.00	0.00	0.00	0.10	0.00	0.10
None/None	0.00	0.00	0.00	0.00	0.00	0.00	0.00	0.00	0.00	0.00	0.00	0.00	0.00
None/None	0.00	0.00	0.00	0.00	0.00	0.00	0.00	0.00	0.00	0.00	0.10	0.03	0.13
None/None	0.00	0.00	0.00	0.00	0.00	0.00	0.00	0.00	0.00	0.00	0.00	0.00	0.00

Appendix A - Groundwater Extractions Continued

SWN/Owner No.	JUL	AUG	SEPT	OCT	NOV	DEC	JAN	FEB	MAR	APR	MAY	JUN	TOTAL
<b>Montrose Chemical Corporation of California</b>	<b>0.00</b>	<b>0.00</b>	<b>0.05</b>	<b>0.31</b>	<b>5.61</b>	<b>0.00</b>	<b>0.00</b>	<b>0.00</b>	<b>0.00</b>	<b>0.00</b>	<b>0.29</b>	<b>0.05</b>	<b>6.31</b>
None/None	0.00	0.00	0.00	0.00	0.00	0.00	0.00	0.00	0.00	0.00	0.00	0.00	0.00
None/None	0.00	0.00	0.00	0.00	0.00	0.00	0.00	0.00	0.00	0.00	0.00	0.00	0.00
None/None	0.00	0.00	0.00	0.01	0.13	0.00	0.00	0.00	0.00	0.00	0.00	0.00	0.14
None/None	0.00	0.00	0.01	0.07	1.26	0.00	0.00	0.00	0.00	0.00	0.00	0.00	1.34
None/None	0.00	0.00	0.01	0.03	0.60	0.00	0.00	0.00	0.00	0.00	0.00	0.00	0.64
None/None	0.00	0.00	0.01	0.04	0.60	0.00	0.00	0.00	0.00	0.00	0.00	0.00	0.65
None/None	0.00	0.00	0.00	0.02	0.29	0.00	0.00	0.00	0.00	0.00	0.00	0.00	0.31
None/None	0.00	0.00	0.00	0.00	0.00	0.00	0.00	0.00	0.00	0.00	0.00	0.00	0.00
None/None	0.00	0.00	0.01	0.05	1.00	0.00	0.00	0.00	0.00	0.00	0.00	0.00	1.06
None/None	0.00	0.00	0.00	0.01	0.02	0.00	0.00	0.00	0.00	0.00	0.00	0.00	0.03
None/None	0.00	0.00	0.00	0.01	0.25	0.00	0.00	0.00	0.00	0.00	0.00	0.00	0.26
None/None	0.00	0.00	0.01	0.05	1.26	0.00	0.00	0.00	0.00	0.00	0.00	0.00	1.32
None/None	0.00	0.00	0.00	0.01	0.12	0.00	0.00	0.00	0.00	0.00	0.00	0.00	0.13
None/None	0.00	0.00	0.00	0.00	0.00	0.00	0.00	0.00	0.00	0.00	0.00	0.00	0.00
None/None	0.00	0.00	0.00	0.01	0.08	0.00	0.00	0.00	0.00	0.00	0.00	0.00	0.09
None/None	0.00	0.00	0.00	0.00	0.00	0.00	0.00	0.00	0.00	0.00	0.00	0.00	0.00
None/None	0.00	0.00	0.00	0.00	0.00	0.00	0.00	0.00	0.00	0.00	0.00	0.00	0.00
None/None	0.00	0.00	0.00	0.00	0.00	0.00	0.00	0.00	0.00	0.00	0.00	0.00	0.00

SWN/Owner No.	JUL	AUG	SEPT	OCT	NOV	DEC	JAN	FEB	MAR	APR	MAY	JUN	TOTAL
<b>Myron Z. Chalavin &amp; Nettie Desser Trust &amp; JHD Pr.</b>	<b>0.19</b>	<b>0.05</b>	<b>0.10</b>	<b>0.24</b>	<b>0.02</b>	<b>0.02</b>	<b>0.00</b>	<b>0.00</b>	<b>0.00</b>	<b>0.12</b>	<b>0.00</b>	<b>0.05</b>	<b>0.79</b>
004S013W15Q001S/878H	0.19	0.05	0.10	0.24	0.02	0.02	0.00	0.00	0.00	0.12	0.00	0.05	0.79



## Appendix A - Groundwater Extractions Continued

SWN/Owner No.	JUL	AUG	SEPT	OCT	NOV	DEC	JAN	FEB	MAR	APR	MAY	JUN	TOTAL
<b>Pacific Crest Cemetery Company</b>	6.44	8.40	5.94	4.92	5.12	3.05	4.53	4.64	3.21	7.21	12.29	21.49	87.24
003S014W33E001S/7Z 83	6.44	8.40	5.94	4.92	5.12	3.05	4.53	4.64	3.21	7.21	12.29	21.49	87.24
<b>SWN/Owner No.</b>	<b>JUL</b>	<b>AUG</b>	<b>SEPT</b>	<b>OCT</b>	<b>NOV</b>	<b>DEC</b>	<b>JAN</b>	<b>FEB</b>	<b>MAR</b>	<b>APR</b>	<b>MAY</b>	<b>JUN</b>	<b>TOTAL</b>
<b>Rehor, Josephine P</b>	0.00	0.00	0.00	0.00	0.00	0.00	0.00	0.00	0.00	0.00	0.00	0.00	0.00
<b>SWN/Owner No.</b>	<b>JUL</b>	<b>AUG</b>	<b>SEPT</b>	<b>OCT</b>	<b>NOV</b>	<b>DEC</b>	<b>JAN</b>	<b>FEB</b>	<b>MAR</b>	<b>APR</b>	<b>MAY</b>	<b>JUN</b>	<b>TOTAL</b>
<b>Rolling Hills Country Club</b>	10.00	4.00	13.00	10.00	5.00	3.00	3.00	7.00	9.00	13.00	8.00	25.00	110.00
004S014W35E006S/2	10.00	4.00	13.00	10.00	5.00	3.00	3.00	7.00	9.00	13.00	8.00	25.00	110.00
004S014W35F002S/PLANT	0.00	0.00	0.00	0.00	0.00	0.00	0.00	0.00	0.00	0.00	0.00	0.00	0.00
<b>SWN/Owner No.</b>	<b>JUL</b>	<b>AUG</b>	<b>SEPT</b>	<b>OCT</b>	<b>NOV</b>	<b>DEC</b>	<b>JAN</b>	<b>FEB</b>	<b>MAR</b>	<b>APR</b>	<b>MAY</b>	<b>JUN</b>	<b>TOTAL</b>
<b>Roman Catholic Archbishop of Los Angeles</b>	28.92	29.39	14.65	14.96	27.87	15.41	4.32	14.91	13.52	30.73	32.30	40.07	267.05
002S014W18J001S/AA	0.00	0.00	3.67	10.88	19.41	11.47	4.32	14.91	12.72	30.60	31.95	40.07	180.00
002S014W18Q002S/HOLY1	25.50	25.35	8.66	2.09	6.14	3.61	0.00	0.00	0.80	0.13	0.35	0.00	72.63
002S014W18Q001S/OLY0	3.42	4.04	2.32	1.99	2.32	0.33	0.00	0.00	0.00	0.00	0.00	0.00	14.42
<b>SWN/Owner No.</b>	<b>JUL</b>	<b>AUG</b>	<b>SEPT</b>	<b>OCT</b>	<b>NOV</b>	<b>DEC</b>	<b>JAN</b>	<b>FEB</b>	<b>MAR</b>	<b>APR</b>	<b>MAY</b>	<b>JUN</b>	<b>TOTAL</b>
<b>Shell Oil Co NCWUP</b>	7.08	7.68	7.05	0.24	6.03	6.49	7.50	7.58	7.89	12.41	11.82	9.42	91.19
004S013W10K002S/DOM-GSP-R2M	0.00	0.00	0.00	0.00	0.00	0.10	0.24	0.11	1.02	6.08	5.88	5.05	18.48
004S013W09P001S/DR-18	0.00	0.00	0.00	0.00	0.00	0.00	0.00	0.00	0.00	0.00	0.00	0.07	0.07
004S013W09D001S/DR-7	0.00	0.00	0.00	0.00	0.00	0.00	0.00	0.00	0.00	0.00	0.00	0.07	0.07
004S013W10E006S/R-123	2.36	2.56	2.35	0.08	2.01	2.13	2.42	2.49	2.29	2.11	1.98	1.41	24.19
004S013W10E005S/R-122	2.36	2.56	2.35	0.08	2.01	2.13	2.42	2.49	2.29	2.11	1.98	1.41	24.19
004S013W10E007S/DD-3	2.36	2.56	2.35	0.08	2.01	2.13	2.42	2.49	2.29	2.11	1.98	1.41	24.19

## Appendix A - Groundwater Extractions Continued

SWN/Owner No.	JUL	AUG	SEPT	OCT	NOV	DEC	JAN	FEB	MAR	APR	MAY	JUN	TOTAL
<b>Southern California Edison Co.</b>	<b>3.37</b>	<b>2.49</b>	<b>1.95</b>	<b>2.22</b>	<b>1.23</b>	<b>0.79</b>	<b>0.69</b>	<b>1.56</b>	<b>1.45</b>	<b>2.26</b>	<b>2.03</b>	<b>2.39</b>	<b>22.43</b>
004S013W14A007S/MORR1	0.00	0.00	0.00	0.00	0.00	0.00	0.00	0.00	0.00	0.00	0.00	0.00	0.00
004S013W27A002S/HANSN	0.00	0.00	0.00	0.00	0.00	0.00	0.00	0.00	0.00	0.00	0.00	0.00	0.00
003S014W34B002S/FRESA	0.00	0.00	0.00	0.00	0.00	0.00	0.00	0.00	0.00	0.00	0.00	0.00	0.00
003S014W34N004S/SCECO	3.37	2.49	1.95	2.22	1.23	0.79	0.69	1.56	1.45	2.26	2.03	2.39	22.43

SWN/Owner No.	JUL	AUG	SEPT	OCT	NOV	DEC	JAN	FEB	MAR	APR	MAY	JUN	TOTAL
<b>Tesoro (Shell Carson Terminal)</b>	<b>0.00</b>	<b>0.00</b>	<b>0.00</b>	<b>0.00</b>	<b>0.00</b>	<b>0.00</b>	<b>0.00</b>	<b>0.00</b>	<b>0.00</b>	<b>0.00</b>	<b>0.00</b>	<b>0.00</b>	<b>0.00</b>
004S013W09P001S/DR-18	0.00	0.00	0.00	0.00	0.00	0.00	0.00	0.00	0.00	0.00	0.00	0.00	0.00
004S013W09D001S/DR-7	0.00	0.00	0.00	0.00	0.00	0.00	0.00	0.00	0.00	0.00	0.00	0.00	0.00
004S013W10E006S/R-123	0.00	0.00	0.00	0.00	0.00	0.00	0.00	0.00	0.00	0.00	0.00	0.00	0.00
004S013W10E005S/R-122	0.00	0.00	0.00	0.00	0.00	0.00	0.00	0.00	0.00	0.00	0.00	0.00	0.00
004S013W10E007S/DD-3	0.00	0.00	0.00	0.00	0.00	0.00	0.00	0.00	0.00	0.00	0.00	0.00	0.00

SWN/Owner No.	JUL	AUG	SEPT	OCT	NOV	DEC	JAN	FEB	MAR	APR	MAY	JUN	TOTAL
<b>Tesoro Refining &amp; Marketing Company</b>	<b>736.69</b>	<b>671.24</b>	<b>402.15</b>	<b>637.21</b>	<b>600.67</b>	<b>666.42</b>	<b>651.86</b>	<b>604.13</b>	<b>612.51</b>	<b>568.47</b>	<b>586.64</b>	<b>598.55</b>	<b>7,336.54</b>
None/None	190.32	266.55	178.79	230.77	229.75	240.09	268.64	209.77	222.93	214.15	216.74	198.05	2,666.55
None/None	309.67	167.91	0.11	186.38	171.82	214.60	183.72	223.74	222.91	183.44	185.74	218.32	2,268.36
None/None	0.00	1.84	3.69	2.98	3.29	5.17	3.94	3.82	5.24	3.94	4.11	5.07	43.09
004S013W16J005S/13	0.00	0.00	0.00	0.00	0.00	0.00	0.00	0.00	0.00	0.00	0.00	0.00	0.00
004S013W21L001S/3	0.00	0.00	0.00	0.00	0.00	0.00	0.00	0.00	0.00	0.00	0.00	0.00	0.00
004S013W34F007S/11	0.00	0.00	0.00	0.00	0.00	0.00	0.00	0.00	0.00	0.00	0.00	0.00	0.00
004S013W27N006S/10	157.81	161.13	148.79	143.43	126.25	134.71	135.38	112.13	102.66	107.07	118.06	114.21	1,561.63
004S013W22F007S/SRRP12	30.33	26.64	27.94	28.98	26.03	29.84	21.04	21.60	22.26	23.89	26.87	28.27	313.69
004S013W27M005S/9	0.00	0.00	0.00	0.00	0.00	0.00	0.00	0.00	0.00	0.00	0.00	0.00	0.00

## Appendix A - Groundwater Extractions Continued

SWN/Owner No.	JUL	AUG	SEPT	OCT	NOV	DEC	JAN	FEB	MAR	APR	MAY	JUN	TOTAL
<b>Tesoro Refining &amp; Marketing Company</b>	<b>736.69</b>	<b>671.24</b>	<b>402.15</b>	<b>637.21</b>	<b>600.67</b>	<b>666.42</b>	<b>651.86</b>	<b>604.13</b>	<b>612.51</b>	<b>568.47</b>	<b>586.64</b>	<b>598.55</b>	<b>7,336.54</b>
004S013W21H007S/12	0.00	0.00	0.00	0.00	0.00	0.00	0.00	0.00	0.00	0.00	0.00	0.00	0.00
004S013W16R002S/11	0.00	0.00	0.00	0.00	0.00	0.00	0.00	0.00	0.00	0.00	0.00	0.00	0.00
004S013W22F002S/HA001	0.00	0.00	0.00	0.00	0.00	0.00	0.00	0.00	0.00	0.00	0.00	0.00	0.00
004S013W22F001S/9	0.00	0.00	0.00	0.00	0.00	0.00	0.00	0.00	0.00	0.00	0.00	0.00	0.00
004S013W21H006S/8	0.00	0.00	0.00	0.00	0.00	0.00	0.00	0.00	0.00	0.00	0.00	0.00	0.00
004S013W21H005S/7	0.00	0.00	0.00	0.00	0.00	0.00	0.00	0.00	0.00	0.00	0.00	0.00	0.00
004S013W22E001S/5	0.00	0.00	0.00	0.00	0.00	0.00	0.00	0.00	0.00	0.00	0.00	0.00	0.00
004S013W21H002S/4	0.00	0.00	0.00	0.00	0.00	0.00	0.00	0.00	0.00	0.00	0.00	0.00	0.00
004S013W21J002S/10	48.56	47.17	42.83	44.67	43.53	42.01	39.14	33.07	36.51	35.98	35.12	34.63	483.22

SWN/Owner No.	JUL	AUG	SEPT	OCT	NOV	DEC	JAN	FEB	MAR	APR	MAY	JUN	TOTAL
<b>Torrance, City of</b>	<b>414.48</b>	<b>318.22</b>	<b>357.77</b>	<b>362.40</b>	<b>376.30</b>	<b>371.61</b>	<b>317.67</b>	<b>352.10</b>	<b>222.21</b>	<b>93.14</b>	<b>41.49</b>	<b>13.30</b>	<b>3,240.69</b>
003S014W34C003S/9	239.82	244.06	226.89	209.93	208.72	224.27	178.36	210.61	195.83	82.41	2.46	0.00	2,023.36
004S014W09A001S/MDR_2	174.66	74.16	130.88	152.47	167.58	147.34	139.31	141.49	26.38	10.73	39.03	13.30	1,217.33
004S014W14K001S/7	0.00	0.00	0.00	0.00	0.00	0.00	0.00	0.00	0.00	0.00	0.00	0.00	0.00
003S014W34C002S/6	0.00	0.00	0.00	0.00	0.00	0.00	0.00	0.00	0.00	0.00	0.00	0.00	0.00

SWN/Owner No.	JUL	AUG	SEPT	OCT	NOV	DEC	JAN	FEB	MAR	APR	MAY	JUN	TOTAL
<b>Yukelich, Mike Jr.</b>	<b>2.35</b>	<b>5.49</b>	<b>5.00</b>	<b>4.57</b>	<b>3.39</b>	<b>1.60</b>	<b>0.87</b>	<b>3.34</b>	<b>3.22</b>	<b>4.49</b>	<b>4.69</b>	<b>3.26</b>	<b>42.27</b>
004S013W19J006S/829M	2.35	5.49	5.00	4.57	3.39	1.60	0.87	3.34	3.22	4.49	4.69	3.26	42.27

SWN/Owner No.	JUL	AUG	SEPT	OCT	NOV	DEC	JAN	FEB	MAR	APR	MAY	JUN	TOTAL
<b>West Basin Brewer Desalter</b>	<b>111.62</b>	<b>110.38</b>	<b>98.60</b>	<b>87.63</b>	<b>99.90</b>	<b>73.40</b>	<b>59.84</b>	<b>87.35</b>	<b>81.80</b>	<b>88.07</b>	<b>92.98</b>	<b>78.72</b>	<b>1,070.29</b>
004S014W09A002S/232-03	111.62	110.38	98.60	87.63	99.90	73.40	59.84	87.35	81.80	88.07	92.98	78.72	1,070.29

# Appendix B

## Successions of Adjudicated Rights

June 2016

## Appendix B - Succession of Adjudicated Rights June 2016 (acre-feet)

<u>ABC NURSERY, INC</u>			SOLD TO CITY OF TORRANCE	-59.96	
SUCCESSOR TO JENKINS, HARRY C	1.80		TOTAL		0.00
SUCCESSOR TO TITLE, SIDNEY R AND CHARLOTTE W	13.60		<b>BAUMAN, GUS A</b>	<b>0.00</b>	0.00
SUCCESSOR TO VERBURG, WILLIAM AND CLARA B	6.70		TRANSFERRED TO PALOS VERDES BEGONIA FARM		
SUCCESSOR IN PART TO UNITED CALIFORNIA BANK	2.00		<b>BEGO CORPORATION</b>	<b>4.10</b>	
TOTAL		<u>24.10</u>	SOLD TO ESTATE OF GOLDA DELANEY	-4.10	
<b>ABELL, FRANK</b>	<b>1.80</b>		TOTAL		0.00
SOLD TO CITY OF INGLEWOOD	-1.80		<b>BELVIDERE MUTUAL WATER CO</b>	<b>33.40</b>	
TOTAL		0.00	SOLD TO CITY OF TORRANCE	-33.40	
<b>ALCAST FOUNDRY, ET AL</b>	<b>7.20</b>		TOTAL		0.00
SOLD TO CITY OF TORRANCE	-7.20		BLACK, DANA		
TOTAL		0.00	SUCCESSOR IN PART TO ESTATE OF JOHN GRANT	11.80	
<b>ALLIED CHEMICAL CORP</b>			SOLD TO ECOGAS, INC.	-11.80	
(SEE INDUSTRIAL CHEMICAL DIVISION, ALLIED CHEMICAL CORP)			TOTAL		0.00
ALLIED CORP			BOISE CASCADE BUILDING CO		
(FORMERLY: ALLIED CHEMICAL CORP)			SUCCESSOR IN PART TO JOUGHIN TORRANCE RANCH	16.92	
(NOW KNOWN AS ALLIED-SIGNAL, INC [EL SEGUNDO OFFICE])			SOLD TO INGLEWOOD, CITY OF	-16.92	
ALLIED-SIGNAL, INC (TORRANCE OFFICE)			TOTAL		0.00
SUCCESSOR TO GARRETT CORP, THE	22.50		<b>BOARD OF RETIREMENT-LOS ANGELES CO EMPL RET SYS</b>		
(MERGED WITH HONEYWELL INTERNATIONAL, INC AND NAME CHANGED TO HONEYWELL INTERNATIONAL, INC)	-22.50		SECOND WEST COAST BASIN JUDGMENT		
TOTAL		0.00	(NOW KNOWN AS LOS ANGELES COUNTY WESTERN AVE GOLF)		
ALLIED-SIGNAL, INC (EL SEGUNDO OFFICE)			BRANDSMA, MAYNARD		
(FORMERLY: ALLIED CORP)	<b>255.00</b>		SUCCESSOR IN PART TO ESTATE OF JOHN GRANT	11.80	
(MERGED WITH HONEYWELL INTERNATIONAL, INC AND NAME CHANGED TO HONEYWELL INTERNATIONAL, INC)	-255.00		SOLD TO HILLSIDE MEMORIAL PARK	-11.80	
TOTAL		0.00	TOTAL		0.00
ALWAG, HILARIO S AND EMMA			<b>BURKE, W F AND LOIS PRICE</b>	<b>9.50</b>	
SUCCESSOR TO T C NAVARRO	53.90		SOLD TO H S SCOTT	-9.50	
SUCCESSOR TO PEGGY SWICK	5.50		TOTAL		0.00
SOLD TO TORRANCE UNIFIED SCHOOL DISTRICT	-59.40		CBS INC		
TOTAL		0.00	FORMERLY COLUMBIA BROADCASTING SYS INC	<b>18.50</b>	
<b>AMERICAN PLANT GROWERS, INC</b>			SOLD TO MORAN, RONALD E	-9.00	
SECOND WEST COAST BASIN JUDGMENT	2.60		TOTAL		9.50
SUCCESSOR TO BEN CLUFF DAIRY	7.40		CALIFORNIA, STATE OF		
SOLD TO SUNRISE GROWERS, INC	-10.00		SUCCESSOR TO ROBERT L FULLILOVE	1.00	
SUCCESSOR TO SUNRISE GROWERS, INC	10.00		SUCCESSOR TO JOE MONIZ JR	2.20	
SOLD TO VUKELICH MIKE, JR.	-10.00		SUCCESSOR IN PART TO KELLY PIPE CO	16.30	
TOTAL		0.00	SUCCESSOR IN PART TO FLAVIO RODRIGUEZ	4.00	
<b>ANDERSON, REMBERT C</b>	<b>80.50</b>		SUCCESSOR IN PART TO A H SMITH (SAM SURBER AND FREDA SMITH)	2.60	
SOLD TO SPARKLETTS DRINKING WATER CORP	-80.50		SOLD TO SPARKLETTS DRINKING WATER CORP	-26.10	
TOTAL		0.00	TOTAL		0.00
<b>AQUA CAPITAL MANAGEMENT LP</b>			<b>CALIFORNIA WATER SERVICE CO</b>	<b>3,071.00</b>	
SUCCESSOR TO ECOGAS	11.80		SUCCESSOR TO PALOS VERDES WATER CO	999.00	
TOTAL		<u>11.80</u>	TOTAL		<u>4,070.00</u>
<b>ASAHI FANCY KOI, INC</b>			<b>CALIFORNIA WATER SERVICE CO (DOMINGUEZ)</b>		
SUCCESSOR IN PART TO JAKE ENGELSMA	2.00	<u>2.00</u>	DOMINGUEZ WATER CO MERGED WITH AND INTO CALIFORNIA WATER SERVICE CO, WATERMASTER ACCOUNT KNOWN AS CALIFORNIA WATER SERVICE CO (DOMINGUEZ)	10,162.45	
ASSOCIATED SOUTHERN INVESTMENT CO (FORMERLY EDISON SECURITIES CO)	<b>46.70</b>		SUCCESSOR IN PART TO HONEYWELL INTERNATIONAL INC	255.00	
SOLD TO SOUTHERN CALIFORNIA EDISON CO	-46.70		TOTAL		<u>10,417.45</u>
TOTAL		0.00	<b>CARSON ESTATE CO</b>	<b>130.00</b>	
ATLANTIC RICHFIELD CO (FORMERLY RICHFIELD OIL CO)	<b>4,428.00</b>		SOLD TO DOMINGUEZ WATER CORP	-130.00	
SUCCESSOR TO MANVILLE SALES CORP	881.00		TOTAL		0.00
SOLD TO TESORO REFINING AND MARKETING COMPANY LLC (6-13-2013)	-5,309.00		<b>CARSON-HARBOR VILLAGE MOBILE HOME PARK</b>		
TOTAL		0.00	SUCCESSOR TO ETCEMENDY, CAROLINE, ESTATE OF	8.20	
<b>AUTOMATION INDUSTRIES, INC-HARRIS TUBE</b>			SOLD TO MONTROSE CHEMICAL CORPORATION OF CALIFORNIA (9-28-2011)	-1.20	
SUCCESSOR TO HARRIS TUBE, INC	0.70	<u>0.70</u>	TOTAL		<u>7.00</u>
<b>BALLMAN, ROSEMARY N</b>	<b>7.00</b>		CARSON-MADRONA CO		
SOLD TO UNITED CALIFORNIA BANK	-7.00		SUCCESSOR TO CHANSLOR-WESTERN OIL AND DEVELOP CO	104.00	<u>104.00</u>
TOTAL		0.00	CENTURY BUILDERS		
<b>BANK OF AMERICA NATIONAL TRUST AND SAVINGS ASSOCIATION (TRUST BI-51)</b>	<b>0.10</b>		SUCCESSOR TO UNION NURSERY, INC	4.70	4.70
RELEASED TO MICHAEL L ROCKWELL	-0.10		<b>CHANDLERS PALOS VERDES SAND AND GRAVEL CORP</b>		
TOTAL		0.00	SECOND WEST COAST BASIN JUDGMENT	95.20	
BARCLAY HOLLANDER CORP (FORMERLY BARCLAY HOLLANDER CURCI INC)			SUCCESSOR TO SOUTHWESTERN PORTLAND CEMENT CO	15.00	
SUCCESSOR IN PART TO JOUGHIN TORRANCE RANCH	3.33		SUCCESSOR TO TORRANCE SAND AND GRAVEL CORP	184.00	
SOLD TO TORRANCE, CITY OF	-3.33		SOLD TO ROLLING HILLS COUNTRY CLUB	-290.00	
TOTAL		0.00	TOTAL		4.20
BARCLAY HOLLANDER CURCI INC (NOW KNOWN AS BARCLAY HOLLANDER CORP)			<b>CHANSLOR-WESTERN OIL AND DEVELOPMENT CO</b>	<b>104.00</b>	
BARCLAY, RICHARD AND R A WATT			(FORMERLY CHANSLOR-CANFIELD MIDWAY OIL CO)		
SUCCESSORS TO EMMA J OSBORN	32.66		SOLD TO CARSON-MADRONA CO	-104.00	
SUCCESSORS IN PART TO ISABELA J GRANZ ESTATE	13.55		TOTAL		0.00
SUCCESSORS IN PART TO GEORGE R MURDOCK	13.75		CHEMICALS CO OF ALLIED CORP (FORMERLY INDUSTRIAL CHEMICAL DIVISION, ALLIED CHEMICAL CORP) (NOW KNOWN AS ALLIED CORP)		

CHEVRON USA INC	4,541.70		TOTAL		0.00
(FORMERLY STANDARD OIL CO OF CALIFORNIA)			ECOGAS, INC.		
SUBJECT TO LONG TERM LEASE FROM	59.60		SUCCESSOR TO BLACK, DANA	11.80	
ISABELLA GRANZ PER JUDGEMENT			SOLD TO AQUA CAPITAL MANAGEMENT LP	-11.80	
TOTAL		4,601.30	TOTAL		0.00
<b>CHRISTIE, CLEM, DON C FOHL AND LEON LARSON</b>	<b>0.02</b>		<b>ECO SERVICES OPERATIONS LLC</b>	521.00	
(TRUSTEES OF WILMINGTON CEMETERY ASSOC)			(FORMERLY SOLVAY USA INC.)		
ABANDONED WATER RIGHT	-0.02		TOTAL		<u>521.00</u>
TOTAL		0.00	<b>EDISON SECURITIES CO</b>		
CHURCHILL DOWNS CALIFORNIA CO			(NOW KNOWN AS ASSOCIATED SOUTHERN INVESTMENT CO)		
SUCCESSOR TO HOLLYWOOD PARK	282.00		<b>EL SEGUNDO, CITY OF</b>	953.00	<u>953.00</u>
OPERATING CO			ENGELSMA, JAKE		
SOLD TO HOLLYWOOD PARK LAND COMPANY, LLC	-282.00		SUCCESSOR TO WILBUR HORNSTRA	14.10	
TOTAL		0.00	SOLD TO ASAHI FANCY KOI, INC	-2.00	
CLUFF, BEN DAIRY			TRANSFERRED TO SUSAN ENGELSMA, TRUSTEE ET AL	-12.10	
SUCCESSOR TO EDWARD AND EMILY COST	7.40		TOTAL		0.00
SOLD TO AMERICAN PLANT GROWERS, INC	-7.40		ENGELSMA, SUSAN; TRUSTEE OF THE SUSAN ENGELSMA TRUST		
TOTAL		0.00	TRANSFERRED FROM JAKE ENGLESMA	12.10	<u>12.10</u>
COAST FOREST PRODUCTS			EQUILON ENTERPRISES, LLC		
SUCCESSOR TO SOUTHWEST STEEL ROLLING MILLS	3.40		SUCCESSOR TO TEXACO REFINING AND MARKETING, INC	3,432.00	
SOLD TO GEORGIA-PACIFIC CORP	-3.40		SOLD TO SHELL OIL PRODUCTS US	-3,432.00	
TOTAL		0.00	TOTAL		0.00
COASTLINE CHURCH OF CHRIST			<b>ETCHEMENDY, CAROLINE, ESTATE OF</b>	<b>8.20</b>	
SUCCESSOR TO LERMENS, EVELYN	0.70	<u>0.70</u>	SOLD TO CARSON-HARBOR VILLAGE MOBILE HOME PARK	-8.20	
COLLISTER, CAMERON			TOTAL		0.00
SUCCESSOR TO JOUGHIN TORRANCE RANCH QUITCLAIMED TO NORMANDIE PARK	-136.82		EVERGREEN AMERICA CORP		
TOTAL		0.00	SUCCESSOR TO POTHOS CORP		<u>5.40</u>
<b>COLUMBIA BROADCASTING SYSTEM, INC</b>			<b>EWING, CARMELITA ROSECRANS</b>	<b>91.30</b>	
(NOW KNOWN AS CBS INC)			SOLD TO SOUTHERN CALIFORNIA WATER CO	-91.30	
CONOCOPHILLIPS COMPANY			TOTAL		0.00
SUCCESSOR TO TOSCO CORPORATION (NOW KNOWN AS PHILLIPS 66 COMPANY)			EWING, NED ET AL		
<b>COST, EDWARD AND EMILY</b>	<b>7.40</b>		SUCCESSOR IN PART TO ISABEL J GRANZ	6.50	
SOLD TO BEN CLUFF DAIRY	-7.40		ESTATE		
TOTAL		0.00	SOLD TO R A WATT, INC	-6.50	
<b>CURTIS, OWEN W</b>	<b>3.80</b>		TOTAL		0.00
SOLD TO SOUTHERN CALIFORNIA WATER CO	-3.44		FLESH, LESLIE R AND ANDOR PASTERNAK, ET AL		
TOTAL		0.36	SUCCESSORS TO ALFRED D AND RUTH SEABACK	3.50	
<b>DEL AMO ESTATE CO</b>	<b>121.00</b>		SOLD TO STANLEY C LAGERLOF	-3.50	
SOLD TO DOMINGUEZ WATER CORP	-121.00		TOTAL		0.00
TOTAL		0.00	<b>FLETCHER OIL AND REFINING CO</b>		
<b>DELANEY, GOLDA, ESTATE OF</b>			(FORMERLY FLETCHER OIL CO)	<b>86.30</b>	
(FORMERLY ARTHUR J DELANEY)			SUCCESSOR TO FLETCHER, ROBERT G ET AL	3.70	
SUCCESSOR TO BEGO CORP	4.10	<u>4.10</u>	SOLD TO WESTERN WATER CO	-90.00	
DENNIS, ESTHER M SHEETS			TOTAL		0.00
(FORMERLY ESTHER M SHEETS)	<b>5.50</b>		FLETCHER, ROBERT G, DANIEL S, AND WILFRED O		
SOLD TO TORRANCE, CITY OF	-5.50		SUCCESSOR TO FRED A JUNGQUIST	3.70	
TOTAL		0.00	SOLD TO FLETCHER OIL AND REFINING CO	-3.70	
<b>DESSER ENTERPRISES, INC.</b>			TOTAL		0.00
SECOND WEST COAST BASIN JUDGMENT	0.00	0.00	FUJIMOTO, SAMUEL R		
SOLD TO MYRON Z. CHLAVIN AND NETTIE DESSER TRUST AND JHD PROPERTIES, LLC	-0.00	0.00	(FORMERLY KNOWN AS FUJIMOTO, SAMUEL R AND RAYMOND S)		
<b>DOMINGUEZ ESTATE CO</b>	<b>254.00</b>		SUCCESSOR IN PART TO H J AND DAISY	20.00	
SOLD TO DOMINGUEZ WATER CORP	-254.00		EARLY		
TOTAL		0.00	SOLD TO FUJIMOTO, SAMUEL R, STEVEN T AND JON T JOINT TENANTS	-20.00	
<b>DOMINGUEZ WATER CORP</b>			TOTAL		0.00
(NOW KNOWN AS DOMINGUEZ WATER CO)			FUJIMOTO, SAMUEL R AND RAYMOND S		
DOMINGUEZ WATER CO	<b>9,477.80</b>		(SEE FUJIMOTO, SAMUEL R)		
(FORMERLY KNOWN AS DOMINGUEZ WATER CORP)			<b>FUJIMOTO, SAMUEL R, STEVEN T AND JON K, JOINT TENANTS</b>		
SUCCESSOR TO CARSON ESTATE CO	130.00		SUCCESSOR TO FUJIMOTO, SAMUEL R	20.00	20.00
SUCCESSOR TO DEL AMO ESTATE CO	121.00		<b>FULLILOVE, ROBERT L</b>	<b>1.00</b>	
SUCCESSOR TO DOMINGUEZ ESTATE CO	254.00		SOLD TO STATE OF CALIFORNIA	-1.00	
SUCCESSOR TO DON WILSON BUILDERS	32.60		TOTAL		0.00
SUCCESSOR TO HEYDENBECK, JEANETTE R	0.70		FUTURA INDUSTRIES, INC		
SUCCESSOR TO NAKANO, KIKUNO, ET AL	19.30		SUCCESSOR TO SPANISH AMERICAN	44.40	
SUCCESSOR IN PART TO H J EARLY	91.00		INSTITUTE		
SUCCESSOR IN PART TO R A WATT, INC	61.85		SOLD TO KAUFMAN, LEO AND SHELDON BAER	-44.40	
SOLD IN PART TO WATSON LAND CO	-37.60		TOTAL		0.00
SUCCESSOR TO THORPE, GREGORY	11.80		GARRETT CORP, THE		
DOMINGUEZ WATER CO MERGED WITH AND INTO CALIFORNIA WATER SERVICE CO, WATERMASTER ACCOUNT KNOWN AS CALIFORNIA WATER SERVICE CO (DOMINGUEZ)	-10,162.45		SUCCESSOR TO SHINODA BROTHERS INC	22.50	
TOTAL		0.00	TRANSFERRED TO ALLIED-SIGNAL INC (TORRANCE OFFICE)	-22.50	
DON WILSON BUILDERS			TOTAL		0.00
SUCCESSORS TO KASUO, ISAMU, AND YOSHIKI R KITA	32.60		GATX TANK STORAGE TERMINALS CORP		
SOLD TO DOMINGUEZ WATER CORP	-32.60		SUCCESSOR TO PHILLIPS PETROLEUM CO	167.00	
TOTAL		0.00	SOLD TO KINDER MORGAN LIQUIDS TERMINALS, LLC.	-167.00	
DOUGLAS AIRCRAFT CO, INC			TOTAL		0.00
(SEE MCDONNELL DOUGLAS CORP)			GEORGIA-PACIFIC CORP		
<b>EARLY, H J AND DAISY</b>	<b>111.00</b>		SUCCESSOR TO COAST FOREST PRODUCTS	3.40	
SOLD TO DOMINGUEZ WATER CORP	-91.00		SOLD TO INGLEWOOD, CITY OF	-3.40	
SOLD TO SAMUEL R AND RAYMOND S	-20.00		TOTAL		0.00
FUJIMOTO			GERAHUE LAND CO		
			SUCCESSOR AND ASSIGNEE FOR A S	11.90	

JOHNSTON DRILL CO			THE CORP NAME CHANGED TO HONEYWELL	
ABANDONED WATER RIGHT	-11.90		INTERNATIONAL INC	277.50
TOTAL		0.00	SOLD IN PART TO CALIFORNIA WATER	-255.00
<b>GILLINGHAM, FLORENCE R, ET AL</b>	<b>2.40</b>	<b>2.40</b>	SERVICE CO (DOMINGUEZ)	
<b>GOLDEN STATE WATER COMPANY</b>			TOTAL	<b>22.50</b>
SUCCESSOR TO SOUTHERN CALIFORNIA			<b>HONOLD, KRISTIN BRANDSMA</b>	
WATER COMPANY (NAME CHANGE)	7,502.24	<u>7,502.24</u>	SUCCESSOR IN PART TO ESTATE OF JOHN	11.80
<b>GONZALES, FELIPE AND GABRIELA</b>			GRANT	<b>11.80</b>
(NOW KNOWN AS GONZALES, GABRIELA AND			<b>HORNSTRA, WILBUR</b>	<b>14.10</b>
MARIA R)			SOLD TO JAKE ENGELSMA	-14.10
GONZALES, GABRIELA AND MARIA R			TOTAL	0.00
(FORMERLY GONZALES, FELIPE AND	<b>34.30</b>		<b>HUGHES AIRCRAFT</b>	0.00
GABRIELA)		0.00	(SEE 1981 JUDGMENT ORDER)	0.00
SOLD TO TORRANCE, CITY OF	-34.30		HUNT, DONALD G	
TOTAL		0.00	SUCCESSOR TO JAMES SCANDA	1.90
GRAND LAND CO			SOLD TO KENICHI INOSE	-1.90
SUCCESSOR IN PART TO SMITH, A H, ET AL	5.70		TOTAL	0.00
ABANDONED WATER RIGHTS 1961-62	-5.70		INDUSTRIAL CHEMICAL DIVISION, ALLIED CHEMICAL	
TOTAL		0.00	CORP	
<b>GRANT, JOHN, ESTATE OF</b>	<b>59.00</b>		(FORMERLY ALLIED CHEMICAL CORP, GEN	
APPORTIONED IN PART TO BLACK, DANA	-11.80		CHEMICAL CO)	
APPORTIONED IN PART TO BRANDSMA,	-11.80		(NOW KNOWN AS ALLIED CORP)	
MAYNARD			<b>INGLEWOOD, CITY OF</b>	<b>4,382.00</b>
APPORTIONED IN PART TO HONOLD, KRISTIN	-11.80		SUCCESSOR TO ABELL, FRANK	1.80
BRANDSMA			SUCCESSOR TO BOISE CASCADE BUILDING	16.92
APPORTIONED IN PART TO THORPE,	-11.80		CO	
GREGORY			SUCCESSOR TO GEORGIA-PACIFIC CORP	3.40
APPORTIONED IN PART TO THORPE,	-11.80		SUCCESSOR TO KAUFMAN, LEO AND	44.40
TERRENCE			SHELDON BAER	
TOTAL		0.00	SUCCESSOR IN PART TO GEORGE R	1.37
<b>GRANZ, ISABELA J</b>	<b>380.00</b>		MURDOCK	
PARTITIONED TO HEIRS:			TOTAL	<b>4,449.89</b>
ISABELA J GRANZ ESTATE	-33.80		INOSE ET AL	
JOUGHIN TORRANCE RANCH	-212.42		(KEN K INOSE, KAY K INOSE, KIYOKO YOSHIYAMA,	
GEORGE R MURDOCK	-15.12		KENICHI INOSE, KAYOKO K INOSE AND	
EMMA J OSBORN	-32.66		DAVID T NAKATANI, TRUSTEE OF THE INOSE CHILDREN	
SUBJECT TO LONG TERM LEASE TO:	-59.60		TRUST U/D/T DATE 11/1/78)	
STANDARD OIL CO OF CALIF			(FORMERLY INOSE, KENICHI)	
SUPERIOR OIL CO	-26.40		SUCCESSOR TO HUNT, DONALD G	1.90
TOTAL		0.00	SUCCESSOR TO THAXTER, RALPH AND LOIS A	3.50
GRANZ, ISABELA J, ESTATE OF			LENOIR	
SUCCESSOR IN PART TO ISABELA J GRANZ	33.80		SOLD TO POTHOS CORP	-5.40
SOLD IN PART TO RICHARD BARCLAY AND R A	-13.55		TOTAL	0.00
WATT			INOSE, KENICHI	
SOLD IN PART TO NED EWING, ET AL	-6.50		(NOW KNOWN AS INOSE ET AL)	
SOLD IN PART TO R A WATT, INC	-13.75		JENKINS, HARRY C	
TOTAL		0.00	SUCCESSOR TO H L PERRY	1.80
HARRIS, R AND L			SOLD TO ABC NURSERY, INC	-1.80
SUCCESSOR TO LAWRENCE I LISTON	0.70		TOTAL	0.00
DISCLAIMED WATER RIGHT	-0.70		<b>JOHNS-MANVILLE PRODUCTS CORP</b>	
TOTAL		0.00	(SEE JOHNS-MANVILLE SALES CORP)	
HARRIS TUBE, INC			JOHNS-MANVILLE SALES CORP	
SUCCESSOR IN PART TO B ROBINSON AND	0.70		(FORMERLY: JOHNS-MANVILLE PRODUCTS CORP	
ASSOCIATES			MANVILLE SERVICE CORP)	
TRANSFERRED TO AUTOMATION IND INC-	-0.70		(NOW KNOWN AS MANVILLE SALES CORP)	
HARRIS TUBE			TOTAL	0.00
TOTAL		0.00	<b>JOHNSTON, A S, DRILLING CO</b>	<b>11.90</b>
<b>HAWTHORNE, CITY OF</b>	<b>1,882.00</b>	<b>1,882.00</b>	ASSIGNED TO GERAHUE LAND CO	-11.90
<b>HENDERSON, BEATRICE M</b>	<b>1.30</b>		TOTAL	0.00
ABANDONED WATER RIGHT	-1.30		<b>JONES, ANNA MAE</b>	<b>50.20</b>
TOTAL		0.00	SOLD TO CITY OF TORRANCE	-50.20
HEYDENBECK, JEANETTE R			TOTAL	0.00
(FORMERLY JEANETTE R REIFSNYDER)	<b>0.70</b>		JOUGHIN TORRANCE RANCH	
SOLD TO DOMINGUEZ WATER CORP	-0.70		SUCCESSOR IN PART TO ISABELA J GRANZ	212.42
TOTAL		0.00	SOLD IN PART TO BARCLAY HOLLANDER	-3.33
<b>HILLSIDE MEMORIAL PARK</b>	<b>16.70</b>		CURCI INC	
SUCCESSOR TO SANTA FE LAND	39.50		SOLD IN PART TO BOISE CASCADE BUILDING	-16.92
IMPROVEMENT CO			CO	
SUCCESSOR TO SIGMUND S AND LIONEL S	12.50		SOLD IN PART TO COLLISTER, CAMERON	-136.82
HOCKWALD			SOLD IN PART TO R A WATT, INC	-55.35
SUCCESSOR TO THORPE, TERRENCE	11.80		TOTAL	0.00
SUCCESSOR TO BRANDSMA, MAYNARD	11.80		JUNGQUIST, FRED A	
TOTAL		<u>92.30</u>	(FORMERLY KATHERINE P WOODMAN)	<b>3.70</b>
<b>HOCKWALD, SIGMUND S AND LIONEL S</b>	<b>12.50</b>		SOLD TO ROBERT G FLETCHER ET AL	-3.70
SOLD TO HILLSIDE MEMORIAL PARK	-12.50		TOTAL	0.00
TOTAL		0.00	KAHLERT, ET AL	
HOLLYWOOD PARK INC			AND SUCCESSOR IN PART TO KELLY PIPE CO	18.90
(FORMERLY HOLLYWOOD TURF CLUB)			SOLD TO SPARKLETTS DRINKING WATER	-18.90
(NOW KNOWN AS HOLLYWOOD PARK OPERATING CO)			CORP	
<b>HOLLYWOOD PARK LAND COMPANY,LLC</b>			TOTAL	0.00
SUCCESSOR TO CHURCHILL DOWNS	282.00	<u>282.00</u>	KAUFMAN, LEO AND SHELDON BAER	
CALIFORNIA COMPANY			SUCCESSOR TO FUTURA INDUSTRIES INC	44.40
HOLLYWOOD PARK OPERATING CO			SOLD TO CITY OF INGLEWOOD	-44.40
(FORMERLY HOLLYWOOD PARK INC)	<b>282.00</b>		TOTAL	0.00
SOLD TO CHURCHILL DOWNS CALIFORNIA CO	-282.00		<b>KELLY PIPE CO</b>	<b>49.00</b>
TOTAL		0.00	SOLD IN PART TO STATE OF CALIFORNIA	-16.30
<b>HOLLYWOOD TURF CLUB</b>			SOLD IN PART TO KAHLERT, ET AL	-18.90
(NOW KNOWN AS HOLLYWOOD PARK INC)			SOLD IN PART TO SPARKLETTS DRINKING	-13.80
<b>HONEYWELL INTERNATIONAL INC</b>			WATER CORP	
MERGED WITH ALLIED-SIGNAL INC (EL			TOTAL	0.00
SEGUNDO AND TORRANCE OFFICES) AND			KINDER MORGAN LIQUIDS TERMINALS, LLC.	

West Coast Basin Watermaster

SUCCESSOR TO GATX TANK STORAGE TERMINALS CORP.	167.00	167.00	<b>MARTIN BROTHERS BOX CO, INC</b> SOLD TO SOUTHWEST STEEL ROLLING MILLS TOTAL	3.40 -3.40	0.00
<i>KITA, ISAMU, KASUO, AND YOSHIKI R</i> SOLD TO DON WILSON BUILDERS TOTAL	32.60 -32.60	0.00	<b>MAYFLOWER NURSERIES</b> (HERBERT SAKAYE FUKUWAI, DBA)	0.00	0.00
<b>KURTZ, GLADYS</b> SOLD TO SPARKLETTS DRINKING WATER CORP TOTAL	3.50 -3.50	0.00	<b>MCCANDLESS, JAMES</b> SOLD TO SPARKLETTS DRINKING WATER CORP TOTAL	6.70 -6.70	0.00
LAGERLOF, STANLEY C SUCCESSOR TO LESLIE R FLESCHE AND ANDOR PASTERNAK, ET AL SOLD TO SHELL OIL CO TOTAL	3.50 -3.50	0.00	MCDONNELL DOUGLAS CORP (FORMERLY DOUGLAS AIRCRAFT, CO INC) LONG TERM LEASE FROM UNITED STATES NAVY DEPARTMENT	1.70	1.70
<b>LAWLER, JAMES K</b> SOLD TO B ROBINSON AND ASSOC TOTAL	3.10 -3.10	0.00	MOBIL OIL CORP (FORMERLY SOCONY MOBIL OIL CO) SUCCESSOR TO SUPERIOR OIL CO TOTAL	2,570.00 26.40	2,596.40
LERMENS, EVELYN (FORMERLY LERMENS, ALFRED) SOLD TO COASTLINE CHURCH OF CHRIST TOTAL	0.70 -0.70	0.00	<b>MONETA MUTUAL WATER CO</b> SOLD TO CITY OF TORRANCE TOTAL	916.00 -916.00	0.00
<b>LEUZINGER, EMMA L</b>	1.40	1.40	<b>MONIZ, JOE JR</b> SOLD TO STATE OF CALIFORNIA TOTAL	2.20 -2.20	0.00
<b>LISTON, LAWRENCE</b> SOLD TO R AND L HARRIS TOTAL	0.70 -0.70	0.00	<b>MONTROSE CHEMICAL CORPORATION OF CALIFORNIA</b> SUCCESSOR TO CARSON-HARBOR VILLAGE MOBILE HOME PARK (9-28-2011)	1.20	1.20
LITTLE, WILLIAM SUCCESSOR TO ROCKWELL, MICHAEL SOLD TO WATT INDUSTRIAL PROPERTIES TOTAL	0.10 -0.10	0.00	MORAN, RONALD E SUCCESSOR IN PART TO COLUMBIA BROADCASTING SYSTEM, INC SOLD TO CITY OF TORRANCE TOTAL	9.00 -9.00	0.00
LOMITA, CITY OF WATER SYSTEM (WWD 13) (FORMERLY LOS ANGELES COUNTY WATERWORKS DISTRICT NO 13)	1,352.00	1,352.00	<b>MORI, ROY H AND KENJI</b> SECOND WEST COAST BASIN JUDGMENT SOLD TO NOZAKI, SUMIKICHI TOTAL	5.60 -2.00	3.60
<b>LONG BEACH, CITY OF</b>	0.70	0.70	MURDOCK, GEORGE R SUCCESSOR IN PART TO ISABELA J GRANZ SOLD IN PART TO R BARCLAY AND R A WATT SOLD IN PART TO CITY OF INGLEWOOD TOTAL	15.12 -13.75 -1.37	0.00
<b>LOPES, FRANK</b>	3.70	3.70	<b>MYRON Z. CHLAVIN AND NETTIE DESSER TRUST AND JHD PROPERTIES, LLC</b> SUCCESSOR TO DESSER ENTERPRISES, INC.	0.00	0.00
<b>LOS ANGELES, CITY OF</b>	1,503.00	1,503.00	<b>NAKANO, KIKUNO, ET AL</b> SOLD TO DOMINGUEZ WATER CORP TOTAL	19.30 -19.30	0.00
<b>LOS ANGELES COUNTY-ALONDRA PARK</b> SUCCESSOR TO LOS ANGELES COUNTY FLOOD CONTROL DIST MERGED WITH LOS ANGELES COUNTY CHESTER L. WASHINGTON GOLF COURSE UNDER NEW NAME "LOS ANGELES COUNTY RECREATION FACILITIES" TOTAL	28.70 39.00 -67.70	0.00	<b>NAVARRO, T C</b> SOLD TO HILARIO S AND EMMA ALWAG TOTAL	53.90 -53.90	0.00
LOS ANGELES COUNTY CHESTER L WASHINGTON GOLF COURSE (FORMERLY LOS ANGELES COUNTY WESTERN AVENUE GOLF COURSE) MERGED WITH LOS ANGELES COUNTY ALONDRA PARK UNDER NEW NAME "LOS ANGELES COUNTY RECREATION FACILITIES" TOTAL	296.00 -296.00	0.00	<b>NORAIR, A DIVISION OF NORTHPROP CORP</b> (FORMERLY KNOWN AS NORTHPROP AIRCRAFT, INC) (NOW KNOWN AS NORTHPROP CORP)		
<b>LOS ANGELES COUNTY FLOOD CONTROL DISTRICT</b> SUCCESSOR IN PART TO A H SMITH, ET AL SOLD TO LOS ANGELES COUNTY - ALONDRA PARK TOTAL	37.60 1.40 -39.00	0.00	NORMANDIE PARK SUCCESSOR TO COLLISTER, CAMERON SOLD TO CITY OF TORRANCE TOTAL	136.82 -136.82	0.00
<b>LOS ANGELES COUNTY RECREATION FACILITIES</b> MERGER OF LOS ANGELES COUNTY ALONDRA PARK, AND LOS ANGELES COUNTY CHESTER L. WASHINGTON GOLF COURSE TOTAL	67.70 296.00	363.70	NORTHROP CORP (FORMERLY KNOWN AS NORAIR, A DIV OF NORTHPROP CORP)	38.15	38.15
<b>LOS ANGELES COUNTY SANITATION DIST NO 2</b>	102.00	102.00	<b>NOZAKI, SUMIKICHI</b> SUCCESSOR IN PART TO MORI, ROY H AND KENJI SUCCESSOR IN PART TO UNITED CALIFORNIA BANK TOTAL	2.00 5.00	7.00
<b>LOS ANGELES COUNTY WATERWORKS DISTRICT NO 13</b> (NOW KNOWN AS LOMITA, CITY OF WATER SYSTEM WWD 13)			OSBORN, EMMA J SUCCESSOR IN PART TO ISABELA J GRANZ SOLD TO R BARCLAY AND R A WATT TOTAL	32.66 -32.66	0.00
<b>LOS ANGELES COUNTY WATERWORKS DISTRICT NO 22</b> SOLD TO SOUTHERN CALIF WATER CO TOTAL	551.00 -551.00	0.00	<b>OTANI, CHISATO</b>	0.00	0.00
LOS ANGELES COUNTY WESTERN AVE GOLF COURSE (FORMERLY BOARD OF RETIREMENT OF THE LOS ANGELES COUNTY EMPLOYEES RETIREMENT SYSTEM) (NOW KNOWN AS LOS ANGELES CHESTER L WASH GOLF)			<b>PACIFIC CREST CEMETERY CO</b> SUCCESSOR TO H S SCOTT SUCCESSOR TO WADA, KAORU AND SATORU TOTAL	17.70 9.50 12.20	39.40
<b>LOYOLA MARYMOUNT UNIVERSITY</b> (FORMERLY LOYOLA UNIVERSITY OF LOS ANGELES)	48.10	48.10	<b>PALOS VERDES BEGONIA FARM</b> SUCCESSOR TO GUS A BAUMAN	0.00	0.00
<b>MANHATTAN BEACH, CITY OF</b> MANVILLE SALES CORP (FORMERLY: JOHNS-MANVILLE SALES CORP JOHNS-MANVILLE PRODUCTS CORP MANVILLE SERVICE) SOLD TO ATLANTIC RICHFIELD CO TOTAL	1,131.20 881.00 -881.00	1,131.20	<b>PALOS VERDES WATER CO</b> SOLD TO CALIFORNIA WATER SERVICE CO TOTAL	999.00 -999.00	0.00
MANVILLE SERVICE CORP (SEE JOHNS-MANVILLE SALES CORP)			<b>PARK WATER CO</b> SOLD TO SOUTHERN CALIFORNIA WATER TOTAL	160.00 -160.00	0.00
			<b>PARKE, ZORAIDA</b> SOLD TO H L PERRY TOTAL	1.80 -1.80	0.00
			<b>PASCHKE, WILLIAM JOSEPH</b> ABANDONED WATER RIGHT TOTAL	0.02 -0.02	0.00
			PERRY, H L		



SUCCESSOR TO ZORAIDA PARKE	1.80		TOTAL		1,019.50
SOLD TO HARRY C JENKINS	-1.80		SHELL OIL PRODUCTS US		
TOTAL		0.00	SUCCESSOR TO EQUILON ENTERPRISES, LLC	3,432.00	
PHILLIPS 66 COMPANY			SOLD TO TESORO REFINING AND MARKETING		
(FORMERLY CONOCOPHILLIPS COMPANY)	6,170.00		COMPANY	-3,432.00	
PHILLIPS PETROLEUM CO			TOTAL		0.00
(FORMERLY TIDEWATER OIL CO)	167.00		SHINODA BROTHERS, INC		
SOLD TO GATX TANK STORAGE TERM CORP	-167.00		SECOND WEST COAST BASIN JUDGMENT	22.50	
TOTAL		6,170.00	SOLD TO GARRETT CORP, THE	-22.50	
POTHOS CORP			TOTAL		0.00
SUCCESSOR TO INOSE ET AL	5.40		SMITH, A H,(SAM SURBER AND FRED A SMITH)	9.70	
SOLD TO EVERGREEN AMERICA CORP	-5.40		SOLD IN PART TO STATE OF CALIFORNIA	-2.60	
TOTAL		0.00	SOLD IN PART TO GRAND LAND CO	-5.70	
REHOR, JOSEPHINE P	2.20	2.20	SOLD IN PART TO L A CO FLOOD CONTROL	-1.40	
REIFSNYDER, JEANNETTE R			DISTRICT		
(NOW KNOWN AS JEANNETTE R HEYDENBECK)			TOTAL		0.00
RHODIA, INC			SOCONY MOBIL OIL CO		
(NOW KNOWN AS SOLVAY USA INC.)			(SEE MOBIL OIL CO)	10.40	
SUCCESSOR TO RHONE-POULENC INC			SOLVAY USA INC.		
RHONE-POULENE BASIC CHEMICALS CO			(NOW KNOWN AS ECO SERVICES		
SUCCESSOR TO STAUFFER CHEMICAL CO	521.00		OPERATIONS LLC)		
SOLD TO RHONE-POULENE INC	-521.00		SOUTHERN CALIFORNIA EDISON CO		
TOTAL		0.00	SUCCESSOR TO ASSOCIATED SOUTHERN	46.70	
			INVESTMENT CO		
RHONE-POULENC INC			TOTAL		57.10
SUCCESSOR TO RHONE-POULENC, BASIC	521.00		SOUTHERN CALIFORNIA WATER CO	6,265.30	
CHEMICALS CO			SUCCESSOR TO EWING, CARMELITA	91.30	
SOLD TO RHODIA, INC	-521.00		ROSECRANS		
TOTAL		0.00	SUCCESSOR TO LOS ANGELES COUNTY	551.00	
RICHFIELD OIL CORP			WATERWORKS DIST NO 22		
(NOW KNOWN AS ATLANTIC RICHFIELD CO)			SUCCESSOR TO PARK WATER CO	160.00	
ROBINSON, B. AND ASSOCIATES			SUCCESSOR TO RYAN AERONAUTICAL CO	20.20	
SUCCESSOR TO JAMES K LAWLER	3.10		SUCCESSOR TO SOUTHERN PACIFIC CO	166.00	
SOLD IN PART TO HARRIS TUBE, INC	-0.70		SUCCESSOR IN PART TO OWEN W CURTIS	3.44	
SOLD IN PART TO SOUTHERN CALIFORNIA	-2.40		SUCCESSOR IN PART TO B ROBINSON AND	2.40	
WATER CO			ASSOCIATES		
TOTAL		0.00	SUCCESSOR TO WESTERN WATER SERVICE	242.60	
ROCKWELL, MICHAEL L			COMPANY		
SUCCESSOR TO BANK OF AMERICA NATIONAL	0.10		NAME CHANGE TO GOLDEN STATE WATER	-7,502.24	
TRUST AND SAVINGS ASSOCIATION (TRUST B			COMPANY		
1-51)			TOTAL		0.00
SOLD TO LITTLE, WILLIAM	-0.10		SOUTHERN PACIFIC CO	166.00	
TOTAL		0.00	SOLD TO SO CALIFORNIA WATER CO	-166.00	
RODRIGUEZ, FLAVIO	6.10		TOTAL		0.00
SOLD TO STATE OF CALIFORNIA	-4.00		SOUTHERN WESTERN PORTLAND CEMENT		
DISCLAIMED WATER RIGHT	-2.10		COMPANY	15.00	
TOTAL		0.00	SOLD TO CHANDLERS PALOS VERDES AND		
ROMAN CATHOLIC ARCHBISHOP OF LOS	72.30	72.30	GRAVEL CORP	-15.00	
ANGELES (HOLY CROSS CEMETERY)			TOTAL		0.0
ROLLING HILLS COUNTRY CLUB			SOUTHWEST STEEL ROLLING MILLS		
SUCCESSOR TO CHANDLERS PALOS VERDES	290.00		SUCCESSOR TO MARTIN BROTHERS BOX CO,	3.40	
SAND AND GRAVEL CORP.			INC		
TOTAL		290.00	SOLD TO COAST FOREST PRODUCTS	-3.40	
RUFFNER CORP			TOTAL		0.00
SUCCESSOR TO LOUIS M SEPULVEDA	0.70		SPANISH AMERICAN INSTITUTE	44.40	
ABANDONED WATER RIGHT	-0.70		SOLD TO FUTURA INDUSTRIES, INC	-44.40	
TOTAL		0.00	TOTAL		0.00
RYAN AERONAUTICAL CO	20.20		SPARKLETTS DRINKING WATER CORP		
SOLD TO SOUTHERN CALIFORNIA WATER CO	-20.20		SUCCESSOR TO ANDERSON, REMBERT C, ET	80.50	
TOTAL		0.00	AL		
SANTA FE LAND IMPROVEMENT CO	39.50		SUCCESSOR TO CALIFORNIA, STATE OF	26.10	
SOLD TO HILLSIDE MEMORIAL PARK	-39.50		SUCCESSOR TO KAHLERT, ET AL	18.90	
TOTAL		0.00	SUCCESSOR TO KURTZ, GLADYS	3.50	
SCANDA, JAMES AND GEORGE NASSIN	1.90		SUCCESSOR TO MCCANDLESS, JAMES	6.70	
SOLD TO DONALD G HUNT	-1.90		SUCCESSOR TO WECHSLER, B A	3.10	
TOTAL		0.00	SUCCESSOR IN PART TO KELLY PIPE CO	13.80	
SCHLAEGEL, KEITH W AND OPAL B	13.60		SOLD TO WESTERN WATER CO	-152.60	
SOLD TO SIDNEY R AND CHARLOTTE W TITLE	-13.60		TOTAL		0.00
TOTAL		0.00	STANDARD OIL CO OF CALIFORNIA		
SCOTT, H S			(NOW KNOWN AS CHEVRON U S A, INC)		
SUCCESSOR TO W F BURKE AND LOIS PRICE	9.50		STAUFFER CHEMICAL CO	521.00	
QUITCLAIMED TO PACIFIC CREST CEMETERY	-9.50		SOLD TO RHONE-POULENC BASIC CHEMICALS	-521.00	
CO			CO		
TOTAL		0.00	TOTAL		0.00
SEABACK, ALFRED D AND RUTH	3.50		SUNRISE GROWERS, INC		
SOLD TO LESLIE R FLESH AND OR	-3.50		SUCCESSOR TO AMERICAN PLANT GROWERS	10.00	
PASTERNAK, ET AL			INC		
TOTAL		0.00	SOLD TO AMERICAN PLANT GROWERS, INC	-10.00	
SEPULVEDA, LOUIS M	0.70		TOTAL		0.00
ACQUIRED BY RUFFNER CORP	-0.70		SUPERIOR OIL CO		
TOTAL		0.00	SUBJECT TO LONG TERM LEASE FROM	26.40	
SHEETS, ESTHER M			ISABELA J GRANZ		
(FORMERLY CLYDE L SHEETS)			SOLD TO MOBIL OIL CORP	-26.40	
(SEE DENNIS, ESTHER M SHEETS)			TOTAL		0.00
SHELL OIL CO	4,516.00		SWICK, PEGGY	5.50	
SUCCESSOR TO LAGERLOF, STANLEY C	3.50		SOLD TO HILARIO AND EMMA ALWAG	-5.50	
SOLD IN PART TO UNION OIL CO OF CAL	-1,974.00		TOTAL		0.00
SOLD IN PART TO UNION OIL CO OF CAL	-1,526.00		TESORO REFINING AND MARKETING COMPANY		
			SUCCESSOR TO SHELL OIL PRODUCTS US		

West Coast Basin Watermaster

(NOW KNOWN AS TESORO REFINING & MARKETING COMPANY LLC)			TOTAL		0.00
<b>TESORO REFINING &amp; MARKETING COMPANY LLC</b>			<b>VERBURG, WILLIAM AND CLARA B</b>	<b>6.70</b>	
(FORMERLY TESORO REFINING AND MARKETING COMPANY)	3,432.00		SOLD TO ABC NURSERY, INC	-6.70	
SUCCESSOR TO ATLANTIC RICHFIELD COMPANY (6-13-2013)	5,309.00	8,741.00	TOTAL		0.00
			<b>VUKELICH MIKE, JR.</b>		
			SUCCESSOR TO AMERICAN PLANT GROWERS, INC.	10.00	<u>10.00</u>
			TOTAL	<b>12.20</b>	
<b>TEXACO, INC</b>			<b>WADA, KAORU AND SATORU</b>		
(NOW KNOWN AS TEXACO REFINING AND MARKETING, INC)			SOLD TO PACIFIC CREST CEMETERY CO	-12.20	
TEXACO REFINING AND MARKETING, INC	<b>3,432.00</b>		TOTAL		0.00
(FORMERLY: TEXACO, INC)			<b>WATKINSON, JOSEPHINE</b>	<b>3.10</b>	
SOLD TO EQUILON ENTERPRISES, LLC	-3,432.00		SOLD TO MATES TUNE, ET AL	-3.10	
TOTAL		0.00	TOTAL		0.00
<b>THAXTER, RALPH AND LOIS A LENOIR</b>	<b>3.50</b>		<b>WATSON LAND CO</b>	<b>42.60</b>	
SOLD TO KENICHI INOSE	-3.50		SUCCESSOR IN PART TO DOMINGUEZ WATER CORP	37.60	
TOTAL		0.00	TOTAL		<u>80.20</u>
THORPE, GREGORY			WATT INDUSTRIAL PROPERTIES		
SUCCESSOR IN PART TO ESTATE OF JOHN GRANT	11.80		SUCCESSOR TO WILLIAM LITTLE	0.10	<u>0.10</u>
SOLD TO DOMINGUEZ WATER CORP	-11.80		WATT, R A, INC		
TOTAL		0.00	SUCCESSOR TO NED EWING, ET AL	6.50	
THORPE, TERENCE			SUCCESSOR IN PART TO ISABELA J GRANZ ESTATE	13.75	
SUCCESSOR IN PART TO ESTATE OF JOHN GRANT	11.80		SUCCESSOR IN PART TO JOUGHIN TORRANCE RANCH	55.35	
SOLD TO HILLSIDE MEMORIAL PARK	-11.80		SOLD TO DOMINGUEZ WATER CORP	-61.85	
TOTAL		0.00	SOLD TO CITY OF TORRANCE	-13.75	
<b>TIDEWATER OIL CO</b>			TOTAL		0.00
(SEE PHILLIPS PETROLEUM CO)			WECHSLER, B A		
TITLE, SIDNEY R AND CHARLOTTE W			SUCCESSOR TO MATES TUNE, ET AL	3.10	
SUCCESSOR TO KEITH W AND OPAL B SCHLAEGE L	13.60		SOLD TO SPARKLETTS DRINKING WATER CORP	-3.10	
SOLD TO ABC NURSERY, INC	-13.60		TOTAL		0.00
TOTAL		0.00	WESTERN WATER CO		
<b>TORRANCE, CITY OF</b>	<b>2,519.00</b>		SUCCESSOR TO FLETCHER OIL AND REFINING CO	90.00	
SUCCESSOR TO BARCLAY HOLLANDER CORP	3.33		SUCCESSOR TO SPARKLETTS DRINKING WATER CORP	152.60	
SUCCESSOR TO BARCLAY, RICHARD AND WATT, R A	59.96		SOLD TO WESTERN WATER SERVICES CO	-242.60	
SUCCESSOR TO BELVIDERE MUTUAL WATER CO	33.40		TOTAL		0.00
SUCCESSOR TO DENNIS, ESTHER M SHEETS	5.50		<b>WESTERN WATER SERVICES CO *</b>		
SUCCESSOR TO ALCAST FOUNDRY ET AL	7.20		SUCCESSOR TO WESTERN WATER CO.	242.60	
SUCCESSOR TO GONZALES, GABRIELA AND MARIA R	34.30		SOLD TO SOUTHERN CALIFORNIA WATER COMPANY	-242.60	
SUCCESSOR TO JONES, ANNA MAE	50.20		TOTAL		<u>0.00</u>
SUCCESSOR TO MONETA WATER CO	916.00		<b>WESTON INVESTMENT CO</b>	<b>184.00</b>	
SUCCESSOR TO MORAN, RONALD E	9.00		SOLD TO TORRANCE SAND AND GRAVEL CORP	-184.00	
SUCCESSOR TO NORMANDIE PARK	136.82		TOTAL		0.00
SUCCESSOR TO TORRANCE UNIFIED SCHOOL DISTRICT	59.40		<b>WISEBURN SCHOOL DISTRICT</b>	<b>8.20</b>	<u>8.20</u>
SUCCESSOR TO UNITED STATES STEEL CORP	1,791.00		<b>WOODMAN, KATHERINE P</b>		
SUCCESSOR TO WATT, R A, INC	13.75		(SEE FRED A JUNGQUIST)		
TOTAL		5,638.86	<b>ZEIGLER, MAXWELL T</b>	<b>0.00</b>	<u>0.00</u>
TORRANCE SAND AND GRAVEL CORP					
SUCCESSOR TO WESTON INVESTMENT CO	184.00		GRAND TOTAL	64,468.25	64,468.25
SOLD TO CHANDLERS PALOS VERDES SAND AND GRAVEL CORP	-184.00				
TOTAL		0.00			
TORRANCE UNIFIED SCHOOL DISTRICT					
SUCCESSOR TO HILARIO S AND EMMA ALWAG	59.40				
SOLD TO CITY OF TORRANCE	-59.40				
TOTAL		0.00			
TOSCO CORP					
SUCCESSOR TO UNION OIL CO OF CALIF	6,170.00				
MERGED INTO CONOCOPHILLIS COMPANY	-6,170.00				
TOTAL		0.00			
TUNE, MATES, ET AL					
SUCCESSOR TO JOSEPHINE WATKINSON	3.10				
SOLD TO B A WECHSLER	-3.10				
TOTAL		0.00			
<b>UNION NURSERY, INC</b>					
SECOND WEST COAST BASIN JUDGMENT	4.70				
SOLD TO CENTURY BUILDERS	-4.70				
TOTAL		0.00			
<b>UNION OIL CO OF CALIFORNIA</b>	<b>2,670.00</b>				
SUCCESSOR IN PART TO SHELL OIL CO	1,974.00				
SUCCESSOR IN PART TO SHELL OIL CO	1,526.00				
SOLD TO TOSCO CORP	-6,170.00				
TOTAL		0.00			
UNITED CALIFORNIA BANK					
SUCCESSOR TO BALLMAN, ROSEMARY N	7.00				
SOLD TO A B C NURSERY, INC	-2.00				
SOLD TO NOZAKI, SUMIKICHI	-5.00				
TOTAL		0.00			
<b>UNITED STATES NAVY DEPARTMENT</b>	<b>1.70</b>				
LONG TERM LEASE TO MCDONNELL DOUGLAS CORP PER JUDGEMENT	-1.70				
TOTAL		0.00			
<b>UNITED STATES STEEL CORP</b>	<b>1,791.00</b>				
SOLD TO TORRANCE, CITY OF	-1,791.00				

**WEST COAST BASIN JUDGMENT-1961**  
**SECOND WEST COAST BASIN JUDGMENT**  
**CURRENT WATER RIGHT HOLDERS**

\* WESTERN WTR. SERV.CO. - PARTY WITH ZERO ADJUDICATED RIGHTS FOR THE DURATION OF LONG TERM LEASE AGREEMENT WITH CHEVRON (ENDED JUNE 30, 2013)

