

# WATERMASTER SERVICE

## IN THE WEST COAST BASIN - LOS ANGELES COUNTY

July 1, 2017 - June 30, 2018

December 2018



## WEST COAST BASIN WATERMASTER

### WEST COAST BASIN WATER RIGHTS PANEL

Prepared by the Administrative Body



This report is available at [www.wrd.org](http://www.wrd.org)

Printed copies are available.

Send requests to:

[watermaster@wrld.org](mailto:watermaster@wrld.org)

# WATERMASTER SERVICE

IN THE WEST COAST BASIN  
LOS ANGELES COUNTY

July 1, 2017 - June 30, 2018

December 2018

**WEST COAST BASIN  
WATER RIGHTS PANEL**



Prepared by the  
Water Replenishment District of Southern California  
West Coast Basin Administrative Body

for the  
West Coast Basin Watermaster Water Rights Panel

Adopted on  
December 4, 2018

# Contents

<b>Summary of Pertinent Data</b>	1
<b>Introduction</b>	2
<b>Water Use</b>	
A. Adjudicated Rights Extractions by Parties	3
B. Groundwater Storage Activity by Parties	3
C. Excess Production	4
D. Extractions of Contaminated Groundwater	4
E. Extractions by Non-Parties	4
F. Adjudicated Rights Transfers	4
G. Exchange Pool	5
H. Status of Extraction Wells	5
I. Meter Testing Program	5
<b>Water Supply</b>	
A. Precipitation	6
B. Groundwater Recharge	6
C. In-Lieu Replenishment	7
D. Imported Water	7
E. Recycled Water	7
F. Total Water Use	7
G. Exported Water	7
H. Increased Extraction in the Central Basin	7
I. Seawater Intrusion Barrier Projects	8
J. Groundwater Levels	8
<b>Watermaster Administrative Costs and Budget</b>	9

## Tables

1	Water Rights Accounting	10
2	Storage Accounting	12
3	Water Put Into Storage	13
4	Water Extracted from Storage	13
5	Storage Transfers	13
6	Four Year Storage Summary	13
7	Overextractions	14
8	Extractions by Non-Parties	14
9	Non-Consumptive Water Use Permits	14
10	Leases	15
11	Change of Ownership	16
12	Exchange Pool	17
13	Extraction Wells Completed	17
14	Extraction Wells Destroyed	17
15	Replenishment Operations	17
16	WRD In-Lieu Recharge	18
17	Imported Water Use	18
18	Recycled Water Use	19
19	Seawater Intrusion Barrier Project Operations	19
20	Apportionment of Budget Among Parties	20

## Figures

1	West Coast Basin (showing groundwater production)	22
2	Monthly Water Production (excludes non-consumptive use)	23
3	West Coast Basin (showing key wells and facilities)	24
4	Monthly Rainfall	25
5	Total Water Use	26
6	Water Level Hydrographs	27

## Appendixes

A	Groundwater Extractions	28
B	Succession of Adjudicated Rights, as of June 2018	38
C	Parties to the Amended Judgment, as of June 2018	45

## West Coast Basin Administrative Body

Water Replenishment District of  
Southern California

### **President**

John D. S. Allen  
*Division 3*

### **Vice-President**

Sergio Calderon  
*Division 4*

### **Secretary**

Vera Robles DeWitt  
*Division 5*

### **Treasurer**

Rob Katherman  
*Division 2*

### **Director**

Willard H. Murray, Jr  
*Division 1*

### **General Manager**

Robb Whitaker

### **Staff**

Ted Johnson

Esther Valle Rojas

Andrew Thomas

Tiffani Fong

Greg Osti

Josi Jenneskens

## West Coast Basin Water Rights Panel

### **Chair**

Katherine Nutting  
*Golden State Water Company*

### **Vice-Chair**

Shawn Igoe  
*City of Manhattan Beach*

### **Treasurer**

Rob Beste  
*City of Torrance*

Ron Sorensen

*California Water Service Company*

Denis Kurt

*Tesoro Refining and Marketing Company*

# Summary of Pertinent Data

Item	Administrative Year 2016 - 2017	Administrative Year 2017 - 2018
Rights Holders	60	59
Active pumpers	21	22
Active nonparties	0	0
Adjudicated Rights (acre-feet)	64,468.25	64,468.25
Rainfall (inches)	18.27	4.02
Injection at barrier projects (acre-feet)	20,842	23,779
Watermaster expenses, total	\$172,896	\$172,896
Watermaster expenses, per Adjudicated Rights	\$2.68	\$2.68
Adjudicated Rights Extractions (acre-feet) <sup>1</sup>	26,805	33,591
Recycled water use by parties (acre-feet)	23,317	24,014
Imported water use by parties (acre-feet)	139,075	147,000
Exported water use by parties (acre-feet)	0	0
<b>Total water use by parties (acre-feet)</b>	<b>189,197</b>	<b>204,605</b>

<sup>1</sup> Excludes extractions by parties with non-consumptive water use permits and by non-parties.

# Introduction

The West Coast Basin (Basin) underlies 160 square miles in the southwestern part of the coastal plain of Los Angeles County. Figure 1 shows the location and adjudicated boundaries of the West Coast Basin. The Basin is bounded on the west by the Santa Monica Bay, on the north by the Ballona Escarpment, on the east by the Newport-Inglewood Uplift, and on the south by the San Pedro Bay and the Palos Verdes Hills. Twenty incorporated cities and several unincorporated areas overlie the Basin. An essential portion of the water needed by the residents and industries in the area overlying the Basin is pumped directly from stored groundwater. In 1945 the intrusion of seawater caused by declining groundwater levels due to over pumping threatened the quality and quantity of the groundwater supply. In response to the seawater intrusion problem legal action was initiated to halt the pumping overdraft and prevent further damage to the Basin. In 1955, the Superior Court of Los Angeles County (Court) appointed the Division of Water Resources as the Watermaster to administer an Interim Agreement. Subsequently, in 1961, the Court retained the Department of Water Resources (DWR) as the Watermaster of the final West Coast Basin Adjudication, or Judgment (Judgment).

On December 5, 2014, the West Coast Basin Judgment was amended (Amended Judgment). The Amended Judgement established a new Watermaster structure, which replaces the DWR. The new Watermaster structure includes three separate constituent bodies; 1) an Administrative Body, 2) a Water Rights Panel, and 3) a Storage Panel. The Administrative Body performs the Watermaster accounting and reporting functions. The Water Replenishment District of Southern California (WRD) was appointed by the court to fulfill this role. The Water Rights Panel enforces issues related to the pumping rights within the adjudications and is composed of five West Coast Basin adjudicated rights holders. The Storage Panel is comprised of the Water Rights Panel and the WRD Board of Directors, which together approve certain groundwater storage efforts.

The Watermaster assists the Court in the administration and enforcement of the provisions of the Amended Judgment. Among other duties, the Watermaster monitors groundwater levels and extractions and reports significant water-related events.

The 2017-2018 Watermaster Report, developed by the Administrative Body and adopted by the Water Rights Panel, summarizes information on groundwater extractions, storage accounts, use of imported water and recycled water, replenishment operations and the budget and finances of Watermaster during the 2017-2018 administrative year (AY).



# Water Use

## A. Adjudicated Extractions by Parties

The Amended Judgment limits the amount of groundwater each Party may extract annually from the Basin. This limit, referred to as the “adjudicated right” is listed in Table 1 for each Party. The Parties are required to report water extractions to the Administrative Body each month (quarterly for small producers). Appendix A lists, by Party, the volume of groundwater extracted each month from each active well in the Basin. Figure 1 describes the variation of groundwater production by three distinct production classifications: less than 500 acre-feet per year (afy), 500 to 2,000 afy, and more than 2,000 afy, during the 2017-2018 AY. In addition, Figure 2 describes monthly water production (excluding non-consumptive use) for the 2017-2018 AY totaling 33,590.95 acre-feet.

To provide flexibility in regards to groundwater extractions, the Amended Judgment contains provisions, such as “Carryover,” which allow each Party to carry over into the succeeding administrative year 100% of their unused adjudicated rights plus the amount of leases with flex, if any. However, the amount of available carryover is reduced by the amount of Stored Water held by the Party. Yet, such reduction will not cause the amount of carryover to be less than 20% of a Party’s total adjudicated rights (including leases with flex). This type of provision is necessary to meet unforeseen water demands.

## B. Groundwater Storage Activity by Parties

The Amended Judgment permits Parties holding water rights to store water in the West Coast Basin for later recovery. Table 2 describes storage accounting, specifically total carryover from the previous 2016-2017 AY, and storage activity for the 2017-2018 AY (transfers, water put into storage, water extracted from storage, and balances). Table 3 lists total quantities of water put into storage by a Party during the 2017-2018 AY, which consists of 1,127 acre-feet. This water was put into storage pursuant to Section V.3.(B) of the Amended Judgment, which allows Parties to convert carryover to storage upon payment of the Replenishment Assessment to WRD. There was no water reported extracted from storage during the 2017-2018 AY (Table 4).

The Amended Judgment also provides for the transfer of stored water between Parties. However, as shown in Table 5, there were no storage transfers in the 2017-2018 AY.

Table 6 provides a storage summary for the current and previous three years, including water put into storage, water extracted from storage, storage balance, and the available adjudicated storage capacity.

### **C. Excess Production**

The Amended Judgment provides for excess production (over extraction) under certain conditions. If a Party does not have stored water, then that Party may over extract in a given year by no more than two acre-feet or 10 percent of their adjudicated right, whichever is greater. Under certain circumstances, a Party may over extract in a greater amount; however, prior approval must be obtained from the Watermaster – Water Rights Panel, or the Court. The over extraction must be reconciled in the following administrative year unless the Court determines this requirement would create an unreasonable hardship for the Party.

During the 2017-2018 AY, four Parties had a combined cumulative over extraction of 159.20 acre-feet. Table 7 lists overextractions by Party. Furthermore, the table lists two Parties, Pacific Crest Cemetery and Mike Vulkelich Jr., in violation of the Amended Judgment.

### **D. Extractions of Contaminated Groundwater**

A Party who is a water rights holder may petition the WRD for a Non-consumptive Water Use Permit (NCWUP) as part of a project to remediate or ameliorate groundwater contamination. If the petition is granted, the Party may extract the groundwater without it counting against its production rights, so long as the conditions of the Amended Judgement are met. A non-Party may extract contaminated groundwater for cleanup purposes by partnering with a Party who obtains the NCWUP and then assigns it to the non-Party. Table 8 lists current NCWUPs and the amounts of groundwater extracted under those permits.

In the 2017-2018 AY there were 326.59 acre-feet of non-consumptive extractions. Appendix A reports these extractions by well and month.

### **E. Extractions by Non-Parties**

Table 9 shows extractions by non-parties (not including NCWUPs) and Appendix A reports these extractions by well and month. In the 2017-2018 Administrative Year there were no extractions by non-parties reported.

### **F. Adjudicated Rights Transfers**

Each year, Adjudicated Rights are transferred between Parties through sales and leases. Appendix B shows the succession of Adjudicated Rights in the West Coast Basin as of June 30, 2018. Permanent water right transfers have reduced the number of Parties from 109 in 1961 to 67 in the 2017-2018 AY. Current parties to the Judgment are listed in Appendix C.

Table 10 shows temporary transfer of Adjudicated Rights through leases, including the Parties involved, transaction type (leases and leases with flex), amount, and recordation date. During the 2017-2018 AY there were seven leases that totaled 4,928.50 acre-feet (all leases were with flex). There were no permanent transfers of Adjudicated Rights (Table 11). Each Party's adjudicated right, as of June 30, 2018, is listed in Table 1.

When land is sold on which a water right has been developed, the Watermaster must receive

a copy of the transfer document if the water right is also transferred. The water right does not automatically pass to the new land owner unless the transfer document specifies that the water right was transferred with the land. For the proper accounting of the water right, the transfer document must specify the exact amount of water right(s) transferred. The Administrative Body maintains a template for a Deed of Water Rights – Permanent Transfer transaction, on its website. There were no changes of ownership of water rights in 2017-2018 AY (Table 11).

In transferring water rights, Parties must specify (1) the type of right (i.e., adjudicated rights, normal carryover, or drought carryover), (2) the amount of right to the nearest 0.01 acre-foot, and (3) the period of the lease, if applicable. Moreover, all leases must be made on an administrative year basis and must be executed by the Parties and received by the Administrative Body no later than the first 45 days after the end of said AY in which the lease is effective.

### **G. Exchange Pool**

The Amended Judgment authorizes an Exchange Pool to provide additional water rights to Parties without sufficient water. If a Party's estimated water requirement for the following fiscal year exceeds its total available water supply, that Party may purchase additional water from the Exchange Pool. There were no requests for Exchange Pool water during the 2017-2018 Administrative Year (Table 12).

### **H. Status of Extraction Wells**

In the 2017-2018 AY, there were 56 reported extraction wells operating in the Basin. The locations of the extraction wells are shown on Figure 1 by three distinct production classifications. There were two new extraction wells reported completed (Table 13) and one extraction well reported destroyed (Table 14) in the 2017-2018 AY.

### **I. Meter Testing Program**

Accurate measurement of groundwater extractions is essential for the successful management of groundwater in the Basin. Therefore, Watermaster requires an operative water meter to be installed at each extraction well. It is the responsibility of each Party to ensure that its meter and test facilities are installed properly and are maintained in good working condition. It is the goal of Watermaster to test the water meter at each active extraction well at least once every two years or when a Party requests a meter calibration. Watermaster tests meters by volumetric or pitot tube comparisons. Watermaster notifies a Party that it must repair or replace its meter when the meter registers beyond five percent accuracy. Watermaster calculates the monthly water production for each well using the meter readings and Unit of Measure Code reported for the well that month. If the registration accuracy of the meter deviates by as much as five percent, the calculated well production could be subject to revision.

The meter testing program is managed by the West Coast Basin Water Rights Panel (WCBWRP). During the 2017-2018 AY, the Department of Water Resources visited 22 Parties and tested meters on 37 wells. Tests showed that 15 meters did not pass, which means the meters were either more than five percent fast or slow. Please contact the WCBWRP at [www.wrd.org/WBWRP](http://www.wrd.org/WBWRP) for specific information regarding meter testing.

# Water Supply

## A. Precipitation

Precipitation over the Basin has relatively minimal direct influence on the replenishment of the groundwater Basin. This is a result of the low soil permeability that characterizes much of the Basin and large impermeable surfaces (i.e. pavement and buildings). However, during years of high rainfall, increased runoff from the areas upstream of the Basin can result in increased replenishment to the Basin and decreased groundwater demand by the water users, which can result in lower rates of groundwater extraction from the Basin.

During the 2017-2018 AY, the following amounts of rainfall were measured at three precipitation stations:

- 3.87 inches at Los Angeles International Airport
- 3.65 inches at Long Beach Airport
- 4.54 inches at Torrance Airport

Figure 3 shows the location of the precipitation stations and other key facilities and Figure 4 shows the monthly average rainfall measured at all three stations. Based on the total rainfall measured at these stations, the mean precipitation over the West Coast Basin was 4.02 inches, which is 32% of the long-term mean of 12.63 inches (Figure 4).

## B. Groundwater Recharge

Replenishment of the West Coast Basin occurs primarily by injection of imported and recycled water into the West Coast and Dominguez Gap Seawater intrusion barriers located along the coast, and underflow from the Central Basin to the east and Santa Monica Basin to the north. As mentioned above, minimal rainfall over the Basin infiltrates into deeper aquifers of the Basin.

Water spread in the Central Basin percolates into the aquifers there and, eventually, some groundwater crosses the Newport-Inglewood Uplift to replenish the groundwater in the West Coast Basin. Although the recharge water is not directly applied to the West Coast Basin, this recharge process returns large quantities of water to the Basin by substantially increasing the natural subsurface flow from the Central Basin to the West Coast Basin. Table 15 shows the sources and quantities of water replenished in the Montebello Forebay area of the Central Basin for the 2016-2017 AY and the 2017-2018 AY. During the 2017-2018 AY, 85,583 acre-feet of water was replenished in the Montebello Forebay.

Water injected in the sea water intrusion barrier projects also contributes significantly to the replenishment of the West Coast Basin (see Section I, Sea Water Intrusion Barrier Projects).

### **C. In-Lieu Replenishment**

During the 1965-1966 water year, WRD, in cooperation with the Metropolitan Water District of Southern California (MWD), began an in-lieu replenishment program where discounted imported water was offered seasonally due to availability. WRD contracted with producers having access to supplemental imported water that could be used in lieu of extracting groundwater from the Basin to reduce overall pumping impacts. However, due to water shortages and other reasons, MWD discontinued their discounted seasonal imported water in 2011. As a result, WRD has suspended its in-lieu replenishment program except under special circumstances.

In the 2017-2018 AY, WRD did not offer the in-lieu replenishment program to West Coast Basin water rights holders (Table 16).

### **D. Imported Water**

Imported water had been the largest component of supply for the West Coast Basin since the mid-1950s. Water is imported from northern California via the State Water Project and from the Colorado River and is made available to water users by MWD through its member agencies: City of Long Beach, West Coast Basin Municipal Water District, City of Torrance, and the City of Los Angeles. Table 17 lists imported water for direct use by sources of water, Party, and quantity (WRD replenishment water is not included in the table). During the 2017-2018 AY, four Parties and one non-Party (California-American Water Company) imported a total of 147,000 acre-feet of water.

### **E. Recycled Water**

Table 18 shows that 24,014 acre-feet of recycled water was used in the area overlying the Basin during the 2017-2018 AY. This amount does not include the recycled water used to replenish groundwater in the Basin.

### **F. Total Water Use**

Figure 5 shows the total water use in the Basin during the 2017-2018 AY, including extracted groundwater, imported water and recycled water for direct use.

### **G. Exported Water**

No groundwater was exported from the Basin. California Water Service Company exported purchased imported water from the Basin to portions of its service area in the Palos Verdes Hills.

### **H. Increased Extraction in the Central Basin for Certain Purveyors Serving Overlying Communities**

Per Section IV.K of the Central Basin Third Amended Judgment, "certain purveyors" are Parties to both the Central Basin Third Amended Judgment and West Coast Basin Judgement and serve

communities overlying both the Central and West Coast Basin. These purveyors, include the City of Los Angeles, Golden State Water Company, and California Water Service Company and are allowed to increase their extraction in the Central Basin beyond their Allowed Pumping Allocation, which is the amount of groundwater each Party may extract annually. However, the increased extraction is counted against their Adjudicated Right in the West Coast Basin. Increased extractions are limited to 5,000 af per AY per party.

In the 2017-2018 AY, Golden State Water Company increased their extraction in the Central Basin by 2,100 af, which is reflected in Table 1.

### **I. Seawater Intrusion Barrier Projects**

The LACDPW operates two barrier projects, the West Coast Basin Barrier and the Dominguez Gap Barrier, within the West Coast Basin. Table 19 shows the quantities of imported and recycled water injected into the two barrier projects. The barriers are designed to prevent seawater intrusion into the fresh water aquifers of the Basin. In the 2017-2018 AY, 23,779 acre-feet of water were injected into these two barrier systems. The location of the two barriers systems are illustrated in Figure 3.

### **J. Groundwater Levels**

Figure 6 shows the location and water level elevations in the key wells located in the West Coast Basin. WRD's annual Engineering Survey and Report and Regional Groundwater Monitoring Report give more detailed information regarding water levels in the Basin.

# Watermaster Administrative Costs and Budget

To fund Watermaster activities, both the Administrative Body and the Water Rights Panel have annual assessments that are levied on water rights holders under the terms of the Judgment. The Administrative Body charges a flat fee of twenty dollars (\$20) to each rights holder. The remaining amount of the Administrative Body budget is charged to rights holders based upon their proportional ownership of total adjudicated rights. The Water Rights Panel assessment is charged to all water rights holder. For the 2017-2018 AY, the Water Rights Panel rate was one dollar (\$1.00) per acre-foot of adjudicated right.

The total Watermaster budget for 2017-2018 was \$172,896.15. This amount is composed of the Water Rights Panel budget of \$64,468.25 and the Administrative Body budget of \$108,427.90. A summary of the 2017-2018 budget is provided in Table 19.

Table 1 - Water Rights Accounting (acre-feet)

Party	AR 2017-2018 <sup>1</sup>	Net Carryover <sup>2</sup> from 2016-2017	Leases <sup>3</sup>		Storage <sup>4</sup>	Allowable <sup>5</sup> Extraction	Amount Pumped	Balance <sup>6</sup>	Allowable carryover into 2018-2019		
			with Flex	w/o Flex					Drought <sup>7</sup>	Normal	Total
ABC Nursery, Inc.	24.10	9.02	0.00	0.00	0.00	33.12	18.00	15.12	0.00	15.12	15.12
Andeavor Logistics (Tesoro Refining & Marketing Co.)	8,741.00	9,760.50	1,019.50	0.00	0.00	19,521.00	5,580.50	13,940.50	0.00	9,760.50	9,760.50
Asahi Fancy Koi, Inc	2.00	34.20	0.00	0.00	0.00	36.20	0.00	36.20	32.20	2.00	34.20
Automation Industries, Inc	0.70	4.10	0.00	0.00	0.00	4.80	0.00	4.80	3.40	0.70	4.10
CBS, Inc.	9.50	9.50	0.00	0.00	0.00	19.00	0.00	19.00	0.00	9.50	9.50
California Water Service Co./Hawthorne Lease	0.00	1,262.34	1,882.00	0.00	0.00	3,144.34	1,555.36	1,588.98	0.00	1,588.98	1,588.98
California Water Service Company	4,070.00	4,070.00	0.00	-120.00	0.00	8,020.00	1,086.30	6,933.70	0.00	4,070.00	4,070.00
California Water Service Company (Dominguez)	10,417.45	10,417.45	0.00	0.00	0.00	20,834.90	4,059.75	16,775.15	0.00	10,417.45	10,417.45
Carson-Harbor Village Mobile Home Park	7.00	7.00	0.00	0.00	0.00	14.00	0.00	14.00	0.00	7.00	7.00
Carson-Madrone Company	104.00	104.00	0.00	0.00	0.00	208.00	0.00	208.00	0.00	104.00	104.00
Century Builders	4.70	4.70	0.00	0.00	0.00	9.40	0.00	9.40	0.00	4.70	4.70
Chandler Palos Verdes Sand & Gravel Company	4.20	4.20	0.00	0.00	0.00	8.40	0.00	8.40	0.00	4.20	4.20
Chevron USA Inc.	4,601.30	3,651.30	-950.00	0.00	0.00	7,302.60	0.00	7,302.60	0.00	3,651.30	3,651.30
Coastline Church of Christ	0.70	4.10	0.00	0.00	0.00	4.80	0.00	4.80	3.40	0.70	4.10
ConocoPhillips Company (Phillips '66)	6,170.00	5,584.23	0.00	0.00	0.00	11,754.23	5,583.54	6,170.69	787.78	5,382.91	6,170.69
Curtis, Owen W	0.36	3.08	0.00	0.00	0.00	3.44	0.00	3.44	2.72	0.36	3.08
Delaney, Golda Estate of	4.10	14.30	0.00	0.00	0.00	18.40	0.00	18.40	10.20	4.10	14.30
Eco Services Operations, LLC	521.00	233.92	0.00	0.00	0.00	754.92	509.54	245.38	0.00	245.38	245.38
EI Segundo City of	953.00	953.00	0.00	0.00	0.00	1,906.00	0.00	1,906.00	0.00	953.00	953.00
Engelsma, Susan Trust	12.10	12.10	0.00	0.00	0.00	24.20	0.00	24.20	0.00	12.10	12.10
Evergreen America Corporation	5.40	5.40	0.00	0.00	0.00	10.80	0.00	10.80	0.00	5.40	5.40
Fujimoto, SR. & St & JK	20.00	32.28	0.00	0.00	0.00	52.28	0.00	52.28	12.28	20.00	32.28
Gillingham, Florence R, et al	2.40	2.40	0.00	0.00	0.00	4.80	0.00	4.80	0.00	2.40	2.40
Golden State Water Company <sup>8</sup>	7,502.24	3,537.36	500.00	0.00	3,300.00	14,839.60	7,027.74	7,811.86	3.39	2,408.47	2,411.86
Hawthorne, City of	1,882.00	0.00	-1,882.00	0.00	0.00	0.00	0.00	0.00	0.00	0.00	0.00
Hillside Memorial Park	104.10	-16.37	0.00	0.00	0.00	87.73	97.87	-10.14	0.00	-10.14	-10.14
Hollywood Park Land Company, LLC	282.00	282.00	-282.00	0.00	0.00	282.00	0.00	282.00	0.00	0.00	0.00
Honeywell International, Inc.	22.50	22.50	0.00	0.00	0.00	45.00	0.00	45.00	0.00	22.50	22.50
Honold, Kristin Brandsma	11.80	11.80	0.00	0.00	0.00	23.60	0.00	23.60	0.00	11.80	11.80
Inglewood, City of	4,449.89	4,449.89	187.00	0.00	0.00	9,086.78	2,073.10	7,013.68	0.00	4,636.89	4,636.89
Kinder Morgan Liquids Terminals LLC	167.00	167.00	0.00	0.00	0.00	334.00	31.82	302.18	0.00	167.00	167.00
Leuzinger, Emma L Estate of	1.40	5.90	0.00	0.00	0.00	7.30	0.00	7.30	4.50	1.40	5.90
Lomita, City of	1,352.00	1,102.00	-700.00	0.00	0.00	1,754.00	619.59	1,134.41	0.00	652.00	652.00
Long Beach, City of	0.70	0.70	0.00	0.00	0.00	1.40	0.00	1.40	0.00	0.70	0.70
Lopes, Frank	3.70	13.10	0.00	0.00	0.00	16.80	0.00	16.80	9.40	3.70	13.10
Los Angeles County Department of Parks & Recreation	363.70	10.92	95.00	0.00	0.00	469.62	497.29	-27.67	0.00	-27.67	-27.67



Table 1 - Water Rights Accounting Continued

Party	AR 2017-2018 <sup>1</sup>	Net Carryover <sup>2</sup> from 2016-2017	Leases <sup>3</sup>		Storage <sup>4</sup>	Allowable <sup>5</sup> Extraction	Amount Pumped	Balance <sup>6</sup>	Allowable carryover into 2018-2019		
			with Flex	w/o Flex					Drought <sup>7</sup>	Normal	Total
Los Angeles County Sanitation Districts-JWPCP	102.00	102.00	0.00	0.00	0.00	204.00	0.00	204.00	0.00	102.00	102.00
Los Angeles, City of Dept of Water and Power	1,503.00	1,503.00	0.00	0.00	0.00	3,006.00	0.00	3,006.00	0.00	1,503.00	1,503.00
Loyola Marymount University	48.10	48.10	0.00	0.00	0.00	96.20	0.00	96.20	0.00	48.10	48.10
Manhattan Beach, City of	1,131.20	2,081.20	950.00	0.00	0.00	4,162.40	366.17	3,796.23	0.00	2,081.20	2,081.20
McDonnell Douglas Corp.	1.70	1.70	0.00	0.00	0.00	3.40	0.00	3.40	0.00	1.70	1.70
Montrose Chemical Corporation of California <sup>9</sup>	1.20	1.20	0.00	0.00	0.00	2.40	0.00	2.40	0.00	1.20	1.20
Mori, Roy H and Kenji	3.60	12.80	0.00	0.00	0.00	16.40	0.00	16.40	9.20	3.60	12.80
Northrop Corporation	38.15	38.15	0.00	0.00	0.00	76.30	0.00	76.30	0.00	38.15	38.15
Nozaki, Sumikichi	7.00	7.00	0.00	0.00	0.00	14.00	0.00	14.00	0.00	7.00	7.00
Ocean Industries, Inc.	0.10	1.10	0.00	0.00	0.00	1.20	0.00	1.20	0.00	0.10	0.10
Pacific Crest Cemetery Company	39.40	-141.60	0.00	120.00	0.00	17.80	100.31	-82.51	0.00	-82.51	-82.51
Palos Verdes Begonia Farm	0.00	7.40	0.00	0.00	0.00	7.40	0.00	7.40	7.40	0.00	7.40
Rehor, Josephine P	2.20	2.20	0.00	0.00	0.00	4.40	0.00	4.40	0.00	2.20	2.20
Rolling Hills Country Club	290.00	265.00	0.00	0.00	0.00	555.00	278.00	277.00	0.00	277.00	277.00
Roman Catholic Archbishop of Los Angeles	72.30	116.26	200.00	0.00	0.00	388.56	302.28	86.28	0.00	86.28	86.28
Shell Oil Company	1,019.50	0.08	-1,019.50	0.00	0.00	0.08	0.00	0.08	0.00	0.08	0.08
Southern California Edison Co.	57.10	63.32	0.00	0.00	0.00	120.42	27.88	92.54	6.22	57.10	63.32
Torrance Refining Company	2,596.40	2,626.83	0.00	0.00	0.00	5,223.23	955.27	4,267.96	30.43	2,596.40	2,626.83
Torrance, City of <sup>10</sup>	5,638.86	0.07	0.00	0.00	6,766.40	12,405.33	2,773.37	9,631.96	0.00	1,127.77	1,127.77
Vukelich, Mike Jr.	10.00	-2.21	0.00	0.00	0.00	7.79	47.27	-39.48	0.00	-39.48	-39.48
Watson Land Company	80.20	80.20	0.00	0.00	0.00	160.40	0.00	160.40	0.00	80.20	80.20
Wiseburn School District	8.20	8.20	0.00	0.00	0.00	16.40	0.00	16.40	0.00	8.20	8.20
<b>TOTAL:</b>	<b>64,468.25</b>	<b>52,591.92</b>	<b>0.00</b>	<b>0.00</b>	<b>10,066.40</b>	<b>127,126.57</b>	<b>33,590.95</b>	<b>93,535.62</b>	<b>922.52</b>	<b>52,027.74</b>	<b>52,950.26</b>

1 AR - Adjudicated Rights.

2 Net Carryover is the sum of all carryover from the previous year less the amount of carryover conversion for the current year.

3 See Table 9 for information concerning leases. Lease with flex includes carryover provisions.

4 Storage includes Carryover Conversion for Administrative Year 2017-18.

5 Allowable Extraction = Adjudicated Rights + Net Carryover + Leases + Storage.

6 Balance = Allowable Extraction - Amount Pumped.

7 Drought - drought carryover created in 1991.

8 Includes 2,100.00 acre-feet of increased extraction accounted for in Allowable Extraction (pursuant to Section IV(K) of the Central Basin Judgment).

9 61.05 a.f. of exempt production were pumped under a non-consumptive use permit.

10 2016-17 net carryover reduced by 1,127.70 a.f. of carryover conversion.

Table 2 - Storage Accounting

Party	Carryover from 2016-2017		2017-2018 Storage Activity									
	ISA <sup>1</sup>	CSP <sup>2</sup>	Transfers		Water put into Storage		Water Extracted From Storage		Balance		Total	
			ISA	CSP	ISA	CSP	ISA	CSP	ISA	CSP		
Torrance, City of	2,255.54	3,383.16	-	-	-	1,127.70	-	-	2,255.54	4,510.86	6,766.40	
Golden State Water Company	3,000.90	299.10	-	-	-	-	-	-	3,000.90	299.10	3,300.00	
<b>West Coast Basin Total</b>	<b>5,256.44</b>	<b>3,682.26</b>	<b>0.00</b>	<b>0.00</b>	<b>0.00</b>	<b>1,127.70</b>	<b>0.00</b>	<b>0.00</b>	<b>5,256.44</b>	<b>4,809.96</b>	<b>10,066.40</b>	

<sup>1</sup> Individual Storage Account.

<sup>2</sup> Community Storage Pool.

Table 3 - Water Put Into Storage

Party	Quantity	Storage Account <sup>1</sup>	Storage Method <sup>2</sup>	Date
Torrance, City of	1,127.00	CSP	CC	8/10/18
<b>Total:</b>	<b>1,127.00</b>			

Table 4 - Water Extracted From Storage

Party	Quantity	Storage Account	Date
No stored water was extracted in 2017 - 2018			

Table 5 - Storage Transfers

Party	Quantity	Storage Account	Date
No stored water was transferred in 2017 - 2018			

Table 6 - Four Year Storage Summary

Year	Water Put Into Storage			Water Extracted From Storage			Storage Balance			Available Adjudicated Storage Capacity		
	ISA	CSP	Total	ISA	CSP	Total	ISA	CSP	Total	ISA	CSP	Total
2014	1,097.77	0.00	1,097.77	0.00	0.00	0.00	1,097.77	0.00	1,097.77	24,702.23	35,500.00	60,202.23
2015	1,157.77	1,917.16	3,074.93	0.00	0.00	0.00	4,172.70	1,917.16	6,089.86	23,544.46	33,582.84	57,127.30
2016	3,000.90	1,765.10	4,766.00	0.00	0.00	0.00	5,256.44	3,682.26	8,938.70	20,543.56	31,817.74	52,361.30
2017	0.00	1,127.00	1,127.00	0.00	0.00	0.00	5,256.44	4,809.96	10,066.40	20,543.56	30,690.04	51,233.60

<sup>1</sup> CSP = Community Storage Pool. ISA = Individual Storage Account.

<sup>2</sup> CC = Carryover Conversion.

Table 7 - Overextractions

Party	Adjudicated Rights	Allowable Extraction	Amount Pumped	Overextraction <sup>1</sup>	Allowable Overextraction <sup>2</sup>
Hillside Memorial Park	104.10	87.73	97.87	10.14	10.41
LA Co. Dept. of Parks & Rec.	363.70	469.62	497.29	27.67	46.96
Pacific Crest Cemetery	39.40	17.80	100.31	82.51 <sup>3</sup>	3.94
Vulkelich, Mike Jr.	10.00	7.79	47.27	39.48 <sup>3</sup>	2.00
<b>Total:</b>	<b>517.20</b>	<b>582.94</b>	<b>742.74</b>	<b>159.20</b>	<b>63.31</b>

Table 8 - Non-Consumptive Water Use Permits

Party	Issued	Expires	2017-2018 Extraction (acre-feet)
Montrose Chemical Corporation	November 7, 2012	October 31, 2063	61.05
Brewer Desalter	July 22, 1992	June 30, 2017	89.98
Shell Oil <sup>4</sup>	December 28, 2011		175.56
<b>Total</b>			<b>326.59</b>

Table 9. Extractions by Non-Parties

Non-party	Amount Pumped (acre-feet)
There were no extractions by non-parties in 2017-18	
<b>Total</b>	<b>0.00</b>

<sup>1</sup> Overextraction = Amount Pumped - Allowable Extraction.

<sup>2</sup> Judgment allows overextractions computed as 2 acre-feet or 10 percent of Adjudicated Rights, whichever is greater.

<sup>3</sup> Violation of Judgment.

<sup>4</sup> Permit in process of renewal.

Table 10 - Leases (acre-feet)

Party	Transaction Type	Amount	Recordation Date	Party	Net Amount
California Water Service Co./Hawthorne Lease	Lease with flex <sup>1</sup>	1,882.00	2/1/13	Hawthorne, City of	1,882.00
Chevron USA Inc.	Lease with flex	950.00	10/15/15	Manhattan Beach, City of	-950.00
California Water Service Company	Lease <sup>2</sup>	120.00	8/18/17	Pacific Crest Cemetery Company	-120.00
Golden State Water Company	Lease with flex	500.00	7/3/18	Lomita, City of	500.00
Hawthorne, City of	Lease with flex	1,882.00	2/1/13	California Water Service Co./Hawthorne Lease	-1,882.00
Hollywood Park Land Company, LLC	Lease with flex	282.00	3/30/17	Inglewood, City of	-282.00
Inglewood, City of	Lease with flex	282.00	3/30/17	Hollywood Park Land Company, LLC	187.00
Inglewood, City of	Lease with flex	95.00	6/14/18	Los Angeles County Department of Parks & Rec.	
Lomita, City of	Lease with flex	200.00	4/19/18	Roman Catholic Archbishop of Los Angeles	-700.00
Lomita, City of	Lease with flex	500.00	7/3/18	Golden State Water Company	
Los Angeles County Department of Parks & Rec.	Lease with flex	95.00	6/14/18	Inglewood, City of	95.00
Manhattan Beach, City of	Lease with flex	950.00	10/15/15	Chevron USA Inc.	950.00
Pacific Crest Cemetery Company	Lease	120.00	8/18/17	California Water Service Company	120.00
Roman Catholic Archbishop of Los Angeles	Lease with flex	200.00	4/19/18	Lomita, City of	200.00
Shell Oil Company	Lease with flex	1,019.50	10/17/17	Tesoro Refining & Marketing Company	-1,019.50
Tesoro Refining & Marketing Company	Lease with flex	1,019.50	10/17/17	Shell Oil Company	1,019.50
<b>Total Leased Volume</b>		<b>5,048.50</b>			

<sup>1</sup> Leases with flexibility or "flex" transfers both the pumping right and associated carryover rights to the lessee, meaning if the party who leases in the rights "with flex" is allowed to carryover into the next AY any unused rights from the lease under the terms of the judgment.

<sup>2</sup> Lease "without flex" means that the party who obtained the lease cannot carryover any unused lease rights.

Table 11 - Change of Ownership (acre-feet)

Party	Transaction Type	Amount	Recordation Date	Party	Net Amount
There were no sales in the West Coast Basin in 2017-18					
<b>Total Change of Ownership</b>					<b>0.00</b>

Table 12 - Exchange Pool

Party	Adjudicated Rights	Required Offer	Actual Offer	Amount Sold	Payment due Exchanger
There were no requests for the Exchange Pool					

Table 13 - Extraction Wells Completed

Party	Recordation No.	State Well No.	Owner Designation
Water Replenishment District <sup>1</sup>	1930099	4S/14W-04R01S	Delthorne Park
Water Replenishment District	1930100	4S/14W-04R02S	City Yard

Table 14 - Extraction Wells Destroyed

Party	Recordation No.	State Well No.	Owner Designation
Golden State Water Company	1909952	3S/14W-02Q01S	TRURO4

Table 15 - Replenishment Operations

Water spread in the Montebello Forebay area of the Central Basin provides subsurface recharge to the West Coast Basin.

Source of Water	Quantity (acre-feet)	
	2016-2017	2017-2018
Local Runoff	56,929	18,097
<b>Recycled water:</b>		
Whittier Narrows Water Reclamation Plant	7,100	6,348
San Jose Water Reclamation Plant	49,843	46,934
Pomona Water Reclamation Plant	2,932	4,412
MWD untreated Tier 1 water purchased by WRD	32,689	9,792
Make-up water from Upper San Gabriel Basin	0	0
<b>Total</b>	<b>149,493</b>	<b>85,583</b>

<sup>1</sup> WRD is an intervenor in the West Basin Judgment

Table 16 - Water Replenishment District In-Lieu Recharge

Party	In-Lieu Amount (acre-feet)
There was no in-lieu recharge in FY 2017-18	
<b>Total</b>	<b>0.00</b>

Table 17 - Imported Water Use

Source of Water	Party/Entity	Quantity (acre-feet)	
		2016-2017	2017-2018
Colorado River and State Water Project	Long Beach, City of	19,324 <sup>2</sup>	20,961 <sup>2</sup>
Colorado River and State Water Project	<b>West Coast Basin Municipal Water District:</b>		
	California American Water Company	428	1,397
	California Water Service Company <sup>1</sup>	9,280	9,951
	California Water Service Company (Dominguez)	23,049	23,447
	California Water Service Company (Hawthorne Lease)	2,678	2,272
	El Segundo, City of	6,901	7,146
	Golden State Water Company	18,920	21,441
	Inglewood, City of	6,293	7,216
	Lomita, City of	1,549	1,416
	Manhattan Beach, City of	4,317	4,520
	<b>West Basin MWD Subtotal</b>	<b>73,415</b>	<b>78,807</b>
Colorado River and State Water Project	Torrance, City of	16,380	15,474
Owens River-Mono Basin, Colorado River, and State Water Project	Los Angeles, City of	27,605	30,080
Central Basin Groundwater	California-American Water Company	2,351	1,678
<b>Total Imported Water</b>		<b>139,075</b>	<b>147,000</b>

<sup>1</sup> Excludes 16,515.40 acre-feet of imported water that was exported to Palos Verdes.

<sup>2</sup> This value is the same as the imported water use in the Central Basin.



Table 18 - Recycled Water Use

Source of Water	Party/Entity	Quantity (acre-feet)	
		2016-2017	2017-2018
<b>West Basin Municipal Water District:</b>	California Water Service Company	148	219
	California Water Service Company (Hawthorne Lease)	94	113
	California Water Service Company (Dominguez)	6,169	5,396
	El Segundo, City of	9,581	9,189
	Golden State Water Company	364	389
	Inglewood, City of	834	901
	Los Angeles, City of	825	855
	Manhattan Beach, City of	265	268
	Torrance, City of	5,037	6,685
<b>Total Recycled Water</b>		<b>23,317</b>	<b>24,014</b>

Table 19 - Seawater Intrusion Barrier Project Operations

Provisional data provided by the Los Angeles County Department of Public Works.

Barrier Project	Quantity (acre-feet)	
	2016-2017	2017-2018
West Coast Basin Barrier		
Imported water injection	3,861	2,962
Recycled water injection	13,006	13,048
Dominguez Gap Barrier		
Imported water injection	2,574	4,875
Recycled water injection	1,401	2,894
<b>Total</b>	<b>20,842</b>	<b>23,779</b>

Table 20 - Apportionment of Budget Among Rights Holders (2017-2018)

Party	Adjudicated Rights	Water Rights Panel	Administrative Body	Total Amount Billed
A B C Nursery Inc.	24.10	\$24.10	\$60.11	\$84.21
Honeywell International Inc.	22.50	\$22.50	\$57.35	\$79.85
Asahi Fancy Koi Inc.	2.00	\$2.00	\$23.33	\$25.33
Automation Industries Inc.	0.70	\$0.70	\$21.17	\$21.87
CBS Inc.	9.50	\$9.50	\$35.81	\$45.31
California Water Service Company - Hermosa / Redondo	4,070.00	\$4,070.00	\$6,794.55	\$10,864.55
California Water Service Company - Dominquez	10,417.45	\$10,417.45	\$17,359.94	\$27,777.39
Carson Harbor Village Mobile Home Park	7.00	\$7.00	\$31.65	\$38.65
Carson-Madrona Company #3 Del Amo	104.00	\$104.00	\$193.11	\$297.11
Century Builders	4.70	\$4.70	\$27.82	\$32.52
Chandler Palos Verdes Sand & Gravel Company	4.20	\$4.20	\$26.99	\$31.19
Chevron U.S.A. Inc.	4,601.30	\$4,601.30	\$7,678.91	\$12,280.21
Coastline Church of Christ	0.70	\$0.70	\$21.17	\$21.87
Phillips 66 Company	6,170.00	\$6,170.00	\$10,290.02	\$16,460.02
Curtis, Owen	0.36	\$0.36	\$20.60	\$20.96
Estate of Golda Delaney	4.10	\$4.10	\$26.82	\$30.92
El Segundo, City of	953.00	\$953.00	\$1,606.28	\$2,559.28
Susan Engelsma Trust	12.10	\$12.10	\$40.14	\$52.24
Evergreen America Corporation	5.40	\$5.40	\$28.99	\$34.39
Fujimoto, S R & S T & J K	20.00	\$20.00	\$53.29	\$73.29
Gillingham, Florence R, et al	2.40	\$2.40	\$23.99	\$26.39
Golden State Water Company	7,502.24	\$7,502.24	\$12,507.55	\$20,009.79
Hawthorne, City of ( California Water Service Co.)	1,882.00	\$1,882.00	\$3,152.61	\$5,034.61
Hillside Memorial Park	104.10	\$104.10	\$193.28	\$297.38
Hollywood Park Land Company, LLC	282.00	\$282.00	\$489.39	\$771.39
Honold, Kristin Brandsma	11.80	\$11.80	\$39.64	\$51.44
Inglewood, City of	4,449.89	\$4,449.89	\$7,426.88	\$11,876.77
Kinder Morgan Liquids Terminals, LLC	167.00	\$167.00	\$297.97	\$464.97
Estate of Emma L. Leuzinger	1.40	\$1.40	\$22.33	\$23.73
Long Beach, City of	0.70	\$0.70	\$21.17	\$21.87
Frank Lopes	3.70	\$3.70	\$26.16	\$29.86
Los Angeles Department of Water and Power, City of	1,503.00	\$1,503.00	\$2,521.76	\$4,024.76
Los Angeles County Recreation Facilities	363.70	\$363.70	\$625.38	\$989.08
Los Angeles County Sanitation District No. 2	102.00	\$102.00	\$189.78	\$291.78
Lomita Water System, City of	1,352.00	\$1,352.00	\$2,270.42	\$3,622.42

Table 20 - Apportionment of Budget Among Rights Holders (Continued)

Party	Adjudicated Rights	Water Rights Panel	Administrative Body	Total Amount Billed
Loyola Marymount University	48.10	\$48.10	\$100.06	\$148.16
Manhattan Beach, City of	1,131.20	\$1,131.20	\$1,902.89	\$3,034.09
McDonnell Douglas Corporation	1.70	\$1.70	\$22.83	\$24.53
Torrance Refining Company	2,596.40	\$2,596.40	\$4,341.73	\$6,938.13
Montrose Chemical Corporation of California	1.20	\$1.20	\$22.00	\$23.20
Roy H. and Kenji Mori	3.60	\$3.60	\$25.99	\$29.59
Northrop Corporation	38.15	\$38.15	\$83.50	\$121.65
Nozaki, Sumikichi	7.00	\$7.00	\$31.65	\$38.65
Pacific Crest Cemetery Company	39.40	\$39.40	\$85.58	\$124.98
Josephine P. Rehor	2.20	\$2.20	\$23.66	\$25.86
Eco Services Operations LLC	521.00	\$521.00	\$887.21	\$1,408.21
Rolling Hills Country Club	290.00	\$290.00	\$502.71	\$792.71
Roman Catholic Archbishop of Los Angeles	72.30	\$72.30	\$140.34	\$212.64
Shell Oil Company	1,019.50	\$1,019.50	\$1,716.97	\$2,736.47
Southern California Edison Company	57.10	\$57.10	\$115.04	\$172.14
Tesoro Refining & Marketing Company LLC	8,741.00	\$8,741.00	\$14,569.48	\$23,310.48
Torrance, City of	5,638.86	\$5,638.86	\$9,405.93	\$15,044.79
Vukelich, Mike, Jr.	10.00	\$10.00	\$36.65	\$46.65
Watson Land Company	80.20	\$80.20	\$153.49	\$233.69
Watt Industrial Properties	0.10	\$0.10	\$20.17	\$20.27
Wiseburn School District	8.20	\$8.20	\$33.65	\$41.85
<b>Total</b>	<b>64,468.25</b>	<b>\$64,468.25</b>	<b>\$108,427.90</b>	<b>\$172,896.15</b>

Figure 1 - West Coast Basin  
(showing groundwater production)

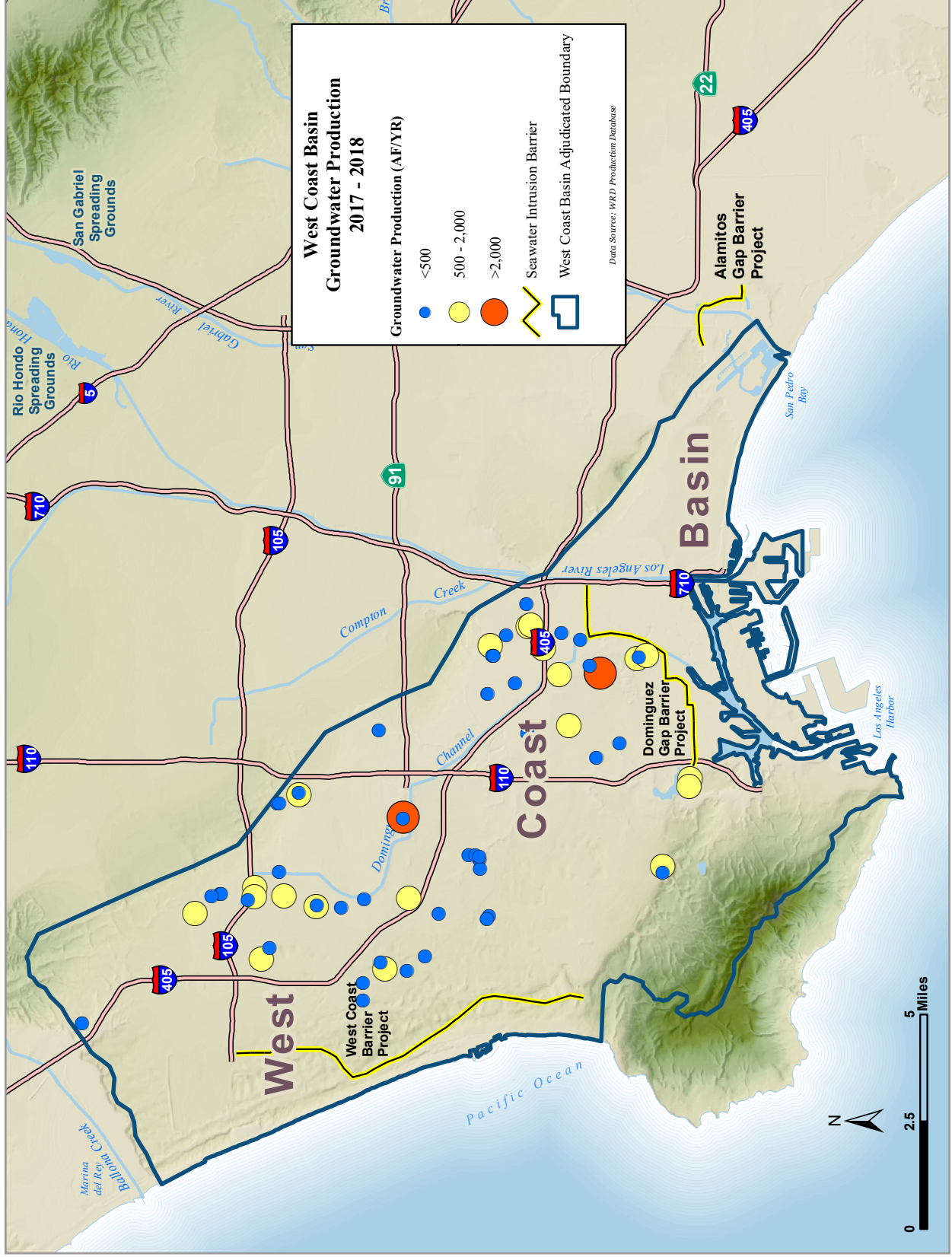


Figure 2 - Monthly Water Production  
(excludes non-consumptive use)

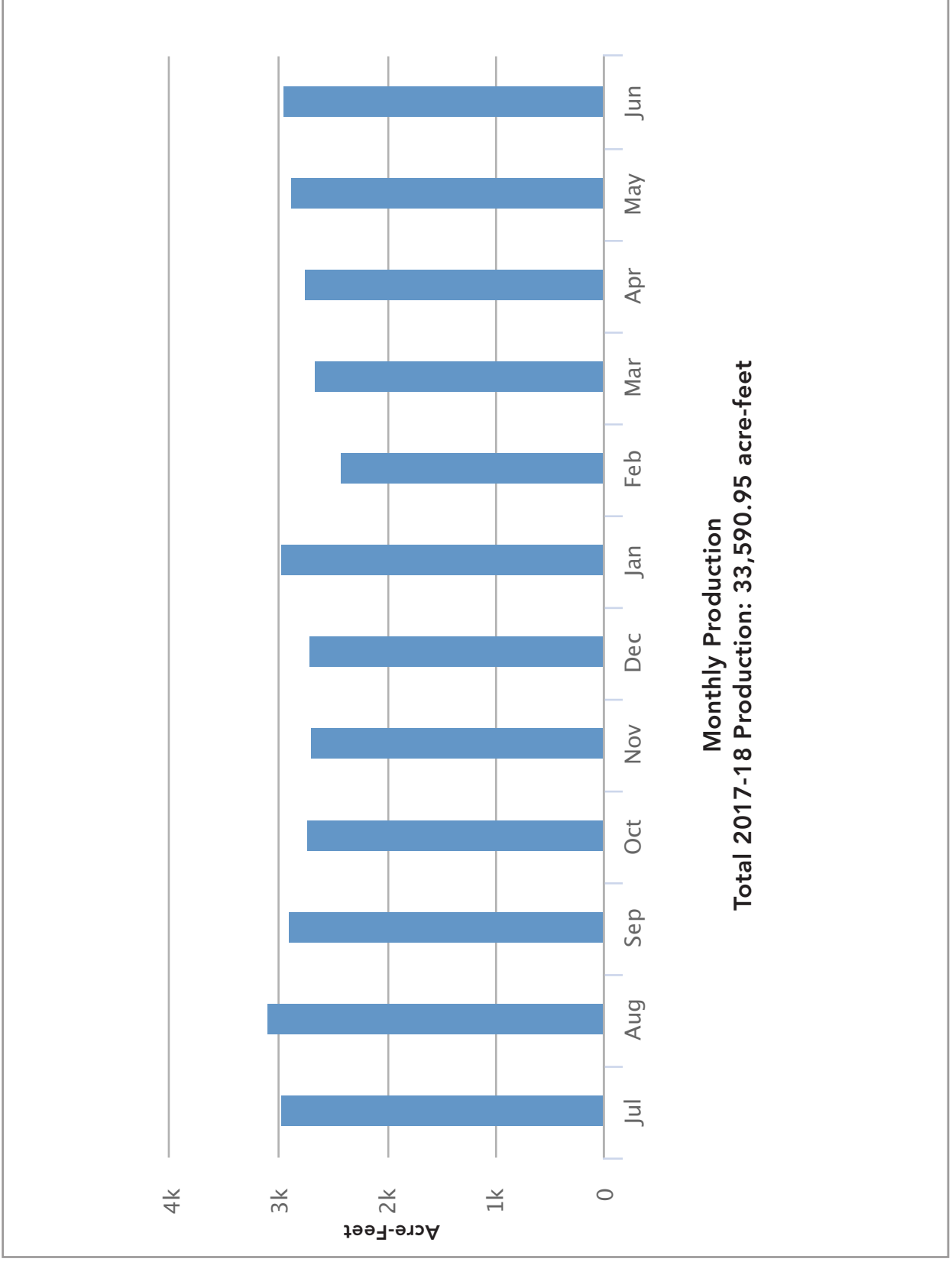




Figure 3 - West Coast Basin (showing key wells and facilities)



Figure 4 - Monthly Rainfall

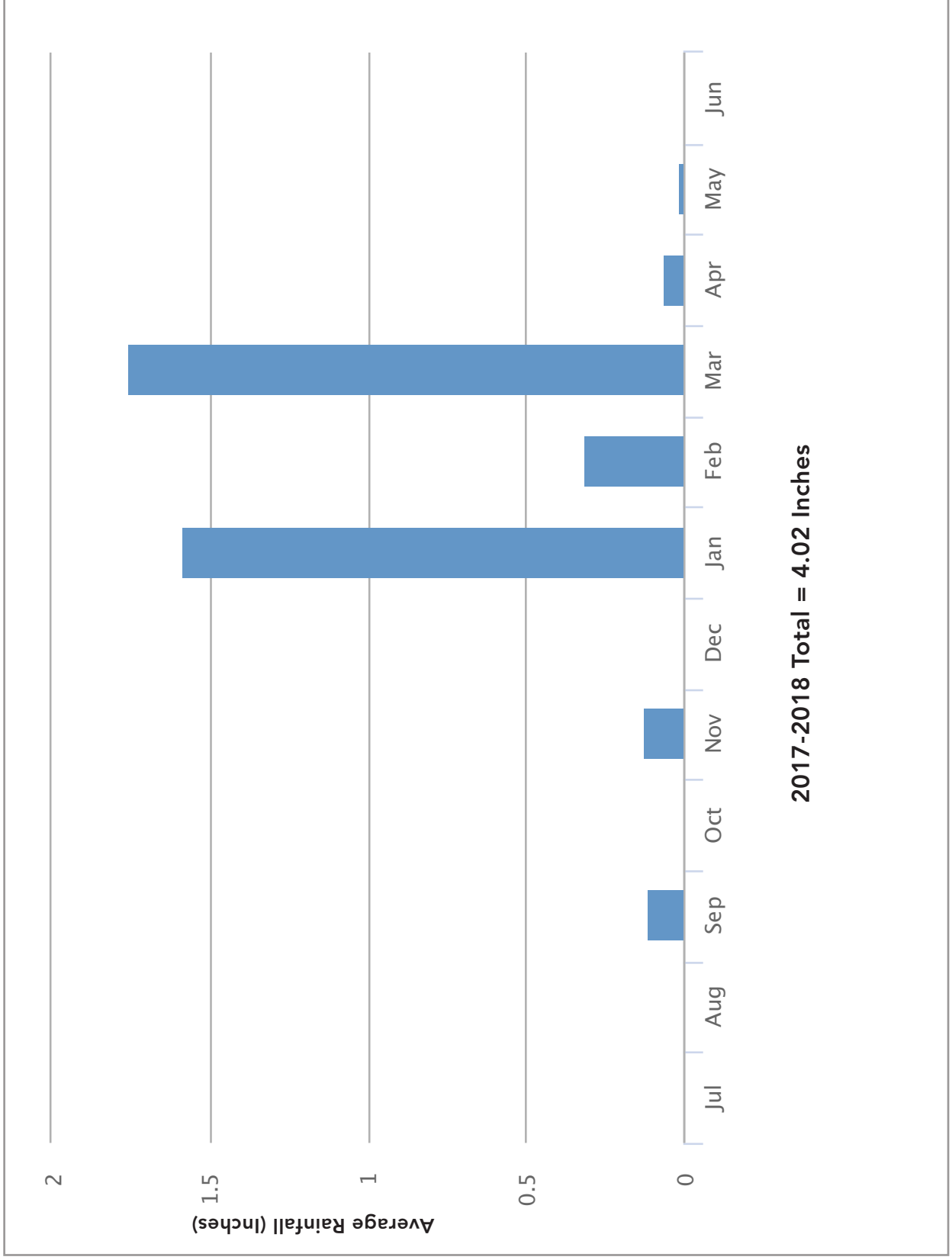


Figure 5 - Total Water Use

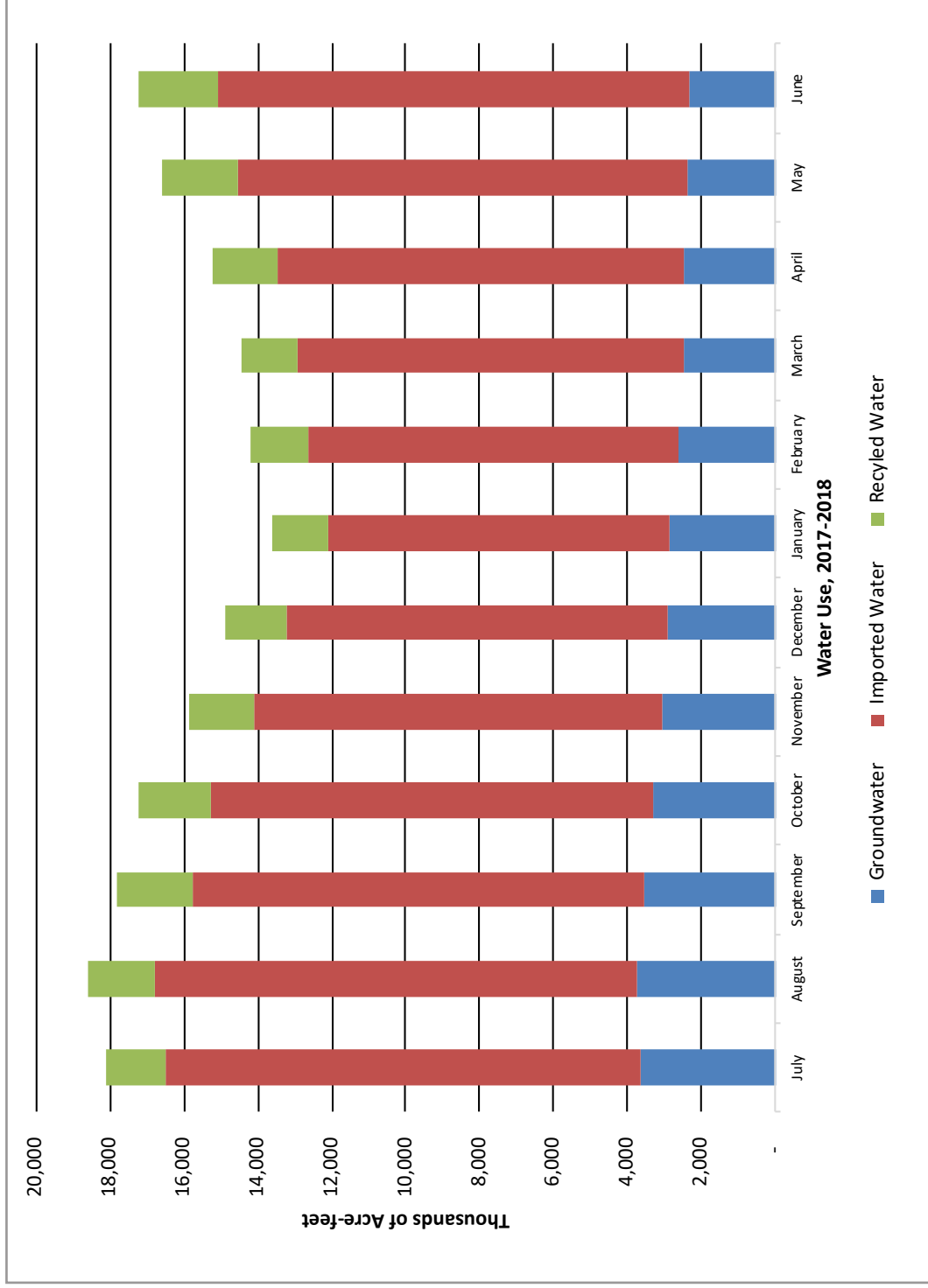
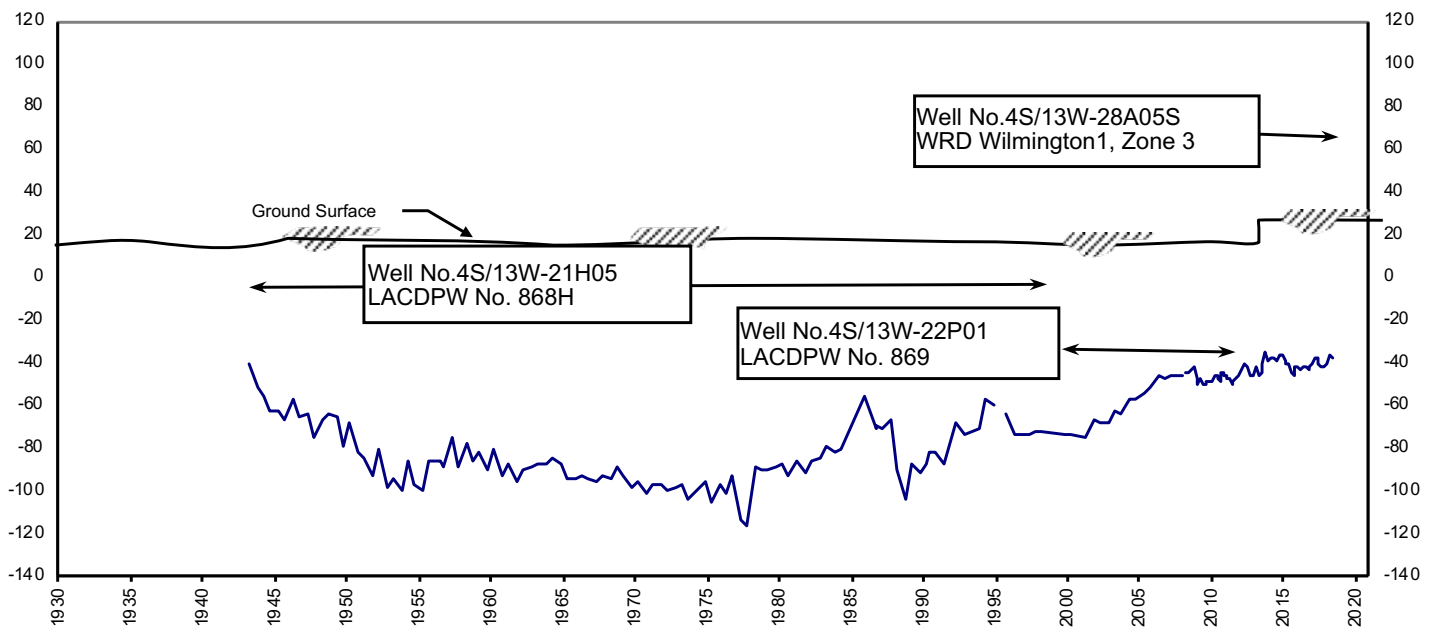
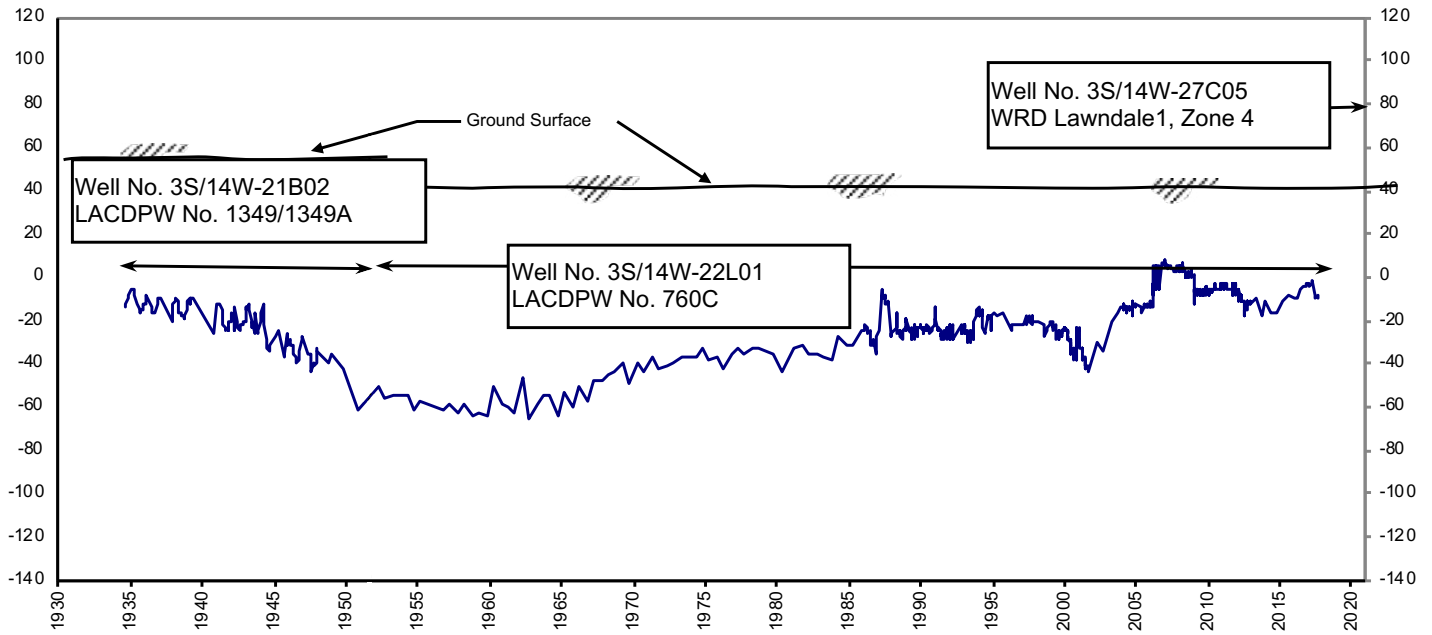




Figure 6 - Water Level Hydrographs



See Figure 3 for well locations.

X-Axis: Year

Y-Axis: Groundwater Elevation (feet mean sea level)

# Appendix A

## Groundwater Extractions

## Appendix A - Groundwater Extractions (acre-feet)

7002 - ABC Nursery, Inc.	JUL	AUG	SEPT	OCT	NOV	DEC	JAN	FEB	MAR	APR	MAY	JUN	TOTAL
<b>SWN/Owner No.</b>	<b>3.00</b>	<b>2.00</b>	<b>0.00</b>	<b>4.00</b>	<b>1.00</b>	<b>1.00</b>	<b>1.00</b>	<b>1.00</b>	<b>1.00</b>	<b>2.00</b>	<b>2.00</b>	<b>0.00</b>	<b>18.00</b>
003S013W29F011S/1	3.00	2.00	0.00	4.00	1.00	1.00	1.00	1.00	1.00	2.00	2.00	0.00	18.00
<b>7807 - Andeavor Logistics</b>	<b>JUL</b>	<b>AUG</b>	<b>SEPT</b>	<b>OCT</b>	<b>NOV</b>	<b>DEC</b>	<b>JAN</b>	<b>FEB</b>	<b>MAR</b>	<b>APR</b>	<b>MAY</b>	<b>JUN</b>	<b>TOTAL</b>
<b>SWN/Owner No.</b>	<b>521.04</b>	<b>520.95</b>	<b>480.25</b>	<b>490.51</b>	<b>482.73</b>	<b>473.15</b>	<b>645.81</b>	<b>352.58</b>	<b>402.52</b>	<b>406.92</b>	<b>420.86</b>	<b>383.18</b>	<b>5,580.50</b>
004S013W21L001S/3	0.00	0.00	0.00	0.00	0.00	0.00	0.00	0.00	0.00	0.00	0.00	0.00	0.00
009S099W99P099S/REMED	4.32	4.90	3.35	3.20	4.53	7.09	219.80	4.11	4.66	4.73	5.66	3.87	270.22
004S013W21H006S/8	0.00	0.00	0.00	0.00	0.00	0.00	0.00	0.00	0.00	0.00	0.00	0.00	0.00
004S013W27N006S/SHE12	117.09	0.00	115.45	117.61	116.32	114.14	113.73	94.16	110.49	105.70	108.55	101.35	1,214.59
004S013W21H007S/12	0.00	0.00	0.00	0.00	0.00	0.00	0.00	0.00	0.00	0.00	0.00	0.00	0.00
004S013W21J002S/10	13.16	4.13	0.38	0.00	0.03	11.79	11.37	0.00	0.00	0.00	0.00	6.08	46.94
004S013W34F007S/SHE11	0.00	123.70	0.00	0.00	0.00	0.00	0.00	0.00	0.00	0.00	0.00	0.00	123.70
004S013W21H005S/7	0.00	0.00	0.00	0.00	0.00	0.00	0.00	0.00	0.00	0.00	0.00	0.00	0.00
004S013W16J006S/WW-14	207.25	204.86	197.32	204.36	193.06	168.57	132.95	120.52	133.10	134.59	133.87	118.44	1,948.89
004S013W22F002S/HA001	0.00	0.00	0.00	0.00	0.00	0.00	0.00	0.00	0.00	0.00	0.00	0.00	0.00
004S013W22E001S/5	0.00	0.00	0.00	0.00	0.00	0.00	0.00	0.00	0.00	0.00	0.00	0.00	0.00
004S013W27M006S/15	156.31	162.32	141.76	140.77	146.51	149.19	147.58	112.57	144.25	141.79	150.85	133.11	1,727.01
004S013W22F001S/9	0.00	0.00	0.00	0.00	0.00	0.00	0.00	0.00	0.00	0.00	0.00	0.00	0.00
004S013W16J005S/13	0.00	0.00	0.00	0.00	0.00	0.00	0.00	0.00	0.00	0.00	0.00	0.00	0.00
004S013W16R002S/11	0.00	0.00	0.00	0.00	0.00	0.00	0.00	0.00	0.00	0.00	0.00	0.00	0.00
004S013W27M005S/9	0.00	0.00	0.00	0.00	0.00	0.00	0.00	0.00	0.00	0.00	0.00	0.00	0.00
004S013W22F007S/SRP12	22.91	21.04	21.99	24.57	22.28	22.37	20.38	21.22	10.02	20.11	21.93	20.33	249.15
004S013W21H002S/4	0.00	0.00	0.00	0.00	0.00	0.00	0.00	0.00	0.00	0.00	0.00	0.00	0.00

## Appendix A - Groundwater Extractions Continued

7052 - California Water Service Co./Hawthorne Lease		JUL	AUG	SEPT	OCT	NOV	DEC	JAN	FEB	MAR	APR	MAY	JUN	TOTAL
<b>SWN/Owner No.</b>		157.87	124.23	147.66	155.22	150.13	160.34	112.46	127.82	130.68	80.71	94.62	113.62	1,555.36
003S014W09N005S/12		0.00	0.00	0.00	0.00	0.00	0.00	0.00	0.00	0.00	0.00	0.00	0.00	0.00
003S014W09M001S/13		157.87	124.23	147.66	155.22	150.13	160.34	112.46	127.82	130.68	80.71	94.62	113.62	1,555.36
003S014W09P001S/8		0.00	0.00	0.00	0.00	0.00	0.00	0.00	0.00	0.00	0.00	0.00	0.00	0.00
003S014W09N004S/4		0.00	0.00	0.00	0.00	0.00	0.00	0.00	0.00	0.00	0.00	0.00	0.00	0.00
<b>7050 - California Water Service Company</b>		<b>JUL</b>	<b>AUG</b>	<b>SEPT</b>	<b>OCT</b>	<b>NOV</b>	<b>DEC</b>	<b>JAN</b>	<b>FEB</b>	<b>MAR</b>	<b>APR</b>	<b>MAY</b>	<b>JUN</b>	<b>TOTAL</b>
<b>SWN/Owner No.</b>		83.00	90.42	89.24	100.81	82.20	100.24	96.86	87.25	98.10	93.46	97.10	67.62	1,086.30
003S014W32A002S/08-02		0.06	0.00	0.00	0.00	0.00	0.00	0.34	0.16	0.26	0.19	0.52	0.18	1.71
003S014W29J001S/22-01		82.64	90.42	89.24	100.81	82.20	100.24	96.52	87.09	97.60	93.05	96.18	67.32	1,083.31
003S014W29H001S/30-01		0.30	0.00	0.00	0.00	0.00	0.00	0.00	0.00	0.24	0.22	0.40	0.12	1.28
<b>7053 - California Water Service Company (Dominguez)</b>		<b>JUL</b>	<b>AUG</b>	<b>SEPT</b>	<b>OCT</b>	<b>NOV</b>	<b>DEC</b>	<b>JAN</b>	<b>FEB</b>	<b>MAR</b>	<b>APR</b>	<b>MAY</b>	<b>JUN</b>	<b>TOTAL</b>
<b>SWN/Owner No.</b>		328.02	380.53	236.96	225.33	385.85	373.11	418.11	282.87	327.09	370.05	413.30	318.53	4,059.75
004S013W17D002S/219-01		0.00	0.00	0.00	0.00	0.00	0.00	0.00	0.00	0.00	0.00	0.00	0.00	0.00
004S013W15F001S/277-01		59.27	88.18	87.40	97.01	96.05	100.26	113.61	71.56	96.46	91.87	88.69	0.46	990.82
004S013W15A011S/215-01		83.23	81.24	25.40	0.60	76.25	39.09	97.97	60.91	82.81	77.22	82.10	82.12	788.94
004S013W29E006S/275-01		0.00	0.21	0.31	0.00	0.00	0.00	0.00	0.00	0.00	0.00	0.00	0.15	0.67
004S013W17D003S/219-02		0.00	0.00	0.00	0.00	0.01	0.00	0.00	0.00	0.00	0.00	0.00	0.00	0.01
004S013W20C001S/279-01		34.29	86.18	46.47	117.54	85.74	99.65	110.44	68.05	96.89	53.70	90.03	88.87	977.85
004S013W15A006S/RCOMP		0.00	0.00	0.00	0.00	0.00	0.00	0.00	0.00	0.00	0.00	0.00	0.00	0.00
004S013W15B005S/215-02		0.00	0.00	0.00	0.00	0.00	0.00	0.00	0.00	0.00	0.00	0.00	0.00	0.00
004S013W15A014S/298-01		148.84	121.47	71.46	0.70	127.80	134.11	96.09	82.35	50.93	147.26	152.48	146.93	1,280.42
004S013W11P002S/294-01		2.39	3.25	5.92	9.48	0.00	0.00	0.00	0.00	0.00	0.00	0.00	0.00	21.04

## Appendix A - Groundwater Extractions Continued

7093 - ConocoPhillips Company		JUL	AUG	SEPT	OCT	NOV	DEC	JAN	FEB	MAR	APR	MAY	JUN	TOTAL
<b>SWN/Owner No.</b>		528.60	530.81	519.95	474.35	461.44	453.22	467.92	433.82	459.92	416.13	346.84	490.54	5,583.54
004S013W31N003S/LA005		0.00	0.00	0.00	0.00	0.00	0.00	0.00	0.00	0.00	0.00	0.00	0.00	0.00
004S013W21R001S/WI002		0.00	0.00	0.00	0.00	0.00	0.00	0.00	0.00	0.00	0.00	0.00	0.00	0.00
004S013W31N004S/LA006		98.47	97.50	93.86	95.72	91.87	37.84	58.86	43.42	8.49	69.34	111.05	49.12	855.54
004S013W21R010S/W-4		0.00	0.00	0.00	0.00	0.00	0.00	0.00	0.00	0.00	0.00	0.00	0.00	0.00
004S013W31P003S/7		145.41	158.01	159.67	160.58	156.41	200.81	187.05	176.29	240.54	142.47	32.68	217.87	1,977.79
004S013W21J003S/5		284.72	275.30	266.42	218.05	213.16	214.57	222.01	214.11	210.89	204.32	203.11	223.55	2,750.21
<b>7623 - Eco Services Operations, LLC</b>		<b>JUL</b>	<b>AUG</b>	<b>SEPT</b>	<b>OCT</b>	<b>NOV</b>	<b>DEC</b>	<b>JAN</b>	<b>FEB</b>	<b>MAR</b>	<b>APR</b>	<b>MAY</b>	<b>JUN</b>	<b>TOTAL</b>
<b>SWN/Owner No.</b>		47.77	47.64	47.73	50.53	49.38	48.20	21.42	26.65	39.64	38.93	47.23	44.42	509.54
004S013W10C004S/2		47.77	47.64	47.73	50.53	49.38	48.20	21.42	26.65	39.64	38.93	47.23	44.42	509.54
<b>7226 - Golden State Water Company</b>		<b>JUL</b>	<b>AUG</b>	<b>SEPT</b>	<b>OCT</b>	<b>NOV</b>	<b>DEC</b>	<b>JAN</b>	<b>FEB</b>	<b>MAR</b>	<b>APR</b>	<b>MAY</b>	<b>JUN</b>	<b>TOTAL</b>
<b>SWN/Owner No.</b>		568.16	592.54	605.72	562.91	516.18	549.29	552.10	562.85	656.04	644.09	623.06	594.80	7,027.74
003S014W15B003S/Goldmedal #1		115.16	114.77	107.60	109.84	103.52	103.73	103.65	92.45	101.72	98.28	99.94	94.92	1,245.58
003S014W21M001S/C-H001		0.00	0.00	0.00	0.00	0.00	0.00	0.00	0.00	0.00	0.00	0.00	0.00	0.00
003S014W13B003S/BA004		2.04	0.22	0.12	0.07	0.04	7.81	5.22	0.08	4.78	2.53	2.57	0.06	25.54
003S014W22L001S/CD001		0.04	0.05	0.03	0.06	0.02	1.89	0.10	0.08	2.51	0.04	0.00	0.00	4.82
003S014W15P002S/Doty2		107.68	81.48	105.68	104.61	111.33	114.95	115.97	99.31	103.17	103.02	109.07	106.36	1,262.63
003S014W14D002S/129-02		6.05	0.35	0.08	0.03	0.15	4.30	0.20	0.17	5.95	6.38	5.89	0.31	29.86
003S014W13B004S/BA005		3.65	0.37	0.16	0.10	0.08	12.79	4.93	0.10	8.71	3.93	4.73	0.14	39.69
003S014W13J010S/S0006		0.00	0.00	0.00	0.00	0.00	0.00	0.00	0.00	0.00	0.16	5.83	1.16	7.15
003S014W02Q001S/TR004		0.00	0.00	0.00	0.00	0.00	0.00	0.00	0.00	0.00	0.00	0.00	0.00	0.00
003S014W03K004S/YU005		0.00	0.00	0.12	0.00	0.00	0.00	0.00	0.00	0.00	0.00	0.00	0.00	0.12

## Appendix A - Groundwater Extractions Continued

7226 - Golden State Water Company		JUL	AUG	SEPT	OCT	NOV	DEC	JAN	FEB	MAR	APR	MAY	JUN	TOTAL
<b>SWN/Owner No.</b>		568.16	592.54	605.72	562.91	516.18	549.29	552.10	562.85	656.04	644.09	623.06	594.80	7,027.74
003S014W25P004S/DA001		80.91	0.00	0.04	0.06	0.02	0.00	0.00	0.00	3.57	3.68	3.69	0.37	92.34
003S014W15P001S/Doty1		83.80	66.25	74.86	25.42	0.00	0.00	0.00	43.89	78.40	60.08	0.00	0.00	432.70
003S014W25P006S/DA002		41.36	201.21	193.67	194.63	177.52	178.03	194.40	211.83	222.43	242.95	269.68	270.85	2,398.56
003S014W13J009S/S0005		127.47	127.84	123.19	128.09	123.50	125.79	127.63	114.94	124.80	123.04	121.66	120.63	1,488.58
003S014W03K005S/YU004		0.00	0.00	0.17	0.00	0.00	0.00	0.00	0.00	0.00	0.00	0.00	0.00	0.17
<b>7270 - Hillside Memorial Park</b>		<b>JUL</b>	<b>AUG</b>	<b>SEPT</b>	<b>OCT</b>	<b>NOV</b>	<b>DEC</b>	<b>JAN</b>	<b>FEB</b>	<b>MAR</b>	<b>APR</b>	<b>MAY</b>	<b>JUN</b>	<b>TOTAL</b>
<b>SWN/Owner No.</b>		16.70	15.67	11.36	10.69	5.20	4.32	4.67	2.79	3.24	3.68	6.51	13.04	97.87
002S014W19K004S/3		16.70	15.67	11.36	10.69	5.20	4.32	4.67	2.79	3.24	3.68	6.51	13.04	97.87
<b>7310 - Inglewood, City of</b>		<b>JUL</b>	<b>AUG</b>	<b>SEPT</b>	<b>OCT</b>	<b>NOV</b>	<b>DEC</b>	<b>JAN</b>	<b>FEB</b>	<b>MAR</b>	<b>APR</b>	<b>MAY</b>	<b>JUN</b>	<b>TOTAL</b>
<b>SWN/Owner No.</b>		195.84	198.87	189.22	182.56	183.80	182.12	175.85	152.16	156.82	153.30	157.50	145.06	2,073.10
003S014W10F002S/4		0.00	0.00	0.00	0.00	0.00	0.00	0.00	0.00	0.00	0.00	0.00	0.00	0.00
003S014W10G003S/1		58.09	60.21	58.51	54.75	51.97	51.69	46.78	39.32	42.80	39.85	39.81	38.06	581.84
003S014W03D003S/6		80.48	79.61	78.78	73.26	77.80	76.17	73.85	63.83	66.56	64.12	66.55	60.12	861.13
003S014W10G004S/2		57.27	59.05	51.93	54.55	54.03	54.26	55.22	49.01	47.46	49.33	51.14	46.88	630.13
003S014W03F002S/Yukon well		0.00	0.00	0.00	0.00	0.00	0.00	0.00	0.00	0.00	0.00	0.00	0.00	0.00
<b>7364 - Kinder Morgan Liquids Terminals LLC</b>		<b>JUL</b>	<b>AUG</b>	<b>SEPT</b>	<b>OCT</b>	<b>NOV</b>	<b>DEC</b>	<b>JAN</b>	<b>FEB</b>	<b>MAR</b>	<b>APR</b>	<b>MAY</b>	<b>JUN</b>	<b>TOTAL</b>
<b>SWN/Owner No.</b>		4.42	2.45	2.93	4.83	4.14	4.69	0.01	0.19	3.75	3.48	0.00	0.93	31.82
None/None		4.42	2.45	2.93	4.83	4.14	4.69	0.01	0.19	3.75	3.48	0.00	0.93	31.82

## Appendix A - Groundwater Extractions Continued

7450 - Lomita, City of	JUL	AUG	SEPT	OCT	NOV	DEC	JAN	FEB	MAR	APR	MAY	JUN	TOTAL
<b>SWN/Owner No.</b>	70.19	68.16	62.06	55.37	49.27	50.38	47.68	39.72	36.73	35.86	47.20	56.97	619.59
004S014W35E007S/5	70.19	68.16	62.06	55.37	49.27	50.38	47.68	39.72	36.73	35.86	47.20	56.97	619.59
7435 - Los Angeles County Department of Parks & Recreation	JUL	AUG	SEPT	OCT	NOV	DEC	JAN	FEB	MAR	APR	MAY	JUN	TOTAL
<b>SWN/Owner No.</b>	65.39	57.99	52.17	58.77	24.07	35.97	16.14	25.82	14.70	45.42	46.24	54.61	497.29
003S014W11J002S/1397C	0.00	0.00	0.00	0.00	0.00	0.00	0.00	0.00	0.00	0.00	0.00	0.00	0.00
003S014W27C001S/00761	65.39	57.99	52.17	58.77	24.07	35.97	16.14	25.82	14.70	45.42	46.24	54.61	497.29
7490 - Manhattan Beach, City of	JUL	AUG	SEPT	OCT	NOV	DEC	JAN	FEB	MAR	APR	MAY	JUN	TOTAL
<b>SWN/Owner No.</b>	54.73	49.03	53.32	49.15	33.97	32.68	5.82	1.28	11.45	30.12	17.10	27.52	366.17
003S014W29C003S/15	54.73	49.03	53.32	49.15	33.97	32.68	5.82	1.28	0.00	2.26	17.10	27.52	326.86
003S014W29D005S/11A	0.00	0.00	0.00	0.00	0.00	0.00	0.00	0.00	11.45	27.86	0.00	0.00	39.31
7514 - Montrose Chemical Corporation of California	JUL	AUG	SEPT	OCT	NOV	DEC	JAN	FEB	MAR	APR	MAY	JUN	TOTAL
<b>SWN/Owner No.</b>	0.02	0.97	0.09	0.28	-0.02	1.69	57.96	0.85	-0.10	-0.49	-0.38	0.18	61.05
004S014W12B001S/MW-13	0.00	0.00	0.00	0.00	0.00	0.00	0.00	0.00	0.00	0.00	0.00	0.00	0.00
None/BF-EW-6	0.00	0.00	0.00	0.00	0.00	0.00	0.00	0.00	0.00	0.00	0.00	0.43	0.43
004S014W01P002S/UBAEW1	0.00	0.01	0.00	0.01	0.01	0.45	0.49	0.13	0.05	0.00	0.00	0.00	1.15
004S014W01N002S/G-IW-1	0.00	0.11	0.00	0.00	-0.12	-6.47	-5.65	-0.73	-0.37	0.00	0.00	0.00	-13.23
004S014W12B006S/G-EW-1	0.01	0.17	0.00	0.05	0.08	8.27	8.16	1.94	0.59	0.00	0.03	0.02	19.32
004S014W12A002S/G-IW-4	0.00	0.00	0.00	0.00	0.00	0.00	0.00	0.00	0.00	0.00	0.00	0.00	0.00
None/G-EW-4	0.01	0.15	0.04	0.05	0.08	7.18	7.26	1.62	0.51	0.00	0.03	0.02	16.95
004S014W01N004S/G-IW-7	0.00	0.02	-0.05	0.00	-0.11	-12.82	-15.54	-2.71	-1.06	0.00	0.11	0.11	-32.05
004S014W12J001S/BF-EW-2	0.00	0.06	0.00	0.03	0.05	4.63	62.34	1.02	0.35	0.00	0.01	0.01	68.50
004S014W01P003S/BF-EW-5	0.00	0.02	0.01	0.01	0.01	0.77	0.88	0.07	0.04	0.00	0.00	0.00	1.81

## Appendix A - Groundwater Extractions Continued

7514 - Montrose Chemical Corporation of California		JUL	AUG	SEPT	OCT	NOV	DEC	JAN	FEB	MAR	APR	MAY	JUN	TOTAL
<b>SWN/Owner No.</b>		0.02	0.97	0.09	0.28	-0.02	1.69	57.96	0.85	-0.10	-0.49	-0.38	0.18	61.05
004S014W12B004S/MBFBEW1		0.00	0.00	0.00	0.00	0.00	0.00	0.00	0.00	0.00	0.00	0.00	0.00	0.00
004S014W12B002S/UBAEW3		0.00	0.01	0.01	0.01	0.01	0.01	0.00	0.01	0.00	0.00	0.00	0.00	0.06
004S014W01N003S/G-IW-3		0.00	0.05	-0.04	0.00	-0.24	-14.92	-16.89	-2.39	-0.89	-0.49	-0.63	-0.43	-36.87
004S014W12L001S/G-EW-3		0.00	0.02	0.01	0.01	0.02	0.27	0.64	0.18	0.11	0.00	0.01	0.00	1.27
004S014W12A004S/G-IW-6		0.00	0.00	0.00	0.00	0.00	0.00	0.00	0.00	0.00	0.00	0.00	0.00	0.00
004S014W12B005S/BF-EW-1		0.00	0.04	0.01	0.01	0.02	1.72	2.38	0.32	0.16	0.00	0.01	0.00	4.67
004S014W12J002S/BF-EW-4		0.00	0.19	0.06	0.06	0.10	9.47	9.31	0.10	0.03	0.00	0.03	0.02	19.37
004S014W12B003S/MW-14		0.00	0.00	0.00	0.00	0.00	0.00	0.00	0.00	0.00	0.00	0.00	0.00	0.00
None/UBAEW2		0.00	0.00	0.00	0.00	0.00	0.00	0.00	0.00	0.00	0.00	0.00	0.00	0.00
004S014W12A001S/G-IW-2		0.00	0.00	0.00	0.00	0.00	0.00	0.00	0.00	0.00	0.00	0.00	0.00	0.00
004S014W12J003S/G-EW-2		0.00	0.04	0.01	0.01	0.02	1.73	2.39	0.53	0.14	0.00	0.01	0.00	4.88
004S014W12A003S/G-IW-5		0.00	0.00	0.00	0.00	-0.01	0.00	0.00	0.00	0.00	0.00	0.00	0.00	-0.01
None/G-EW-5		0.00	0.00	0.00	0.00	0.00	0.00	0.00	0.00	0.00	0.00	0.00	0.00	0.00
004S014W12G001S/BF-EW-3		0.00	0.08	0.03	0.03	0.06	1.40	2.19	0.76	0.24	0.00	0.01	0.00	4.80
<b>7580 - Pacific Crest Cemetery Company</b>		<b>JUL</b>	<b>AUG</b>	<b>SEPT</b>	<b>OCT</b>	<b>NOV</b>	<b>DEC</b>	<b>JAN</b>	<b>FEB</b>	<b>MAR</b>	<b>APR</b>	<b>MAY</b>	<b>JUN</b>	<b>TOTAL</b>
<b>SWN/Owner No.</b>		13.71	4.99	12.22	5.44	8.91	7.30	6.96	1.16	2.50	8.12	11.94	17.06	100.31
003S014W33E001S/7Z 83		13.71	4.99	12.22	5.44	8.91	7.30	6.96	1.16	2.50	8.12	11.94	17.06	100.31
<b>7655 - Rolling Hills Country Club</b>		<b>JUL</b>	<b>AUG</b>	<b>SEPT</b>	<b>OCT</b>	<b>NOV</b>	<b>DEC</b>	<b>JAN</b>	<b>FEB</b>	<b>MAR</b>	<b>APR</b>	<b>MAY</b>	<b>JUN</b>	<b>TOTAL</b>
<b>SWN/Owner No.</b>		50.00	46.00	62.00	24.00	11.00	8.00	13.00	9.00	5.00	8.00	16.00	26.00	278.00
004S014W35F002S/PLANT		0.00	0.00	0.00	0.00	0.00	0.00	0.00	0.00	0.00	0.00	0.00	0.00	0.00
004S014W35E006S/2		50.00	46.00	62.00	24.00	11.00	8.00	13.00	9.00	5.00	8.00	16.00	26.00	278.00



## Appendix A - Groundwater Extractions Continued

7659 - Roman Catholic Archbishop of Los Angeles		JUL	AUG	SEPT	OCT	NOV	DEC	JAN	FEB	MAR	APR	MAY	JUN	TOTAL
<b>SWN/Owner No.</b>		38.18	40.65	34.65	35.03	14.59	1.51	15.73	25.24	0.90	21.48	35.61	38.71	302.28
002S014W18Q002S/HOLY1		0.00	0.00	0.00	2.77	14.59	0.00	0.00	0.00	0.00	0.00	0.00	0.00	17.36
002S014W18Q001S/OLY0		0.00	0.00	0.00	0.00	0.00	0.00	0.00	0.00	0.00	0.00	0.00	0.00	0.00
002S014W18J001S/AA		38.18	40.65	34.65	32.26	0.00	1.51	15.73	25.24	0.90	21.48	35.61	38.71	284.92
7701 - Shell Oil Co NCWUP		JUL	AUG	SEPT	OCT	NOV	DEC	JAN	FEB	MAR	APR	MAY	JUN	TOTAL
<b>SWN/Owner No.</b>		15.11	24.92	22.88	11.55	8.56	8.62	8.37	17.09	21.38	15.40	7.40	14.28	175.56
004S013W10E007S/DD-3		2.38	1.92	2.42	0.75	1.35	2.84	2.79	2.27	2.85	2.26	1.99	0.29	24.11
004S013W09D001S/DR-7		0.03	0.00	0.00	0.00	0.00	0.05	0.00	0.04	0.04	0.06	0.08	0.10	0.40
004S013W10E006S/R-123		2.38	1.92	2.42	0.75	1.35	2.84	2.79	2.27	2.85	2.26	1.99	0.29	24.11
004S013W10K002S/DOM-GSP-R2M		7.91	19.16	15.62	9.30	4.51	0.00	0.00	10.20	12.75	8.50	1.27	13.21	102.43
004S013W10E005S/R-122		2.38	1.92	2.42	0.75	1.35	2.84	2.79	2.27	2.85	2.26	1.99	0.29	24.11
004S013W09P001S/DR-18		0.03	0.00	0.00	0.00	0.00	0.05	0.00	0.04	0.04	0.06	0.08	0.10	0.40
7720 - Southern California Edison Co.		JUL	AUG	SEPT	OCT	NOV	DEC	JAN	FEB	MAR	APR	MAY	JUN	TOTAL
<b>SWN/Owner No.</b>		3.06	2.68	3.01	1.95	1.86	1.59	2.14	0.88	1.59	2.33	3.18	3.61	27.88
003S014W34B002S/FRESA		0.00	0.00	0.00	0.00	0.00	0.00	0.00	0.00	0.00	0.00	0.00	0.00	0.00
004S013W14A007S/MORR1		0.00	0.00	0.00	0.00	0.00	0.00	0.00	0.00	0.00	0.00	0.00	0.00	0.00
004S013W27A002S/HANSN		0.00	0.00	0.00	0.00	0.00	0.00	0.00	0.00	0.00	0.00	0.00	0.00	0.00
003S014W34N004S/SCECO		3.06	2.68	3.01	1.95	1.86	1.59	2.14	0.88	1.59	2.33	3.18	3.61	27.88
7510 - Torrance Refining Company		JUL	AUG	SEPT	OCT	NOV	DEC	JAN	FEB	MAR	APR	MAY	JUN	TOTAL
<b>SWN/Owner No.</b>		65.80	97.50	96.21	83.00	63.16	70.17	85.78	81.01	82.44	72.56	73.28	84.36	955.27
004S014W02M003S/RW-3		0.00	0.00	0.00	0.00	0.00	0.00	0.00	0.00	0.00	0.00	0.00	0.00	0.00
None/None		0.00	0.00	0.00	0.00	0.00	0.00	0.00	0.00	0.00	0.00	0.00	0.00	0.00

## Appendix A - Groundwater Extractions Continued

7510 - Torrance Refining Company	JUL	AUG	SEPT	OCT	NOV	DEC	JAN	FEB	MAR	APR	MAY	JUN	TOTAL
<b>SWN/Owner No.</b>	<b>65.80</b>	<b>97.50</b>	<b>96.21</b>	<b>83.00</b>	<b>63.16</b>	<b>70.17</b>	<b>85.78</b>	<b>81.01</b>	<b>82.44</b>	<b>72.56</b>	<b>73.28</b>	<b>84.36</b>	<b>955.27</b>
004S014W02N001S/EW-01R	0.00	0.00	0.00	0.00	0.00	0.00	0.00	0.00	0.00	0.00	0.00	0.00	0.00
004S014W02M004S/EW-1	24.60	30.94	29.71	30.32	27.42	23.75	29.46	26.48	30.55	27.50	10.38	26.40	317.51
004S014W02L003S/EW-4	0.00	3.53	3.78	7.97	7.47	6.63	0.00	27.58	0.00	3.02	0.00	0.00	59.98
004S014W02M002S/RW-2	0.00	0.00	0.00	0.00	0.00	0.00	0.00	0.00	0.00	0.00	0.00	0.00	0.00
004S014W03M001S/M-06	0.00	0.00	0.00	0.00	0.00	0.00	0.00	0.00	0.00	0.00	0.00	0.00	0.00
004S014W02L002S/EW-3	3.28	9.36	9.21	9.85	7.31	0.00	0.00	0.00	4.75	0.56	1.00	0.04	45.36
None/EW-6	0.00	0.00	0.00	0.00	0.00	0.00	0.00	0.00	0.00	0.00	0.00	0.00	0.00
004S014W02M001S/RW-1	0.00	0.00	0.00	0.00	0.00	0.00	0.00	0.00	0.00	0.00	0.00	0.00	0.00
004S014W03L007S/T0010	0.00	0.00	0.00	0.00	0.00	0.00	0.00	0.00	0.00	0.00	0.00	0.00	0.00
004S014W03F001S/M-07	0.00	0.00	0.00	0.00	0.00	0.00	0.00	0.00	0.00	0.00	0.00	0.00	0.00
004S014W02L001S/EW-2	20.30	27.44	28.68	29.58	20.96	23.85	29.48	26.95	30.16	29.08	28.14	24.18	318.80
004S014W02F001S/EW-5	17.62	26.23	24.83	5.28	0.00	15.94	26.84	0.00	16.98	12.40	33.76	33.74	213.62

7850 - Torrance, City of	JUL	AUG	SEPT	OCT	NOV	DEC	JAN	FEB	MAR	APR	MAY	JUN	TOTAL
<b>SWN/Owner No.</b>	<b>102.11</b>	<b>176.14</b>	<b>182.38</b>	<b>153.34</b>	<b>174.88</b>	<b>155.07</b>	<b>233.43</b>	<b>197.28</b>	<b>207.86</b>	<b>320.12</b>	<b>415.22</b>	<b>455.54</b>	<b>2,773.37</b>
004S014W14K001S/7	0.00	0.00	0.00	0.00	0.00	0.00	0.00	0.00	0.00	0.00	0.00	0.00	0.00
003S014W34C002S/6	0.00	0.00	0.00	0.00	0.00	0.00	0.00	0.00	0.00	0.00	0.00	0.00	0.00
None/None	0.00	0.00	0.00	0.00	0.00	0.00	46.99	33.50	35.40	142.54	197.02	230.03	685.48
004S014W09A001S/MDR_2	0.00	0.00	0.00	0.00	0.00	0.00	0.00	0.00	0.00	0.00	0.00	0.00	0.00
None/None	0.00	0.00	0.00	0.00	0.00	0.00	24.20	3.02	0.27	1.20	35.62	92.85	157.16
003S014W34C003S/9	102.11	176.14	182.38	153.34	174.88	155.07	162.24	160.76	172.19	176.38	182.58	132.66	1,930.73

## Appendix A - Groundwater Extractions Continued

7913 - Vukelich, Mike Jr.	JUL	AUG	SEPT	OCT	NOV	DEC	JAN	FEB	MAR	APR	MAY	JUN	TOTAL
<b>SWN/Owner No.</b>	4.39	4.45	4.24	4.62	1.61	2.12	1.45	2.30	4.22	4.93	6.89	6.05	47.27
004S013W19J006S/829M	4.39	4.45	4.24	4.62	1.61	2.12	1.45	2.30	4.22	4.93	6.89	6.05	47.27
<b>7054 - West Basin Brewer Desalter</b>	<b>JUL</b>	<b>AUG</b>	<b>SEPT</b>	<b>OCT</b>	<b>NOV</b>	<b>DEC</b>	<b>JAN</b>	<b>FEB</b>	<b>MAR</b>	<b>APR</b>	<b>MAY</b>	<b>JUN</b>	<b>TOTAL</b>
<b>SWN/Owner No.</b>	40.80	31.17	0.47	0.00	0.00	0.00	0.00	0.00	0.00	0.00	15.23	2.31	89.98
004S014W09A002S/232-03	40.80	31.17	0.47	0.00	0.00	0.00	0.00	0.00	0.00	0.00	15.23	2.31	89.98

# Appendix B

## Successions of Adjudicated Rights

June 2018

## Appendix B - Succession of Adjudicated Rights June 2018 (acre-feet)

ABC NURSERY, INC			SUCCESSORS IN PART TO ISABELA J GRANZ ESTATE	13.55	
SUCCESSOR TO JENKINS, HARRY C	1.80		SUCCESSORS IN PART TO GEORGE R MURDOCK	13.75	
SUCCESSOR TO TITLE, SIDNEY R AND CHARLOTTE W	13.60		SOLD TO CITY OF TORRANCE	-59.96	0.00
SUCCESSOR TO VERBURG, WILLIAM AND CLARA B	6.70		TOTAL		
SUCCESSOR IN PART TO UNITED CALIFORNIA BANK	2.00		BAUMAN, GUS A	0.00	
TOTAL	24.10		TRANSFERRED TO PALOS VERDES BEGONIA FARM		0.00
ABELL, FRANK	1.80		TOTAL		
SOLD TO CITY OF INGLEWOOD	-1.80		BEGO CORPORATION	4.10	
TOTAL	0.00		SOLD TO ESTATE OF GOLDA DELANEY	-4.10	0.00
ALCAST FOUNDRY, ET AL	7.20		TOTAL		
SOLD TO CITY OF TORRANCE	-7.20		BELVIDERE MUTUAL WATER CO	33.40	
TOTAL	0.00		SOLD TO CITY OF TORRANCE	-33.40	0.00
ALLIED CHEMICAL CORP (SEE INDUSTRIAL CHEMICAL DIVISION, ALLIED CHEMICAL CORP)			TOTAL		
ALLIED CORP			BLACK, DANA	11.80	
(FORMERLY: ALLIED CHEMICAL CORP)			SUCCESSOR IN PART TO ESTATE OF JOHN GRANT		
(NOW KNOWN AS ALLIED-SIGNAL, INC [EL SEGUNDO OFFICE])			SOLD TO ECOGAS, INC.	-11.80	0.00
ALLIED-SIGNAL, INC (TORRANCE OFFICE)			TOTAL		
SUCCESSOR TO GARRETT CORP, THE	22.50		BOISE CASCADE BUILDING CO	16.92	
(MERGED WITH HONEYWELL INTERNATIONAL, INC AND NAME CHANGED TO HONEYWELL INTERNATIONAL, INC)	-22.50		SUCCESSOR IN PART TO JOUGHIN TORRANCE RANCH		
TOTAL	0.00		SOLD TO INGLEWOOD, CITY OF	-16.92	0.00
ALLIED-SIGNAL, INC (EL SEGUNDO OFFICE) (FORMERLY: ALLIED CORP)	255.00		TOTAL		
(MERGED WITH HONEYWELL INTERNATIONAL, INC AND NAME CHANGED TO HONEYWELL INTERNATIONAL, INC)	-255.00		BOARD OF RETIREMENT-LOS ANGELES CO EMPL RET SYS		
TOTAL	0.00		SECOND WEST COAST BASIN JUDGMENT (NOW KNOWN AS LOS ANGELES COUNTY WESTERN AVE GOLF)		
ALWAG, HILARIO S AND EMMA			BRANDSMA, MAYNARD	11.80	
SUCCESSOR TO T C NAVARRO	53.90		SUCCESSOR IN PART TO ESTATE OF JOHN GRANT		
SUCCESSOR TO PEGGY SWICK	5.50		SOLD TO HILLSIDE MEMORIAL PARK	-11.80	0.00
SOLD TO TORRANCE UNIFIED SCHOOL DISTRICT	-59.40		TOTAL		
TOTAL	0.00		BURKE, W F AND LOIS PRICE	9.50	
AMERICAN PLANT GROWERS, INC			SOLD TO H S SCOTT	-9.50	0.00
SECOND WEST COAST BASIN JUDGMENT	2.60		TOTAL		
SUCCESSOR TO BEN CLUFF DAIRY	7.40		CBS INC	18.50	
SOLD TO SUNRISE GROWERS, INC	-10.00		FORMERLY COLUMBIA BROADCASTING SYS INC		
SUCCESSOR TO SUNRISE GROWERS, INC	10.00		SOLD TO MORAN, RONALD E	-9.00	9.50
SOLD TO VUKELICH MIKE, JR.	-10.00		TOTAL		
TOTAL	0.00		CALIFORNIA, STATE OF		
ANDERSON, REMBERT C	80.50		SUCCESSOR TO ROBERT L FULLILOVE	1.00	
SOLD TO SPARKLETTS DRINKING WATER CORP	-80.50		SUCCESSOR TO JOE MONIZ JR	2.20	
TOTAL	0.00		SUCCESSOR IN PART TO KELLY PIPE CO	16.30	
AQUA CAPITAL MANAGEMENT LP			SUCCESSOR IN PART TO FLAVIO RODRIGUEZ	4.00	
SUCCESSOR TO ECOGAS	11.80		SUCCESSOR IN PART TO A H SMITH (SAM SURBER AND FRED A SMITH)	2.60	
SOLD TO HILLSIDE MEMORIAL PARK AND MORTUARY	-11.80		SOLD TO SPARKLETTS DRINKING WATER CORP	-26.10	0.00
TOTAL	0.00		TOTAL		
ASAHI FANCY KOI, INC			CALIFORNIA WATER SERVICE CO	3,071.00	
SUCCESSOR IN PART TO JAKE ENGELSMA	2.00		SUCCESSOR TO PALOS VERDES WATER CO	999.00	4,070.00
TOTAL	2.00		TOTAL		
ASSOCIATED SOUTHERN INVESTMENT CO (FORMERLY EDISON SECURITIES CO)	46.70		CALIFORNIA WATER SERVICE CO (DOMINGUEZ)	10,162.45	
SOLD TO SOUTHERN CALIFORNIA EDISON CO	-46.70		DOMINGUEZ WATER CO MERGED WITH AND INTO CALIFORNIA WATER SERVICE CO, WATERMASTER ACCOUNT KNOWN AS CALIFORNIA WATER SERVICE CO (DOMINGUEZ)		
TOTAL	0.00		SUCCESSOR IN PART TO HONEYWELL INTERNATIONAL INC	255.00	
ATLANTIC RICHFIELD CO (FORMERLY RICHFIELD OIL CO)	4,428.00		TOTAL		10,417.45
SUCCESSOR TO MANVILLE SALES CORP	881.00		CARSON ESTATE CO	130.00	
SOLD TO TESORO REFINING AND MARKETING COMPANY LLC (6-13-2013)	-5,309.00		SOLD TO DOMINGUEZ WATER CORP	-130.00	0.00
TOTAL	0.00		TOTAL		
AUTOMATION INDUSTRIES			CARSON-HARBOR VILLAGE MOBILE HOME PARK	8.20	
SUCCESSOR TO HARRIS TUBE, INC	0.70		SUCCESSOR TO ETCEMENDY, CAROLINE, ESTATE OF		
TOTAL	0.70		SOLD TO MONTROSE CHEMICAL CORPORATION OF CALIFORNIA (9-28-2011)	-1.20	7.00
BALLMAN, ROSEMARY N	7.00		TOTAL		
SOLD TO UNITED CALIFORNIA BANK	-7.00		CARSON-MADRONA CO	104.00	
TOTAL	0.00		SUCCESSOR TO CHANSLOR-WESTERN OIL AND DEVELOP CO		104.00
BANK OF AMERICA NATIONAL TRUST AND SAVINGS ASSOCIATION (TRUST BI-51)	0.10		TOTAL		
RELEASED TO MICHAEL L ROCKWELL	-0.10		CENTURY BUILDERS	4.70	
TOTAL	0.00		SUCCESSOR TO UNION NURSERY, INC		4.70
BARCLAY HOLLANDER CORP (FORMERLY BARCLAY HOLLANDER CURCI INC)			TOTAL		
SUCCESSOR IN PART TO JOUGHIN TORRANCE RANCH	3.33		CHANDLERS PALOS VERDES SAND AND GRAVEL CORP	95.20	
SOLD TO TORRANCE, CITY OF	-3.33		SECOND WEST COAST BASIN JUDGMENT	15.00	
TOTAL	0.00		SUCCESSOR TO SOUTHWESTERN PORTLAND CEMENT CO	184.00	
BARCLAY HOLLANDER CURCI INC (NOW KNOWN AS BARCLAY HOLLANDER CORP)			SUCCESSOR TO TORRANCE SAND AND GRAVEL CORP		
BARCLAY, RICHARD AND R A WATT	32.66		SOLD TO ROLLING HILLS COUNTRY CLUB	-290.00	4.20
SUCCESSORS TO EMMA J OSBORN			TOTAL		

# West Coast Basin Watermaster

CHANSOR-WESTERN OIL AND DEVELOPMENT CO			DON WILSON BUILDERS		
(FORMERLY CHANSOR-CANFIELD MIDWAY OIL CO)			SUCCESSORS TO KASUO, ISAMU, AND	32.60	
SOLD TO CARSON-MADRONA CO	-104.00		YOSHIKI R KITA		
TOTAL		0.00	SOLD TO DOMINGUEZ WATER CORP	-32.60	
CHEMICALS CO OF ALLIED CORP			TOTAL		0.00
(FORMERLY INDUSTRIAL CHEMICAL DIVISION, ALLIED			DOUGLAS AIRCRAFT CO, INC		
CHEMICAL CORP)			(SEE MCDONNELL DOUGLAS CORP)		
(NOW KNOWN AS ALLIED CORP)			EARLY, H J AND DAISY	111.00	
			SOLD TO DOMINGUEZ WATER CORP	-91.00	
			SOLD TO SAMUEL R AND RAYMOND S	-20.00	
			FUJIMOTO		
CHEVRON USA INC	4,541.70		TOTAL		0.00
(FORMERLY STANDARD OIL CO OF CALIFORNIA)			ECOGAS, INC.		
SUBJECT TO LONG TERM LEASE FROM	59.60		SUCCESSOR TO BLACK, DANA	11.80	
ISABELLA GRANZ PER JUDGEMENT			SOLD TO AQUA CAPITAL MANAGEMENT LP	-11.80	
TOTAL		4,601.30	TOTAL		0.00
CHRISTIE, CLEM, DON C FOHL AND LEON LARSON	0.02		ECO SERVICES OPERATIONS LLC	521.00	
(TRUSTEES OF WILMINGTON CEMETERY ASSOC)			(FORMERLY SOLVAY USA INC.)		
ABANDONED WATER RIGHT	-0.02		TOTAL		521.00
TOTAL		0.00	EDISON SECURITIES CO		
CHURCHILL DOWNS CALIFORNIA CO			(NOW KNOWN AS ASSOCIATED SOUTHERN		
SUCCESSOR TO HOLLYWOOD PARK	282.00		INVESTMENT CO)		
OPERATING CO			EL SEGUNDO, CITY OF	953.00	
SOLD TO HOLLYWOOD PARK LAND COMPANY,	-282.00		TOTAL		953.00
LLC			ENGELSMA, JAKE		
TOTAL		0.00	SUCCESSOR TO WILBUR HORNSTRA	14.10	
CLUFF, BEN DAIRY			SOLD TO ASAHI FANCY KOI, INC	-2.00	
SUCCESSOR TO EDWARD AND EMILY COST	7.40		TRANSFERRED TO SUSAN ENGELSMA,	-12.10	
SOLD TO AMERICAN PLANT GROWERS, INC	-7.40		TRUSTEE ET AL		
TOTAL		0.00	TOTAL		0.00
COAST FOREST PRODUCTS			ENGELSMA, SUSAN; TRUSTEE OF THE SUSAN		
SUCCESSOR TO SOUTHWEST STEEL ROLLING	3.40		ENGELSMA TRUST		
MILLS			TRANSFERRED FROM JAKE ENGLESMA	12.10	
SOLD TO GEORGIA-PACIFIC CORP	-3.40		TOTAL		12.10
TOTAL		0.00	EQUILON ENTERPRISES, LLC		
COASTLINE CHURCH OF CHRIST			SUCCESSOR TO TEXACO REFINING AND	3,432.00	
SUCCESSOR TO LERMENS, EVELYN	0.70		MARKETING, INC		
TOTAL		0.70	SOLD TO SHELL OIL PRODUCTS US	-3,432.00	
COLLISTER, CAMERON			TOTAL		0.00
SUCCESSOR TO JOUGHIN TORRANCE RANCH	136.82		ETCHEMENDY, CAROLINE, ESTATE OF	8.20	
QUITCLAIMED TO NORMANDIE PARK	-136.82		SOLD TO CARSON-HARBOR VILLAGE MOBILE	-8.20	
TOTAL		0.00	HOME PARK		
COLUMBIA BROADCASTING SYSTEM, INC			TOTAL		0.00
(NOW KNOWN AS CBS INC)			EVERGREEN AMERICA CORP		
CONOCOPHILLIPS COMPANY			SUCCESSOR TO POTHOS CORP	5.40	
SUCCESSOR TO TOSCO CORPORATION			TOTAL		5.40
(NOW KNOWN AS PHILLIPS 66 COMPANY)			EWING, CARMELITA ROSECRANS	91.30	
COST, EDWARD AND EMILY	7.40		SOLD TO SOUTHERN CALIFORNIA WATER CO	-91.30	
SOLD TO BEN CLUFF DAIRY	-7.40		TOTAL		0.00
TOTAL		0.00	EWING, NED ET AL		
CURTIS, OWEN W	3.80		SUCCESSOR IN PART TO ISABEL J GRANZ	6.50	
SOLD TO SOUTHERN CALIFORNIA WATER CO	-3.44		ESTATE		
TOTAL		0.36	SOLD TO R A WATT, INC	-6.50	
DEL AMO ESTATE CO	121.00		TOTAL		0.00
SOLD TO DOMINGUEZ WATER CORP	-121.00		FLESH, LESLIE R AND ANDOR PASTERNAK, ET AL		
TOTAL		0.00	SUCCESSORS TO ALFRED D AND RUTH	3.50	
DELANEY, GOLDA, ESTATE OF			SEABACK		
(FORMERLY ARTHUR J DELANEY)			SOLD TO STANLEY C LAGERLOF	-3.50	
SUCCESSOR TO BEGO CORP	4.10		TOTAL		0.00
TOTAL		4.10	FLETCHER OIL AND REFINING CO		
DENNIS, ESTHER M SHEETS			(FORMERLY FLETCHER OIL CO)	86.30	
(FORMERLY ESTHER M SHEETS)	5.50		SUCCESSOR TO FLETCHER, ROBERT G ET AL	3.70	
SOLD TO TORRANCE, CITY OF	-5.50		SOLD TO WESTERN WATER CO	-90.00	
TOTAL		0.00	TOTAL		0.00
DESSER ENTERPRISES, INC.			FLETCHER, ROBERT G, DANIEL S, AND WILFRED O		
SECOND WEST COAST BASIN JUDGMENT	0.00	0.00	SUCCESSOR TO FRED A JUNGQUIST	3.70	
SOLD TO MYRON Z. CHLAVIN AND NETTIE			SOLD TO FLETCHER OIL AND REFINING CO	-3.70	
DESSER TRUST AND JHD PROPERTIES, LLC	-0.00		TOTAL		0.00
TOTAL		0.00	FUJIMOTO, SAMUEL R		
DOMINGUEZ ESTATE CO	254.00		(FORMERLY KNOWN AS FUJIMOTO, SAMUEL R		
SOLD TO DOMINGUEZ WATER CORP	-254.00		AND RAYMOND S)		
TOTAL		0.00	SUCCESSOR IN PART TO H J AND DAISY	20.00	
DOMINGUEZ WATER CORP			EARLY		
(NOW KNOWN AS DOMINGUEZ WATER CO)			SOLD TO FUJIMOTO, SAMUEL R, STEVEN T	-20.00	
DOMINGUEZ WATER CO	9,477.80		AND JON T JOINT TENANTS		
(FORMERLY KNOWN AS DOMINGUEZ WATER CORP)			TOTAL		0.00
SUCCESSOR TO CARSON ESTATE CO	130.00		FUJIMOTO, SAMUEL R AND RAYMOND S		
SUCCESSOR TO DEL AMO ESTATE CO	121.00		(SEE FUJIMOTO, SAMUEL R)		
SUCCESSOR TO DOMINGUEZ ESTATE CO	254.00		FUJIMOTO, SAMUEL R, STEVEN T AND JON K,		
SUCCESSOR TO DON WILSON BUILDERS	32.60		JOINT TENANTS		
SUCCESSOR TO HEYDENBECK, JEANETTE R	0.70		SUCCESSOR TO FUJIMOTO, SAMUEL R	20.00	
SUCCESSOR TO NAKANO, KIKUNO, ET AL	19.30		TOTAL		20.00
SUCCESSOR IN PART TO H J EARLY	91.00		FULLILOVE, ROBERT L	1.00	
SUCCESSOR IN PART TO R A WATT, INC	61.85		SOLD TO STATE OF CALIFORNIA	-1.00	
SOLD IN PART TO WATSON LAND CO	-37.60		TOTAL		0.00
SUCCESSOR TO THORPE, GREGORY	11.80		FUTURA INDUSTRIES, INC		
DOMINGUEZ WATER CO MERGED WITH AND INTO	-		SUCCESSOR TO SPANISH AMERICAN	44.40	
CALIFORNIA WATER SERVICE CO, WATERMASTER	10,162.45		INSTITUTE		
ACCOUNT KNOWN AS CALIFORNIA WATER SERVICE			SOLD TO KAUFMAN, LEO AND SHELDON BAER	-44.40	
CO (DOMINGUEZ)			TOTAL		0.00
TOTAL		0.00	GARRETT CORP, THE		

SUCCESSOR TO SHINODA BROTHERS INC	22.50		TOTAL		104.10
TRANSFERRED TO ALLIED-SIGNAL INC (TORRANCE OFFICE)	-22.50		HOCKWALD, SIGMUND S AND LIONEL S SOLD TO HILLSIDE MEMORIAL PARK	12.50 -12.50	
TOTAL		0.00	TOTAL		0.00
GATX TANK STORAGE TERMINALS CORP			HOLLYWOOD PARK INC		
SUCCESSOR TO PHILLIPS PETROLEUM CO	167.00		(FORMERLY HOLLYWOOD TURF CLUB)		
SOLD TO KINDER MORGAN LIQUIDS	-167.00		(NOW KNOWN AS HOLLYWOOD PARK OPERATING CO)		
TERMINALS, LLC.			HOLLYWOOD PARK LAND COMPANY, LLC		
TOTAL		0.00	SUCCESSOR TO CHURCHILL DOWNS CALIFORNIA COMPANY	282.00	
GEORGIA-PACIFIC CORP			TOTAL		282.00
SUCCESSOR TO COAST FOREST PRODUCTS	3.40		HOLLYWOOD PARK OPERATING CO		
SOLD TO INGLEWOOD, CITY OF	-3.40		(FORMERLY HOLLYWOOD PARK INC)	282.00	
TOTAL		0.00	SOLD TO CHURCHILL DOWNS CALIFORNIA CO	-282.00	
GERAHUE LAND CO			TOTAL		0.00
SUCCESSOR AND ASSIGNEE FOR A S	11.90		HOLLYWOOD TURF CLUB		
JOHNSTON DRILL CO			(NOW KNOWN AS HOLLYWOOD PARK INC)		
ABANDONED WATER RIGHT	-11.90		HONEYWELL INTERNATIONAL INC		
TOTAL		0.00	MERGED WITH ALLIED-SIGNAL INC (EL		
GILLINGHAM, FLORENCE R, ET AL	2.40		SEGUNDO AND TORRANCE OFFICES) AND		
TOTAL		2.40	THE CORP NAME CHANGED TO		
GOLDEN STATE WATER COMPANY			HONEYWELL INTERNATIONAL INC	277.50	
SUCCESSOR TO SOUTHERN CALIFORNIA			SOLD IN PART TO CALIFORNIA WATER	-255.00	
WATER COMPANY (NAME CHANGE)	7,502.24		SERVICE CO (DOMINGUEZ)		
TOTAL		7,502.24	TOTAL		22.50
GONZALES, FELIPE AND GABRIELA			HONOLD, KRISTIN BRANDSMA		
(NOW KNOWN AS GONZALES, GABRIELA AND			SUCCESSOR IN PART TO ESTATE OF JOHN	11.80	11.80
MARIA R)			GRANT		
GONZALES, GABRIELA AND MARIA R			HORNSTRA, WILBUR	14.10	
(FORMERLY GONZALES, FELIPE AND GABRIELA)	34.30		SOLD TO JAKE ENGELSMAN	-14.10	
SOLD TO TORRANCE, CITY OF	-34.30		TOTAL		0.00
TOTAL		0.00	HUGHES AIRCRAFT	0.00	0.00
GRAND LAND CO			(SEE 1981 JUDGMENT ORDER)		
SUCCESSOR IN PART TO SMITH, A H, ET AL	5.70		HUNT, DONALD G		
ABANDONED WATER RIGHTS 1961-62	-5.70		SUCCESSOR TO JAMES SCANDA	1.90	
TOTAL		0.00	SOLD TO KENICHI INOSE	-1.90	
GRANT, JOHN, ESTATE OF	59.00		TOTAL		0.00
APPORTIONED IN PART TO BLACK, DANA	-11.80		INDUSTRIAL CHEMICAL DIVISION, ALLIED CHEMICAL		
APPORTIONED IN PART TO BRANDSMA,	-11.80		CORP		
MAYNARD			(FORMERLY ALLIED CHEMICAL CORP, GEN		
APPORTIONED IN PART TO HONOLD, KRISTIN	-11.80		CHEMICAL CO)		
BRANDSMA			(NOW KNOWN AS ALLIED CORP)		
APPORTIONED IN PART TO THORPE,	-11.80		INGLEWOOD, CITY OF	4,382.00	
GREGORY			SUCCESSOR TO ABELL, FRANK	1.80	
APPORTIONED IN PART TO THORPE,	-11.80		SUCCESSOR TO BOISE CASCADE BUILDING	16.92	
TERRENCE			CO		
TOTAL		0.00	SUCCESSOR TO GEORGIA-PACIFIC CORP	3.40	
GRANZ, ISABELA J	380.00		SUCCESSOR TO KAUFMAN, LEO AND	44.40	
PARTITIONED TO HEIRS:			SHELDON BAER		
ISABELA J GRANZ ESTATE	-33.80		SUCCESSOR IN PART TO GEORGE R	1.37	
JOUGHIN TORRANCE RANCH	-212.42		MURDOCK		
GEORGE R MURDOCK	-15.12		TOTAL		4,449.89
EMMA J OSBORN	-32.66		INOSE ET AL		
SUBJECT TO LONG TERM LEASE TO:	-59.60		(KEN K INOSE, KAY K INOSE, KIYOKO YOSHIYAMA,		
STANDARD OIL CO OF CALIF			KENICHI INOSE, KAYOKO K INOSE AND		
SUPERIOR OIL CO	-26.40		DAVID T NAKATANI, TRUSTEE OF THE INOSE CHILDREN		
TOTAL		0.00	TRUST U/D/T DATE 11/1/78)		
GRANZ, ISABELA J, ESTATE OF			(FORMERLY INOSE, KENICHI)		
SUCCESSOR IN PART TO ISABELA J GRANZ	33.80		SUCCESSOR TO HUNT, DONALD G	1.90	
SOLD IN PART TO RICHARD BARCLAY AND R A	-13.55		SUCCESSOR TO THAXTER, RALPH AND LOIS A	3.50	
WATT			LENOIR		
SOLD IN PART TO NED EWING, ET AL	-6.50		SOLD TO POTHOS CORP	-5.40	
SOLD IN PART TO R A WATT, INC	-13.75		TOTAL		0.00
TOTAL		0.00	INOSE, KENICHI		
HARRIS, R AND L			(NOW KNOWN AS INOSE ET AL)		
SUCCESSOR TO LAWRENCE I LISTON	0.70		JENKINS, HARRY C		
DISCLAIMED WATER RIGHT	-0.70		SUCCESSOR TO H L PERRY	1.80	
TOTAL		0.00	SOLD TO ABC NURSERY, INC	-1.80	
HARRIS TUBE, INC			TOTAL		0.00
SUCCESSOR IN PART TO B ROBINSON AND	0.70		JOHNS-MANVILLE PRODUCTS CORP		
ASSOCIATES			(SEE JOHNS-MANVILLE SALES CORP)		
TRANSFERRED TO AUTOMATION IND INC-	-0.70		JOHNS-MANVILLE SALES CORP		
HARRIS TUBE			(FORMERLY: JOHNS-MANVILLE PRODUCTS CORP		
TOTAL		0.00	MANVILLE SERVICE CORP)		
HAWTHORNE, CITY OF	1,882.00		(NOW KNOWN AS MANVILLE SALES CORP)		
TOTAL		1,882.00	TOTAL		0.00
HENDERSON, BEATRICE M	1.30		JOHNSTON, A S, DRILLING CO	11.90	
ABANDONED WATER RIGHT	-1.30		ASSIGNED TO GERAHUE LAND CO	-11.90	
TOTAL		0.00	TOTAL		0.00
HEYDENBECK, JEANETTE R			JONES, ANNA MAE	50.20	
(FORMERLY JEANETTE R REIFSNYDER)	0.70		SOLD TO CITY OF TORRANCE	-50.20	
SOLD TO DOMINGUEZ WATER CORP	-0.70		TOTAL		0.00
TOTAL		0.00	JOUGHIN TORRANCE RANCH		
HILLSIDE MEMORIAL PARK	16.70		SUCCESSOR IN PART TO ISABELA J GRANZ	212.42	
SUCCESSOR TO SANTA FE LAND	39.50		SOLD IN PART TO BARCLAY HOLLANDER	-3.33	
IMPROVEMENT CO			CURCI INC		
SUCCESSOR TO SIGMUND S AND LIONEL S	12.50		SOLD IN PART TO BOISE CASCADE BUILDING	-16.92	
HOCKWALD			CO		
SUCCESSOR TO THORPE, TERRENCE	11.80		SOLD IN PART TO COLLISTER, CAMERON	-136.82	
SUCCESSOR TO BRANDSMA, MAYNARD	11.80		SOLD IN PART TO R A WATT, INC	-55.35	
SUCCESSOR TO AQUA CAPITAL	11.80		TOTAL		0.00
MANAGEMENT L.P.					



West Coast Basin Watermaster

JUNGQUIST, FRED A (FORMERLY KATHERINE P WOODMAN) SOLD TO ROBERT G FLETCHER ET AL	3.70 -3.70		(NOW KNOWN AS LOMITA, CITY OF WATER SYSTEM WWD 13)		
TOTAL		0.00	LOS ANGELES COUNTY WATERWORKS DISTRICT NO 22	551.00	
KAHLERT, ET AL			SOLD TO SOUTHERN CALIF WATER CO	-551.00	0.00
AND SUCCESSOR IN PART TO KELLY PIPE CO	18.90		TOTAL		
SOLD TO SPARKLETTS DRINKING WATER CORP	-18.90		LOS ANGELES COUNTY WESTERN AVE GOLF COURSE (FORMERLY BOARD OF RETIREMENT OF THE LOS ANGELES COUNTY EMPLOYEES RETIREMENT SYSTEM)		
TOTAL		0.00	(NOW KNOWN AS LOS ANGELES CHESTER L WASH GOLF)		
KAUFMAN, LEO AND SHELDON BAER SUCCESSOR TO FUTURA INDUSTRIES INC	44.40		LOYOLA MARYMOUNT UNIVERSITY (FORMERLY LOYOLA UNIVERSITY OF LOS ANGELES)	48.10	
SOLD TO CITY OF INGLEWOOD	-44.40		TOTAL		48.10
TOTAL		0.00	MANHATTAN BEACH, CITY OF	1,131.20	
KELLY PIPE CO	49.00		TOTAL		1,131.20
SOLD IN PART TO STATE OF CALIFORNIA	-16.30		MANVILLE SALES CORP	881.00	
SOLD IN PART TO KAHLERT, ET AL	-18.90		(FORMERLY: JOHNS-MANVILLE SALES CORP JOHNS-MANVILLE PRODUCTS CORP MANVILLE SERVICE)		
SOLD IN PART TO SPARKLETTS DRINKING WATER CORP	-13.80		SOLD TO ATLANTIC RICHFIELD CO	-881.00	
TOTAL		0.00	TOTAL		0.00
KINDER MORGAN LIQUIDS TERMINALS, LLC. SUCCESSOR TO GATX TANK STORAGE TERMINALS CORP.	167.00		MANVILLE SERVICE CORP (SEE JOHNS-MANVILLE SALES CORP)		
TOTAL		167.00	MARTIN BROTHERS BOX CO, INC	3.40	
KITA, ISAMU, KASUO, AND YOSHIKI R SOLD TO DON WILSON BUILDERS	32.60 -32.60		SOLD TO SOUTHWEST STEEL ROLLING MILLS	-3.40	
TOTAL		0.00	TOTAL		0.00
KURTZ, GLADYS SOLD TO SPARKLETTS DRINKING WATER CORP	3.50 -3.50		MAYFLOWER NURSERIES (HERBERT SAKAYE FUKUWAI, DBA)	0.00	
TOTAL		0.00	TOTAL		0.00
LAGERLOF, STANLEY C SUCCESSOR TO LESLIE R FLESCH AND ANDOR PASTERNAK, ET AL	3.50		MCCANDLESS, JAMES	6.70	
SOLD TO SHELL OIL CO	-3.50		SOLD TO SPARKLETTS DRINKING WATER CORP	-6.70	
TOTAL		0.00	TOTAL		0.00
LAWLER, JAMES K SOLD TO B ROBINSON AND ASSOC	3.10 -3.10		MCDONNELL DOUGLAS CORP (FORMERLY DOUGLAS AIRCRAFT, CO INC)		
TOTAL		0.00	LONG TERM LEASE FROM UNITED STATES NAVY DEPARTMENT	1.70	
LERMENS, EVELYN (FORMERLY LERMENS, ALFRED) SOLD TO COASTLINE CHURCH OF CHRIST	0.70 -0.70		TOTAL		1.70
TOTAL		0.00	MOBIL OIL CORP (FORMERLY SOCONY MOBIL OIL CO)	2,570.00	
LEUZINGER, EMMA L	1.40		SUCCESSOR TO SUPERIOR OIL CO	26.40	
TOTAL		1.40	TOTAL		2,596.40
LISTON, LAWRENCE SOLD TO R AND L HARRIS	0.70 -0.70		MONETA MUTUAL WATER CO	916.00	
TOTAL		0.00	SOLD TO CITY OF TORRANCE	-916.00	
LITTLE, WILLIAM SUCCESSOR TO ROCKWELL, MICHAEL SOLD TO WATT INDUSTRIAL PROPERTIES	0.10 -0.10		TOTAL		0.00
TOTAL		0.00	MONIZ, JOE JR	2.20	
LOMITA, CITY OF WATER SYSTEM (WWD 13) (FORMERLY LOS ANGELES COUNTY WATERWORKS DISTRICT NO 13)	1,352.00		SOLD TO STATE OF CALIFORNIA	-2.20	
TOTAL		1,352.00	TOTAL		0.00
LONG BEACH, CITY OF	0.70		MONTROSE CHEMICAL CORPORATION OF CALIFORNIA		
TOTAL		0.70	SUCCESSOR TO CARSON-HARBOR VILLAGE MOBILE HOME PARK (9-28-2011)	1.20	
LOPES, FRANK	3.70		TOTAL		1.20
TOTAL		3.70	MORAN, RONALD E		
LOS ANGELES, CITY OF	1,503.00		SUCCESSOR IN PART TO COLUMBIA BROADCASTING SYSTEM, INC	9.00	
TOTAL		1,503.00	SOLD TO CITY OF TORRANCE	-9.00	
LOS ANGELES COUNTY-ALONDRA PARK SUCCESSOR TO LOS ANGELES COUNTY FLOOD CONTROL DIST	28.70 39.00		TOTAL		0.00
MERGED WITH LOS ANGELES COUNTY CHESTER L. WASHINGTON GOLF COURSE UNDER NEW NAME "LOS ANGELES COUNTY RECREATION FACILITIES"	-67.70		MORI, ROY H AND KENJI		
TOTAL		0.00	SECOND WEST COAST BASIN JUDGMENT	5.60	
LOS ANGELES COUNTY CHESTER L WASHINGTON GOLF COURSE	296.00		SOLD TO NOZAKI, SUMIKICHI	-2.00	
(FORMERLY LOS ANGELES COUNTY WESTERN AVENUE GOLF COURSE)			TOTAL		3.60
MERGED WITH LOS ANGELES COUNTY ALONDRA PARK UNDER NEW NAME "LOS ANGELES COUNTY RECREATION FACILITIES"	-296.00		MURDOCK, GEORGE R		
TOTAL		0.00	SUCCESSOR IN PART TO ISABELA J GRANZ	15.12	
LOS ANGELES COUNTY FLOOD CONTROL DISTRICT SUCCESSOR IN PART TO A H SMITH, ET AL	37.60 1.40		SOLD IN PART TO R BARCLAY AND R A WATT	-13.75	
SOLD TO LOS ANGELES COUNTY - ALONDRA PARK	-39.00		SOLD IN PART TO CITY OF INGLEWOOD	-1.37	
TOTAL		0.00	TOTAL		0.00
LOS ANGELES COUNTY RECREATION FACILITIES MERGER OF LOS ANGELES COUNTY ALONDRA PARK, AND LOS ANGELES COUNTY CHESTER L. WASHINGTON GOLF COURSE	67.70		MYRON Z. CHLAVIN AND NETTIE DESSER TRUST AND JHD PROPERTIES, LLC		
TOTAL		363.70	SUCCESSOR TO DESSER ENTERPRISES, INC.	0.00	
LOS ANGELES COUNTY SANITATION DIST NO 2	102.00		TOTAL		0.00
TOTAL		102.00	NAKANO, KIKUNO, ET AL	19.30	
LOS ANGELES COUNTY WATERWORKS DISTRICT NO 13			SOLD TO DOMINGUEZ WATER CORP	-19.30	
			TOTAL		0.00
			NAVARRO, T C	53.90	
			SOLD TO HILARIO S AND EMMA ALWAG	-53.90	
			TOTAL		0.00
			NORAIR, A DIVISION OF NORTHPROP CORP (FORMERLY KNOWN AS NORTHPROP AIRCRAFT, INC) (NOW KNOWN AS NORTHPROP CORP)		
			NORMANDIE PARK	136.82	
			SUCCESSOR TO COLLISTER, CAMERON	-136.82	
			SOLD TO CITY OF TORRANCE		
			TOTAL		0.00
			NORTHPROP CORP (FORMERLY KNOWN AS NORAIR, A DIV OF NORTHPROP CORP)	38.15	
			TOTAL		38.15
			NOZAKI, SUMIKICHI		



SUCCESSOR IN PART TO MORI, ROY H AND KENJI	2.00		RYAN AERONAUTICAL CO	20.20	
SUCCESSOR IN PART TO UNITED CALIFORNIA BANK	5.00		SOLD TO SOUTHERN CALIFORNIA WATER CO TOTAL	-20.20	0.00
TOTAL	7.00		SANTA FE LAND IMPROVEMENT CO	39.50	
OSBORN, EMMA J			SOLD TO HILLSIDE MEMORIAL PARK TOTAL	-39.50	0.00
SUCCESSOR IN PART TO ISABELA J GRANZ	32.66		SCANDA, JAMES AND GEORGE NASSIN	1.90	
SOLD TO R BARCLAY AND R A WATT	-32.66		SOLD TO DONALD G HUNT	-1.90	
TOTAL	0.00		TOTAL	0.00	0.00
OTANI, CHISATO	0.00		SCHLAEGEL, KEITH W AND OPAL B	13.60	
TOTAL	0.00	0.00	SOLD TO SIDNEY R AND CHARLOTTE W TITLE	-13.60	
PACIFIC CREST CEMETERY CO	17.70		TOTAL	0.00	0.00
SUCCESSOR TO H S SCOTT	9.50		SCOTT, H S		
SUCCESSOR TO WADA, KAORU AND SATORU	12.20		SUCCESSOR TO W F BURKE AND LOIS PRICE	9.50	
TOTAL	39.40		QUITCLAIMED TO PACIFIC CREST CEMETERY CO	-9.50	
PALOS VERDES BEGONIA FARM			TOTAL	0.00	0.00
SUCCESSOR TO GUS A BAUMAN	0.00		SEABACK, ALFRED D AND RUTH	3.50	
TOTAL	0.00	0.00	SOLD TO LESLIE R FLESH AND OR	-3.50	
PALOS VERDES WATER CO	999.00		PASTERNAK, ET AL		
SOLD TO CALIFORNIA WATER SERVICE CO	-999.00		TOTAL	0.00	0.00
TOTAL	0.00		SEPULVEDA, LOUIS M	0.70	
PARK WATER CO	160.00		ACQUIRED BY RUFFNER CORP	-0.70	
SOLD TO SOUTHERN CALIFORNIA WATER	-160.00		TOTAL	0.00	0.00
TOTAL	0.00		SHEETS, ESTHER M		
PARKE, ZORAIDA	1.80		(FORMERLY CLYDE L SHEETS)		
SOLD TO H L PERRY	-1.80		(SEE DENNIS, ESTHER M SHEETS)		
TOTAL	0.00	0.00	SHELL OIL CO	4,516.00	
PASCHKE, WILLIAM JOSEPH	0.02		SUCCESSOR TO LAGERLOF, STANLEY C	3.50	
ABANDONED WATER RIGHT	-0.02		SOLD IN PART TO UNION OIL CO OF CAL	-1,974.00	
TOTAL	0.00	0.00	SOLD IN PART TO UNION OIL CO OF CAL	-1,526.00	
PERRY, H L			TOTAL	1,019.50	
SUCCESSOR TO ZORAIDA PARKE	1.80		SHELL OIL PRODUCTS US		
SOLD TO HARRY C JENKINS	-1.80		SUCCESSOR TO EQUILON ENTERPRISES, LLC	3,432.00	
TOTAL	0.00	0.00	SOLD TO TESORO REFINING AND MARKETING COMPANY	-3,432.00	
PHILLIPS 66 COMPANY	6,170.00		TOTAL	0.00	0.00
(FORMERLY CONOCOPHILLIPS COMPANY)			SHINODA BROTHERS, INC		
TOTAL	6,170.00	6,170.00	SECOND WEST COAST BASIN JUDGMENT	22.50	
PHILLIPS PETROLEUM CO			SOLD TO GARRETT CORP, THE	-22.50	
(FORMERLY TIDEWATER OIL CO)	167.00		TOTAL	0.00	0.00
SOLD TO GATX TANK STORAGE TERM CORP	-167.00		SMITH, A H, (SAM SURBER AND FRED A SMITH)	9.70	
TOTAL	0.00	0.00	SOLD IN PART TO STATE OF CALIFORNIA	-2.60	
POTHOS CORP			SOLD IN PART TO GRAND LAND CO	-5.70	
SUCCESSOR TO INOSE ET AL	5.40		SOLD IN PART TO L A CO FLOOD CONTROL	-1.40	
SOLD TO EVERGREEN AMERICA CORP	-5.40		DISTRICT		
TOTAL	0.00	0.00	TOTAL	0.00	0.00
REHOR, JOSEPHINE P	2.20		SOCONY MOBIL OIL CO		
TOTAL	2.20	2.20	(SEE MOBIL OIL CO)		
REIFSNYDER, JEANETTE R			SOLVAY USA INC.		
(NOW KNOWN AS JEANNETTE R HEYDENBECK)			(NOW KNOWN AS ECO SERVICES OPERATIONS LLC)		
RHODIA, INC			SOUTHERN CALIFORNIA EDISON CO	10.40	
(NOW KNOWN AS SOLVAY USA INC.)			SUCCESSOR TO ASSOCIATED SOUTHERN	46.70	
SUCCESSOR TO RHONE-POULENC INC			INVESTMENT CO		
RHONE-POULENE BASIC CHEMICALS CO			TOTAL	57.10	
SUCCESSOR TO STAUFFER CHEMICAL CO	521.00		SOUTHERN CALIFORNIA WATER CO	6,265.30	
SOLD TO RHONE-POULENE INC	-521.00		SUCCESSOR TO EWING, CARMELITA	91.30	
TOTAL	0.00	0.00	ROSECRANS		
RHONE-POULENC INC			SUCCESSOR TO LOS ANGELES COUNTY	551.00	
SUCCESSOR TO RHONE-POULENC, BASIC	521.00		WATERWORKS DIST NO 22		
CHEMICALS CO			SUCCESSOR TO PARK WATER CO	160.00	
SOLD TO RHODIA, INC	-521.00		SUCCESSOR TO RYAN AERONAUTICAL CO	20.20	
TOTAL	0.00	0.00	SUCCESSOR TO SOUTHERN PACIFIC CO	166.00	
RICHFIELD OIL CORP			SUCCESSOR IN PART TO OWEN W CURTIS	3.44	
(NOW KNOWN AS ATLANTIC RICHFIELD CO)			SUCCESSOR IN PART TO B ROBINSON AND	2.40	
ROBINSON, B, AND ASSOCIATES			ASSOCIATES		
SUCCESSOR TO JAMES K LAWLER	3.10		SUCCESSOR TO WESTERN WATER SERVICE	242.60	
SOLD IN PART TO HARRIS TUBE, INC	-0.70		COMPANY		
SOLD IN PART TO SOUTHERN CALIFORNIA	-2.40		NAME CHANGE TO GOLDEN STATE WATER	-7,502.24	
WATER CO			COMPANY		
TOTAL	0.00	0.00	TOTAL	0.00	0.00
ROCKWELL, MICHAEL L			SOUTHERN PACIFIC CO	166.00	
SUCCESSOR TO BANK OF AMERICA NATIONAL	0.10		SOLD TO SO CALIFORNIA WATER CO	-166.00	
TRUST AND SAVINGS ASSOCIATION			TOTAL	0.00	0.00
(TRUST B 1-51)			SOUTHERN WESTERN PORTLAND CEMENT COMPANY		
SOLD TO LITTLE, WILLIAM	-0.10		SOLD TO CHANDLERS PALOS VERDES AND	15.00	
TOTAL	0.00	0.00	GRAVEL CORP		
RODRIGUEZ, FLAVIO	6.10		TOTAL	-15.00	0.00
SOLD TO STATE OF CALIFORNIA	-4.00		SOUTHWEST STEEL ROLLING MILLS		
DISCLAIMED WATER RIGHT	-2.10		SUCCESSOR TO MARTIN BROTHERS BOX CO,	3.40	
TOTAL	0.00	0.00	INC		
ROMAN CATHOLIC ARCHBISHOP OF LOS ANGELES	72.30		SOLD TO COAST FOREST PRODUCTS	-3.40	
(HOLY CROSS CEMETERY)			TOTAL	0.00	0.00
TOTAL	72.30	72.30	SPANISH AMERICAN INSTITUTE	44.40	
ROLLING HILLS COUNTRY CLUB			SOLD TO FUTURA INDUSTRIES, INC	-44.40	
SUCCESSOR TO CHANDLERS PALOS VERDES	290.00		TOTAL	0.00	0.00
SAND AND GRAVEL CORP.			SPARKLETTS DRINKING WATER CORP		
TOTAL	290.00	290.00	SUCCESSOR TO ANDERSON, REMBERT C, ET	80.50	
RUFFNER CORP			AL		
SUCCESSOR TO LOUIS M SEPULVEDA	0.70				
ABANDONED WATER RIGHT	-0.70				
TOTAL	0.00	0.00			

West Coast Basin Watermaster

SUCCESSOR TO CALIFORNIA, STATE OF	26.10		TOTAL		0.00
SUCCESSOR TO KAHLERT, ET AL	18.90		TOSCO CORP		
SUCCESSOR TO KURTZ, GLADYS	3.50		SUCCESSOR TO UNION OIL CO OF CALIF	6,170.00	
SUCCESSOR TO MCCANDLESS, JAMES	6.70		MERGED INTO CONOCOPHILLIS COMPANY	-	
SUCCESSOR TO WECHSLER, B A	3.10			6,170.00	
SUCCESSOR IN PART TO KELLY PIPE CO	13.80		TOTAL		0.00
SOLD TO WESTERN WATER CO	-152.60		TUNE, MATES, ET AL		
TOTAL		0.00	SUCCESSOR TO JOSEPHINE WATKINSON	3.10	
STANDARD OIL CO OF CALIFORNIA			SOLD TO B A WECHSLER	-3.10	
(NOW KNOWN AS CHEVRON U S A, INC)			TOTAL		0.00
STAUFFER CHEMICAL CO	521.00		UNION NURSERY, INC		
SOLD TO RHONE-POULENC BASIC CHEMICALS	-521.00		SECOND WEST COAST BASIN JUDGMENT	4.70	
CO			SOLD TO CENTURY BUILDERS	-4.70	
TOTAL		0.00	TOTAL		0.00
SUNRISE GROWERS, INC			UNION OIL CO OF CALIFORNIA	2,670.00	
SUCCESSOR TO AMERICAN PLANT GROWERS	10.00		SUCCESSOR IN PART TO SHELL OIL CO	1,974.00	
INC			SUCCESSOR IN PART TO SHELL OIL CO	1,526.00	
SOLD TO AMERICAN PLANT GROWERS, INC	-10.00		SOLD TO TOSCO CORP	-6,170.00	
TOTAL		0.00	TOTAL		0.00
SUPERIOR OIL CO			UNITED CALIFORNIA BANK		
SUBJECT TO LONG TERM LEASE FROM	26.40		SUCCESSOR TO BALLMAN, ROSEMARY N	7.00	
ISABELA J GRANZ			SOLD TO A B C NURSERY, INC	-2.00	
SOLD TO MOBIL OIL CORP	-26.40		SOLD TO NOZAKI, SUMIKICHI	-5.00	
TOTAL		0.00	TOTAL		0.00
SWICK, PEGGY	5.50		UNITED STATES NAVY DEPARTMENT	1.70	
SOLD TO HILARIO AND EMMA ALWAG	-5.50		LONG TERM LEASE TO MCDONNELL DOUGLAS	-1.70	
TOTAL		0.00	CORP PER JUDGEMENT		
TESORO REFINING AND MARKETING COMPANY			TOTAL		0.00
SUCCESSOR TO SHELL OIL PRODUCTS US			UNITED STATES STEEL CORP	1,791.00	
(NOW KNOWN AS TESORO REFINING &			SOLD TO TORRANCE, CITY OF	-1,791.00	
MARKETING COMPANY LLC)			TOTAL		0.00
TESORO REFINING & MARKETING COMPANY LLC			VERBURG, WILLIAM AND CLARA B	6.70	
(FORMERLY TESORO REFINING AND			SOLD TO ABC NURSERY, INC	-6.70	
MARKETING COMPANY)	3,432.00		TOTAL		0.00
SUCCESSOR TO ATLANTIC RICHFIELD			VUKELICH MIKE, JR.		
COMPANY (6-13-2013)	5,309.00	8,741.00	SUCCESSOR TO AMERICAN PLANT	10.00	
			GROWERS, INC.		
TEXACO, INC			TOTAL		10.00
(NOW KNOWN AS TEXACO REFINING AND			WADA, KAORU AND SATORU	12.20	
MARKETING, INC)			SOLD TO PACIFIC CREST CEMETERY CO	-12.20	
TEXACO REFINING AND MARKETING, INC	3,432.00		TOTAL		0.00
(FORMERLY: TEXACO, INC)			WATKINSON, JOSEPHINE	3.10	
SOLD TO EQUILON ENTERPRISES, LLC	-3,432.00		SOLD TO MATES TUNE, ET AL	-3.10	
TOTAL		0.00	TOTAL		0.00
THAXTER, RALPH AND LOIS A LENOIR	3.50		WATSON LAND CO	42.60	
SOLD TO KENICHI INOSE	-3.50		SUCCESSOR IN PART TO DOMINGUEZ WATER	37.60	
TOTAL		0.00	CORP		
THORPE, GREGORY			TOTAL		80.20
SUCCESSOR IN PART TO ESTATE OF JOHN	11.80		WATT INDUSTRIAL PROPERTIES		
GRANT			SUCCESSOR TO WILLIAM LITTLE	0.10	
SOLD TO DOMINGUEZ WATER CORP	-11.80		TOTAL		0.10
TOTAL		0.00	WATT, R A, INC		
THORPE, TERENCE			SUCCESSOR TO NED EWING, ET AL	6.50	
SUCCESSOR IN PART TO ESTATE OF JOHN	11.80		SUCCESSOR IN PART TO ISABELA J GRANZ	13.75	
GRANT			ESTATE		
SOLD TO HILLSIDE MEMORIAL PARK	-11.80		SUCCESSOR IN PART TO JOUGHIN TORRANCE	55.35	
TOTAL		0.00	RANCH		
TIDEWATER OIL CO			SOLD TO DOMINGUEZ WATER CORP	-61.85	
(SEE PHILLIPS PETROLEUM CO)			SOLD TO CITY OF TORRANCE	-13.75	
TITLE, SIDNEY R AND CHARLOTTE W			TOTAL		0.00
SUCCESSOR TO KEITH W AND OPAL B	13.60		WECHSLER, B A		
SCHLAEGE L			SUCCESSOR TO MATES TUNE, ET AL	3.10	
SOLD TO ABC NURSERY, INC	-13.60		SOLD TO SPARKLETTS DRINKING WATER	-3.10	
TOTAL		0.00	CORP		
TORRANCE, CITY OF	2,519.00		TOTAL		0.00
SUCCESSOR TO BARCLAY HOLLANDER CORP	3.33		WESTERN WATER CO		
SUCCESSOR TO BARCLAY, RICHARD AND			SUCCESSOR TO FLETCHER OIL AND REFINING	90.00	
WATT, R A	59.96		CO		
SUCCESSOR TO BELVIDERE MUTUAL WATER	33.40		SUCCESSOR TO SPARKLETTS DRINKING	152.60	
CO			WATER CORP		
SUCCESSOR TO DENNIS, ESTHER M SHEETS	5.50		SOLD TO WESTERN WATER SERVICES CO	-242.60	
SUCCESSOR TO ALCAST FOUNDRY ET AL	7.20		TOTAL		0.00
SUCCESSOR TO GONZALES, GABRIELA AND	34.30		WESTERN WATER SERVICES CO *		
MARIA R			SUCCESSOR TO WESTERN WATER CO.	242.60	
SUCCESSOR TO JONES, ANNA MAE	50.20		SOLD TO SOUTHERN CALIFORNIA WATER	-242.60	
SUCCESSOR TO MONETA WATER CO	916.00		COMPANY		0.00
SUCCESSOR TO MORAN, RONALD E	9.00		WESTON INVESTMENT CO	184.00	
SUCCESSOR TO NORMANDIE PARK	136.82		SOLD TO TORRANCE SAND AND GRAVEL	-184.00	
SUCCESSOR TO TORRANCE UNIFIED SCHOOL	59.40		CORP		
DISTRICT			TOTAL		0.00
SUCCESSOR TO UNITED STATES STEEL CORP	1,791.00		WISEBURN SCHOOL DISTRICT	8.20	
SUCCESSOR TO WATT, R A, INC	13.75		TOTAL		8.20
TOTAL		5,638.86	WOODMAN, KATHERINE P		
TORRANCE SAND AND GRAVEL CORP			(SEE FRED A JUNGQUIST)		
SUCCESSOR TO WESTON INVESTMENT CO	184.00		ZEIGLER, MAXWELL T	0.00	
SOLD TO CHANDLERS PALOS VERDES	-184.00		TOTAL		0.00
SAND AND GRAVEL CORP					
TOTAL		0.00	GRAND TOTAL	64,468.25	64,468.25
TORRANCE UNIFIED SCHOOL DISTRICT					
SUCCESSOR TO HILARIO S AND EMMA ALWAG	59.40				
SOLD TO CITY OF TORRANCE	-59.40				

\* WESTERN WTR. SERV.CO. - PARTY WITH ZERO AR FOR THE DURATION OF LONG TERM LEASE AGREEMENT WITH CHEVRON (ENDED JUNE 30, 2013)

# Appendix C

Parties to the Judgment

June 2018

**ABC Nursery, Inc**  
Aqua Capital Management LP  
**Asahi Fancy Koi, Inc.**  
Atlantic Richfield Company  
**Automation Industries, Inc.**  
**CBS, Inc.**  
**California Water Service Company**  
**California Water Service Company (Dominguez)**  
**California Water Service Company (Hawthorne Lease)**  
**Carson-Harbor Village Mobile Home Park**  
**Carson-Madrona Company**  
**Century Builders**  
**Chandler's Palos Verdes Sand & Gravel Company**  
**Chevron USA, Inc**  
**Coastline Church of Christ**  
**Curtis, Owen W.**  
**Delaney, Golda, Estate of**  
**El Segundo, City of**  
**Engelsma, Susan Trust**  
**Evergreen America Corp.**  
**Fujimoto, S.R., S.T. & J.K.**  
**Gillingham, Florence R., et al.**  
**Golden State Water Company**  
**Hawthorne, City of**  
**Hillside Memorial Park**  
**Hollywood Park Land Company, LLC**  
**Honeywell International, Inc.**  
**Honold, Kristin Brandsma**  
Hughes Aircraft Company  
**Inglewood, City of**  
**Inglewood Park Cemetery**  
**Kinder Morgan Liquids Terminals, LLC**  
**Leuzinger, Emma L. Estate of**  
**Lomita, City of Water System**  
**Long Beach, City of**  
**Lopes, Frank**  
**Los Angeles, City of**  
**Los Angeles County Recreation Facilities**  
**Los Angeles County Sanitation District 2**  
**Loyola Marymount University**  
**Manhattan Beach, City of**  
Mayflower Nurseries  
**McDonnell Douglas Corporation**  
**Torrance Refining Co.**  
**Montrose Chemical Corporation**  
**Mori, Roy H. and Kenji**  
Myron Z. Chlavin & Nettie Desser Trust & JHD Pr.  
**Northrop Corporation**  
**Nozaki, Sumikichi**  
**Ocean Industries, Inc.**  
**Pacific Crest Cemetery Company**  
**Palos Verdes Begonia Farm**  
**Phillips 66 Company**  
**Rehor, Josephine P.**  
**Eco Services Operation, LLC**  
**Rolling Hills Country Club**  
Rolling Hills Vista  
**Roman Catholic Archbishop of Los Angeles**  
**Shell Oil Company**  
**Southern California Edison Company**  
**Tesoro Refining and Marketing Company**  
**Torrance, City of**  
**Vukelich, Mike Jr.**  
**Watson Land Company**  
Western Water Service Company  
**Wiseburn School District**  
Zeigler, Maxwell T.

Parties that are bold signify water rights holders.