

WATERMASTER SERVICE IN THE WEST COAST BASIN - LOS ANGELES COUNTY

July 1, 2021 - June 30, 2022

December 2022



WEST COAST BASIN WATERMASTER

WEST COAST BASIN WATER RIGHTS PANEL

Prepared by the Administrative Body



This report is available at www.wrd.org

Printed copies are available.

Send requests to:

watermaster@wrđ.org

WATERMASTER SERVICE

IN THE WEST COAST BASIN
LOS ANGELES COUNTY

July 1, 2021 - June 30, 2022

December 2022

**WEST COAST BASIN
WATER RIGHTS PANEL**



Prepared by the
Water Replenishment District of Southern California (WRD)
West Coast Basin Administrative Body
for the
West Coast Basin Watermaster Water Rights Panel
Adopted on
December 6, 2022

Contents

Summary of Pertinent Data	1
Introduction	2
Executive Summary	2
Background	2
Water Use	4
A. Adjudicated Extractions by Parties	4
B. Groundwater Storage Activities by Parties	4
C. Total Extraction Rights and Overextractions	5
D. Extractions of Contaminated Groundwater	5
E. Extractions by Non-Parties	5
F. Extraction Exemptions	5
G. Adjudicated Rights Transfers	6
H. Exchange Pool	7
I. Extraction Wells	7
J. Meter Testing Program	7
Water Supply	9
A. Precipitation	9
B. Groundwater Recharge	9
C. In-Lieu Replenishment	10
D. Imported Water	10
E. Recycled Water	10
F. Total Water Use	10
G. Exported Water	10
H. Increased Extraction in the Central Basin for Certain Purveyors Serving Overlying Communities	10
I. Seawater Intrusion Barrier Projects	11
J. Groundwater Levels	11
Watermaster Costs and Budget	12

Tables

Table 1 - Water Rights Accounting (acre-feet) _____	14
Table 2 - Storage Accounting _____	16
Table 3 - Water Put Into Storage _____	17
Table 4 - Water Extracted From Storage _____	17
Table 5 - Storage Transfers _____	17
Table 6 - Historical Storage Summary _____	18
Table 7 - Over-extractions _____	18
Table 8 - Non-Consumptive Water Use Permits _____	19
Table 9 - Extractions by Non-Parties _____	19
Table 10 - Leases (acre-feet) _____	20
Table 11 - Permanent Transfers (acre-feet) _____	21
Table 12 - Exchange Pool _____	22
Table 13 - Extraction Wells Completed _____	22
Table 14 - Extraction Wells Destroyed _____	22
Table 15 - Replenishment Operations _____	22
Table 16 - WRD In-Lieu Recharge _____	23
Table 17 - Imported Water Use _____	23
Table 18 - Recycled Water Use _____	24
Table 19 - Seawater Intrusion Barrier Project Operations _____	24
Table 20 - Apportionment of Budget Among Rights Holders _____	25

Figures

Figure 1 - West Coast Basin (showing groundwater production) _____	27
Figure 2 - Monthly Water Production (excludes non-consumptive use) _____	28
Figure 3 - West Coast Basin (showing key wells and facilities) _____	29
Figure 4 - Monthly Mean Precipitation _____	30
Figure 5 - Total Water Use _____	31
Figure 6 - Water Level Hydrographs _____	32

Appendices

Appendix A - Groudwater Extractions July 2021-June 2022 _____	33
Appendix B - Succession of Adjudicated Rights as of June 2022 _____	40
Appendix C - Parties to the Amended Judgment as of June 2022 _____	47
Appendix D - Erratum of West Coast Basin Watermaster Annual Report for July 1, 2020-June 30, 2021 _____	49

Governance

2021- 2022 AY

West Coast Basin Administrative Body

Water Replenishment District

President

John D. S. Allen
Division 3

Vice-President

Sergio Calderon
Division 4

Secretary

Vera Robles DeWitt
Division 5

Treasurer

Rob Katherman
Division 2

Director

Joy Langford
Division 1

General Manager

Stephan Tucker

Storage Panel

Water Replenishment District
Board of Directors

West Coast Basin Water Rights Panel

West Coast Basin Water Rights Panel

Chair

Lourdes Vargas
City of Manhattan Beach

Vice-Chair

Katherine Nutting
Golden State Water Company

Treasurer

Chuck Schaich
City of Torrance

Charles Campbell
Torrance Refining Company

Ron Sorensen
California Water Service Company

Administrative Body Staff

Esther Valle Rojas

Aimee Zhao

Andrew Thomas

Greg Osti

Jackie Ramirez

Tiffani Fong

Summary of Pertinent Data

Item	Administrative Year 2020 - 2021	Administrative Year 2021- 2022
Parties	70	71
Rights Holders	56	56
Active pumpers	36	20
Active Non-Parties	0	0
Adjudicated Rights (acre-feet)	64,468.25	64,468.25
Water put into Storage (acre-feet)	1,127.70	1,127.70
Mean Precipitation (inches)	4.72	9.43
Injection at barrier projects (acre-feet)	22,110	19,146
Exported water use by Parties (acre-feet)	0	0
Watermaster Budget, total ¹	\$172,896	\$108,428
Adjudicated Rights Extractions (acre-feet) ²	31,890	30,581
Recycled water use by Parties (acre-feet)	23,458	17,107
Imported water use by Parties (acre-feet)	137,070	140,469
Total water use by Parties (acre-feet)	192,418	188,157

¹ For the 2021- 2022 AY, Water Rights Panel Assessment: waived; Administrative Body Budget: \$108,428

² Excludes extractions by Parties with non-consumptive water use permits and by non-parties.

Introduction

Executive Summary

This Watermaster Annual Report, developed by the Administrative Body and adopted by the Water Rights Panel, summarizes information on groundwater extractions, storage accounts, use of imported water and recycled water, replenishment operations and the budget and finances of the West Coast Basin (Basin) Watermaster during the 2021-2022 administrative year (AY). This report complies with the provisions set forth in the West Basin Amended Judgment.

During the 2021-2022 AY, the Basin experienced a 4% decrease in groundwater production from the previous AY (production total does not include any water extracted under an exemption (See Section F)). Furthermore, zero imported water was purchased by the Water Replenishment District of Southern California (WRD) for spreading in the Montebello Forebay. The report is organized by three sections, including Water Use, Water Supply, and Watermaster Costs and Budget. In addition, the report provides various tables and figures describing the narrated information.

Background

The West Coast Basin underlies 160 square miles in the southwestern part of the coastal plain of Los Angeles County. Figure 1 shows the location and adjudicated boundaries of the Basin. The Basin is bounded on the west by the Santa Monica Bay, on the north by the Ballona Escarpment, on the east by the Newport-Inglewood Uplift, and on the south by the San Pedro Bay and the Palos Verdes Hills. Twenty incorporated cities and several unincorporated areas overlie the Basin.

An essential portion of the water needed by the residents and industries in the area overlying the Basin is pumped directly from groundwater stored in the Basins aquifers. In 1945, the intrusion of seawater caused by declining groundwater levels due to over pumping threatened the quality and quantity of the groundwater supply. In response to the seawater intrusion problem, legal action was initiated to halt the pumping overdraft and prevent further damage to the Basin. In 1955, the Superior Court of Los Angeles County (Court) appointed the Department of Water Resources (DWR) as the Watermaster to administer an Interim Agreement. Subsequently, in 1961, the Court retained the DWR as the Watermaster of the final West Coast Basin Adjudication (Judgment).

The Judgment has been amended multiple times since its inception. Noticeably, when the Judgment was amended on December 5, 2014 (Amended Judgment), for the first time, the Court allowed Parties to have direct input into how the Judgment is administered and enforced. Furthermore, the Amended Judgment confirmed the retirement of DWR as the Watermaster and established a new Watermaster structure.

The Watermaster structure includes three separate constituent bodies serving different functions: 1) an Administrative Body, 2) a Water Rights Panel, and 3) a Storage Panel. The Administrative

Body performs the Watermaster accounting and reporting functions. The WRD was appointed by the Court to fulfill this role. The Water Rights Panel enforces issues related to the pumping rights within the adjudications and is composed of five Basin adjudicated rights holders. The Storage Panel is comprised of the Water Rights Panel and the WRD Board of Directors, which together approve certain groundwater storage efforts.

The Watermaster assists the Court in the administration and enforcement of the provisions of the Judgment. Among other duties, the Watermaster monitors groundwater levels, extractions, storage, and reports significant water-related events.

Water Use

A. Adjudicated Extractions by Parties

The Judgment limits the amount of groundwater each Party with water rights may extract annually from the Basin. This limit is referred to as an “adjudicated right” or “AR”. The AR for each Party is listed in Table 1. Parties are required to report water extractions to the Administrative Body each month (or quarterly for small producers). Appendix A lists, by Party, the volume of groundwater extracted each month from each active well in the Basin. Figure 1 illustrates the variation of groundwater production by three distinct production classifications: less than 500 acre-feet per year (afy), 500 to 2,000 afy, and more than 2,000 afy, during the 2021-2022 AY. In addition, Figure 2 shows monthly water production (excluding non-consumptive use) for the 2021-2022 AY totaling 30,581 acre-feet (af), which is a 4% decrease from the previous AY.

To provide flexibility regarding groundwater extractions, the Judgment contains provisions, such as “carryover,” which allows each Party to carry over into the succeeding administrative year 100% of their unused AR plus or minus available leases with flex. However, the amount of available carryover is reduced by the amount of stored water held by the Party. Yet, such reduction will not cause the amount of carryover to be less than 20% of a Party’s total AR (including leases with flex). This type of provision is in-place to meet unforeseen water demands.

B. Groundwater Storage Activities by Parties

The Judgment permits Parties with water rights to store water in the Basin for future use. Pursuant to Section V.3.(B) of the Judgment, Parties can convert their carryover to storage upon payment of the Replenishment Assessment to WRD.

Table 2 describes storage accounting, specifically the total carryover from the previous 2020-2021 AY, storage activity for the 2021-2022 AY (transfers, water put into storage, water extracted from storage, and balances), and total carryover balance into the ensuing AY. Table 3 lists the total quantity of water put into storage during the 2021-2022 AY. The total amount of water put into storage was 1,127.70 af, which is equivalent to the prior AY. There was no water extracted from storage during the 2021-2022 AY (Table 4).

The Judgment allows the transfer of stored water between Parties. However, there were no storage transfers in the 2021-2022 AY (Table 5).

Table 6 shows a historical storage summary from 2014-2015 to 2021-2022 AY, for water put into storage, water extracted from storage, storage balance, and the available adjudicated storage capacity.

C. Total Extraction Rights and Overextractions

Parties with water rights have a total extraction right, which is the maximum amount of groundwater that can be extracted in a single AY. In the West Coast Basin, Parties with one-year carryover and/or storage rights are allowed to extract up to 120% of the sum of their AR plus or minus (+/-) leased water. For example, if a Party has an AR of 1,000 af, 400 stored water rights, and leases an additional 200 af, their maximum yearly total extraction would be calculated as follows: $(1,000 + 200) \times 1.2 = 1,440$ af. Parties without one-year carryover or storage rights can overextract 10% of their AR plus or minus (+/-) leased water or 2 af, whichever is greater. Under certain circumstances, a Party may be allowed extraction in a greater amount; however, prior approval must be obtained from the West Coast Basin Storage Panel. Any Party that exceeds their total extraction right without prior approval from Watermaster is in violation of the Judgment.

Any overextraction, which is the difference between total rights and total extraction, is deducted from that Party's subsequent administrative year's AR. Watermaster will notify a Party when they are in violation of the Judgment and/or overextracts.

During the 2021-2022 AY, Pacific Crest Cemetery had an overextraction of 8.09 af. Furthermore, they pumped beyond their total extraction right, thus are in violation of the Judgment (Table 7).

D. Extractions of Contaminated Groundwater

A Party who is a water rights holder may petition the Administrative Body (WRD) for a Non-Consumptive Water Use Permit (NCWUP) as part of a project to remediate or ameliorate groundwater contamination. If the petition is granted, the Party may extract the groundwater without it counting against its production rights, so long as the conditions of the Judgment are met. A non-Party may extract contaminated groundwater for cleanup purposes by partnering with a Party who obtains the NCWUP and then assigns it to the non-Party. Table 8 lists current NCWUPs issued by WRD and the amounts of groundwater extracted under those permits.

In the 2021-2022 AY there were 159.37 af of non-consumptive water use extractions. Appendix A reports the extractions monthly by well. Negative values listed in Appendix A represent a net re-injection of water produced.

E. Extractions by Non-Parties

In the 2021-2022 AY there were no extractions by Non-Parties reported, not including NCWUPs (Table 9).

F. Extraction Exemptions

The Court approved an amendment to the Judgment during the 2018-2019 AY, which adds Section V.15, which allows for the extraction of non-potable groundwater by agencies with no AR. However, extractions of groundwater are only permitted if all the following criteria are satisfied:

1. Only groundwater containing at least 500 milligrams/liter of chloride, as measured at the influent to any facility used to treat such water, may be extracted;

2. Extractions must be done by a public agency with statutory authority to clean contaminated groundwater;
3. Extractions of such groundwater must provide a “Regional Benefit” (as defined in Section II.27. of the Judgment) to the Basin as a whole and not just to the extracting Party;
4. All extractions pursuant to the new Paragraph V.15 are subject to the payment of WRD’s Replenishment Assessment.

In addition, all new projects seeking an extraction exemption must be reviewed (as set forth in Section V.13 of the Judgment) and approved by the Water Rights Panel and WRD in its capacity as the Administrative Body. The Water Rights Panel and WRD must ensure that the project is technically feasible and will not cause material physical harm (as defined in Section II.21 of the Judgment) to the Basin. In addition, all approved extraction exemption projects must provide annual reporting in response to the required criteria.

During the 2021-2022 AY, WRD had a total production of 4,647.61 af under the approved exemption received in 2018 for the Goldsworthy Desalter (Appendix A). In accordance with the terms of the exemption permit, the average chloride level at the influent remained above 500 milligrams/liter. There were no new extraction exemption requests submitted during the 2021-2022 AY.

G. Adjudicated Rights Transfers

Each year, ARs are transferred between Parties through leases (temporary transfers) and change of ownership (permanent transfers) transactions. Table 10 shows transfers of AR through leases, specifically the Parties involved, transaction type (leases with and without flex), amount, and recordation date. During the 2021-2022 AY there were five leases that transferred a total of 3,443.50 af (all leases with flex). Leases with flex transfer both the pumping right and associated carryover rights to the lessee for the term stated within the lease agreement.

In transferring water rights, Parties must specify (1) the type of right (i.e., adjudicated rights, one-year carryover, or drought carryover), (2) the amount of right to the nearest 0.01 af, and (3) the period of the lease, if applicable. Moreover, all leases must be made on an AY basis and must be executed by the Parties and received by the Administrative Body no later than one month and 15 days following the end of the AY in which the lease is effective.

Permanent transfers of water rights must be documented accordingly. Specifically, when land is sold, in which a water right has been developed, the Administrative Body must receive a copy of the transfer document if the water right is also transferred. Water rights do not automatically pass to the new landowner unless the transfer document specifies the transfer of water rights and the exact amount of the water right that was transferred with the land. Watermaster maintains a template for a Deed of Water Rights - Permanent Transfer transaction on its website to ensure the information provided on the transfer document is sufficient. There was one permanent transfer of AR in the 2021-2022 AY that totaled 0.10 af (Table 11).

For 2021-2022 AY, there were 71 Parties to the Judgment (individuals or entities that have a water right, privilege or obligation to the Judgment), including a new Party Lockheed Martin

Corporation; and 56 rights holders, which is the same amount from the previous year. Since water rights were permanently transferred from one party to another, there was no net change in total water rights holders. Appendix B shows the succession of ARs in the Basin. In addition, current Parties to the Judgment and Water Rights Holders are listed in Appendix C.

H. Exchange Pool

The Judgment authorizes an Exchange Pool to provide additional water rights to Parties without sufficient water. If a Party's estimated water requirement for the following fiscal year exceeds its total available water supply, that Party may purchase additional water from the Exchange Pool. There were no requests for Exchange Pool water during the 2021-2022 AY (Table 12).

I. Extraction Wells

There were 72 wells with reported extraction in 2021-2022 AY, which is two less than the previous AY. The locations of the extraction wells are shown on Figure 1 by three distinct production classifications. Furthermore, according to information provided to Watermaster, there were no extraction wells completed (Table 13) and no extraction wells destroyed in 2021-2022 AY (Table 14).

J. Meter Testing Program

Accurate measurement of groundwater extractions is essential for the successful management of groundwater in the Basin. Therefore, Watermaster requires an operative water meter to be installed at each extraction well. It is the responsibility of each Party to ensure that its meter and test facilities are installed properly and are maintained in good working condition. It is the goal of Watermaster to test the water meter at each active extraction well at least once every two years or when a Party requests a meter calibration. Watermaster tests meters by volumetric or pitot tube comparisons or other methods, as appropriate. Watermaster notifies a Party that they must repair or replace their meter when the meter registers beyond five percent accuracy. If the registration accuracy of the meter deviates by more than five percent, Watermaster may revise the well production amount.

The meter testing program is managed by the Water Rights Panel who has contracted with DWR to complete testing. During the 2021-2022 AY, the DWR visited 16 Parties and performed 30 tests. Tests showed that seven meters did not pass, which means that the meters were more than five percent fast or slow.

This page intentionally left blank

Water Supply

A. Precipitation

Precipitation over the Basin has relatively minimal direct influence on the replenishment of the groundwater in the Basin. This is a result of the low soil permeability that characterizes much of the Basin and large impermeable surfaces (i.e. pavement and buildings). However, during the years of high rainfall, increased runoff from the areas upstream can result in increased replenishment to the Basin and a decreased groundwater demand by water users, which can result in lower rates of groundwater extraction from the Basin.

During the 2021-2022 AY, the following amounts of rainfall were measured at three precipitation stations:

- 10.31 inches at Los Angeles International Airport
- 7.46 inches at Long Beach Airport
- 10.53 inches at Torrance Airport

Figure 3 shows the location of the precipitation stations and other key facilities, and Figure 4 shows the monthly precipitation average measured at the three stations. Based on the total rainfall measured, the mean precipitation in the West Coast Basin was 9.43 inches (Figure 4), which is 85% of the long-term mean of 11.11 inches. The mean precipitation for 2021-2022 AY increased by 4.71 inches compared to the previous AY.

B. Groundwater Recharge

Replenishment of the Basin occurs primarily by injection of imported and recycled water into the West Coast and Dominguez Gap Seawater intrusion barriers located along the coast, and underflow from the Central Basin to the east and Santa Monica Basin to the north. As mentioned above, minimal rainfall over the Basin infiltrates into deeper aquifers of the Basin.

Water spread in the Central Basin percolates into the aquifers and, eventually, some groundwater crosses the Newport-Inglewood Uplift to replenish the groundwater in the West Coast Basin. Although the recharge water is not directly applied to the West Coast Basin, this recharge process returns large quantities of water to the Basin by substantially increasing the natural subsurface flow from the Central Basin to the West Coast Basin. Table 15 shows the source and quantity of water replenished in the Montebello Forebay area of the Central Basin for the 2020-2021 AY and the 2021-2022 AY. Specifically, for the third consecutive year, WRD purchased zero af of imported water for spreading in the Montebello Forebay.

Water injected in the seawater intrusion barrier projects also contributes significantly to the replenishment of the Basin (see Section I, Seawater Intrusion Barrier Projects).

C. In-Lieu Replenishment

During the 1965-1966 water year, WRD, in cooperation with the MWD, began an in-lieu replenishment program, where discounted imported water was offered seasonally due to availability. WRD contracted with producers having access to supplemental imported water that could be used in lieu of extracting groundwater from the Basin to reduce overall pumping impacts. However, due to water shortages and other reasons, MWD discontinued their discounted seasonal imported water in 2011 and as a result, WRD generally suspended its in-lieu replenishment program except under special circumstances. There was no in-lieu recharge in 2021-2022 AY (Table 16).

D. Imported Water

Imported water has been the largest component of supply for the Basin since the mid-1950s. Water is imported from Northern California via the State Water Project and the Colorado River and is made available to water users by MWD through its member agencies: City of Long Beach, West Coast Basin Municipal Water District, City of Torrance, and the City of Los Angeles. Table 17 lists imported water for direct use by source, Party, and quantity. During the 2021-2022 AY, a total of 140,469 af of water was imported, which is a 3,399 af increase from the previous AY.

E. Recycled Water

Table 18 shows that 17,107 af of recycled water was used in the area overlying the Basin during the 2021-2022 AY, not including WRD replenishment water. This amount is 6,351 af or 27% less than was used in the previous AY.

F. Total Water Use

Figure 5 shows the total water use in the Basin during the 2021-2022 AY, including extracted groundwater, imported water and recycled water for direct use.

G. Exported Water

No groundwater was exported from the Basin. California Water Service Company exported purchased imported water from the Basin to portions of its service area in the Palos Verdes Hills.

H. Increased Extraction in the Central Basin for Certain Purveyors Serving Overlying Communities

Per Section IV.K of the Central Basin Third Amended Judgment, "certain purveyors" are Parties to both the Central Basin Third Amended Judgment and West Coast Basin Judgment and serve communities overlying both the Central and West Coast Basins. These purveyors include the City of Los Angeles, Golden State Water Company, and California Water Service Company and are allowed to increase their extraction in the Central Basin beyond their Allowed Pumping Allocation, which is the amount of groundwater each Party may extract annually. However, the increased extraction is counted against their AR in the West Coast Basin. Increased extractions are limited to 5,000 af per AY.

In the 2021-2022 AY, the Golden State Water Company transferred 1,190 af of their rights from the West Coast Basin into the Central Basin. The 1,190 af was deducted from their unused West Coast Basin AR. This transfer of rights is reflected in Table 1, under the “Increased Extractions” column.

I. Seawater Intrusion Barrier Projects

The Los Angeles County Department of Public Works operates two barrier projects, the West Coast Basin Barrier, and the Dominguez Gap Barrier, within the Basin. The barriers are designed to prevent seawater intrusion into the freshwater aquifers of the Basin. Table 19 shows the quantities of imported and recycled water injected into the two barrier projects. In the 2021-2022 AY, 19,146 af of water were injected into these two barrier systems, which is a 13% decrease from the previous AY. The location of the two barriers systems is illustrated in Figure 3.

J. Groundwater Levels

Figure 3 shows the location and water level elevations in the key wells located in the Basin. Figure 6 shows the water level elevations at the key wells. More detailed information regarding groundwater levels in the Basin is provided in the WRD’s annual Engineering Survey and Report and Regional Groundwater Monitoring Report. These reports are available on WRD’s website.

Watermaster Costs and Budget

To fund Watermaster activities, both the Administrative Body and the Water Rights Panel can levy an annual assessment on water rights holders under the terms of the Judgment. The Administrative Body charges a flat fee of twenty dollars (\$20) to each rights holder. In addition, the remaining amount of the Administrative Body budget is charged to rights holders based upon their proportional ownership of total AR. The Water Rights Panel assessment is charged to all water rights holders.

The total Watermaster budget for 2021-2022 was \$108,428, which was less than 2020-2021 AY due to the Water Rights Panel waiving their assessment for the year. The total of \$108,428 consists of the Administrative Body budget, which is unchanged from the previous AY. A summary of the 2021-2022 budget is provided in Table 20.

This page intentionally left blank

Table 1 – Water Rights Accounting (acre-feet)

Party	AR 2021-2022 ¹	Net Carryover ² from 2020-2021	Leases ³ with Flex w/o Flex	Storage ⁴	Increased Extractions ⁵	Total Rights ⁶	Amount Pumped ⁷	Balance ⁸	Drought ⁹	Allowable carryover into 2022-2023	Total
									Normal		
ABC Nursery	24.10	24.10	0.00	0.00		48.20	14.40	33.80	0.00	24.10	24.10
Asahi Fancy Koi	2.00	34.20	0.00	0.00		36.20	0.00	36.20	32.20	2.00	34.20
Automation Industries	0.70	4.10	0.00	0.00		4.80	0.00	4.80	3.40	0.70	4.10
Cal. Water Service Co.	4,070.00	4,050.00	0.00	0.00		8,120.00	1,258.26	6,861.74	0.00	4,070.00	4,070.00
Cal. Water Service Co. Dominguez	10,417.45	10,417.45	0.00	0.00		20,834.90	2,045.99	18,788.91	0.00	10,417.45	10,417.45
Cal. Water Service Co./Hawthorne Lease	0.00	1,882.00	1,882.00	0.00		3,764.00	79.80	3,684.20	0.00	1,882.00	1,882.00
Carson-Harbor Village Mobile Home Park	7.00	7.00	0.00	0.00		14.00	0.00	14.00	0.00	7.00	7.00
Carson-Madrona Co.	104.00	104.00	0.00	0.00		208.00	0.00	208.00	0.00	104.00	104.00
CBS, Inc.	9.50	9.50	0.00	0.00		19.00	0.00	19.00	0.00	9.50	9.50
Century Builders	4.70	4.70	0.00	0.00		9.40	0.00	9.40	0.00	4.70	4.70
Chandler Palos Verdes Sand & Gravel Company	4.20	4.20	0.00	0.00		8.40	0.00	8.40	0.00	4.20	4.20
Chevron USA	4,601.30	4,601.30	0.00	0.00		9,202.60	0.00	9,202.60	0.00	4,601.30	4,601.30
Coastline Church of Christ	0.70	4.10	0.00	0.00		4.80	0.00	4.80	3.40	0.70	4.10
Curtis, Owen W	0.36	3.08	0.00	0.00		3.44	0.00	3.44	2.72	0.36	3.08
Delaney, Golda Estate of	4.10	14.30	0.00	0.00		18.40	0.00	18.40	10.20	4.10	14.30
Eco Services Operations	521.00	514.59	0.00	0.00		1,035.59	336.33	699.26	0.00	521.00	521.00
El Segundo, City	953.00	953.00	0.00	0.00		1,906.00	0.00	1,906.00	0.00	953.00	953.00
Engelsma, Susan Trust	12.10	12.10	0.00	0.00		24.20	0.00	24.20	0.00	12.10	12.10
Evergreen America Corp.	5.40	5.40	0.00	0.00		10.80	0.00	10.80	0.00	5.40	5.40
Fujimoto, SR. & St & JK	20.00	32.28	0.00	0.00		52.28	0.00	52.28	12.28	20.00	32.28
Gillingham, Florence R	2.40	2.40	0.00	0.00		4.80	0.00	4.80	0.00	2.40	2.40
Golden State Water Co.	7,502.24	2,500.15	0.00	0.00	-1,190.00	12,112.39	4,609.92	7,502.47	3.39	4,199.08	4,202.47
Hawthorne, City	1,882.00	0.00	-1,882.00	0.00		0.00	0.00	0.00	0.00	0.00	0.00
Hillside Memorial Park	104.10	-6.72	50.00	0.00		147.38	125.37	22.01	0.00	22.01	22.01
Hollywood Park Land Co.	282.00	0.00	-282.00	0.00		0.00	0.00	0.00	0.00	0.00	0.00
Honeywell International	22.50	22.50	0.00	0.00		45.00	0.00	45.00	0.00	22.50	22.50
Honold, Kristin Brandsma	11.80	11.80	0.00	0.00		23.60	0.00	23.60	0.00	11.80	11.80
Inglewood Park Cemetery	0.00	35.00	0.00	0.00		35.00	0.00	35.00	35.00	0.00	35.00
Inglewood Park Cemetery	4,449.89	4,731.89	282.00	0.00		9,463.78	2,012.60	7,451.18	0.00	4,731.89	4,731.89
Kinder Morgan Liquids Terminals	167.00	167.00	0.00	0.00		334.00	37.22	296.78	0.00	167.00	167.00
L.A. County Department of Parks & Rec	363.70	16.85	0.00	0.00		380.55	368.63	11.92	0.00	11.92	11.92
L.A. County Sanitation Districts-JWPCP	102.00	102.00	0.00	0.00		204.00	0.00	204.00	0.00	102.00	102.00
Leuzinger, Emma L Estate of	1.40	5.90	0.00	0.00		7.30	0.00	7.30	4.50	1.40	5.90
Lockheed Martin Corporation	0.10	0.00	0.00	0.00		0.10	0.00	0.10	0.00	0.10	0.10
Lomita, City	1,352.00	1,055.00	-250.00	0.00		2,157.00	0.03	2,156.97	0.00	1,102.00	1,102.00
Long Beach, City	0.70	0.70	0.00	0.00		1.40	0.00	1.40	0.00	0.70	0.70
Lopes, Frank	3.70	13.10	0.00	0.00		16.80	0.00	16.80	9.40	3.70	13.10
Los Angeles, City	1,503.00	1,503.00	0.00	0.00		3,006.00	0.00	3,006.00	0.00	1,503.00	1,503.00
Loyola Marymount University	48.10	48.10	0.00	0.00		96.20	0.00	96.20	0.00	48.10	48.10
Manhattan Beach, City	1,131.20	226.24	0.00	0.00	2,262.40	3,619.84	270.59	3,349.25	0.00	226.24	226.24
McDonnell Douglas Corp.	1.70	1.70	0.00	0.00		3.40	0.00	3.40	0.00	1.70	1.70

Party	AR 2021-2022 ¹	Net Carryover ² from 2020-2021	Leases ³		Storage ⁴	Increased Extractions ⁵	Total Rights ⁶	Amount Pumped ⁷	Balance ⁸	Allowable carryover into 2022-2023	
			with Flex	w/o Flex						Drought ⁹	Normal
Montrose Chemical Corp.	1.20	1.20	0.00	0.00	0.00		2.40	0.00	2.40	0.00	1.20
Mori, Roy H and Kenji	3.60	12.80	0.00	0.00	0.00		16.40	0.00	16.40	9.20	3.60
Northrop Corp.	38.15	38.15	0.00	0.00	0.00		76.30	0.00	76.30	0.00	38.15
Nozaki, Sumikichi	7.00	7.00	0.00	0.00	0.00		14.00	0.00	14.00	0.00	7.00
Ocean Industries	0.00	0.10	0.00	0.00	0.00		0.10	0.00	0.10	0.00	0.00
Pacific Crest Cemetery Co. ¹¹	39.40	18.24	0.00	0.00	0.00		57.64	65.73	-8.09	0.00	-8.09
Falos Verdes Begonia Farm	0.00	7.40	0.00	0.00	0.00		7.40	0.00	7.40	7.40	0.00
Phillips 66 Co.	6,170.00	6,957.78	0.00	0.00	0.00		13,127.78	6,379.11	6,748.67	787.78	5,960.89
Rehor, Josephine P	2.20	2.20	0.00	0.00	0.00		4.40	0.00	4.40	0.00	2.20
Rolling Hills Country Club	290.00	176.00	0.00	0.00	0.00		466.00	333.00	133.00	0.00	133.00
Roman Catholic Archbishop	72.30	196.19	200.00	0.00	0.00		468.49	286.99	181.50	0.00	181.50
Shell Oil Company	1,019.50	0.00	-1,019.50	0.00	0.00		0.00	0.00	0.00	0.00	0.00
Southern California Edison Co.	57.10	63.32	0.00	0.00	0.00		120.42	23.27	97.15	6.22	57.10
Tesorro Refining & Marketing Co., LLC	8,741.00	9,760.50	1,019.50	0.00	0.00		19,521.00	9,521.96	9,999.04	0.00	9,760.50
Torrance Refining & Marketing Co.	2,596.40	2,626.83	0.00	0.00	0.00		5,223.23	986.33	4,236.90	30.43	2,596.40
Torrance, City ¹⁰	5,638.86	0.07	0.00	0.00	11,277.20		16,916.13	1,825.30	15,090.83	0.00	1,127.77
Vukelich, Mike ¹¹	10.00	-31.08	0.00	0.00	0.00		-21.08	0.00	-21.08	0.00	-21.08
Watson Land Co.	80.20	80.20	0.00	0.00	0.00		160.40	0.00	160.40	0.00	80.20
Wiseburn School Dist.	8.20	8.20	0.00	0.00	0.00		16.40	0.00	16.40	0.00	8.20
TOTAL:	64,468.25	53,043.11	0.00	0.00	16,839.60	-1,190.00	133,160.96	30,580.83	102,580.13	957.52	54,729.69

¹ AR - Adjudicated Rights

² Net Carryover is the sum of all carryover (drought and one-year) from the previous year AY 2020-21 less the amount of carryover conversion for the current AY 2021-22.

See Table 3 for carryover conversion (water put into storage) per party for AY 2021-22.

³ See Table 10 for information concerning leases. Leases with flex include carryover provisions.

⁴ Storage includes carryover conversions for AY 2021-22. See Table 2 for a summary of all Storage Accounting per party.

⁵ Increased Extraction: Section IV(K) of the Central Basin Judgment permits increased extraction rights through use of up to 5,000 af of certain Parties' West Basin Rights in the Central Basin

The aforementioned Parties include City of Los Angeles, Golden State Water Company, and California Water Service Company.

⁶ Total Rights = Adjudicated Rights + Net Carryover + Leases + Storage + Increased Extraction.

⁷ Amount pumped column does not include storage withdrawals (Table 4), which totaled zero for AY 2021-22.

⁸ Balance = Total Rights - Amount Pumped

⁹ Drought = drought carryover created in 1991.

¹⁰ Completed carryover conversions into storage. 2020-21 net carryover reduced by carryover conversion into storage for 2021-22:

Torrance, City of: 1,127.70 AF

¹¹ Negative One-Year Carryover will be deducted from the subsequent year's AR.

Table 2 – Storage Accounting

Party	Carryover from 2020-2021		2021-2022 Storage Activity								
	CSP ²		Transfers		Water Extracted		Water put into Storage		Balance		
	ISA ¹		ISA	CSP	ISA	CSP	ISA	CSP	ISA	CSP	Total
Golden State Water Co.	3,000.90	299.10	-	-	-	-	-	-	3,000.90	299.10	3,300.00
Manhattan Beach, City	452.48	1,809.92	-	-	-	-	-	-	452.48	1,809.92	2,262.40
Torrance, City	2,255.54	7,893.96	-	-	-	-	-	1,127.70	2,255.54	9,021.66	11,277.20
Total	5,708.92	10,002.98	-	-	-	-	-	1,127.70	5,708.92	11,130.68	16,839.60

¹ Individual Storage Account.

² Community Storage Pool.

Table 3 – Water Put Into Storage

Party	Quantity (acre-feet)	ISA ¹	CSP ²	Storage Method ³	Date
Torrance, City of	1,127.70	-	1,127.70	CC	8/1/22
Total	1,127.70				

Table 4 – Water Extracted From Storage

Party	Quantity (acre-feet)	Storage Account	Date
No stored water was extracted in the 2021-2022 AY.			

Table 5 – Storage Transfers

Party	Quantity (acre-feet)	Storage Account	Date
No stored water was transferred in the 2021-2022 AY.			

¹ ISA = Individual Storage Account

² CSP = Community Storage Pool

³ CC = Carryover Conversion

Table 6 – Historical Storage Summary

Year	Water Put Into Storage Transfers			Water Extracted From Storage			Storage Balance			Available Adjudicated Storage Capacity		
	ISA ¹	CSP ²	Total	ISA	CSP	Total	ISA	CSP	Total	ISA	CSP	Total
2014-15	1,097.77	0.00	1,097.77	0.00	0.00	0.00	1,097.77	0.00	1,097.77	24,702.23	35,500.00	60,202.23
2015-16	1,157.77	1,917.16	3,074.93	0.00	0.00	0.00	2,255.54	1,917.16	4,172.70	23,544.46	33,582.84	57,127.30
2016-17	3,000.90	1,765.10	4,766.00	0.00	0.00	0.00	5,256.44	3,682.26	8,938.70	20,543.56	31,817.74	52,361.30
2017-18	452.48	2,756.42	3,208.90	0.00	0.00	0.00	5,708.92	6,438.68	12,147.60	20,091.08	29,061.32	49,152.40
2018-19	0.00	1,127.70	1,127.70	0.00	0.00	0.00	5,708.92	7,566.38	13,275.30	20,091.08	27,933.62	48,024.70
2019-20	0.00	1,308.90	1,308.90	0.00	0.00	0.00	5,708.92	8,875.28	14,584.20	20,091.08	26,624.72	46,715.80
2020-21	0.00	1,127.70	1,127.70	0.00	0.00	0.00	5,708.92	10,002.98	15,711.90	20,091.08	25,497.02	45,588.10
2021-22	0.00	1,127.70	1,127.70	0.00	0.00	0.00	5,708.92	11,130.68	16,839.60	20,091.08	24,369.32	44,460.40

Table 7 – Over-extractions

Party	AR	Carryover and/or Stored Water	Max Allowable Extraction ³	Total Rights ⁴	Amount Pumped	Overextraction ⁵	Judgment Violation?
Pacific Crest Cemetery	39.40	Yes	47.28	57.64	65.73	-8.09	Yes
Total						-8.09	

¹ ISA = Individual Storage Account² CSP = Community Storage Pool³ Max Allowable Extraction: if a Party has carryover or stored water, they are allowed to extract up to 120% of AR +/- leases and not be in violation of the Judgment; if they do not have carryover and/or stored water, they are allowed to over-extract 10% or 2 af of AR +/- leases, whichever is greater.⁴ Total Rights= AR + carryover + leases + storage⁵ Overextraction= Total Rights - Amount Pumped

Table 8 - Non-Consumptive Water Use Permits

Party	Issued	Expired	2021-2022 Extraction ¹
Montrose Chemical Corporation (Resolution No. 17-1064)	November 01, 2017	October 31, 2022	0.96
Shell Oil ²	December 28, 2011	Pending Renewal	158.41
Total			159.37

Table 9 - Extractions by Non-Parties

Non-Party	Amount Pumped (acre-feet)
No extractions by Non-Parties in the 2021-2022 AY.	

¹ Total reflects net re-injection of treated water.

² Permit in process of renewal.

Table 10 – Leases (acre-feet)

Party	Transaction Type ¹	Amount	Recordation Date	Party	Net Amount
California Water Service Co./Hawthorne Lease	Lease with flex	1,882.00	02/01/13	Hawthorne, City of	1,882.00
Hawthorne, City of	Lease with flex	-1,882.00	02/01/13	California Water Service Co./Hawthorne Lease	-1,882.00
Hillside Memorial Park	Lease with flex	50.00	07/26/22	Lomita, City of	50.00
Hollywood Park Land Company, LLC	Lease with flex	-282.00	08/03/21	Inglewood, City of	-282.00
Inglewood, City of	Lease with flex	282.00	08/03/21	Hollywood Park Land Company, LLC	282.00
Lomita, City of	Lease with flex	-200.00	07/14/22	Roman Catholic Archbishop of Los Angeles	-250.00
Lomita, City of	Lease with flex	-50.00	07/26/22	Hillside Memorial Park	-250.00
Roman Catholic Archbishop of Los Angeles	Lease with flex	200.00	07/14/22	Lomita, City of	200.00
Shell Oil Company	Lease with flex	-1,019.50	10/17/17	Tesoro Refining & Marketing Company, LLC	-1,019.50
Tesoro Refining & Marketing Company, LLC	Lease with flex	1,019.50	10/17/17	Shell Oil Company	1,019.50
Total Leased Volume (a.f.)					3,443.50

¹ Leases with flexibility or “flex” transfers both the pumping right and associated carryover rights to the lessee, meaning if the party who leases in the rights “with flex” is allowed to carryover into the next AY any unused rights from the lease under the terms of the Judgment.

Table 11 – Permanent Transfers (acre-feet)

Party	Transaction Type	Amount	Recordation Date	Party	Net Amount
Ocean Industries, Inc	Sale	-0.10	7/1/2022	Lockheed Martin Corporation	-0.10
Lockheed Martin Corporation	Sale	0.10	7/1/2022	Ocean Industries, Inc	0.10
Total Change of Ownership					0.10

Table 12 – Exchange Pool

Party	AR	Required Offer	Actual Offer	Amount Sold	Payment Due Exchanger
No requests for the Exchange Pool Program in the 2021-2022 AY.					

Table 13 – Extraction Wells Completed

Party	Recordation No.	State Well No.	Owner Designation
No extraction wells reported completed in the 2021-2022 AY.			

Table 14 – Extraction Wells Destroyed

Party	Recordation No.	State Well No.	Owner Designation
No extraction wells reported destroyed in the 2021-2022 AY.			

Table 15 – Replenishment Operations

Water spread in the Montebello Forebay area of the Central Basin provides subsurface recharge to the West Coast Basin.

Source of Water	Quantity (acre-feet)	
	2020-2021	2021- 2022
Local Runoff	24,399	23,816
Recycled Water:		
Whittier Narrows Water Reclamation Plant	7,687	7,471
San Jose Water Reclamation Plant	34,653	43,746
Pomona Water Reclamation Plant	2,240	3,397
Advanced Treated Water:		
Albert Robles Center Advanced Water Treatment Plant	10,852	11,616
MWD untreated Tier 1 water purchased by WRD	0	0
Make-up water from Upper San Gabriel Basin	0	0
Total	79,831	90,046

Table 16 - WRD In-Lieu Recharge

Party	In-Lieu Amount (acre-feet)
No in-lieu recharge in the 2021-2022 AY.	

Table 17 - Imported Water Use

Source of Water	Party/Entity	Quantity (acre-feet)	
		2020-2021	2021- 2022
Colorado River and State Water Project	Long Beach, City of	19,660 ¹	22,762 ¹
Colorado River and State Water Project	West Basin Municipal Water District:		
	California American Water Company	1,004	844
	California Water Service Company ²	10,056	9,330
	California Water Service Company (Dominguez)	22,037	21,797
	California Water Service Company (Hawthorne Lease)	3,172	3,631
	El Segundo, City of	5,535	7,938
	Golden State Water Company	16,628	16,375
	Inglewood, City of	6,195	6,495
	Lomita, City of	2,093	1,986
	Manhattan Beach, City of	4,858	4,443
	West Basin MWD Subtotal	71,578	72,839
Colorado River and State Water Project	Torrance, City of	14,341	13,993
Owens River-Mono Basin, Colorado River, and State Water Project	Los Angeles, City of	29,471	28,835
Central Basin Groundwater	California-American Water Company	2,020	2,040
Total Imported Water		137,070	140,469

¹ The values of imported water from the City of Long Beach are the same in the Central Basin.

² Excludes acre-feet of imported water that was exported to Palos Verdes.

Table 18 – Recycled Water Use

Source of Water	Party/Entity	Quantity (acre-feet) ¹	
		2020-2021	2021- 2022
West Basin Municipal Water District:	California Water Service Company	224	227
	California Water Service Company (Hawthorne Lease)	101	111
	California Water Service Company (Dominguez)	5,182	4,170
	El Segundo, City of	9,417	9,574
	Golden State Water Company	495	423
	Inglewood, City of	899	743
	Los Angeles, City of	1,416	1,246
	Manhattan Beach, City of	276	275
	Torrance, City of	5,447	338
Total Recycled Water		23,458	17,107

Table 19 – Seawater Intrusion Barrier Project Operations

Provisional data provided by the Los Angeles County Department of Public Works.

Source of Water	Quantity (acre-feet)	
	2020-2021	2021- 2022
West Coast Basin Barrier		
Imported Water Injection	1,556	9,212
Recycled Water Injection	10,995	1,665
Dominguez Gap Barrier		
Imported Water Injection	5,049	3,450
Recycled Water Injection	4,510	4,819
Total	22,110	19,146

¹ Excludes recycled water used for groundwater recharge.

Table 20 - Apportionment of Budget Among Rights Holders

Party	AR (acre-feet)	Water Rights Panel	Administrative Body	Total Amount Billed
A B C Nursery Inc.	24.10	\$0.00	\$60.11	\$60.11
Honeywell International Inc.	22.50	\$0.00	\$57.45	\$57.45
Asahi Fancy Koi Inc.	2.00	\$0.00	\$23.33	\$23.33
Automation Industries Inc.	0.70	\$0.00	\$21.17	\$21.17
CBS Inc.	9.50	\$0.00	\$35.81	\$35.81
California Water Service Company - Hermosa / Redondo	4,070.00	\$0.00	\$6,794.55	\$6,794.55
California Water Service Company - Dominquez	10,417.45	\$0.00	\$17,359.94	\$17,359.94
Carson Harbor Village Mobile Home Park	7.00	\$0.00	\$31.65	\$31.65
Carson-Madrona Company #3 Del Amo	104.00	\$0.00	\$193.11	\$193.11
Century Builders	4.70	\$0.00	\$27.82	\$27.82
Chandler Palos Verdes Sand & Gravel Company	4.20	\$0.00	\$26.99	\$26.99
Chevron U.S.A. Inc.	4,601.30	\$0.00	\$7,678.91	\$7,678.91
Coastline Church of Christ	0.70	\$0.00	\$21.17	\$21.17
Phillips 66 Company	6,170.00	\$0.00	\$10,290.02	\$10,290.02
Curtis, Owen	0.36	\$0.00	\$20.60	\$20.60
Estate of Golda Delaney	4.10	\$0.00	\$26.82	\$26.82
El Segundo, City of	953.00	\$0.00	\$1,606.28	\$1,606.28
Susan Engelsma Trust	12.10	\$0.00	\$40.14	\$40.14
Evergreen America Corporation	5.40	\$0.00	\$28.99	\$28.99
Fujimoto, S R & S T & J K	20.00	\$0.00	\$53.29	\$53.29
Gillingham, Florence R, et al	2.40	\$0.00	\$23.99	\$23.99
Golden State Water Company	7,502.24	\$0.00	\$12,507.55	\$12,507.55
Hawthorne, City of (California Water Service Co.)	1,882.00	\$0.00	\$3,152.61	\$3,152.61
Hillside Memorial Park	104.10	\$0.00	\$193.28	\$193.28
Hollywood Park Land Company, LLC	282.00	\$0.00	\$489.39	\$489.39
Honold, Kristin Brandsma	11.80	\$0.00	\$39.64	\$39.64
Inglewood, City of	4,449.89	\$0.00	\$7,426.88	\$7,426.88
Kinder Morgan Liquids Terminals, LLC	167.00	\$0.00	\$297.97	\$297.97
Estate of Emma L. Leuzinger	1.40	\$0.00	\$22.33	\$22.33
Long Beach, City of	0.70	\$0.00	\$21.17	\$21.17
Frank Lopes	3.70	\$0.00	\$26.16	\$26.16
Los Angeles Department of Water and Power, City of	1,503.00	\$0.00	\$2,521.76	\$2,521.76
Los Angeles County Recreation Facilities	363.70	\$0.00	\$625.38	\$625.38
Los Angeles County Sanitation District No. 2	102.00	\$0.00	\$189.78	\$189.78
Lomita Water System, City of	1,352.00	\$0.00	\$2,270.42	\$2,270.42
Loyola Marymount University	48.10	\$0.00	\$100.06	\$100.06
Manhattan Beach, City of	1,131.20	\$0.00	\$1,902.89	\$1,902.89
McDonnell Douglas Corporation	1.70	\$0.00	\$22.83	\$22.83
Torrance Refining Company	2,596.40	\$0.00	\$4,341.73	\$4,341.73
Montrose Chemical Corporation of California	1.20	\$0.00	\$22.00	\$22.00
Roy H. and Kenji Mori	3.60	\$0.00	\$25.99	\$25.99
Northrop Corporation	38.15	\$0.00	\$83.50	\$83.50
Nozaki, Sumikichi	7.00	\$0.00	\$31.65	\$31.65
Pacific Crest Cemetery Company	39.40	\$0.00	\$85.58	\$85.58
Josephine P. Rehor	2.20	\$0.00	\$23.66	\$23.66
Eco Services Operations LLC	521.00	\$0.00	\$887.21	\$887.21

West Coast Basin Watermaster

Party	AR (acre-feet)	Water Rights Panel	Administrative Body	Total Amount Billed
Rolling Hills Country Club	290.00	\$0.00	\$502.71	\$502.71
Roman Catholic Archbishop of Los Angeles	72.30	\$0.00	\$140.34	\$140.34
Shell Oil Company	1,019.50	\$0.00	\$1,716.97	\$1,716.97
Southern California Edison Company	57.10	\$0.00	\$115.05	\$115.05
Tesoro Refining & Marketing Company LLC	8,741.00	\$0.00	\$14,569.48	\$14,569.48
Torrance, City of	5,638.86	\$0.00	\$9,405.93	\$9,405.93
Vukelich, Mike, Jr.	10.00	\$0.00	\$36.65	\$36.65
Watson Land Company	80.20	\$0.00	\$153.49	\$153.49
Ocean Industries, Inc.	0.10	\$0.00	\$20.17	\$20.17
Wiseburn School District	8.20	\$0.00	\$33.65	\$33.65
Total	64,468.25	\$0.00	\$108,428.00	\$108,428.00

Figure 1 - West Coast Basin
(showing groundwater production)

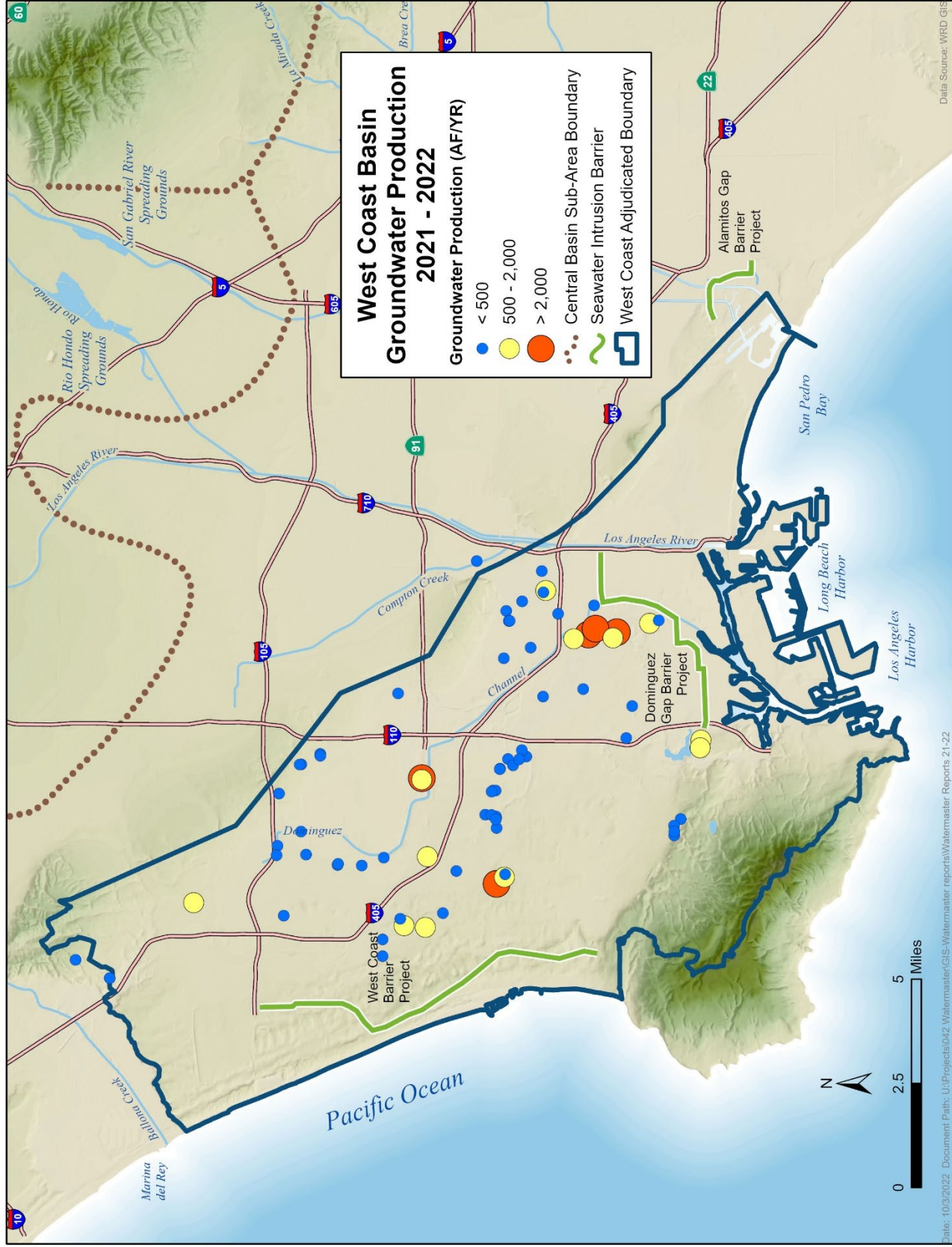


Figure 2 – Monthly Water Production
(excludes non-consumptive use)

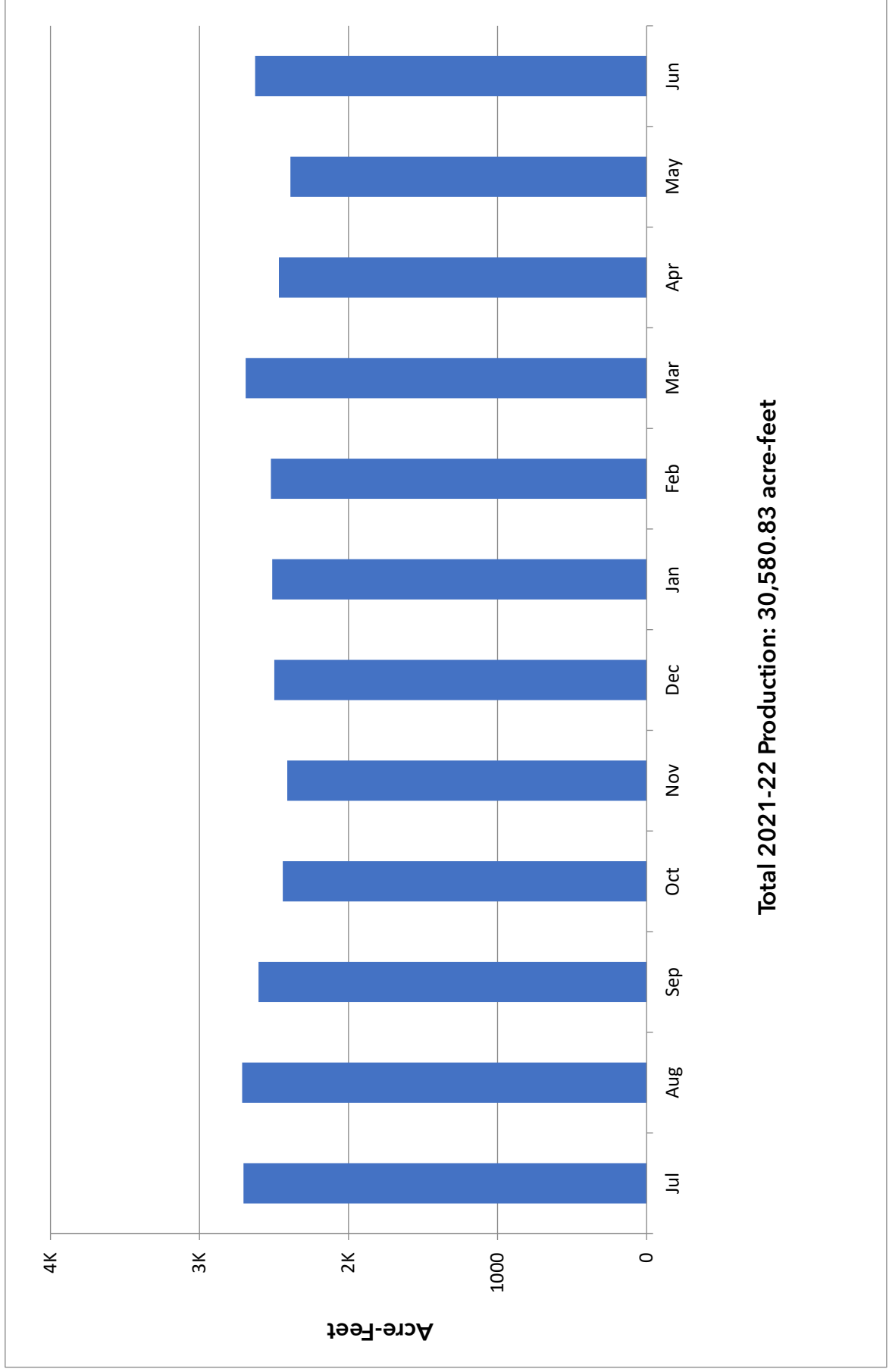


Figure 3 - West Coast Basin
(showing key wells and facilities)

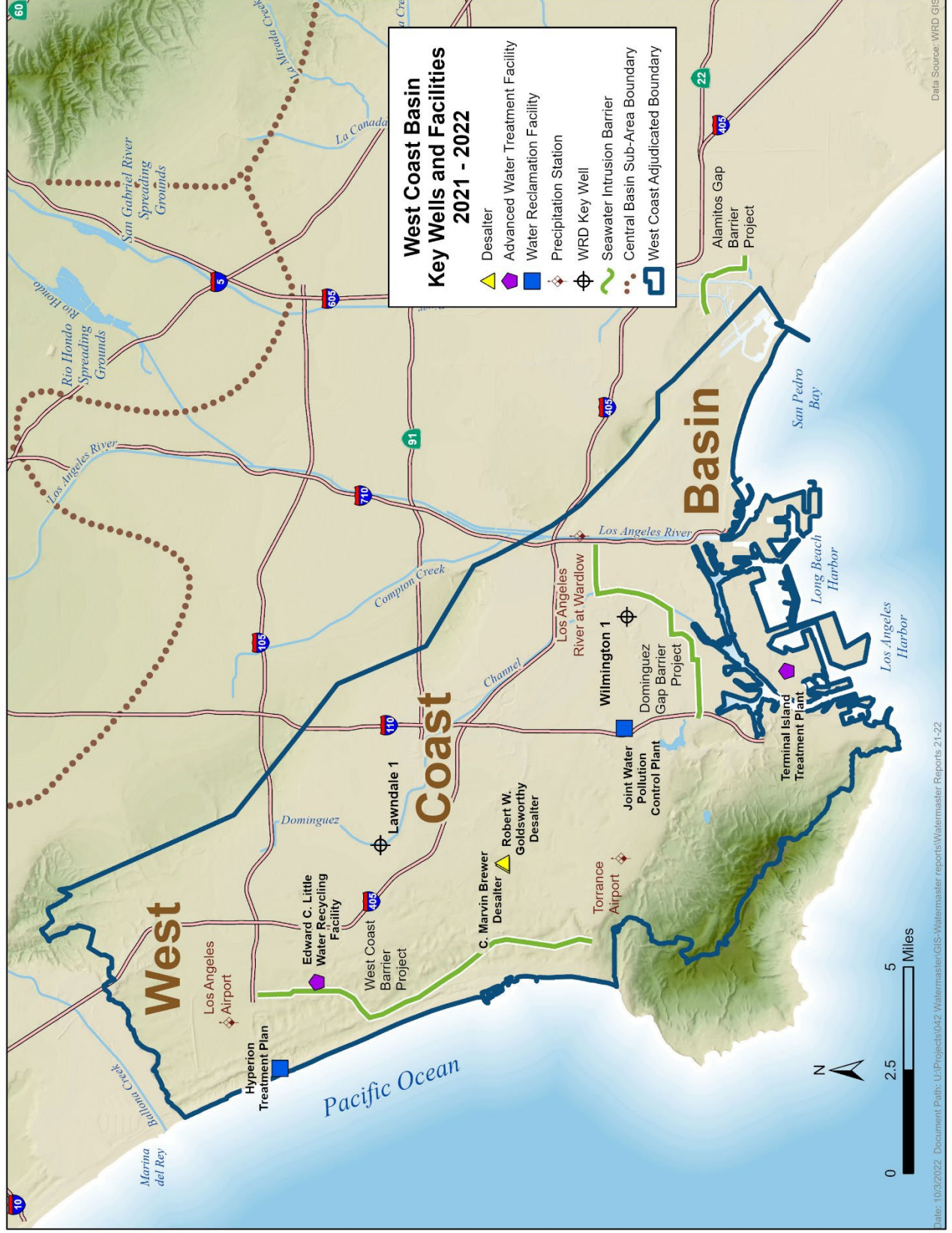


Figure 4 – Monthly Mean Precipitation

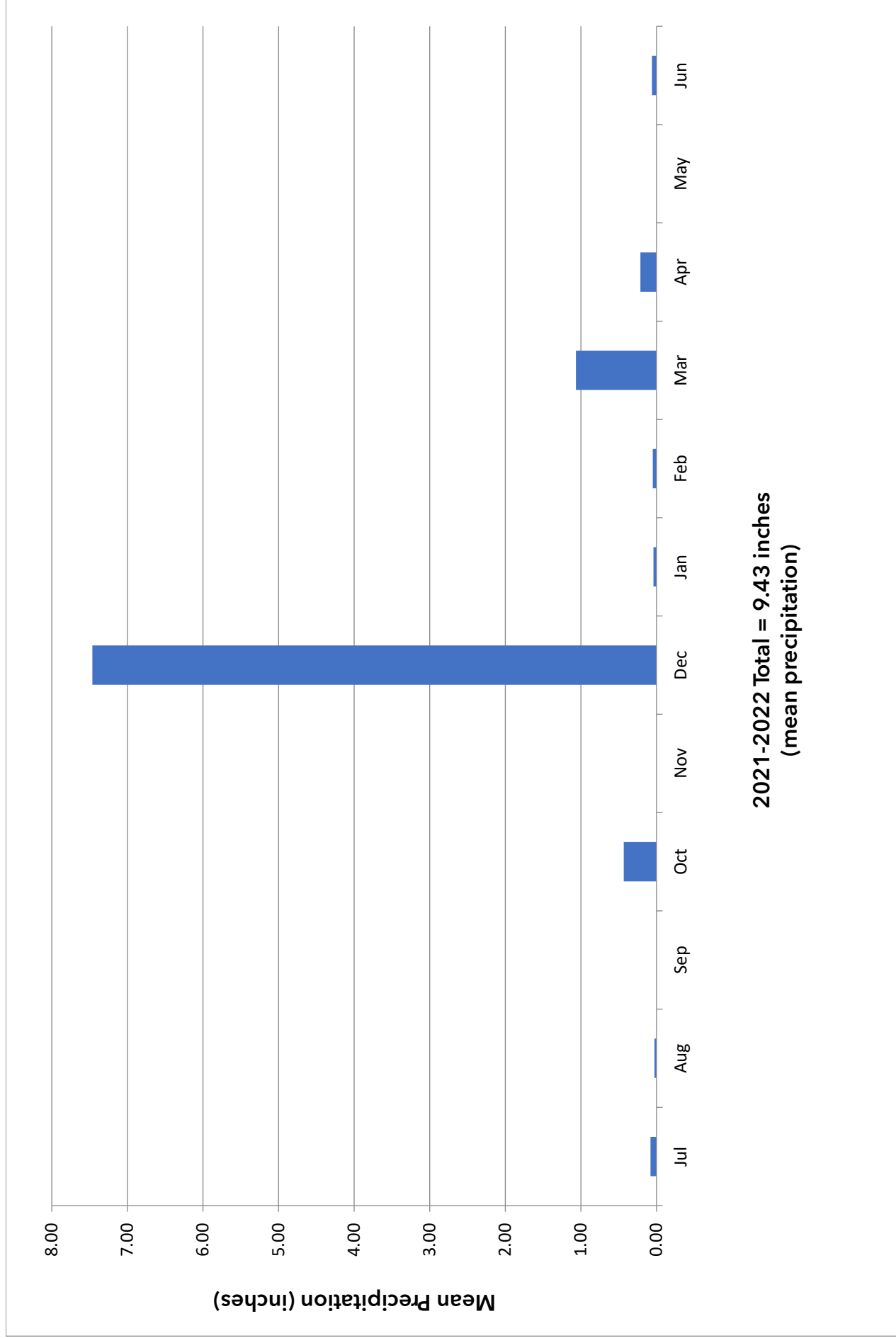


Figure 5 - Total Water Use
(Excludes Groundwater Recharge)

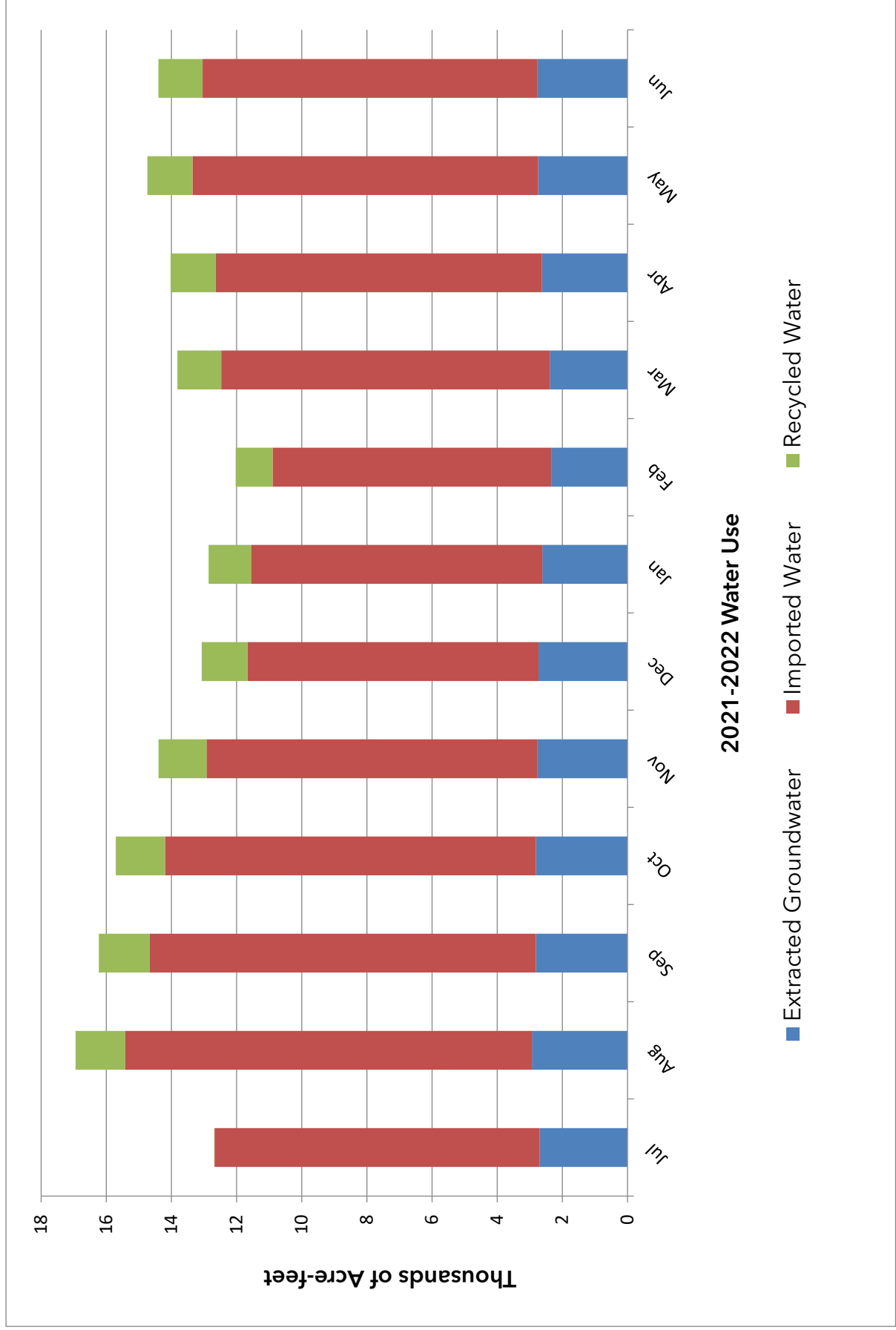
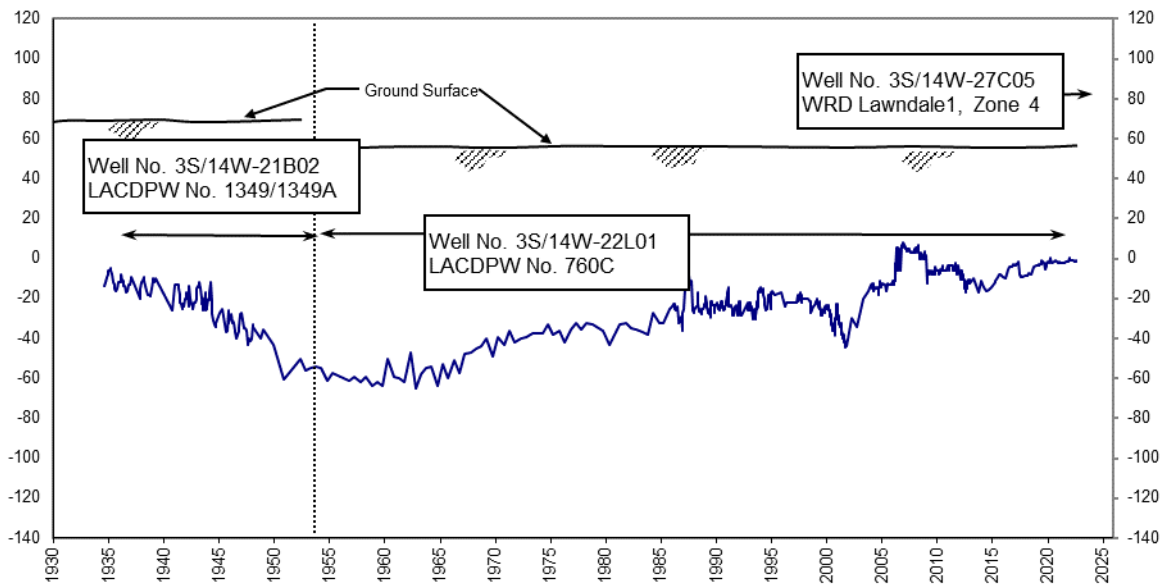
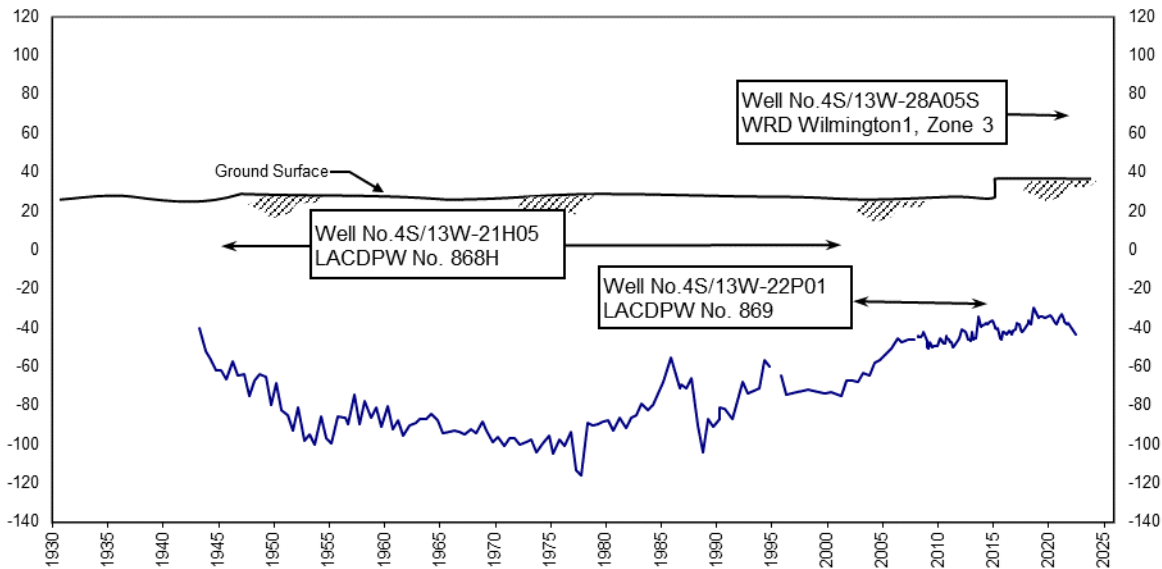


Figure 6 - Water Level Hydrographs

Lawndale1 Key Well



Wilmington1 Key Well



See Figure 3 for well locations.

X-Axis: Year

Y-Axis: Groundwater Elevation (feet mean sea level)

Appendix A

Groundwater Extractions

July 2021- June 2022

Appendix A - Groundwater Extractions (acre-feet)

7002 - ABC Nursery, Inc.		JUL	AUG	SEPT	OCT	NOV	DEC	JAN	FEB	MAR	APR	MAY	JUN	TOTAL
SWN/Owner No.		1.20	1.20	1.20	1.20	1.20	1.20	1.20	1.20	1.20	1.20	1.20	1.20	14.40
3S/13W-29F11S/1		1.20	1.20	1.20	1.20	1.20	1.20	1.20	1.20	1.20	1.20	1.20	1.20	14.40
7052 - California Water Service Co./Hawthorne Lease		JUL	AUG	SEPT	OCT	NOV	DEC	JAN	FEB	MAR	APR	MAY	JUN	TOTAL
SWN/Owner No.		14.02	0.00	0.00	0.00	0.59	0.00	0.60	0.00	0.00	4.64	44.90	15.05	79.80
3S/14W-09M01S/13		14.02	0.00	0.00	0.00	0.59	0.00	0.60	0.00	0.00	4.64	44.90	15.05	79.80
7050 - California Water Service Company		JUL	AUG	SEPT	OCT	NOV	DEC	JAN	FEB	MAR	APR	MAY	JUN	TOTAL
SWN/Owner No.		182.05	174.18	166.89	114.63	82.80	85.08	105.41	76.74	48.22	86.34	65.82	70.10	1,258.26
003S014W29H001S/30-01		0.00	0.00	0.00	0.00	0.00	0.00	0.18	0.40	0.09	0.00	0.00	0.23	0.90
003S014W29J001S/22-01		87.62	85.62	82.70	76.73	82.80	84.76	50.88	0.58	0.79	1.02	18.69	17.50	589.69
003S014W32A002S/08-02		94.43	88.56	84.19	37.90	0.00	0.32	54.35	75.76	47.34	85.32	47.13	52.37	667.67
7053 - California Water Service Company (Dominguez)		JUL	AUG	SEPT	OCT	NOV	DEC	JAN	FEB	MAR	APR	MAY	JUN	TOTAL
SWN/Owner No.		155.83	153.26	138.70	196.40	178.48	188.15	133.92	113.61	323.59	101.51	107.90	254.64	2,045.99
004S013W11P002S/294-01		0.00	0.00	0.00	0.00	0.00	0.00	0.00	0.00	195.07	0.00	0.00	0.00	195.07
004S013W15A011S/215-01		76.19	79.72	74.50	79.90	77.13	74.51	78.70	62.66	78.30	75.48	69.88	63.43	890.40
004S013W15A014S/298-01		0.00	0.00	0.00	0.00	0.00	0.00	0.00	0.00	2.14	0.00	26.63	180.51	209.28
004S013W15F001S/277-01		0.00	0.00	0.00	0.00	60.37	57.39	55.05	50.95	48.08	26.03	11.39	10.70	319.96
004S013W20C001S/279-01		79.64	73.51	64.20	116.50	40.98	56.25	0.17	0.00	0.00	0.00	0.00	0.00	431.25
004S013W29E006S/275-01		0.00	0.03	0.00	0.00	0.00	0.00	0.00	0.00	0.00	0.00	0.00	0.00	0.03
7623 - Eco Services Operations, LLC		JUL	AUG	SEPT	OCT	NOV	DEC	JAN	FEB	MAR	APR	MAY	JUN	TOTAL
SWN/Owner No.		30.83	31.10	31.02	29.76	31.73	46.60	20.43	25.44	29.57	16.28	17.20	26.37	336.33
004S013W10C004S/2		30.83	31.10	31.02	29.76	31.73	46.60	20.43	25.44	29.57	16.28	17.20	26.37	336.33

Appendix A - Groundwater Extractions Continued

7226 - Golden State Water Company		JUL	AUG	SEPT	OCT	NOV	DEC	JAN	FEB	MAR	APR	MAY	JUN	TOTAL
SWN/Owner No.		420.75	414.79	384.42	386.38	386.51	394.26	477.97	467.91	309.28	288.80	272.35	406.50	4,609.92
003S014W13B003S/BA004		0.00	0.00	0.00	0.00	0.00	0.00	0.00	3.77	0.00	0.05	0.00	0.03	3.85
003S014W13B004S/BA005		0.09	0.09	0.00	0.00	0.00	0.00	0.00	0.00	0.06	0.04	0.00	1.81	2.09
003S014W13J009S/S0005		0.18	0.11	0.19	0.43	0.29	0.24	0.00	0.00	0.00	0.00	0.00	0.00	1.44
003S014W13J010S/S0006		0.65	0.07	0.24	0.65	0.45	0.45	0.98	0.00	1.38	0.92	0.38	0.32	6.49
003S014W14D002S/129-02		0.35	2.43	2.25	1.48	0.70	0.15	86.80	130.19	53.88	11.20	1.96	130.17	421.56
003S014W15B003S/Goldmedal		0.00	0.21	0.00	0.07	0.00	0.23	0.05	4.93	0.61	0.10	0.07	0.26	6.53
003S014W15P001S/Doty1		0.47	6.81	0.00	0.14	0.00	0.12	0.40	4.17	0.72	0.03	0.11	0.31	13.28
003S014W15P002S/Doty2		0.00	1.70	0.00	0.31	0.00	0.14	0.62	6.22	5.45	0.21	0.14	0.39	15.18
003S014W22L001S/CD001		0.21	0.16	0.12	0.08	0.14	0.10	0.27	0.08	0.12	0.09	0.04	0.10	1.51
003S014W25P004S/DA001		96.72	96.13	92.43	95.30	90.62	90.86	86.58	28.67	0.00	0.00	0.00	0.04	677.35
003S014W25P006S/DA002		322.08	307.08	289.19	287.92	294.31	301.97	302.27	289.88	247.06	276.16	269.65	273.07	3,460.64
7270 - Hillside Memorial Park		JUL	AUG	SEPT	OCT	NOV	DEC	JAN	FEB	MAR	APR	MAY	JUN	TOTAL
SWN/Owner No.		15.01	16.60	12.44	7.08	3.21	1.02	3.45	7.92	9.49	13.43	17.01	18.71	125.37
002S014W19K004S/3		15.01	16.60	12.44	7.08	3.21	1.02	3.45	7.92	9.49	13.43	17.01	18.71	125.37
7310 - Inglewood, City of		JUL	AUG	SEPT	OCT	NOV	DEC	JAN	FEB	MAR	APR	MAY	JUN	TOTAL
SWN/Owner No.		176.10	219.59	192.49	172.34	171.97	163.43	159.35	144.40	158.95	151.41	155.32	147.25	2,012.60
002S014W33F001S/Well		167.72	165.18	162.33	166.41	158.54	163.43	159.35	144.40	158.95	151.41	155.32	147.25	1,900.29
003S014W10G004S/2		8.38	54.41	30.16	5.93	13.43	0.00	0.00	0.00	0.00	0.00	0.00	0.00	112.31
7364 - Kinder Morgan Liquids Terminals LLC		JUL	AUG	SEPT	OCT	NOV	DEC	JAN	FEB	MAR	APR	MAY	JUN	TOTAL
SWN/Owner No.		3.77	1.29	3.17	1.78	3.48	2.75	4.15	2.91	3.26	3.47	4.68	2.51	37.22
No state well number		3.77	1.29	3.17	1.78	3.48	2.75	4.15	2.91	3.26	3.47	4.68	2.51	37.22

Appendix A - Groundwater Extractions Continued

7450 - Lomita, City of	JUL	AUG	SEPT	OCT	NOV	DEC	JAN	FEB	MAR	APR	MAY	JUN	TOTAL
SWN/Owner No.	0.00	0.03	0.00	0.00	0.00	0.00	0.00	0.00	0.00	0.00	0.00	0.00	0.03
004S014W35E007S/5	0.00	0.03	0.00	0.00	0.00	0.00	0.00	0.00	0.00	0.00	0.00	0.00	0.03
7435 - Los Angeles County Department of Parks & Recreation	JUL	AUG	SEPT	OCT	NOV	DEC	JAN	FEB	MAR	APR	MAY	JUN	TOTAL
SWN/Owner No.	40.88	43.45	39.93	26.18	24.03	4.32	5.24	17.74	34.60	34.22	58.29	39.75	368.63
003S014W27C001S/00761	40.88	43.45	39.93	26.18	24.03	4.32	5.24	17.74	34.60	34.22	58.29	39.75	368.63
7490 - Manhattan Beach, City of	JUL	AUG	SEPT	OCT	NOV	DEC	JAN	FEB	MAR	APR	MAY	JUN	TOTAL
SWN/Owner No.	12.22	19.08	17.12	14.94	13.13	2.99	11.70	20.74	51.09	36.99	35.26	35.33	270.59
003S014W29C003S/15	12.22	19.08	17.12	14.94	12.38	2.58	11.21	15.91	0.00	0.00	0.00	0.00	105.44
003S014W29D005S/11A	0.00	0.00	0.00	0.00	0.75	0.41	0.49	4.83	51.09	36.99	35.26	35.33	165.15
7514 - Montrose Chemical Corporation of California	JUL	AUG	SEPT	OCT	NOV	DEC	JAN	FEB	MAR	APR	MAY	JUN	TOTAL
SWN/Owner No.	0.02	0.00	0.11	0.08	0.22	-0.08	-0.24	0.30	0.20	0.00	0.32	0.03	0.96
004S014W12B006S/G-EW-1	2.33	11.06	9.05	7.32	7.00	11.26	0.19	6.71	17.8	4.94	19.71	10.29	107.66
004S014W12A003S/G-IW-5	-1.69	-8.2	-4.36	-5.32	-4.81	0.00	0.00	0.00	0.00	0.00	0.00	0.00	-24.38
004S014W01P003S/BF-EW-5	0.00	0.00	0.00	0.00	0.00	0.00	0.00	0.00	0.00	0.10	0.00	0.00	0.10
004S014W12B005S/BF-EW-1	0.16	1.52	1.24	1.00	0.96	1.54	0.03	0.92	2.44	0.68	2.69	1.41	14.59
004S014W12J003S/G-EW-2	0.45	2.15	1.73	1.42	1.36	2.19	0.04	1.30	3.46	0.96	4.17	2.49	21.72
004S014W01P002S/UBAEW1	0.07	0.32	0.26	0.21	0.20	0.32	0.01	0.19	0.51	0.14	0.56	0.29	3.08
004S014W01N004S/G-IW-7	0.00	-3.94	-5.54	-0.85	-0.01	-7.82	-0.28	-5.08	-15.82	-4.49	-16.10	-8.83	-68.76
004S014W01N002S/G-IW-1	-2.11	-8.25	-6.32	-7.73	-4.56	-11.06	-0.06	-6.12	-15.86	-3.69	-19.31	-10.74	-95.81
004S014W12G001S/BF-EW-3	0.36	1.71	1.38	1.13	1.08	1.74	0.03	1.04	2.75	1.04	7.15	4.51	23.92
004S014W12L001S/G-EW-3	0.27	1.26	1.02	0.84	0.80	1.29	0.02	0.77	2.03	0.56	3.01	2.30	14.17
004S014W12B002S/UBAEW3	0.12	0.57	0.47	0.38	0.36	0.58	0.01	0.35	0.91	0.14	1.01	0.53	5.43
004S014W01N003S/G-IW-3	-2.27	-9.26	-7.74	-5.46	-9.16	-11.37	-0.42	-6.47	-15.84	-4.62	-19.43	-10.82	-102.86

Appendix A - Groundwater Extractions Continued

7514 - Montrose Chemical Corp of California (NCWUP)	JUL	AUG	SEPT	OCT	NOV	DEC	JAN	FEB	MAR	APR	MAY	JUN	TOTAL
SWN/Owner No.	0.02	0.00	0.11	0.08	0.22	-0.08	-0.24	0.30	0.20	0.00	0.32	0.03	0.96
004S014W12J002S/BF-EW-4	1.00	4.74	3.82	2.96	3.00	4.82	0.08	2.88	7.63	2.97	16.86	8.60	59.36
No state well number/G-EW-4	1.33	6.32	5.10	4.18	4.00	6.43	0.11	3.81	10.19	1.27	0.00	0.00	42.74
7580 - Pacific Crest Cemetery Company	JUL	AUG	SEPT	OCT	NOV	DEC	JAN	FEB	MAR	APR	MAY	JUN	TOTAL
SWN/Owner No.	6.38	11.94	4.36	5.57	3.93	1.83	2.76	5.08	4.62	4.89	7.23	7.14	65.73
003S014W33E001S/7Z	6.38	11.94	4.36	5.57	3.93	1.83	2.76	5.08	4.62	4.89	7.23	7.14	65.73
7093 - Phillips 66 Company	JUL	AUG	SEPT	OCT	NOV	DEC	JAN	FEB	MAR	APR	MAY	JUN	TOTAL
SWN/Owner No.	554.05	549.53	513.67	494.80	513.76	524.48	534.57	506.67	572.69	593.36	529.20	492.33	6,379.11
004S013W21J003S/5	0.00	0.00	7.01	25.96	0.00	107.88	154.18	127.52	130.89	100.10	87.04	63.92	804.50
004S013W21R011S/CBP Well	312.74	325.53	296.69	266.62	336.34	249.64	217.67	216.67	255.16	293.99	242.80	242.50	3,256.35
004S013W31N004S/LA006	58.36	58.00	55.67	56.69	53.67	54.02	44.71	60.24	66.07	62.92	64.03	60.90	695.28
004S013W31P003S/7	182.95	166.00	154.30	145.53	123.75	112.94	118.01	102.24	120.57	136.35	135.33	125.01	1,622.98
7655 - Rolling Hills Country Club	JUL	AUG	SEPT	OCT	NOV	DEC	JAN	FEB	MAR	APR	MAY	JUN	TOTAL
SWN/Owner No.	45.00	33.00	25.00	16.00	8.00	3.00	2.00	20.00	24.00	32.00	48.00	77.00	333.00
004S014W34H002S/Lake Well 2	2.00	0.00	0.00	0.00	0.00	0.00	0.00	0.00	0.00	0.00	36.00	77.00	115.00
004S014W35F002S/PLANT	43.00	33.00	25.00	16.00	8.00	3.00	2.00	20.00	24.00	32.00	12.00	0.00	218.00
7659 - Roman Catholic Archbishop of Los Angeles	JUL	AUG	SEPT	OCT	NOV	DEC	JAN	FEB	MAR	APR	MAY	JUN	TOTAL
SWN/Owner No.	0.00	18.91	39.64	27.58	32.37	12.06	15.25	20.95	33.00	32.50	39.95	14.78	286.99
002S014W18J001S/AA	0.00	18.91	39.64	27.58	32.37	12.06	15.25	20.95	33.00	32.50	39.95	14.78	286.99

Appendix A - Groundwater Extractions Continued

7701 - Shell Oil Co (NCWUP)		JUL	AUG	SEPT	OCT	NOV	DEC	JAN	FEB	MAR	APR	MAY	JUN	TOTAL
SWN/Owner No.		17.77	16.15	17.24	18.45	16.59	11.47	5.23	9.31	11.06	11.49	12.36	11.29	158.41
004S013W09D001S/DR-7		0.01	0.04	0.03	0.01	0.00	0.00	0.00	0.00	0.00	0.00	0.00	0.00	0.09
004S013W10E007S/DD-3		8.14	8.95	8.44	8.99	7.69	3.17	1.86	3.67	4.12	4.25	5.79	6.17	71.24
004S013W10K002S/DOM-GSP-R2M		9.62	7.16	8.77	9.45	8.90	8.30	3.37	5.64	6.94	7.24	6.57	5.12	87.08
7720 - Southern California Edison Co.		JUL	AUG	SEPT	OCT	NOV	DEC	JAN	FEB	MAR	APR	MAY	JUN	TOTAL
SWN/Owner No.		2.00	3.00	2.00	2.00	1.00	0.93	0.75	2.45	1.98	2.25	1.54	3.37	23.27
003S014W34N004S/SCECO		2.00	3.00	2.00	2.00	1.00	0.93	0.75	2.45	1.98	2.25	1.54	3.37	23.27
7807 - Tesoro Refining & Marketing Co., LLC		JUL	AUG	SEPT	OCT	NOV	DEC	JAN	FEB	MAR	APR	MAY	JUN	TOTAL
SWN/Owner No.		807.38	828.29	794.19	694.21	696.33	889.74	790.56	847.58	804.09	811.74	772.71	785.14	9,521.96
004S013W16J006S/VWV-14		99.84	99.47	94.28	79.75	66.69	56.52	66.75	71.17	67.09	57.84	60.41	55.41	875.22
004S013W16R003S/Well 17		312.50	329.34	308.67	283.40	298.73	306.04	319.65	324.29	334.65	332.01	262.40	337.45	3,749.13
004S013W21H008S/Well 16		271.74	320.57	308.67	257.67	251.52	228.41	246.33	254.18	255.74	247.41	255.62	258.95	3,156.81
004S013W22F007S/SRP12		16.24	15.44	16.55	18.00	17.67	17.16	16.40	14.64	13.11	14.11	14.28	13.35	186.95
004S013W27M006S/15		37.49	0.00	0.00	0.00	0.00	202.71	110.27	178.89	126.01	157.36	171.51	113.81	1,098.05
004S013W27N006S/SHE12		59.60	53.86	54.40	45.99	54.36	68.26	24.11	0.00	0.00	0.00	0.00	0.00	360.58
009S099W99P099S/REMED		9.97	9.61	11.62	9.40	7.36	10.64	7.05	4.41	7.49	3.01	8.49	6.17	95.22
7510 - Torrance Refining & Marketing Company		JUL	AUG	SEPT	OCT	NOV	DEC	JAN	FEB	MAR	APR	MAY	JUN	TOTAL
SWN/Owner No.		81.55	67.17	84.44	81.85	85.63	84.42	70.53	92.90	105.91	95.84	61.89	74.20	986.33
004S014W02F001S/EW-5		26.16	25.68	26.82	28.86	26.97	27.22	24.77	23.15	28.27	31.65	35.21	34.13	338.89
004S014W02L002S/EW-3		12.15	0.85	12.32	4.89	12.90	12.83	0.36	12.21	13.99	16.50	6.02	16.37	121.39
004S014W02L003S/EW-4		0.00	0.00	0.00	0.00	0.00	0.00	6.23	13.48	14.44	16.75	6.47	0.01	57.38
004S014W02M004S/EW-1		21.90	29.05	29.71	31.09	29.52	28.68	28.12	26.86	28.67	6.02	0.00	2.45	262.07
004S014W02P001S/EW-02R		21.34	11.59	15.59	17.01	16.24	15.69	11.05	17.20	20.54	24.92	14.19	21.24	206.60

Appendix A - Groundwater Extractions Continued

7850 - Torrance, City of	JUL	AUG	SEPT	OCT	NOV	DEC	JAN	FEB	MAR	APR	MAY	JUN	TOTAL
SWN/Owner No.	156.17	127.15	153.49	168.41	172.84	92.28	172.55	146.97	174.41	156.18	149.81	155.04	1,825.30
003S014W34C003S/9	156.17	127.15	153.49	168.41	172.84	92.28	172.55	146.97	174.41	156.18	149.81	155.04	1,825.30
7917- Water Replenishment District	JUL	AUG	SEPT	OCT	NOV	DEC	JAN	FEB	MAR	APR	MAY	JUN	TOTAL
SWN/Owner No.	312.68	412.66	428.71	416.93	377.12	331.87	275.84	237.00	549.15	440.60	438.53	426.52	4,647.61
004S014W04R001S/Delthorne Park	223.72	279.97	272.31	286.73	238.70	231.17	220.80	139.98	248.46	270.10	274.07	277.77	2,963.78
004S014W04R002S/City Yard	88.96	132.69	156.40	130.20	138.42	100.70	55.04	97.02	300.69	170.50	164.46	148.75	1,683.83

Appendix B

Successions of Adjudicated Rights
as of
June 2022

Appendix B – Succession of Adjudicated Rights June 2022 (acre-feet)

ABC NURSERY, INC			BARCLAY, RICHARD AND R A WATT		
SUCCESSOR TO JENKINS, HARRY C	1.80		SUCCESSORS TO EMMA J OSBORN	32.66	
SUCCESSOR TO TITLE, SIDNEY R AND CHARLOTTE W	13.60		SUCCESSORS IN PART TO ISABELA J GRANZ ESTATE	13.55	
SUCCESSOR TO VERBURG, WILLIAM AND CLARA B	6.70		SUCCESSORS IN PART TO GEORGE R MURDOCK SOLD TO CITY OF TORRANCE	13.75	
SUCCESSOR IN PART TO UNITED CALIFORNIA BANK	2.00		TOTAL	-59.96	0.00
TOTAL		24.10	BAUMAN, GUS A	0.00	
ABELL, FRANK	1.80		TRANSFERRED TO PALOS VERDES BEGONIA FARM		
SOLD TO CITY OF INGLEWOOD	-1.80		TOTAL		0.00
TOTAL		0.00	BEGO CORPORATION	4.10	
ALCAST FOUNDRY, ET AL	7.20		SOLD TO ESTATE OF GOLDA DELANEY	-4.10	
SOLD TO CITY OF TORRANCE	-7.20		TOTAL		0.00
TOTAL		0.00	BELVIDERE MUTUAL WATER CO	33.40	
ALLIED CHEMICAL CORP			SOLD TO CITY OF TORRANCE	-33.40	
(SEE INDUSTRIAL CHEMICAL DIVISION, ALLIED CHEMICAL CORP)			TOTAL		0.00
ALLIED CORP			BLACK, DANA		
(FORMERLY: ALLIED CHEMICAL CORP)			SUCCESSOR IN PART TO ESTATE OF JOHN GRANT	11.80	
(NOW KNOWN AS ALLIED-SIGNAL, INC [EL SEGUNDO OFFICE])			SOLD TO ECOGAS, INC.	-11.80	
ALLIED-SIGNAL, INC (TORRANCE OFFICE)			TOTAL		0.00
SUCCESSOR TO GARRETT CORP, THE	22.50		BOISE CASCADE BUILDING CO		
(MERGED WITH HONEYWELL INTERNATIONAL, INC AND NAME CHANGED TO HONEYWELL INTERNATIONAL, INC)	-22.50		SUCCESSOR IN PART TO JOUGHIN TORRANCE RANCH	16.92	
TOTAL		0.00	SOLD TO INGLEWOOD, CITY OF	-16.92	
ALLIED-SIGNAL, INC (EL SEGUNDO OFFICE)			TOTAL		0.00
(FORMERLY: ALLIED CORP)	255.00		BOARD OF RETIREMENT-LOS ANGELES CO EMPL RET SYS		
(MERGED WITH HONEYWELL INTERNATIONAL, INC AND NAME CHANGED TO HONEYWELL INTERNATIONAL, INC)	-255.00		SECOND WEST COAST BASIN JUDGMENT (NOW KNOWN AS LOS ANGELES COUNTY WESTERN AVE GOLF)		
TOTAL		0.00	BRANDSMA, MAYNARD		
ALWAG, HILARIO S AND EMMA			SUCCESSOR IN PART TO ESTATE OF JOHN GRANT	11.80	
SUCCESSOR TO T C NAVARRO	53.90		SOLD TO HILLSIDE MEMORIAL PARK	-11.80	
SUCCESSOR TO PEGGY SWICK	5.50		TOTAL		0.00
SOLD TO TORRANCE UNIFIED SCHOOL DISTRICT	-59.40		BURKE, W F AND LOIS PRICE	9.50	
TOTAL		0.00	SOLD TO H S SCOTT	-9.50	
AMERICAN PLANT GROWERS, INC			TOTAL		0.00
SECOND WEST COAST BASIN JUDGMENT	2.60		CBS INC		
SUCCESSOR TO BEN CLUFF DAIRY	7.40		FORMERLY COLUMBIA BROADCASTING SYS INC	18.50	
SOLD TO SUNRISE GROWERS, INC	-10.00		SOLD TO MORAN, RONALD E	-9.00	
SUCCESSOR TO SUNRISE GROWERS, INC	10.00		TOTAL		9.50
SOLD TO VUKELICH MIKE, JR.	-10.00		CALIFORNIA, STATE OF		
TOTAL		0.00	SUCCESSOR TO ROBERT L FULLILOVE	1.00	
ANDERSON, REMBERT C	80.50		SUCCESSOR TO JOE MONIZ JR	2.20	
SOLD TO SPARKLETTS DRINKING WATER CORP	-80.50		SUCCESSOR IN PART TO KELLY PIPE CO	16.30	
TOTAL		0.00	SUCCESSOR IN PART TO FLAVIO RODRIGUEZ	4.00	
AQUA CAPITAL MANAGEMENT LP			SUCCESSOR IN PART TO A H SMITH (SAM SURBER AND FRED A SMITH)	2.60	
SUCCESSOR TO ECOGAS	11.80		SOLD TO SPARKLETTS DRINKING WATER CORP	-26.10	
SOLD TO HILLSIDE MEMORIAL PARK AND MORTUARY	-11.80		TOTAL		0.00
TOTAL		0.00	CALIFORNIA WATER SERVICE CO	3,071.00	
ASAHI FANCY KOI, INC			SUCCESSOR TO PALOS VERDES WATER CO	999.00	
SUCCESSOR IN PART TO JAKE ENGELSMA	2.00		TOTAL		4,070.00
TOTAL		2.00	CALIFORNIA WATER SERVICE CO (DOMINGUEZ)		
ASSOCIATED SOUTHERN INVESTMENT CO			DOMINGUEZ WATER CO MERGED WITH AND INTO CALIFORNIA WATER SERVICE CO, WATERMASTER ACCOUNT KNOWN AS CALIFORNIA WATER SERVICE CO (DOMINGUEZ)	10,162.45	
(FORMERLY EDISON SECURITIES CO)	46.70		SUCCESSOR IN PART TO HONEYWELL INTERNATIONAL INC	255.00	
SOLD TO SOUTHERN CALIFORNIA EDISON CO	-46.70		TOTAL		10,417.45
TOTAL		0.00	CARSON ESTATE CO	130.00	
ATLANTIC RICHFIELD CO			SOLD TO DOMINGUEZ WATER CORP	-130.00	
(FORMERLY RICHFIELD OIL CO)	4,428.00		TOTAL		0.00
SUCCESSOR TO MANVILLE SALES CORP	881.00		CARSON-HARBOR VILLAGE MOBILE HOME PARK		
SOLD TO TESORO REFINING AND MARKETING COMPANY LLC (6-13-2013)	-5,309.00		SUCCESSOR TO ETICHEMENDY, CAROLINE, ESTATE OF	8.20	
TOTAL		0.00	SOLD TO MONTROSE CHEMICAL CORPORATION OF CALIFORNIA (9-28-2011)	-1.20	
AUTOMATION INDUSTRIES			TOTAL		7.00
SUCCESSOR TO HARRIS TUBE, INC	0.70		CARSON-MADRONA CO		
TOTAL		0.70	SUCCESSOR TO CHANSLOR-WESTERN OIL AND DEVELOP CO	104.00	
BALLMAN, ROSEMARY N	7.00		TOTAL		104.00
SOLD TO UNITED CALIFORNIA BANK	-7.00		CENTURY BUILDERS		
TOTAL		0.00	SUCCESSOR TO UNION NURSERY, INC	4.70	
BANK OF AMERICA NATIONAL TRUST AND SAVINGS ASSOCIATION (TRUST BI-51)	0.10		TOTAL		4.70
RELEASED TO MICHAEL L ROCKWELL	-0.10		CHANDLERS PALOS VERDES SAND AND GRAVEL CORP		
TOTAL		0.00	SECOND WEST COAST BASIN JUDGMENT	95.20	
BARCLAY HOLLANDER CORP			SUCCESSOR TO SOUTHWESTERN PORTLAND CEMENT CO	15.00	
(FORMERLY BARCLAY HOLLANDER CURCI INC)			SUCCESSOR TO TORRANCE SAND AND GRAVEL CORP	184.00	
SUCCESSOR IN PART TO JOUGHIN TORRANCE RANCH	3.33		SOLD TO ROLLING HILLS COUNTRY CLUB	-290.00	
SOLD TO TORRANCE, CITY OF	-3.33		TOTAL		4.20
TOTAL		0.00	CHANSOR-WESTERN OIL AND DEVELOPMENT CO (FORMERLY CHANSOR-CANFIELD MIDWAY OIL CO)	104.00	
BARCLAY HOLLANDER CURCI INC					
(NOW KNOWN AS BARCLAY HOLLANDER CORP)					

West Coast Basin Watermaster

SOLD TO CARSON-MADRONA CO	-104.00		DOUGLAS AIRCRAFT CO, INC		
TOTAL		0.00	(SEE MCDONNELL DOUGLAS CORP)		
CHEMICALS CO OF ALLIED CORP			EARLY, H J AND DAISY	111.00	
(FORMERLY INDUSTRIAL CHEMICAL DIVISION, ALLIED			SOLD TO DOMINGUEZ WATER CORP	-91.00	
CHEMICAL CORP)			SOLD TO SAMUEL R AND RAYMOND S	-20.00	
(NOW KNOWN AS ALLIED CORP)			FUJIMOTO		
CHEVRON USA INC	4,541.70		TOTAL		0.00
(FORMERLY STANDARD OIL CO OF CALIFORNIA)			ECOGAS, INC.		
SUBJECT TO LONG TERM LEASE FROM	59.60		SUCCESSOR TO BLACK, DANA	11.80	
ISABELLA GRANZ PER JUDGEMENT			SOLD TO AQUA CAPITAL MANAGEMENT LP	-11.80	
TOTAL		4,601.30	TOTAL		0.00
CHRISTIE, CLEM, DON C FOHL AND LEON LARSON	0.02		ECO SERVICES OPERATIONS LLC	521.00	
(TRUSTEES OF WILMINGTON CEMETERY ASSOC)			(FORMERLY SOLVAY USA INC.)		
ABANDONED WATER RIGHT	-0.02		TOTAL		521.00
TOTAL		0.00	EDISON SECURITIES CO		
CHURCHILL DOWNS CALIFORNIA CO			(NOW KNOWN AS ASSOCIATED SOUTHERN		
SUCCESSOR TO HOLLYWOOD PARK	282.00		INVESTMENT CO)		
OPERATING CO			EL SEGUNDO, CITY OF	953.00	
SOLD TO HOLLYWOOD PARK LAND COMPANY, LLC	-282.00		TOTAL		953.00
TOTAL		0.00	ENGELSMA, JAKE		
CLUFF, BEN DAIRY			SUCCESSOR TO WILBUR HORNSTRA	14.10	
SUCCESSOR TO EDWARD AND EMILY COST	7.40		SOLD TO ASAH FANCY KOI, INC	-2.00	
SOLD TO AMERICAN PLANT GROWERS, INC	-7.40		TRANSFERRED TO SUSAN ENGELSMA,	-12.10	
TOTAL		0.00	TRUSTEE ET AL		
COAST FOREST PRODUCTS			TOTAL		0.00
SUCCESSOR TO SOUTHWEST STEEL ROLLING	3.40		ENGELSMA, SUSAN; TRUSTEE OF THE SUSAN		
MILLS			ENGELSMA TRUST		
SOLD TO GEORGIA-PACIFIC CORP	-3.40		TRANSFERRED FROM JAKE ENGLESMA	12.10	
TOTAL		0.00	TOTAL		12.10
COASTLINE CHURCH OF CHRIST			EQUILON ENTERPRISES, LLC		
SUCCESSOR TO LERMENS, EVELYN	0.70		SUCCESSOR TO TEXACO REFINING AND	3,432.00	
TOTAL		0.70	MARKETING, INC		
COLLISTER, CAMERON			SOLD TO SHELL OIL PRODUCTS US	-3,432.00	
SUCCESSOR TO JOUGHIN TORRANCE RANCH	136.82		TOTAL		0.00
QUITCLAIMED TO NORMANDIE PARK	-136.82		ETCHEMENDY, CAROLINE, ESTATE OF	8.20	
TOTAL		0.00	SOLD TO CARSON-HARBOR VILLAGE MOBILE	-8.20	
COLUMBIA BROADCASTING SYSTEM, INC			HOME PARK		
(NOW KNOWN AS CBS INC)			TOTAL		0.00
CONOCOPHILLIPS COMPANY			EVERGREEN AMERICA CORP		
SUCCESSOR TO TOSCO CORPORATION			SUCCESSOR TO POTHOS CORP	5.40	
(NOW KNOWN AS PHILLIPS 66 COMPANY)			TOTAL		5.40
COST, EDWARD AND EMILY	7.40		EWING, CARMELITA ROSECRANS	91.30	
SOLD TO BEN CLUFF DAIRY	-7.40		SOLD TO SOUTHERN CALIFORNIA WATER CO	-91.30	
TOTAL		0.00	TOTAL		0.00
CURTIS, OWEN W	3.80		EWING, NED ET AL		
SOLD TO SOUTHERN CALIFORNIA WATER CO	-3.44		SUCCESSOR IN PART TO ISABEL J GRANZ	6.50	
TOTAL		0.36	ESTATE		
DEL AMO ESTATE CO	121.00		SOLD TO R A WATT, INC	-6.50	
SOLD TO DOMINGUEZ WATER CORP	-121.00		TOTAL		0.00
TOTAL		0.00	FLESH, LESLIE R AND ANDOR PASTERNAK, ET AL		
DELANEY, GOLDA, ESTATE OF			SUCCESSORS TO ALFRED D AND RUTH	3.50	
(FORMERLY ARTHUR J DELANEY)			SEABACK		
SUCCESSOR TO BEGO CORP	4.10		SOLD TO STANLEY C LAGERLOF	-3.50	
TOTAL		4.10	TOTAL		0.00
DENNIS, ESTHER M SHEETS			FLETCHER OIL AND REFINING CO		
(FORMERLY ESTHER M SHEETS)	5.50		(FORMERLY FLETCHER OIL CO)	86.30	
SOLD TO TORRANCE, CITY OF	-5.50		SUCCESSOR TO FLETCHER, ROBERT G ET AL	3.70	
TOTAL		0.00	SOLD TO WESTERN WATER CO	-90.00	
DESSER ENTERPRISES, INC.			TOTAL		0.00
SECOND WEST COAST BASIN JUDGMENT	0.00	0.00	FLETCHER, ROBERT G, DANIEL S, AND WILFRED O		
SOLD TO MYRON Z. CHLAVIN AND NETTIE			SUCCESSOR TO FRED A JUNGQUIST	3.70	
DESSER TRUST AND JHD PROPERTIES, LLC	-0.00		SOLD TO FLETCHER OIL AND REFINING CO	-3.70	
TOTAL		0.00	TOTAL		0.00
DOMINGUEZ ESTATE CO	254.00		FUJIMOTO, SAMUEL R		
SOLD TO DOMINGUEZ WATER CORP	-254.00		(FORMERLY KNOWN AS FUJIMOTO, SAMUEL R		
TOTAL		0.00	AND RAYMOND S)		
DOMINGUEZ WATER CORP			SUCCESSOR IN PART TO H J AND DAISY	20.00	
(NOW KNOWN AS DOMINGUEZ WATER CO)			EARLY		
DOMINGUEZ WATER CO	9,477.80		SOLD TO FUJIMOTO, SAMUEL R, STEVEN T	-20.00	
(FORMERLY KNOWN AS DOMINGUEZ WATER CORP)			AND JON T JOINT TENANTS		
SUCCESSOR TO CARSON ESTATE CO	130.00		TOTAL		0.00
SUCCESSOR TO DEL AMO ESTATE CO	121.00		FUJIMOTO, SAMUEL R AND RAYMOND S		
SUCCESSOR TO DOMINGUEZ ESTATE CO	254.00		(SEE FUJIMOTO, SAMUEL R)		
SUCCESSOR TO DON WILSON BUILDERS	32.60		FUJIMOTO, SAMUEL R, STEVEN T AND JON K,		
SUCCESSOR TO HEYDENBECK, JEANETTE R	0.70		JOINT TENANTS		
SUCCESSOR TO NAKANO, KIKUNO, ET AL	19.30		SUCCESSOR TO FUJIMOTO, SAMUEL R	20.00	
SUCCESSOR IN PART TO H J EARLY	91.00		TOTAL		20.00
SUCCESSOR IN PART TO R A WATT, INC	61.85		FULLILOVE, ROBERT L	1.00	
SOLD IN PART TO WATSON LAND CO	-37.60		SOLD TO STATE OF CALIFORNIA	-1.00	
SUCCESSOR TO THORPE, GREGORY	11.80		TOTAL		0.00
DOMINGUEZ WATER CO MERGED WITH AND INTO	-10,162.45		FUTURA INDUSTRIES, INC		
CALIFORNIA WATER SERVICE CO, WATERMASTER			SUCCESSOR TO SPANISH AMERICAN	44.40	
ACCOUNT KNOWN AS CALIFORNIA WATER			INSTITUTE		
SERVICE CO (DOMINGUEZ)			SOLD TO KAUFMAN, LEO AND SHELDON BAER	-44.40	
TOTAL		0.00	TOTAL		0.00
DON WILSON BUILDERS			GARRETT CORP, THE		
SUCCESSORS TO KASUO, ISAMU, AND	32.60		SUCCESSOR TO SHINODA BROTHERS INC	22.50	
YOSHIKI R KITA			TRANSFERRED TO ALLIED-SIGNAL INC	-22.50	
SOLD TO DOMINGUEZ WATER CORP	-32.60		(TORRANCE OFFICE)		
TOTAL		0.00	TOTAL		0.00
			GATX TANK STORAGE TERMINALS CORP		

SUCCESSOR TO PHILLIPS PETROLEUM CO	167.00		(FORMERLY HOLLYWOOD TURF CLUB)		
SOLD TO KINDER MORGAN LIQUIDS	-167.00		(NOW KNOWN AS HOLLYWOOD PARK OPERATING CO)		
TERMINALS, LLC.			HOLLYWOOD PARK LAND COMPANY, LLC		
TOTAL		0.00	SUCCESSOR TO CHURCHILL DOWNS	282.00	
GEORGIA-PACIFIC CORP			CALIFORNIA COMPANY		
SUCCESSOR TO COAST FOREST PRODUCTS	3.40		TOTAL		282.00
SOLD TO INGLEWOOD, CITY OF	-3.40		HOLLYWOOD PARK OPERATING CO		
TOTAL		0.00	(FORMERLY HOLLYWOOD PARK INC)	282.00	
GERAHUE LAND CO			SOLD TO CHURCHILL DOWNS CALIFORNIA CO	-282.00	
SUCCESSOR AND ASSIGNEE FOR A S	11.90		TOTAL		0.00
JOHNSTON DRILL CO			HOLLYWOOD TURF CLUB		
ABANDONED WATER RIGHT	-11.90		(NOW KNOWN AS HOLLYWOOD PARK INC)		
TOTAL		0.00	HONEYWELL INTERNATIONAL INC		
GILLINGHAM, FLORENCE R, ET AL	2.40		MERGED WITH ALLIED-SIGNAL INC (EL	277.50	
TOTAL		2.40	SEGUNDO AND TORRANCE OFFICES) AND		
GOLDEN STATE WATER COMPANY			THE CORP NAME CHANGED TO		
SUCCESSOR TO SOUTHERN CALIFORNIA			HONEYWELL INTERNATIONAL INC		
WATER COMPANY (NAME CHANGE)	7,502.24		SOLD IN PART TO CALIFORNIA WATER	-255.00	
TOTAL		7,502.24	SERVICE CO (DOMINGUEZ)		
GONZALES, FELIPE AND GABRIELA			TOTAL		22.50
(NOW KNOWN AS GONZALES, GABRIELA AND			HONOLD, KRISTIN BRANDSMA		
MARIA R)			SUCCESSOR IN PART TO ESTATE OF JOHN	11.80	11.80
GONZALES, GABRIELA AND MARIA R			GRANT		
(FORMERLY GONZALES, FELIPE AND GABRIELA)	34.30		HORNSTRA, WILBUR	14.10	
SOLD TO TORRANCE, CITY OF	-34.30		SOLD TO JAKE ENGELSMA	-14.10	
TOTAL		0.00	TOTAL		0.00
GRAND LAND CO			HUGHES AIRCRAFT	0.00	0.00
SUCCESSOR IN PART TO SMITH, A H, ET AL	5.70		(SEE 1981 JUDGMENT ORDER)		
ABANDONED WATER RIGHTS 1961-62	-5.70		HUNT, DONALD G		
TOTAL		0.00	SUCCESSOR TO JAMES SCANDA	1.90	
GRANT, JOHN, ESTATE OF	59.00		SOLD TO KENICHI INOSE	-1.90	
APPORTIONED IN PART TO BLACK, DANA	-11.80		TOTAL		0.00
APPORTIONED IN PART TO BRANDSMA,	-11.80		INDUSTRIAL CHEMICAL DIVISION, ALLIED CHEMICAL		
MAYNARD			CORP		
APPORTIONED IN PART TO HONOLD, KRISTIN	-11.80		(FORMERLY ALLIED CHEMICAL CORP, GEN		
BRANDSMA			CHEMICAL CO)		
APPORTIONED IN PART TO THORPE,	-11.80		(NOW KNOWN AS ALLIED CORP)		
GREGORY			INGLEWOOD, CITY OF	4,382.00	
APPORTIONED IN PART TO THORPE,	-11.80		SUCCESSOR TO ABELL, FRANK	1.80	
TERRENCE			SUCCESSOR TO BOISE CASCADE BUILDING	16.92	
TOTAL		0.00	CO		
GRANZ, ISABELA J	380.00		SUCCESSOR TO GEORGIA-PACIFIC CORP	3.40	
PARTITIONED TO HEIRS:			SUCCESSOR TO KAUFMAN, LEO AND	44.40	
ISABELA J GRANZ ESTATE	-33.80		SHELDON BAER		
JOUGHIN TORRANCE RANCH	-212.42		SUCCESSOR IN PART TO GEORGE R	1.37	
GEORGE R MURDOCK	-15.12		MURDOCK		
EMMA J OSBORN	-32.66		TOTAL		4,449.89
SUBJECT TO LONG TERM LEASE TO:	-59.60		INOSE ET AL		
STANDARD OIL CO OF CALIF			(KEN K INOSE, KAY K INOSE, KIYOKO YOSHIYAMA,		
SUPERIOR OIL CO	-26.40		KENICHI INOSE, KAYOKO K INOSE AND		
TOTAL		0.00	DAVID T NAKATANI, TRUSTEE OF THE INOSE CHILDREN		
GRANZ, ISABELA J, ESTATE OF			TRUST U/D/T DATE 11/1/78)		
SUCCESSOR IN PART TO ISABELA J GRANZ	33.80		(FORMERLY INOSE, KENICHI)		
SOLD IN PART TO RICHARD BARCLAY AND R A	-13.55		SUCCESSOR TO HUNT, DONALD G	1.90	
WATT			SUCCESSOR TO THAXTER, RALPH AND LOIS A	3.50	
SOLD IN PART TO NED EWING, ET AL	-6.50		LENOIR		
SOLD IN PART TO R A WATT, INC	-13.75		SOLD TO POTHOS CORP	-5.40	
TOTAL		0.00	TOTAL		0.00
HARRIS, R AND L			INOSE, KENICHI		
SUCCESSOR TO LAWRENCE I LISTON	0.70		(NOW KNOWN AS INOSE ET AL)		
DISCLAIMED WATER RIGHT	-0.70		JENKINS, HARRY C		
TOTAL		0.00	SUCCESSOR TO H L PERRY	1.80	
HARRIS TUBE, INC			SOLD TO ABC NURSERY, INC	-1.80	
SUCCESSOR IN PART TO B ROBINSON AND	0.70		TOTAL		0.00
ASSOCIATES			JOHNS-MANVILLE PRODUCTS CORP		
TRANSFERRED TO AUTOMATION IND INC-	-0.70		(SEE JOHNS-MANVILLE SALES CORP)		
HARRIS TUBE			JOHNS-MANVILLE SALES CORP		
TOTAL		0.00	(FORMERLY: JOHNS-MANVILLE PRODUCTS CORP		
HAWTHORNE, CITY OF	1,882.00		MANVILLE SERVICE CORP)		
TOTAL		1,882.00	(NOW KNOWN AS MANVILLE SALES CORP)		
HENDERSON, BEATRICE M	1.30		TOTAL		0.00
ABANDONED WATER RIGHT	-1.30		JOHNSTON, A S, DRILLING CO	11.90	
TOTAL		0.00	ASSIGNED TO GERAHUE LAND CO	-11.90	
HEYDENBECK, JEANETTE R			TOTAL		0.00
(FORMERLY JEANETTE R REIFSNYDER)	0.70		JONES, ANNA MAE	50.20	
SOLD TO DOMINGUEZ WATER CORP	-0.70		SOLD TO CITY OF TORRANCE	-50.20	
TOTAL		0.00	TOTAL		0.00
HILLSIDE MEMORIAL PARK	16.70		JOUGHIN TORRANCE RANCH		
SUCCESSOR TO SANTA FE LAND	39.50		SUCCESSOR IN PART TO ISABELA J GRANZ	212.42	
IMPROVEMENT CO			SOLD IN PART TO BARCLAY HOLLANDER	-3.33	
SUCCESSOR TO SIGMUND S AND LIONEL S	12.50		CURCI INC		
HOCKWALD			SOLD IN PART TO BOISE CASCADE BUILDING	-16.92	
SUCCESSOR TO THORPE, TERRENCE	11.80		CO		
SUCCESSOR TO BRANDSMA, MAYNARD	11.80		SOLD IN PART TO COLLISTER, CAMERON	-136.82	
SUCCESSOR TO AQUA CAPITAL	11.80		SOLD IN PART TO R A WATT, INC	-55.35	
MANAGEMENT L.P.			TOTAL		0.00
TOTAL		104.10	JUNGQUIST, FRED A		
HOCKWALD, SIGMUND S AND LIONEL S	12.50		(FORMERLY KATHERINE P WOODMAN)	3.70	
SOLD TO HILLSIDE MEMORIAL PARK	-12.50		SOLD TO ROBERT G FLETCHER ET AL	-3.70	
TOTAL		0.00	TOTAL		0.00
HOLLYWOOD PARK INC			KAHLERT, ET AL		

West Coast Basin Watermaster

AND SUCCESSOR IN PART TO KELLY PIPE CO SOLD TO SPARKLETTS DRINKING WATER CORP TOTAL	18.90 -18.90 0.00		LOS ANGELES COUNTY WATERWORKS DISTRICT NO 22 SOLD TO SOUTHERN CALIF WATER CO TOTAL	551.00 -551.00 0.00
KAUFMAN, LEO AND SHELDON BAER SUCCESSOR TO FUTURA INDUSTRIES INC SOLD TO CITY OF INGLEWOOD TOTAL	44.40 -44.40 0.00		LOS ANGELES COUNTY WESTERN AVE GOLF COURSE (FORMERLY BOARD OF RETIREMENT OF THE LOS ANGELES COUNTY EMPLOYEES RETIREMENT SYSTEM) (NOW KNOWN AS LOS ANGELES CHESTER L WASH GOLF)	
KELLY PIPE CO SOLD IN PART TO STATE OF CALIFORNIA SOLD IN PART TO KAHLERT, ET AL SOLD IN PART TO SPARKLETTS DRINKING WATER CORP TOTAL	49.00 -16.30 -18.90 -13.80 0.00		LOYOLA MARYMOUNT UNIVERSITY (FORMERLY LOYOLA UNIVERSITY OF LOS ANGELES) TOTAL	48.10 48.10
KINDER MORGAN LIQUIDS TERMINALS, LLC. SUCCESSOR TO GATX TANK STORAGE TERMINALS CORP. TOTAL	167.00 167.00		MANHATTAN BEACH, CITY OF TOTAL	1,131.20 1,131.20
KITA, ISAMU, KASUO, AND YOSHIKI R SOLD TO DON WILSON BUILDERS TOTAL	32.60 -32.60 0.00		MANVILLE SALES CORP (FORMERLY: JOHNS-MANVILLE SALES CORP JOHNS-MANVILLE PRODUCTS CORP MANVILLE SERVICE) SOLD TO ATLANTIC RICHFIELD CO TOTAL	881.00 -881.00 0.00
KURTZ, GLADYS SOLD TO SPARKLETTS DRINKING WATER CORP TOTAL	3.50 -3.50 0.00		MANVILLE SERVICE CORP (SEE JOHNS-MANVILLE SALES CORP)	
LAGERLOF, STANLEY C SUCCESSOR TO LESLIE R FLESCHE AND ANDOR PASTERNAK, ET AL SOLD TO SHELL OIL CO TOTAL	3.50 -3.50 0.00		MARTIN BROTHERS BOX CO, INC SOLD TO SOUTHWEST STEEL ROLLING MILLS TOTAL	3.40 -3.40 0.00
LAWLER, JAMES K SOLD TO B ROBINSON AND ASSOC TOTAL	3.10 -3.10 0.00		MAYFLOWER NURSERIES (HERBERT SAKAYE FUKUWAI, DBA) TOTAL	0.00 0.00
LERMENS, EVELYN (FORMERLY LERMENS, ALFRED) SOLD TO COASTLINE CHURCH OF CHRIST TOTAL	0.70 -0.70 0.00		MCCANDLESS, JAMES SOLD TO SPARKLETTS DRINKING WATER CORP TOTAL	6.70 -6.70 0.00
LEUZINGER, EMMA L TOTAL	1.40 1.40		MCDONNELL DOUGLAS CORP (FORMERLY DOUGLAS AIRCRAFT, CO INC) LONG TERM LEASE FROM UNITED STATES NAVY DEPARTMENT TOTAL	1.70 1.70
LISTON, LAWRENCE SOLD TO R AND L HARRIS TOTAL	0.70 -0.70 0.00		MOBIL OIL CORP (FORMERLY SOCONY MOBIL OIL CO) SUCCESSOR TO SUPERIOR OIL CO TOTAL	2,570.00 26.40 2,596.40
LITTLE, WILLIAM SUCCESSOR TO ROCKWELL, MICHAEL SOLD TO WATT INDUSTRIAL PROPERTIES TOTAL	0.10 -0.10 0.00		MONETA MUTUAL WATER CO SOLD TO CITY OF TORRANCE TOTAL	916.00 -916.00 0.00
LOCKHEED MARTIN CORPORATION SUCCESSOR TO OCEAN INDUSTRIES TOTAL	0.10 0.10		MONIZ, JOE JR SOLD TO STATE OF CALIFORNIA TOTAL	2.20 -2.20 0.00
LOMITA, CITY OF WATER SYSTEM (WWD 13) (FORMERLY LOS ANGELES COUNTY WATERWORKS DISTRICT NO 13) TOTAL	1,352.00 1,352.00		MONTROSE CHEMICAL CORPORATION OF CALIFORNIA SUCCESSOR TO CARSON-HARBOR VILLAGE MOBILE HOME PARK (9-28-2011) TOTAL	1.20 1.20
LONG BEACH, CITY OF TOTAL	0.70 0.70		MORAN, RONALD E SUCCESSOR IN PART TO COLUMBIA BROADCASTING SYSTEM, INC SOLD TO CITY OF TORRANCE TOTAL	9.00 -9.00 0.00
LOPES, FRANK TOTAL	3.70 3.70		MORI, ROY H AND KENJI SECOND WEST COAST BASIN JUDGMENT SOLD TO NOZAKI, SUMIKICHI TOTAL	5.60 -2.00 3.60
LOS ANGELES, CITY OF TOTAL	1,503.00 1,503.00		MURDOCK, GEORGE R SUCCESSOR IN PART TO ISABELA J GRANZ SOLD IN PART TO R BARCLAY AND R A WATT SOLD IN PART TO CITY OF INGLEWOOD TOTAL	15.12 -13.75 -1.37 0.00
LOS ANGELES COUNTY-ALONDRA PARK SUCCESSOR TO LOS ANGELES COUNTY FLOOD CONTROL DIST MERGED WITH LOS ANGELES COUNTY CHESTER L WASHINGTON GOLF COURSE UNDER NEW NAME "LOS ANGELES COUNTY RECREATION FACILITIES" TOTAL	28.70 39.00 -67.70 0.00		MYRON Z. CHLAVIN AND NETTIE DESSER TRUST AND JHD PROPERTIES, LLC SUCCESSOR TO DESSER ENTERPRISES, INC. TOTAL	0.00 0.00
LOS ANGELES COUNTY CHESTER L WASHINGTON GOLF COURSE (FORMERLY LOS ANGELES COUNTY WESTERN AVENUE GOLF COURSE) MERGED WITH LOS ANGELES COUNTY ALONDRA PARK UNDER NEW NAME "LOS ANGELES COUNTY RECREATION FACILITIES" TOTAL	296.00 -296.00 0.00		NAKANO, KIKUNO, ET AL SOLD TO DOMINGUEZ WATER CORP TOTAL	19.30 -19.30 0.00
LOS ANGELES COUNTY FLOOD CONTROL DISTRICT SUCCESSOR IN PART TO A H SMITH, ET AL SOLD TO LOS ANGELES COUNTY - ALONDRA PARK TOTAL	37.60 1.40 -39.00 0.00		NAVARRO, T C SOLD TO HILARIO S AND EMMA ALWAG TOTAL	53.90 -53.90 0.00
LOS ANGELES COUNTY RECREATION FACILITIES MERGER OF LOS ANGELES COUNTY ALONDRA PARK, AND LOS ANGELES COUNTY CHESTER L. WASHINGTON GOLF COURSE TOTAL	67.70 296.00 363.70		NORAIR, A DIVISION OF NORTHROP CORP (FORMERLY KNOWN AS NORTHROP AIRCRAFT, INC) (NOW KNOWN AS NORTHROP CORP)	136.82 -136.82 0.00
LOS ANGELES COUNTY SANITATION DIST NO 2 TOTAL	102.00 102.00		NORMANDIE PARK SUCCESSOR TO COLLISTER, CAMERON SOLD TO CITY OF TORRANCE TOTAL	38.15 38.15
LOS ANGELES COUNTY WATERWORKS DISTRICT NO 13 (NOW KNOWN AS LOMITA, CITY OF WATER SYSTEM WWD 13)			NORTHROP CORP (FORMERLY KNOWN AS NORAIR, A DIV OF NORTHROP CORP) TOTAL	38.15 38.15
			NOZAKI, SUMIKICHI SUCCESSOR IN PART TO MORI, ROY H AND KENJI SUCCESSOR IN PART TO UNITED CALIFORNIA	2.00 5.00

BANK			ABANDONED WATER RIGHT	-0.70	
TOTAL	7.00		TOTAL		0.00
OCEAN INDUSTRIES			RYAN AERONAUTICAL CO	20.20	
SUCCESSOR TO WATT INDUSTRIAL PROPERTIES	0.10		SOLD TO SOUTHERN CALIFORNIA WATER CO	-20.20	
(NAME CHANGE)			TOTAL		0.00
SOLD TO LOCKHEED MARTIN CORPORATION	-0.10		SANTA FE LAND IMPROVEMENT CO	39.50	
TOTAL	0.00		SOLD TO HILLSIDE MEMORIAL PARK	-39.50	
OSBORN, EMMA J			TOTAL		0.00
SUCCESSOR IN PART TO ISABELA J GRANZ	32.66		SCANDA, JAMES AND GEORGE NASSIN	1.90	
SOLD TO R BARCLAY AND R A WATT	-32.66		SOLD TO DONALD G HUNT	-1.90	
TOTAL	0.00		TOTAL		0.00
OTANI, CHISATO	0.00		SCHLAEGEL, KEITH W AND OPAL B	13.60	
TOTAL	0.00		SOLD TO SIDNEY R AND CHARLOTTE W TITLE	-13.60	
PACIFIC CREST CEMETERY CO	17.70		TOTAL		0.00
SUCCESSOR TO H S SCOTT	9.50		SCOTT, H S		
SUCCESSOR TO WADA, KAORU AND SATORU	12.20	39.40	SUCCESSOR TO W F BURKE AND LOIS PRICE	9.50	
TOTAL			QUITCLAIMED TO PACIFIC CREST CEMETERY CO	-9.50	
PALOS VERDES BEGONIA FARM			TOTAL		0.00
SUCCESSOR TO GUS A BAUMAN	0.00		SEABACK, ALFRED D AND RUTH	3.50	
TOTAL	0.00		SOLD TO LESLIE R FLESH AND OR	-3.50	
PALOS VERDES WATER CO	999.00		PASTERNAK, ET AL		
SOLD TO CALIFORNIA WATER SERVICE CO	-999.00		TOTAL		0.00
TOTAL	0.00		SEPULVEDA, LOUIS M	0.70	
PARK WATER CO	160.00		ACQUIRED BY RUFFNER CORP	-0.70	
SOLD TO SOUTHERN CALIFORNIA WATER	-160.00		TOTAL		0.00
TOTAL	0.00		SHEETS, ESTHER M		
PARKE, ZORAIDA	1.80		(FORMERLY CLYDE L SHEETS)		
SOLD TO H L PERRY	-1.80		(SEE DENNIS, ESTHER M SHEETS)		
TOTAL	0.00		SHELL OIL CO	4,516.00	
PASCHKE, WILLIAM JOSEPH	0.02		SUCCESSOR TO LAGERLOF, STANLEY C	3.50	
ABANDONED WATER RIGHT	-0.02		SOLD IN PART TO UNION OIL CO OF CAL	-1,974.00	
TOTAL	0.00		SOLD IN PART TO UNION OIL CO OF CAL	-1,526.00	
PERRY, H L			TOTAL		1,019.50
SUCCESSOR TO ZORAIDA PARKE	1.80		SHELL OIL PRODUCTS US		
SOLD TO HARRY C JENKINS	-1.80		SUCCESSOR TO EQUILON ENTERPRISES, LLC	3,432.00	
TOTAL	0.00		SOLD TO TESORO REFINING AND MARKETING	-3,432.00	
PHILLIPS 66 COMPANY			COMPANY		
(FORMERLY CONOCOPHILLIPS COMPANY)	6,170.00	6,170.00	TOTAL		0.00
TOTAL			SHINODA BROTHERS, INC		
PHILLIPS PETROLEUM CO			SECOND WEST COAST BASIN JUDGMENT	22.50	
(FORMERLY TIDEWATER OIL CO)	167.00		SOLD TO GARRETT CORP, THE	-22.50	
SOLD TO GATX TANK STORAGE TERM CORP	-167.00		TOTAL		0.00
TOTAL	0.00		SMITH, A H.(SAM SURBER AND FRED A SMITH)	9.70	
POTHOS CORP			SOLD IN PART TO STATE OF CALIFORNIA	-2.60	
SUCCESSOR TO INOSE ET AL	5.40		SOLD IN PART TO GRAND LAND CO	-5.70	
SOLD TO EVERGREEN AMERICA CORP	-5.40		SOLD IN PART TO L A CO FLOOD CONTROL DISTRICT	-1.40	
TOTAL	0.00		TOTAL		0.00
REHOR, JOSEPHINE P	2.20		SOCONY MOBIL OIL CO		
TOTAL	2.20		(SEE MOBIL OIL CO)		
REIFSNYDER, JEANETTE R			SOLVAY USA INC.		
(NOW KNOWN AS JEANNETTE R HEYDENBECK)			(NOW KNOWN AS ECO SERVICES OPERATIONS LLC)	0.00	
RHODIA, INC			SOUTHERN CALIFORNIA EDISON CO	10.40	
(NOW KNOWN AS SOLVAY USA INC.)			SUCCESSOR TO ASSOCIATED SOUTHERN	46.70	
SUCCESSOR TO RHONE-POULENC INC			INVESTMENT CO		
RHONE-POULENE BASIC CHEMICALS CO			TOTAL		57.10
SUCCESSOR TO STAUFFER CHEMICAL CO	521.00		SOUTHERN CALIFORNIA WATER CO	6,265.30	
SOLD TO RHONE-POULENE INC	-521.00		SUCCESSOR TO EWING, CARMELITA	91.30	
TOTAL	0.00		ROSECRANS		
RHONE-POULENC INC			SUCCESSOR TO LOS ANGELES COUNTY	551.00	
SUCCESSOR TO RHONE-POULENC, BASIC	521.00		WATERWORKS DIST NO 22		
CHEMICALS CO			SUCCESSOR TO PARK WATER CO	160.00	
SOLD TO RHODIA, INC	-521.00		SUCCESSOR TO RYAN AERONAUTICAL CO	20.20	
TOTAL	0.00		SUCCESSOR TO SOUTHERN PACIFIC CO	166.00	
RICHFIELD OIL CORP			SUCCESSOR IN PART TO OWEN W CURTIS	3.44	
(NOW KNOWN AS ATLANTIC RICHFIELD CO)			SUCCESSOR IN PART TO B ROBINSON AND	2.40	
ROBINSON, B, AND ASSOCIATES			ASSOCIATES		
SUCCESSOR TO JAMES K LAWLER	3.10		SUCCESSOR TO WESTERN WATER SERVICE	242.60	
SOLD IN PART TO HARRIS TUBE, INC	-0.70		COMPANY		
SOLD IN PART TO SOUTHERN CALIFORNIA	-2.40		NAME CHANGE TO GOLDEN STATE WATER	-7,502.24	
WATER CO			COMPANY		
TOTAL	0.00		TOTAL		0.00
ROCKWELL, MICHAEL L			SOUTHERN PACIFIC CO	166.00	
SUCCESSOR TO BANK OF AMERICA NATIONAL	0.10		SOLD TO SO CALIFORNIA WATER CO	-166.00	
TRUST AND SAVINGS ASSOCIATION			TOTAL		0.00
(TRUST B 1-51)			SOUTHERN WESTERN PORTLAND CEMENT COMPANY	15.00	
SOLD TO LITTLE, WILLIAM	-0.10		SOLD TO CHANDLERS PALOS VERDES AND	-15.00	
TOTAL	0.00		GRAVEL CORP		
RODRIGUEZ, FLAVIO	6.10		TOTAL		0.00
SOLD TO STATE OF CALIFORNIA	-4.00		SOUTHWEST STEEL ROLLING MILLS		
DISCLAIMED WATER RIGHT	-2.10		SUCCESSOR TO MARTIN BROTHERS BOX CO,	3.40	
TOTAL	0.00		INC		
ROMAN CATHOLIC ARCHBISHOP OF LOS ANGELES (HOLY	72.30		SOLD TO COAST FOREST PRODUCTS	-3.40	
CROSS CEMETERY)			TOTAL		0.00
TOTAL	72.30		SPANISH AMERICAN INSTITUTE	44.40	
ROLLING HILLS COUNTRY CLUB			SOLD TO FUTURA INDUSTRIES, INC	-44.40	
SUCCESSOR TO CHANDLERS PALOS VERDES	290.00	290.00	TOTAL		0.00
SAND AND GRAVEL CORP.			SPARKLETTS DRINKING WATER CORP		
TOTAL	290.00		SUCCESSOR TO ANDERSON, REMBERT C, ET AL	80.50	
RUFFNER CORP			SUCCESSOR TO CALIFORNIA, STATE OF	26.10	
SUCCESSOR TO LOUIS M SEPULVEDA	0.70		SUCCESSOR TO KAHLERT, ET AL	18.90	
			SUCCESSOR TO KURTZ, GLADYS	3.50	

West Coast Basin Watermaster

SUCCESSOR TO MCCANDLESS, JAMES	6.70		SUCCESSOR TO UNION OIL CO OF CALIF	6,170.00	
SUCCESSOR TO WECHSLER, B A	3.10		MERGED INTO CONOCOPHILLIS COMPANY	6,170.00	
SUCCESSOR IN PART TO KELLY PIPE CO	13.80		TOTAL		0.00
SOLD TO WESTERN WATER CO	-152.60		TUNE, MATES, ET AL		
TOTAL		0.00	SUCCESSOR TO JOSEPHINE WATKINSON	3.10	
STANDARD OIL CO OF CALIFORNIA			SOLD TO B A WECHSLER	-3.10	
(NOW KNOWN AS CHEVRON U S A, INC)			TOTAL		0.00
STAUFFER CHEMICAL CO	521.00		UNION NURSERY, INC		
SOLD TO RHONE-POULENC BASIC CHEMICALS	-521.00		SECOND WEST COAST BASIN JUDGMENT	4.70	
CO			SOLD TO CENTURY BUILDERS	-4.70	
TOTAL		0.00	TOTAL		0.00
SUNRISE GROWERS, INC			UNION OIL CO OF CALIFORNIA	2,670.00	
SUCCESSOR TO AMERICAN PLANT GROWERS	10.00		SUCCESSOR IN PART TO SHELL OIL CO	1,974.00	
INC			SUCCESSOR IN PART TO SHELL OIL CO	1,526.00	
SOLD TO AMERICAN PLANT GROWERS, INC	-10.00		SOLD TO TOSCO CORP	-6,170.00	
TOTAL		0.00	TOTAL		0.00
SUPERIOR OIL CO			UNITED CALIFORNIA BANK		
SUBJECT TO LONG TERM LEASE FROM	26.40		SUCCESSOR TO BALLMAN, ROSEMARY N	7.00	
ISABELA J GRANZ			SOLD TO A B C NURSERY, INC	-2.00	
SOLD TO MOBIL OIL CORP	-26.40		SOLD TO NOZAKI, SUMIKICHI	-5.00	
TOTAL		0.00	TOTAL		0.00
SWICK, PEGGY	5.50		UNITED STATES NAVY DEPARTMENT	1.70	
SOLD TO HILARIO AND EMMA ALWAG	-5.50		LONG TERM LEASE TO MCDONNELL DOUGLAS	-1.70	
TOTAL		0.00	CORP PER JUDGEMENT		
TESORO REFINING AND MARKETING COMPANY			TOTAL		0.00
SUCCESSOR TO SHELL OIL PRODUCTS US			UNITED STATES STEEL CORP	1,791.00	
(NOW KNOWN AS TESORO REFINING &			SOLD TO TORRANCE, CITY OF	-1,791.00	
MARKETING COMPANY LLC)			TOTAL		0.00
TESORO REFINING & MARKETING COMPANY LLC			VERBURG, WILLIAM AND CLARA B	6.70	
(FORMERLY TESORO REFINING AND	3,432.00		SOLD TO ABC NURSERY, INC	-6.70	
MARKETING COMPANY)			TOTAL		0.00
SUCCESSOR TO ATLANTIC RICHFIELD	5,309.00		VUKELICH MIKE, JR.		
COMPANY (6-13-2013)			SUCCESSOR TO AMERICAN PLANT	10.00	
TOTAL		8,741.00	GROWERS, INC.		
TEXACO, INC			TOTAL		10.00
(NOW KNOWN AS TEXACO REFINING AND MARKETING,			WADA, KAORU AND SATORU	12.20	
INC)			SOLD TO PACIFIC CREST CEMETERY CO	-12.20	
TEXACO REFINING AND MARKETING, INC	3,432.00		TOTAL		0.00
(FORMERLY: TEXACO, INC)			WATKINSON, JOSEPHINE	3.10	
SOLD TO EQUILON ENTERPRISES, LLC	-3,432.00		SOLD TO MATES TUNE, ET AL	-3.10	
TOTAL		0.00	TOTAL		0.00
THAXTER, RALPH AND LOIS A LENOIR	3.50		WATSON LAND CO	42.60	
SOLD TO KENICHI INOSE	-3.50		SUCCESSOR IN PART TO DOMINGUEZ WATER	37.60	
TOTAL		0.00	CORP		
THORPE, GREGORY			TOTAL		80.20
SUCCESSOR IN PART TO ESTATE OF JOHN	11.80		WATT INDUSTRIAL PROPERTIES		
GRANT			SUCCESSOR TO WILLIAM LITTLE	0.10	
SOLD TO DOMINGUEZ WATER CORP	-11.80		NAME CHANGE TO OCEAN INDUSTRIES	-0.10	
TOTAL		0.00	TOTAL		0.00
THORPE, TERENCE			WATT, R A, INC		
SUCCESSOR IN PART TO ESTATE OF JOHN	11.80		SUCCESSOR TO NED EWING, ET AL	6.50	
GRANT			SUCCESSOR IN PART TO ISABELA J GRANZ	13.75	
SOLD TO HILLSIDE MEMORIAL PARK	-11.80		ESTATE		
TOTAL		0.00	SUCCESSOR IN PART TO JOUGHIN TORRANCE	55.35	
TIDEWATER OIL CO			RANCH		
(SEE PHILLIPS PETROLEUM CO)			SOLD TO DOMINGUEZ WATER CORP	-61.85	
TITLE, SIDNEY R AND CHARLOTTE W			SOLD TO CITY OF TORRANCE	-13.75	
SUCCESSOR TO KEITH W AND OPAL B	13.60		TOTAL		0.00
SCHLAEGE L			WECHSLER, B A		
SOLD TO ABC NURSERY, INC	-13.60		SUCCESSOR TO MATES TUNE, ET AL	3.10	
TOTAL		0.00	SOLD TO SPARKLETTS DRINKING WATER	-3.10	
TORRANCE, CITY OF	2,519.00		CORP		
SUCCESSOR TO BARCLAY HOLLANDER CORP	3.33		TOTAL		0.00
SUCCESSOR TO BARCLAY, RICHARD AND			WESTERN WATER CO		
WATT, R A	59.96		SUCCESSOR TO FLETCHER OIL AND REFINING CO	90.00	
SUCCESSOR TO BELVIDERE MUTUAL WATER	33.40		SUCCESSOR TO SPARKLETTS DRINKING	152.60	
CO			WATER CORP		
SUCCESSOR TO DENNIS, ESTHER M SHEETS	5.50		SOLD TO WESTERN WATER SERVICES CO	-242.60	
SUCCESSOR TO ALCAST FOUNDRY ET AL	7.20		TOTAL		0.00
SUCCESSOR TO GONZALES, GABRIELA AND	34.30		WESTERN WATER SERVICES CO *		
MARIA R			SUCCESSOR TO WESTERN WATER CO.	242.60	
SUCCESSOR TO JONES, ANNA MAE	50.20		SOLD TO SOUTHERN CALIFORNIA WATER	-242.60	0.00
SUCCESSOR TO MONETA WATER CO	916.00		COMPANY		
SUCCESSOR TO MORAN, RONALD E	9.00		WESTON INVESTMENT CO	184.00	
SUCCESSOR TO NORMANDIE PARK	136.82		SOLD TO TORRANCE SAND AND GRAVEL	-184.00	
SUCCESSOR TO TORRANCE UNIFIED SCHOOL	59.40		CORP		
DISTRICT			TOTAL		0.00
SUCCESSOR TO UNITED STATES STEEL CORP	1,791.00		WISEBURN SCHOOL DISTRICT	8.20	
SUCCESSOR TO WATT, R A, INC	13.75		TOTAL		8.20
TOTAL		5,638.86	WOODMAN, KATHERINE P		
TORRANCE SAND AND GRAVEL CORP			(SEE FRED A JUNGQUIST)		
SUCCESSOR TO WESTON INVESTMENT CO	184.00		ZEIGLER, MAXWELL T	0.00	
SOLD TO CHANDLERS PALOS VERDES	-184.00		TOTAL		0.00
SAND AND GRAVEL CORP			GRAND TOTAL	64,468.25	64,468.25
TOTAL		0.00			
TORRANCE UNIFIED SCHOOL DISTRICT					
SUCCESSOR TO HILARIO S AND EMMA ALWAG	59.40				
SOLD TO CITY OF TORRANCE	-59.40				
TOTAL		0.00			
TOSCO CORP					

* WESTERN WTR. SERV.CO. - PARTY WITH ZERO AR FOR THE DURATION OF LONG-TERM LEASE AGREEMENT WITH CHEVRON (ENDED JUNE 30, 2013)

Appendix C

Parties to the Amended Judgment and Water Rights Holders

as of

June 2022

ABC Nursery, Inc

Aqua Capital Management LP

Asahi Fancy Koi, Inc.

Atlantic Richfield Company

Automation Industries, Inc.

CBS, Inc.

California Water Service Company (Hermosa Redondo)

California Water Service Company (Dominguez)

California Water Service Company (Hawthorne Lease)

Carson-Harbor Village Mobile Home Park

Carson-Madrona Company

Century Builders

Chandler's Palos Verdes Sand & Gravel Company

Chevron USA, Inc

Coastline Church of Christ

Curtis, Owen W.

Delaney, Golda, Estate of

El Segundo, City of

Engelsma, Susan Trust

Evergreen America Corp.

Fujimoto, S.R., S.T. & J.K.

Gillingham, Florence R., et al.

Golden State Water Company

Hawthorne, City of

Hillside Memorial Park

Hollywood Park Land Company, LLC

Honeywell International, Inc.

Honold, Kristin Brandsma

Hughes Aircraft Company

International Plant Growers Inc.

Inglewood, City of

Inglewood Park Cemetery

Kinder Morgan Liquids Terminals, LLC

Leuzinger, Emma L. Estate of

Lockheed Martin Corporation

Lomita, City of Water System

Long Beach, City of

Lopes, Frank

Los Angeles, City of

Los Angeles County Parks & Recreation

Los Angeles County Sanitation District 2

Loyola Marymount University

Manhattan Beach, City of

Mayflower Nurseries

McDonnell Douglas Corporation

Torrance Refining Co.

Montrose Chemical Corporation

Mori, Roy H. and Kenji

Myron Z. Chlavin & Nettie Desser Trust & JHD Pr.

Northrop Corporation

Nozaki, Sumikichi

Ocean Industries

Pacific Crest Cemetery Company

Palos Verdes Begonia Farm

Phillips 66 Company

Rehor, Josephine P.

Eco Services Operation, LLC

Rolling Hills Country Club

Rolling Hills Vista

Roman Catholic Archbishop of Los Angeles

Shell Oil Company

Southern California Edison Company

Tesoro Refining and Marketing Company

Torrance, City of

Vukelich, Mike Jr.

Water Replenishment District

Watson Land Company

West Basin Municipal Water District

Western Water Service Company

Wiseburn School District

Zeigler, Maxwell T.

Water Rights Holders are in **bold**.

Appendix D

Erratum of West Coast Basin Watermaster Annual Report
for July 1, 2020- June 30, 2021

Report Page No.	Original Text [Error Type]	Correction
15	Table 1- Pacific Crest Cemetery Total Pumping 2020-2021: 46.26 [Pumper Correction]	Table 1- Pacific Crest Cemetery Total Pumping 2020-2021: 39.02
22	Replenishment Operations- Administrative Year 2020-2021: 68,979 [Total did not include water from the ARC facility]	Replenishment Operations- Administrative Year 2020-2021: 79,831
37	Appendix A- Pacific Crest Cemetery Groundwater Extraction for June 2021: 13.09 AF Total Extraction: 46.26 [Pumper Correction]	Appendix A- Pacific Crest Cemetery Groundwater Extraction for June 2021: 5.85 AF Total Extraction: 39.02
23	Table 17- Imported Water Use Administrative Year 2020-2021 Torrance, City of: 4,369 Total Imported Water: 127,098 [Data Error]	Table 17- Imported Water Use Administrative Year 2020-2021 Torrance, City of: 14,341 Total Imported Water: 137,070